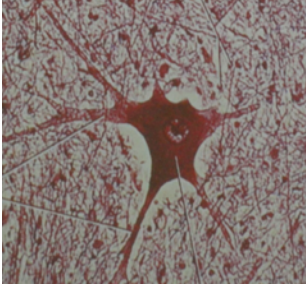
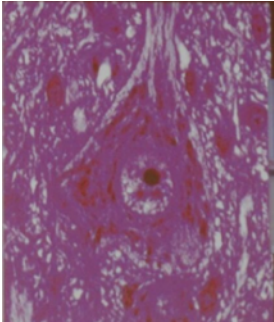
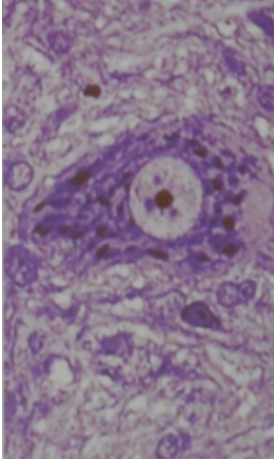
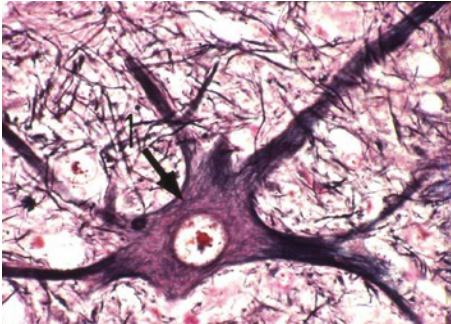
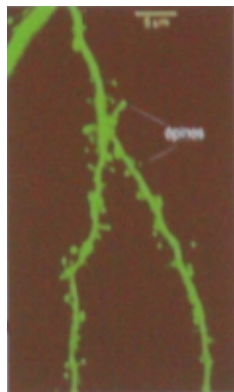
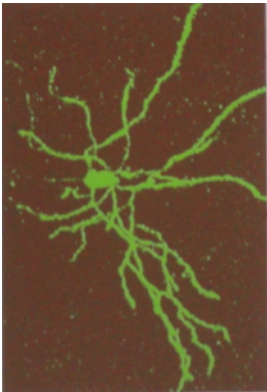


Coupes histologiques

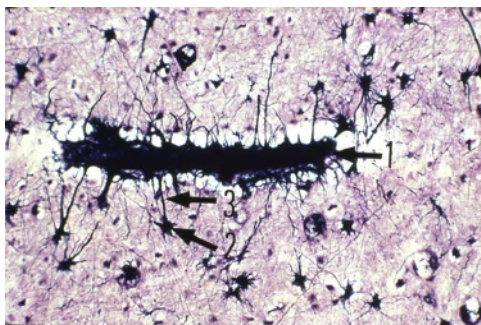
<u>Photo</u>	<u>Légende</u>
	Neurone
	Neurone
	Neurone
	Neurone <i>1 : Neurofibrilles</i>



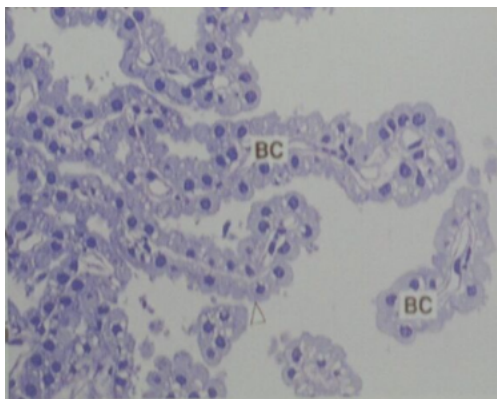
Neurones atteints de la maladie d'Alzheimer



Dendrites
Zoom sur les épines dendritiques terminales



Astrocytes et capillaire sanguin
1 : Capillaire sanguin
2 : Astrocyte
3 : Pied vasculaire de l'astrocyte en 2



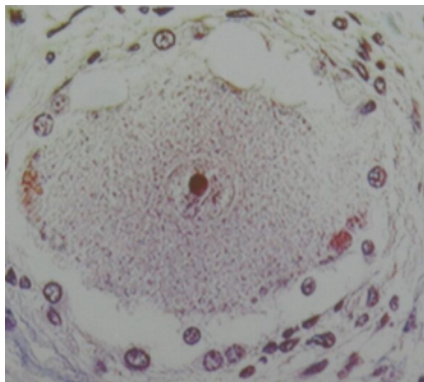
Cellules épendymaires



Cellule de Schwann
1 : Cylindraxes (HP)
2 : Noyau
3 : Gaine de Henle (HP)



Fibre nerveuse amyélinique et myélinique
1 : Cylindraxe (HP)
2 : Gaine de myéline
3 : Noyau de la cellule de Schwann
4 : Fibre nerveuse amyélinique



Oligodendrocyte