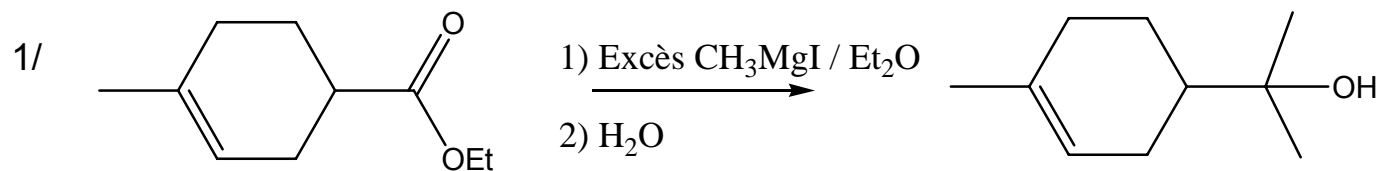
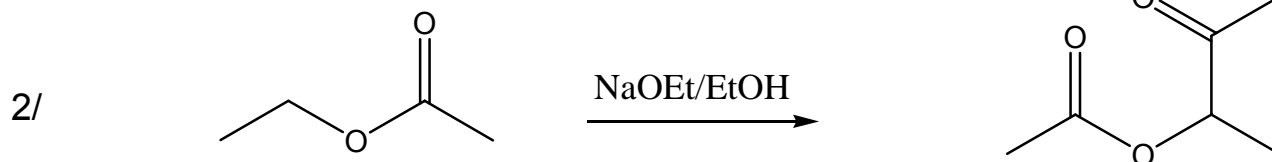


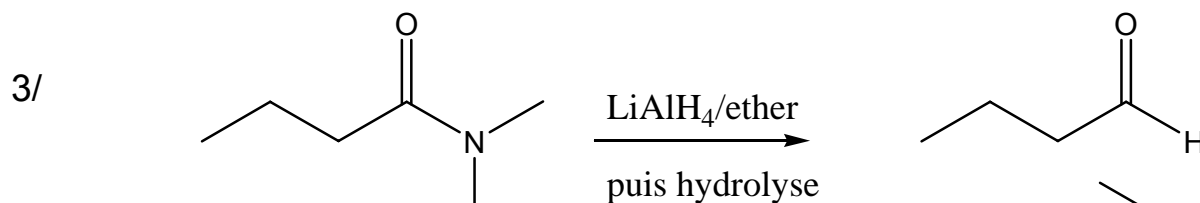
**Exercice 1 : Parmi les réactions suivantes, lesquelles sont exactes ?**



Réponse :



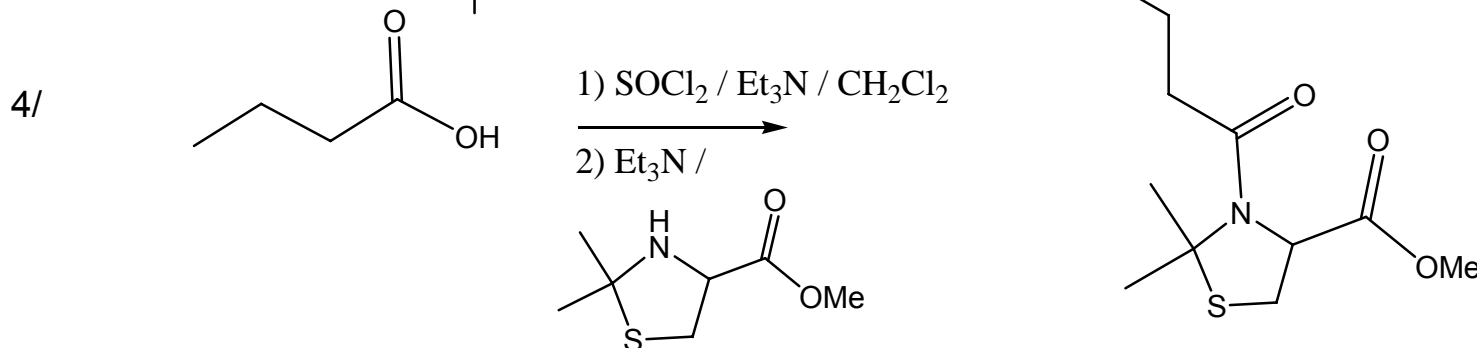
A) Aucune



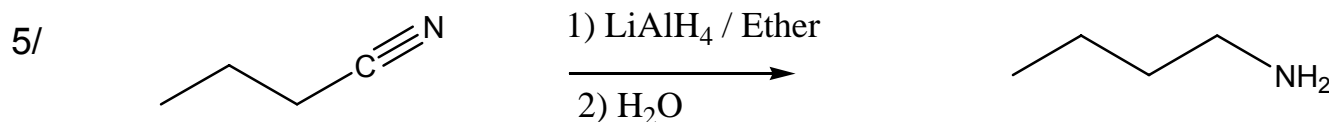
B) 1, 3, 4

C) 2, 4, 5

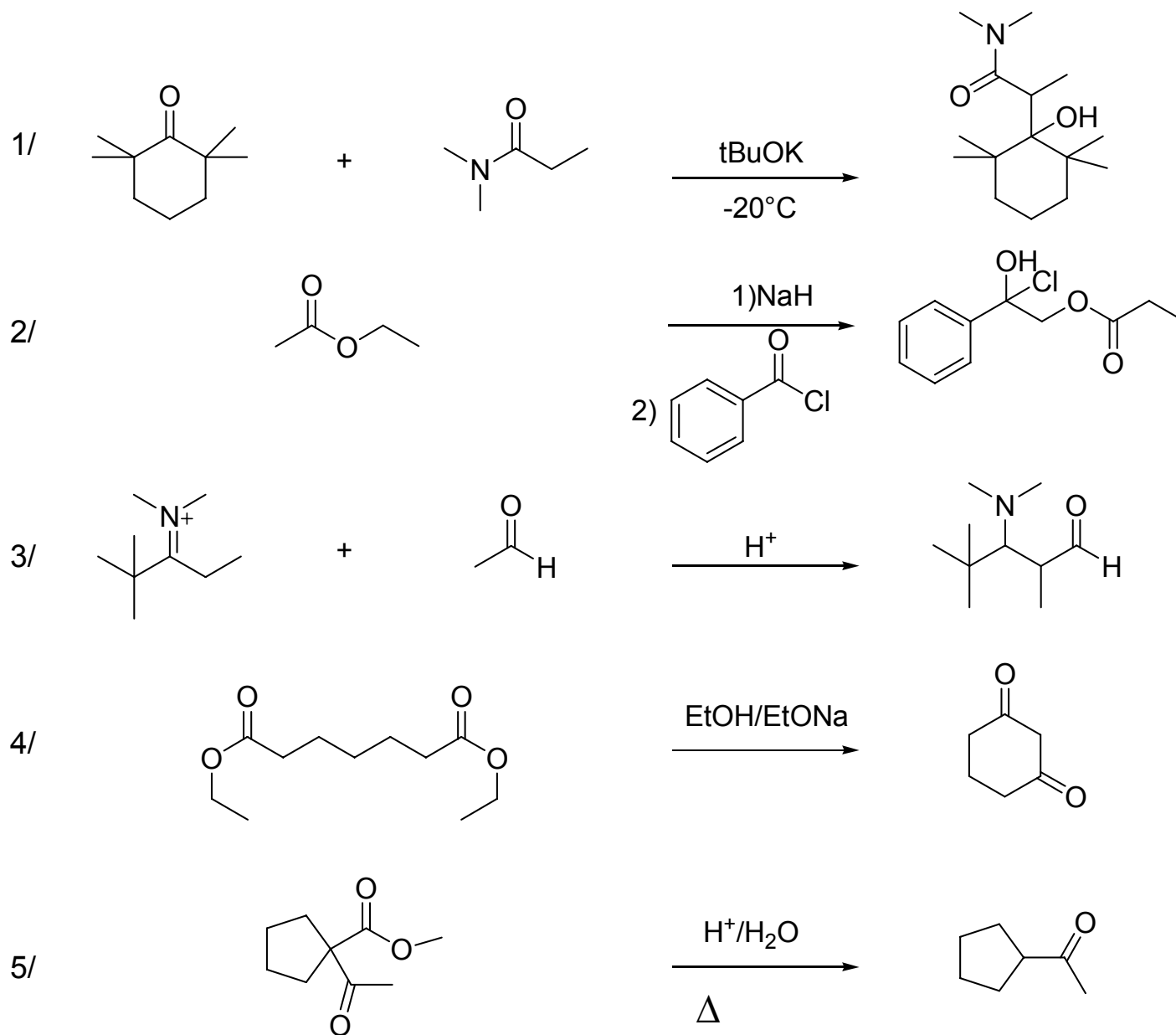
D) 1, 4



E) 1, 4, 5



**Exercice 2 :** Indiquer parmi les réponses suivantes lesquelles sont correctes ?



Réponses

A)1, 2, 3

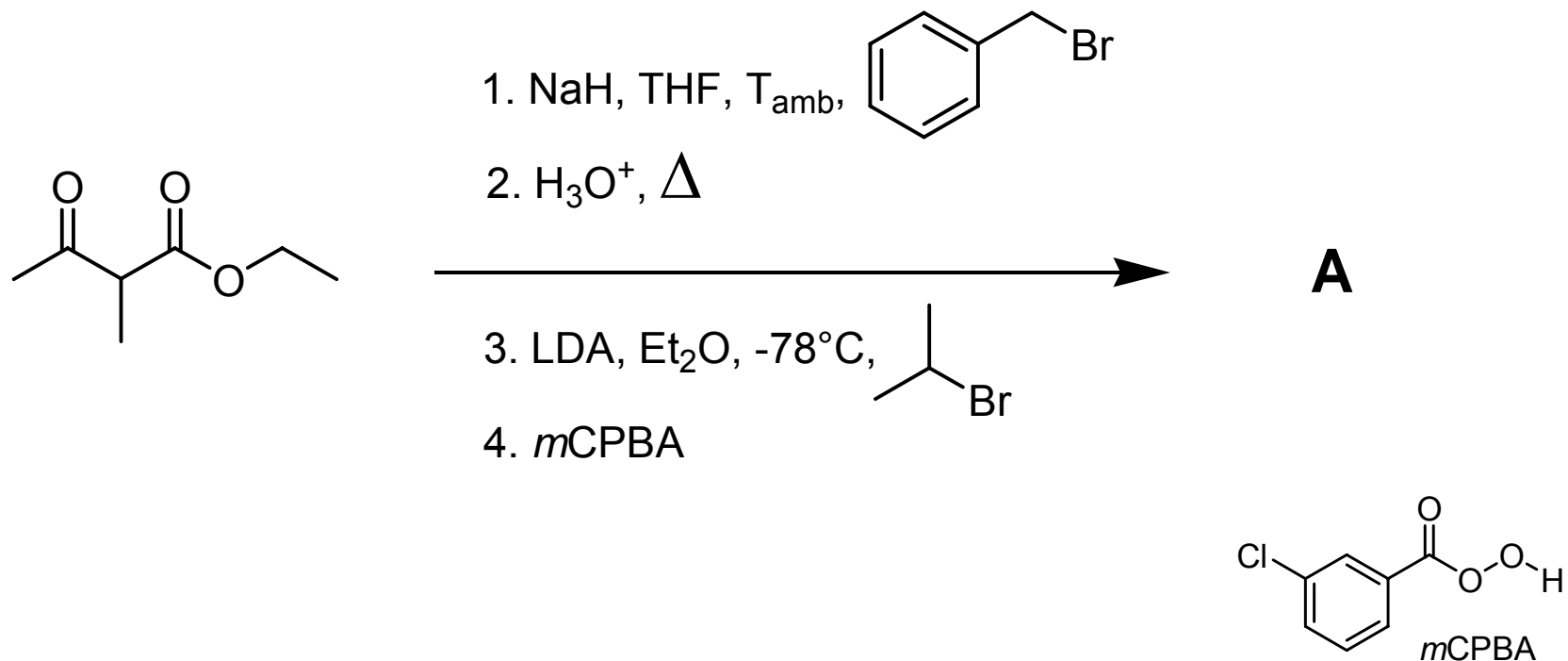
B)2, 5

C)1, 5

D)3, 4

E)1, 4, 5

**Exercice 3** : Soit la séquence réactionnelle suivante :

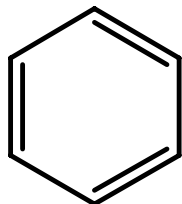


Parmi ces propositions, indiquer le produit final :

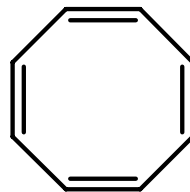
- 1) 2,5-diméthyl-1-phénylhexan-3-one
- 2) 2-méthyl-3-phénylpropanoate de 2-méthylpropyle
- 3) acétate de 2,3-diméthyl-1-phénylbutan-2-yle
- 4) 3-méthylbutanoate de 1-phénylpropan-2-yle
- 5) 1-phénylpropan-2-ol

**Exercice 4 : Lesquels de ces composés sont aromatiques?**

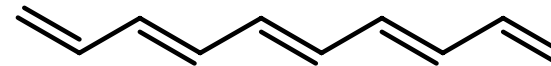
1)



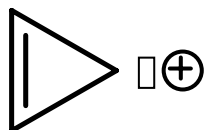
2)



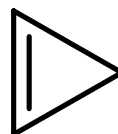
3)



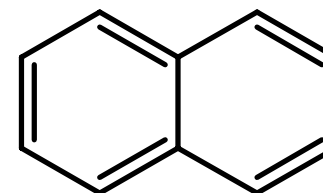
4)



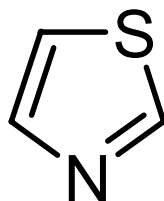
5)



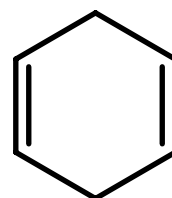
6)



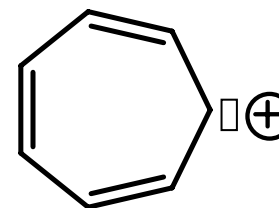
7)



8)



9)



**A) 1; 4; 6; 7; 9**

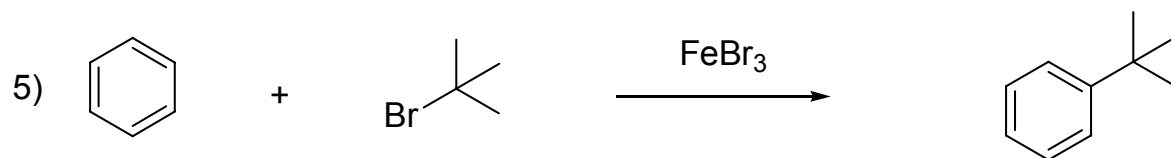
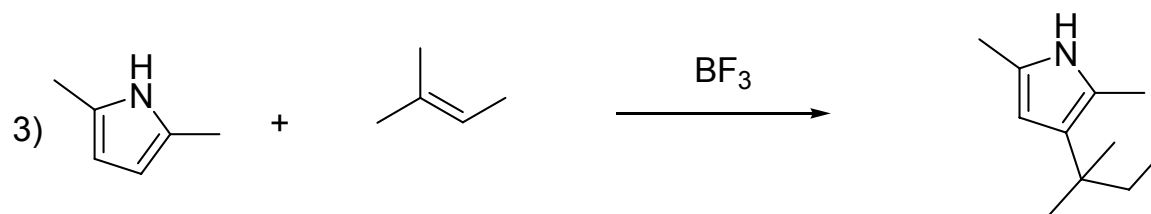
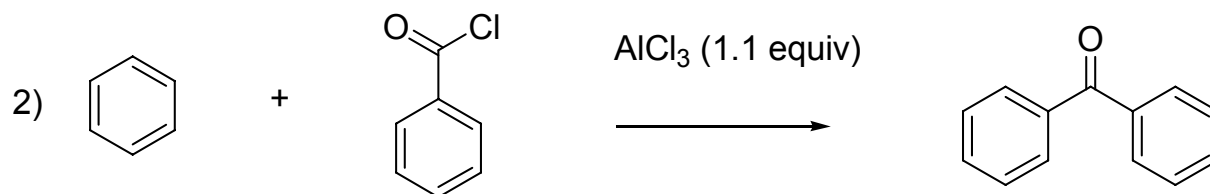
**B) 1; 4; 5; 7; 9**

**C) 2; 3; 4; 5; 7; 9**

**D) 2; 3; 4; 5; 6; 7; 9**

**E) 1; 2; 3; 6; 7; 8**

**Exercice 5** : Indiquer parmi les réponses suivantes lesquelles sont correctes ?



Réponses

A)1, 2, 3

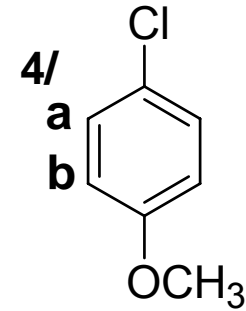
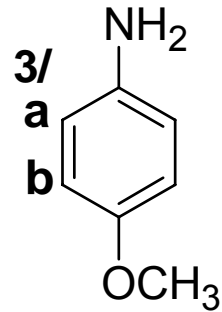
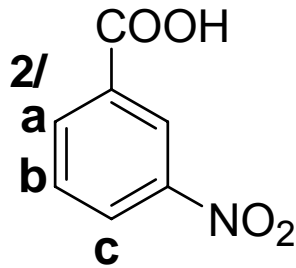
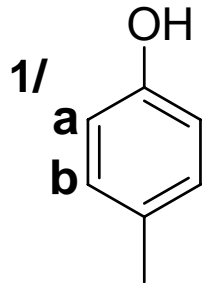
B)4, 5

C)1, 5

D)3, 5

E)2, 3, 5

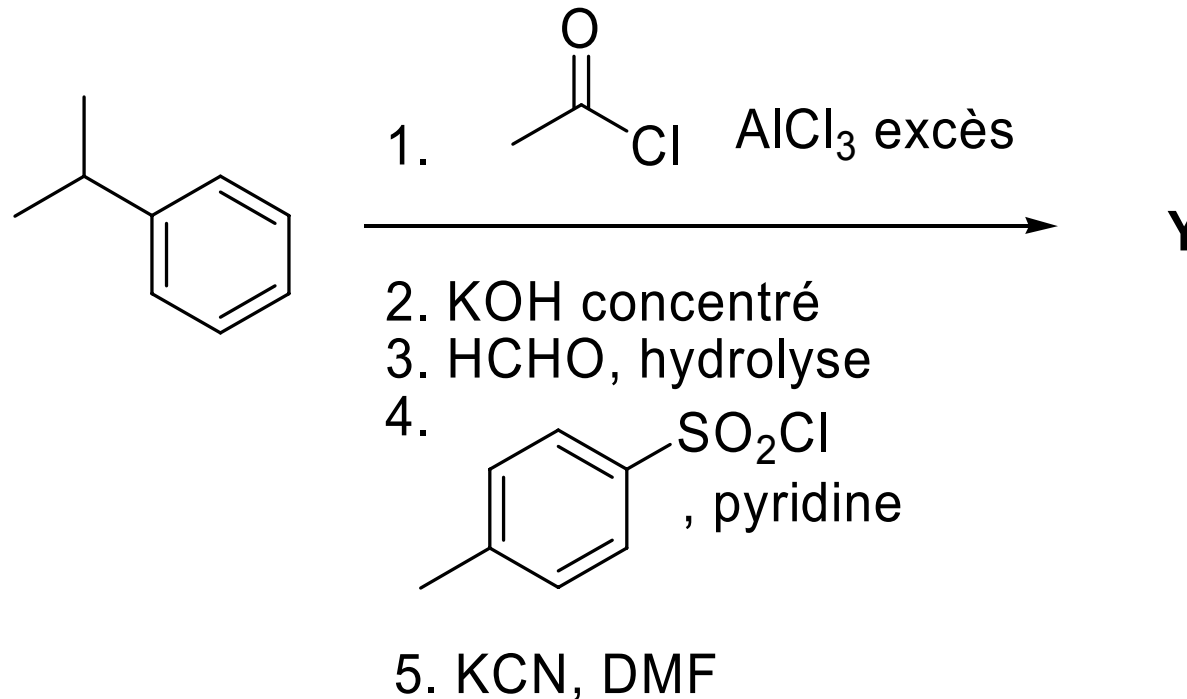
**Exercice 6 :** Indiquer l'orientation de la sulfonation ( $\text{SO}_3 / \text{H}_2\text{SO}_4$ ) pour chacun des substrats suivants.



**Indiquer l'item correct :**

- A/ 1a 2c 3b 4a
- B/ 1a 2b 3a 4b
- C/ 1b 2a 3b 4a
- D/ 1a 2b 3b 4b
- E/ 1a 2c 3a 4a

**Exercice 7 :** Donner le nom du produit Y formé par la séquence de réactions suivantes :



- A. 3-cyano-1-(4-(méthyléthyl)phényl)propan-1-one
- B. 4-(4-(méthyléthyl)phényl)-4-oxobutanenitrile
- C. 2-cyano-1-(4-(méthyléthyl)phényl)propan-1-one
- D. 2-hydroxy-1-(4-(méthyléthyl)phényl)propan-1-one
- E. 4-(3-(méthyléthyl)phényl)-4-oxobutanenitrile