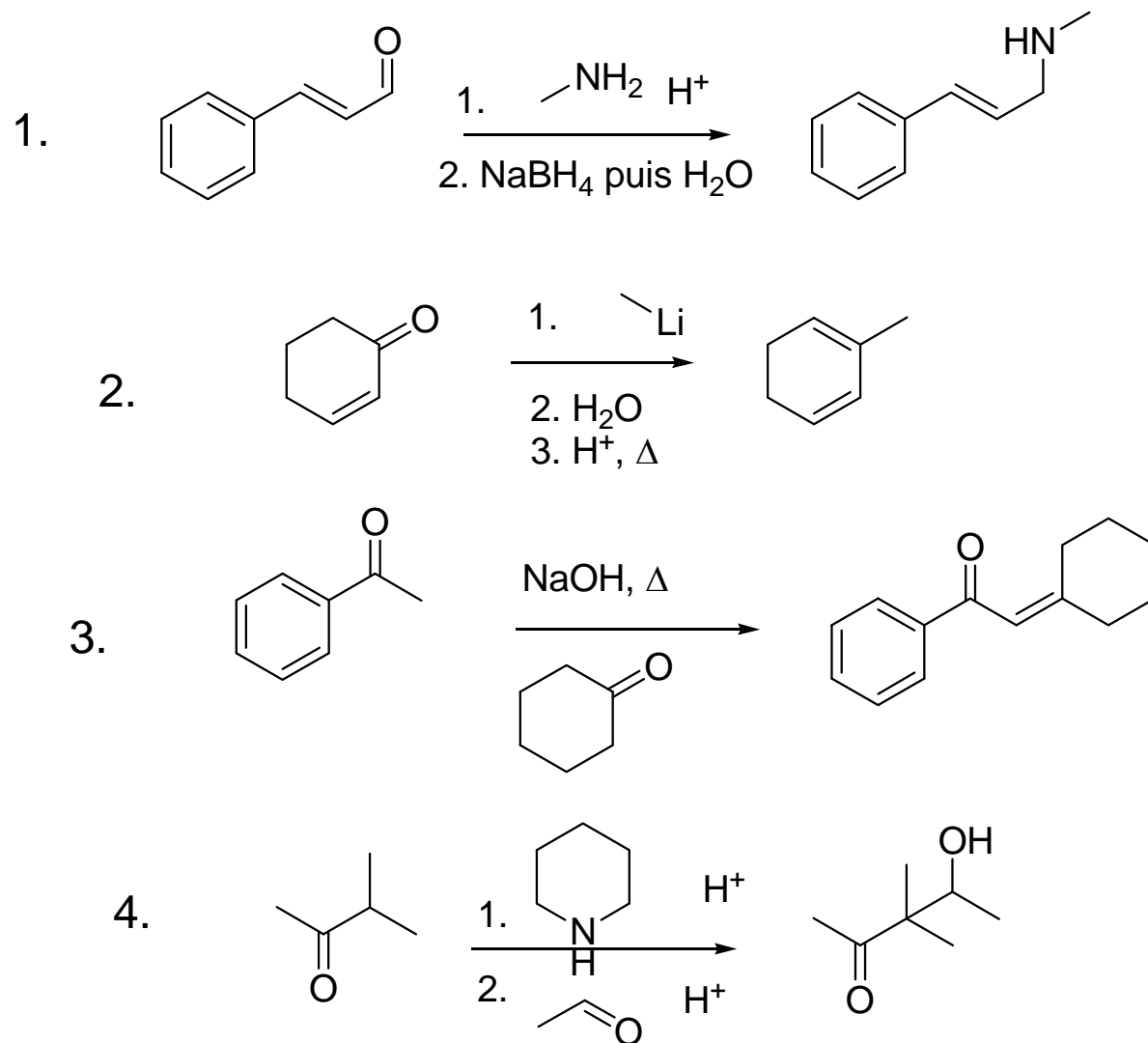


Exercice 1

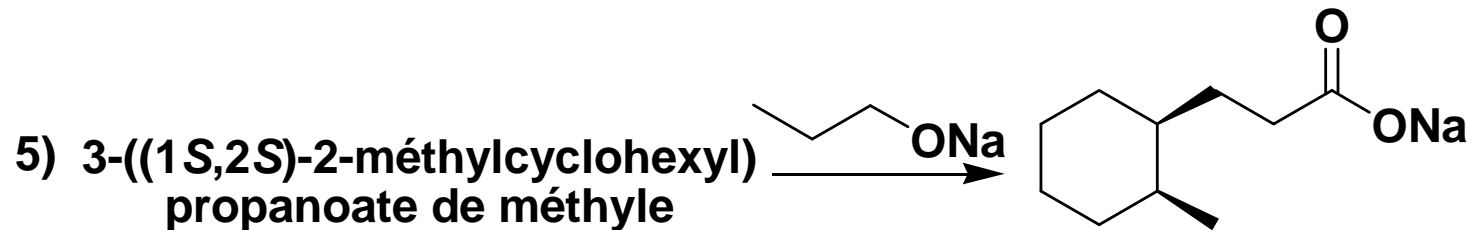
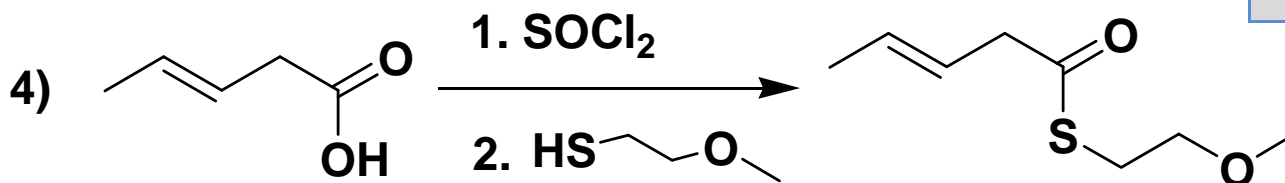
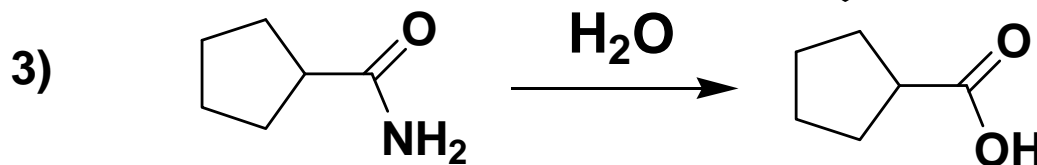
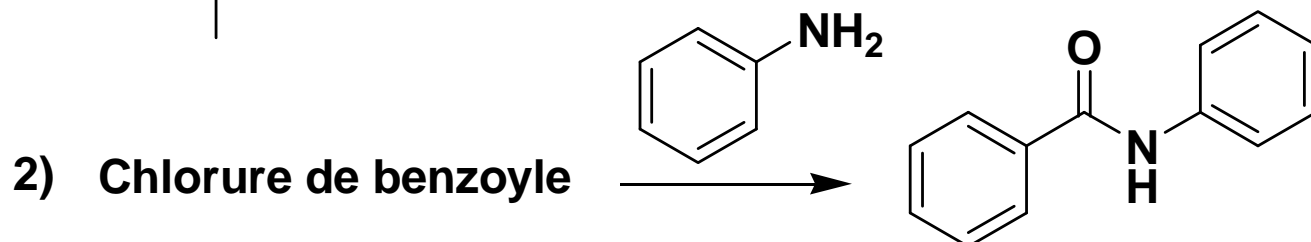
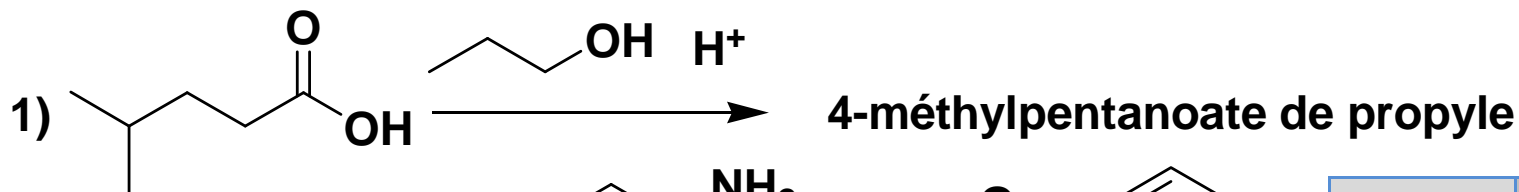
Indiquer parmi les réactions suivantes les propositions **correctes** en considérant le produit majoritaire.



A	1,2,3
B	2,3
C	1,2,3,4
D	1,2,4
E	1,3

Exercice 2

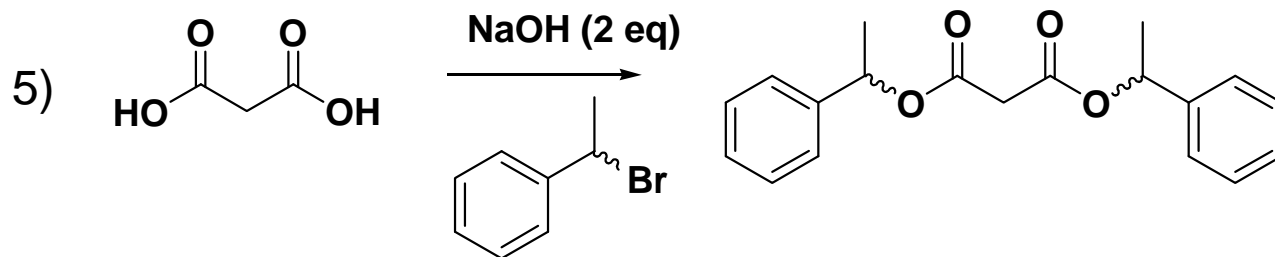
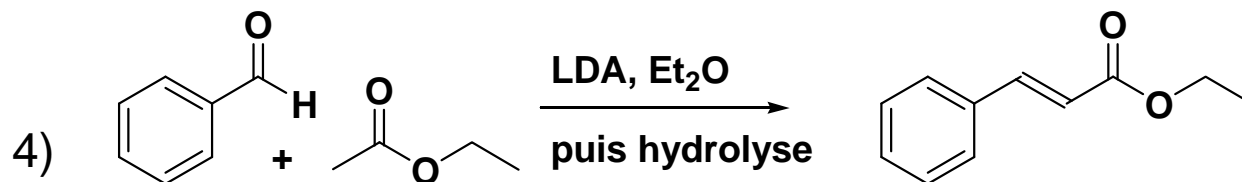
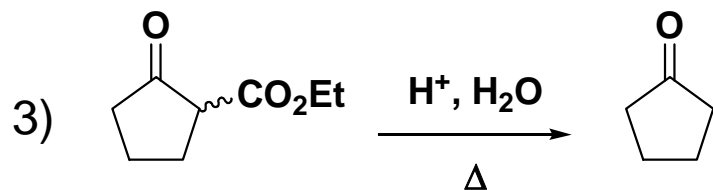
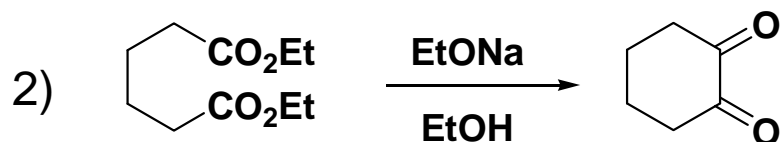
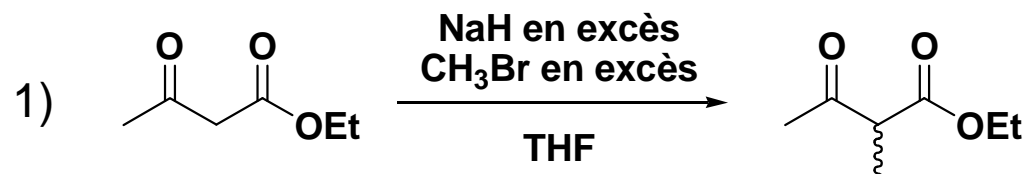
Indiquer parmi les réactions suivantes les propositions **fausses** en considérant le produit majoritaire ainsi que la nomenclature.



A	1,2,3
B	3,5
C	1,2,3,4
D	2,5
E	3,4

Exercice 3 :

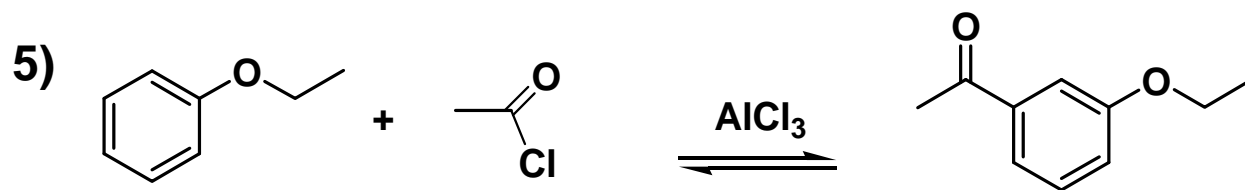
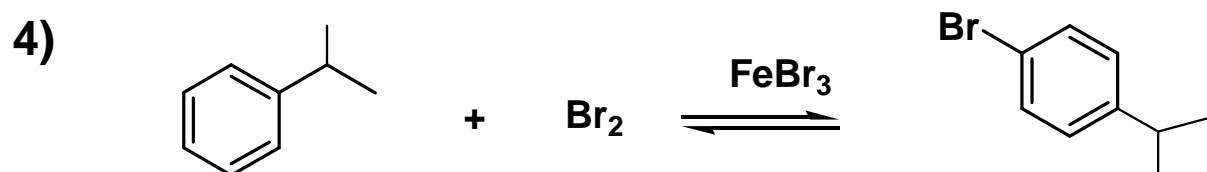
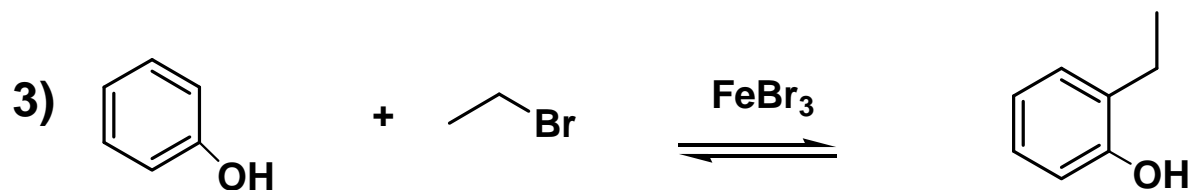
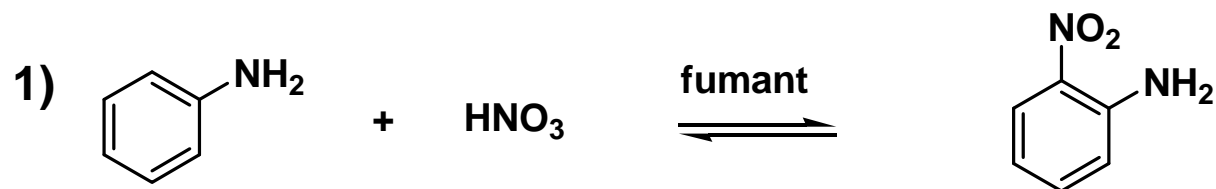
Parmi les réactions suivantes indiquer les propositions **correctes**.



A	1,2
B	1,3,5
C	1,3,4
D	3,5
E	2,4

Exercice 4 :

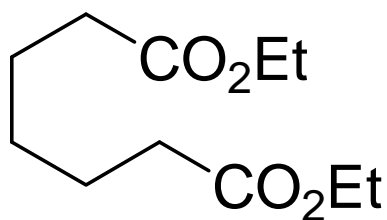
Parmi les réactions suivantes indiquer les propositions **correctes** en ne tenant compte que des produits majoritaires



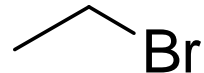
A	1,2
B	3,4
C	1,2,5
D	4
E	2,3,4

Exercice 5 :

Le composé **Z** est synthétisé en 4 étapes à partir de **Y**. Parmi les structures proposées, indiquer celle qui correspond à **Z**.



1. EtONa/EtOH

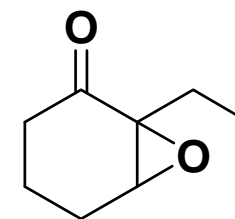
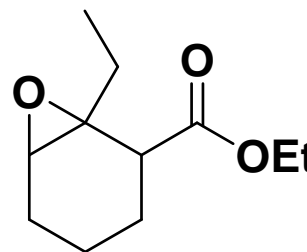
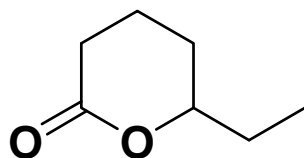
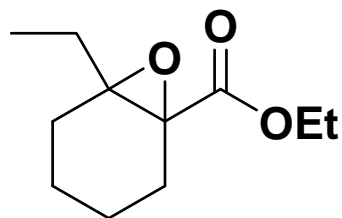
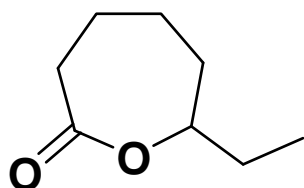
2. NaH,  Br



Z

3. H₂O, H⁺, Δ

4. mCPBA



A

B

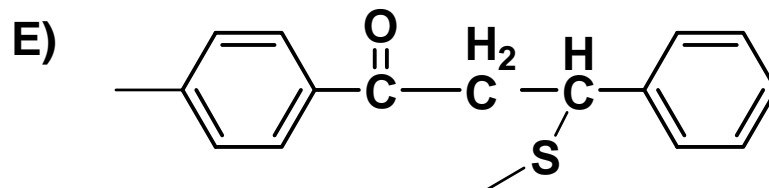
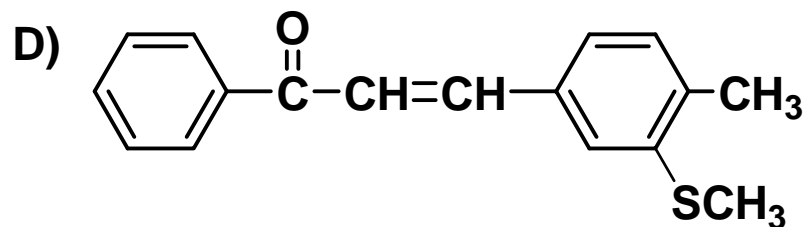
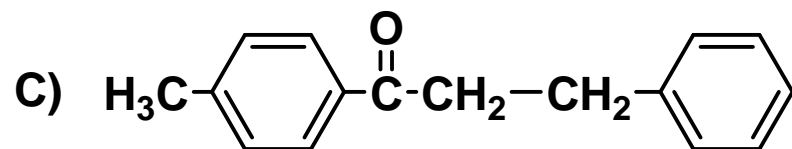
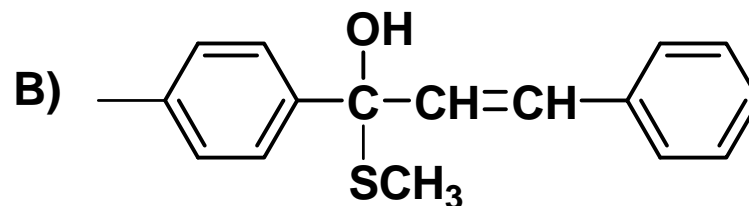
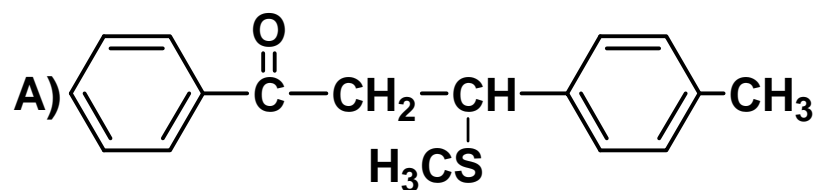
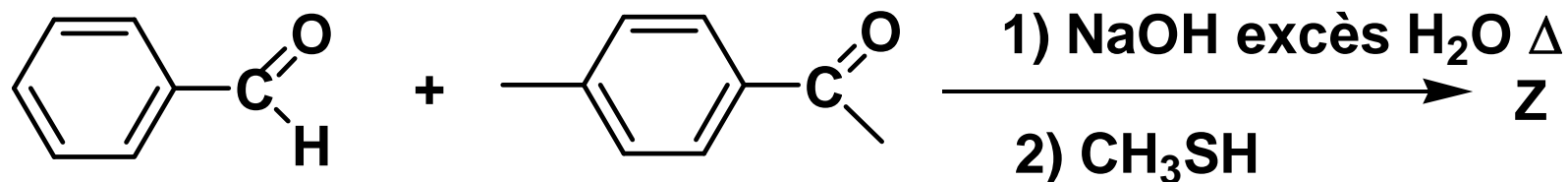
C

D

E

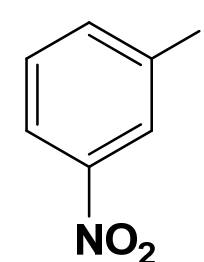
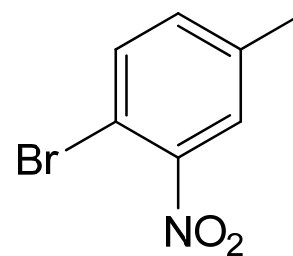
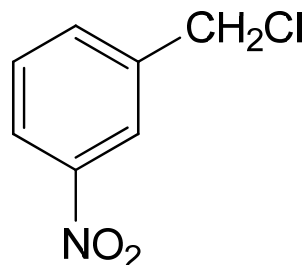
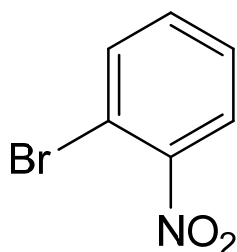
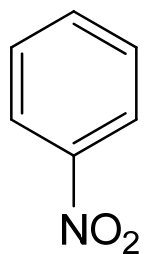
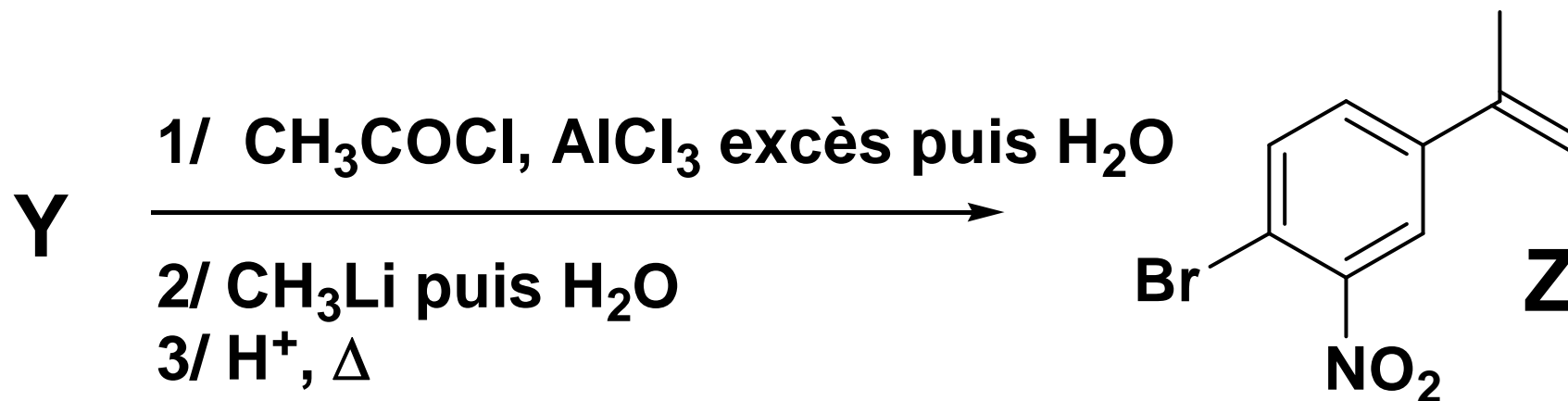
Exercice 6 :

Le composé **Z** est synthétisé par la synthèse suivante. Donner sa structure la plus probable.



Exercice 6 :

Le composé **Z** est synthétisé en 3 étapes à partir de **Y**. Proposer une structure pour **Y**.



A	B	C	D	E
----------	----------	----------	----------	----------