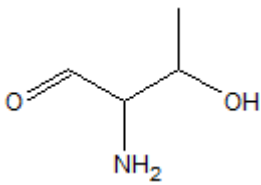
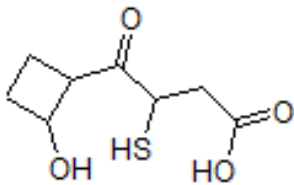


## Correction exercices Tut' rentrée

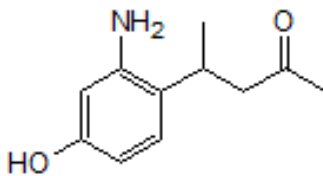
### Nomenclature



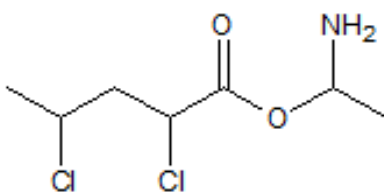
Fonction principale = aldéhyde, suffixe al  
Fonctions secondaires = alcool (hydroxy-) et amine (amino-)  
Hydrure parent = butane  
→ **2-amino-3-hydroxybutanal**



fonction principale = acide (acide -oïque)  
fonctions secondaires = thiol (sulfanyl-) alcool (hydroxy-) cétone (oxo-)  
hydrure parent = butane  
→ **Acide 4-(2-hydroxycyclobutyl)-4-oxo-3-sulfanylbutanoïque**



fonction principale = cétone -one  
fonctions secondaires = amine et alcool  
hydrure parent = pentane  
→ **4-(2-amino-4-hydroxyphényl)pentan-2-one**

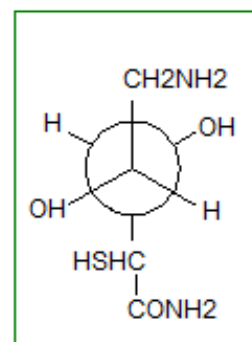
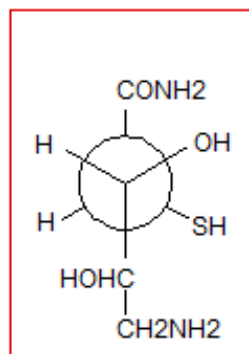
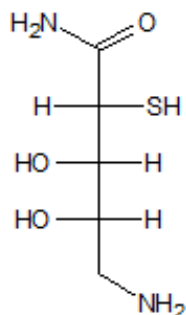


fonction principale = ester  
fonctions secondaires = chlore et amine  
chaînes carbonées = pentane et éthane  
→ **2,4-dichloropentanoate de 1-aminoéthyle**

### Cours – V/F

1F 2F 3V 4F 5F

### Représentations



## Configurations

