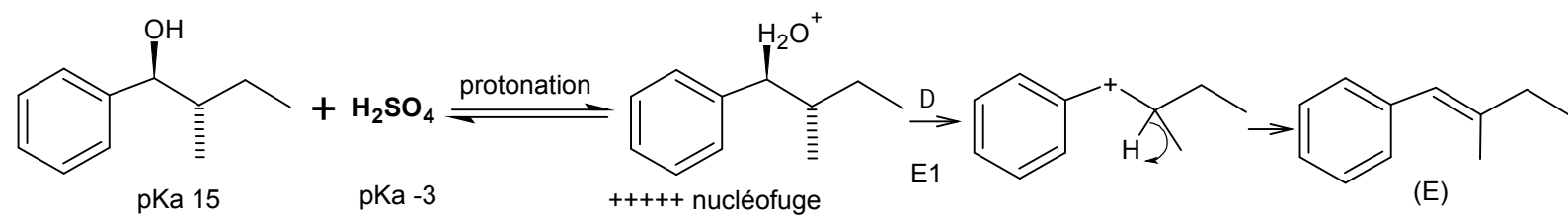
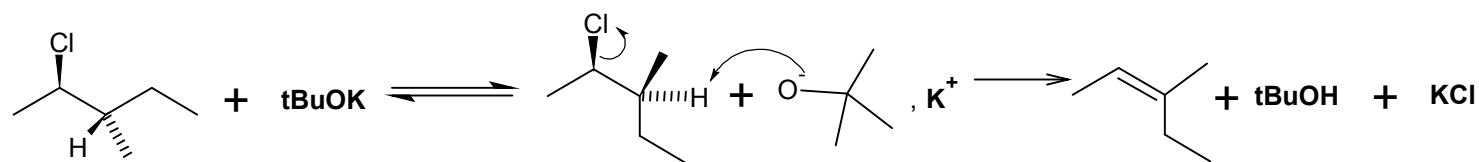
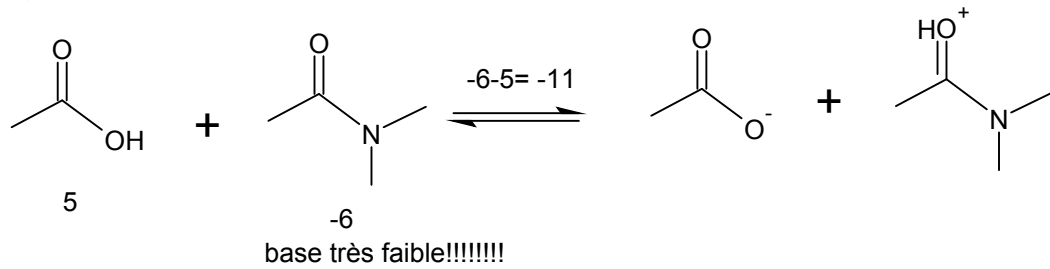
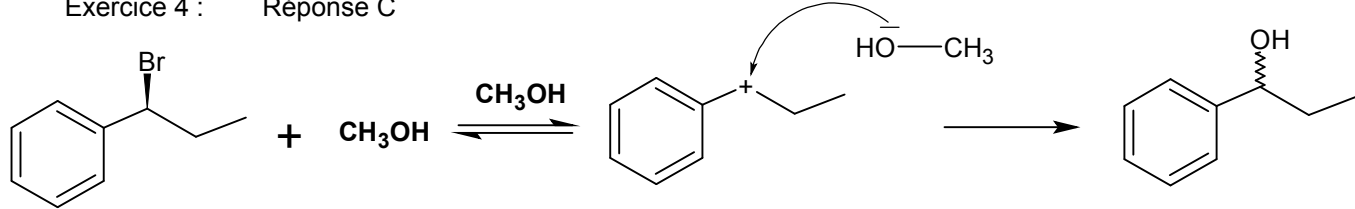
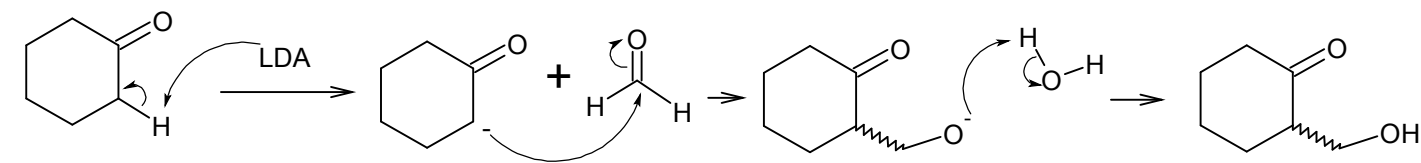
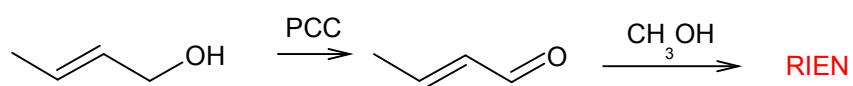
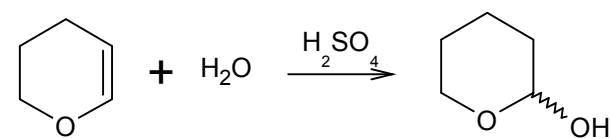
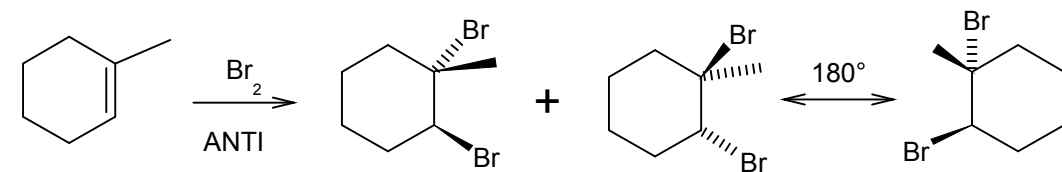


Exercice 4 : Réponse C

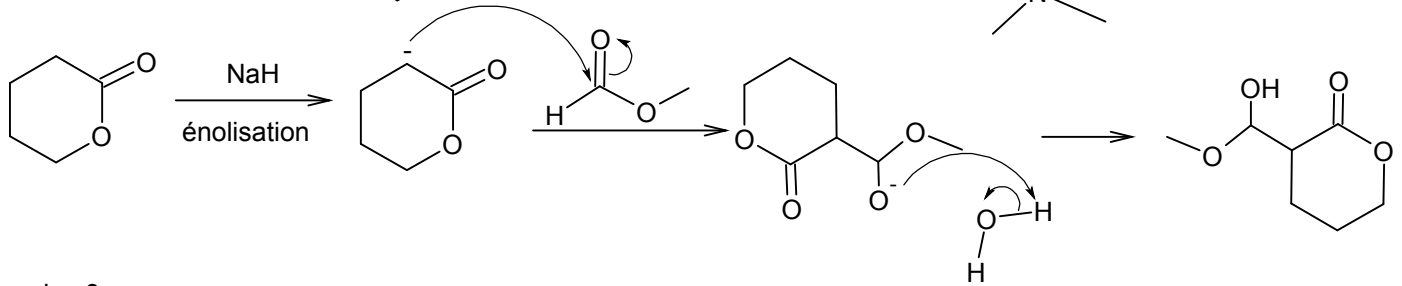
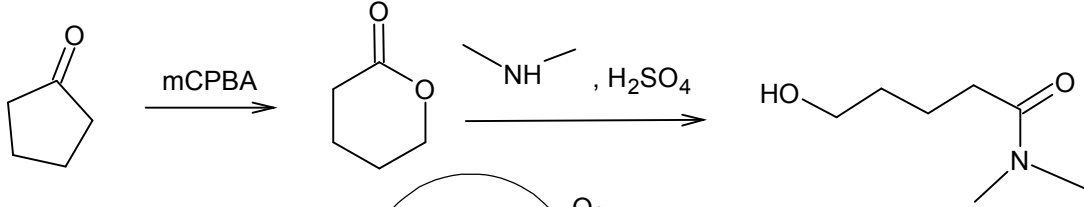
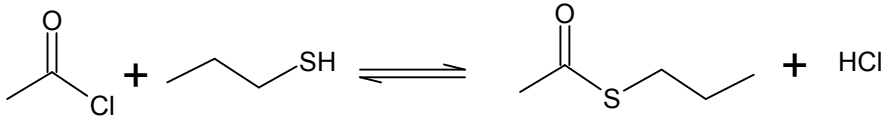
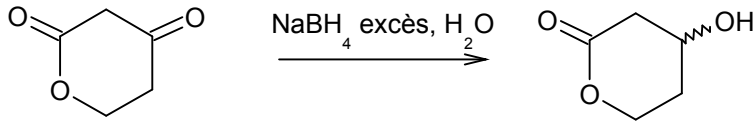


Exercice 6 : Réponse C

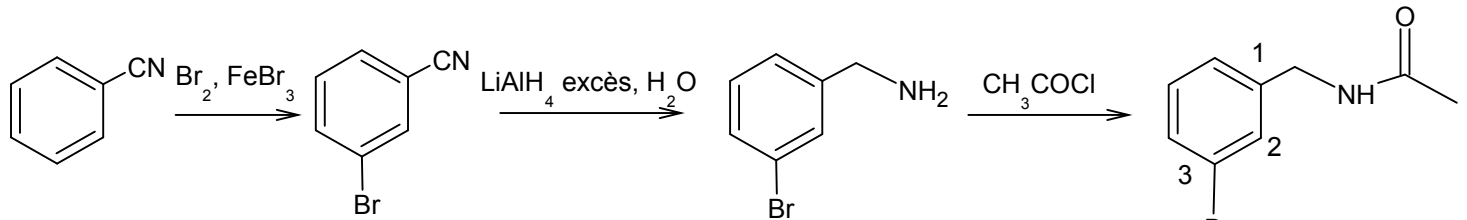
E1 : non stéréosélective, MAIS stéréosélective, alcène E majoritaire car plus stable



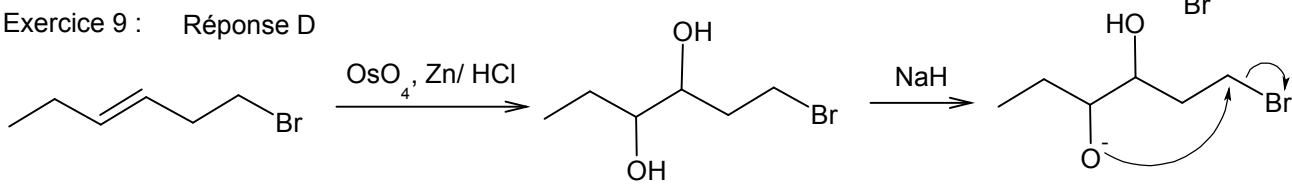
Exercice 7 Réponse E



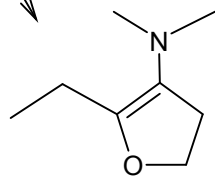
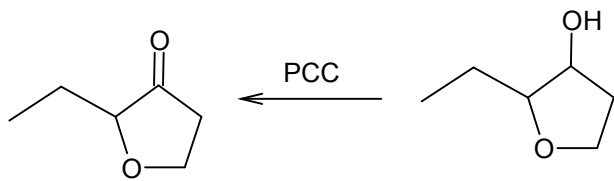
Exercice 8 : Réponse C



Exercice 9 : Réponse D



stéro pas importante ici



Exercice 10 : Réponse C

