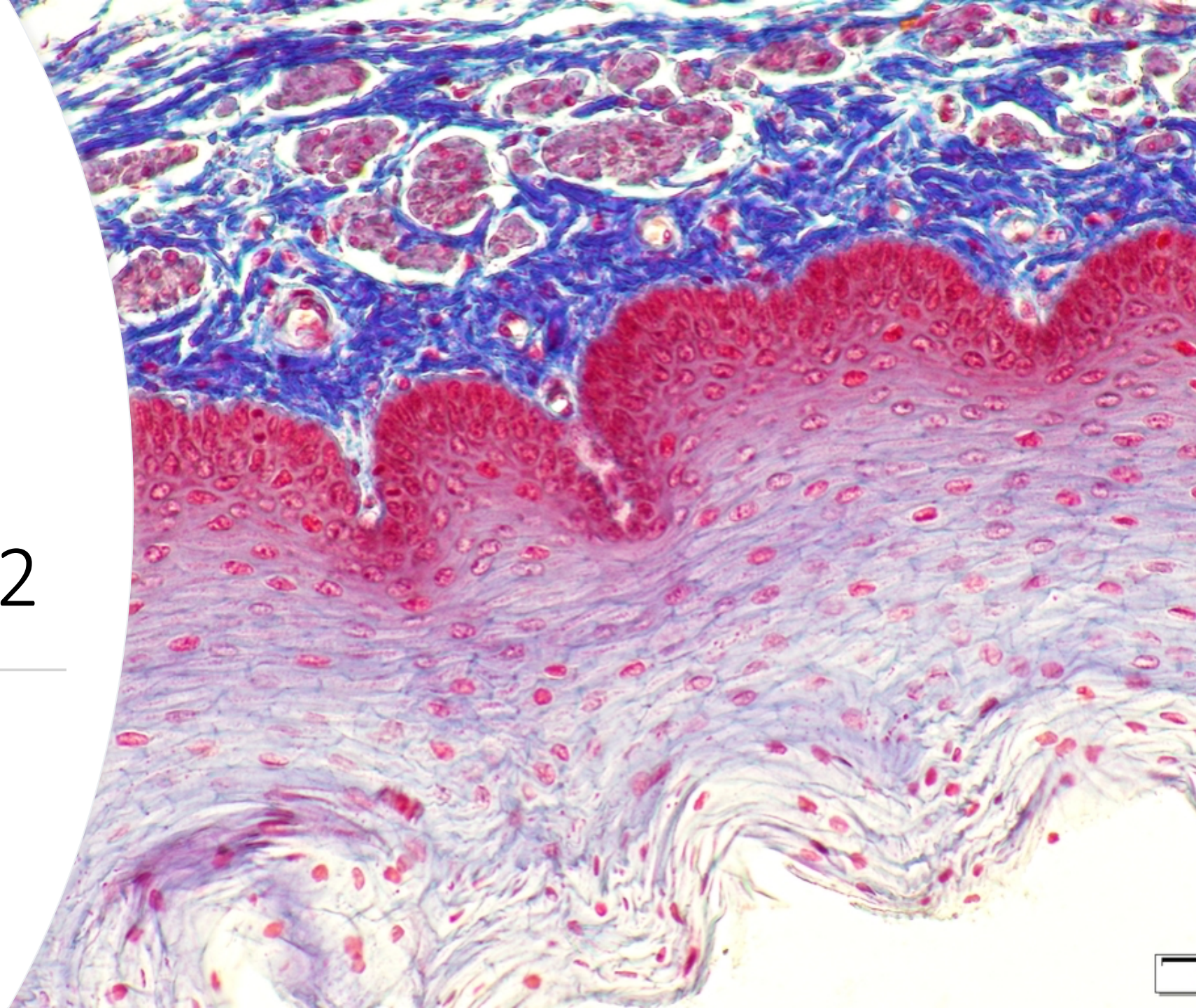


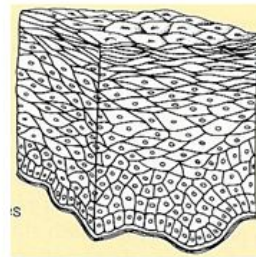


LES EPITHELIUMS 2

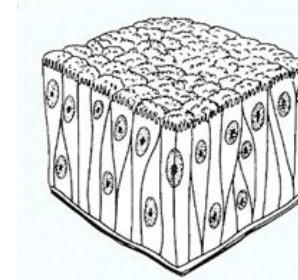
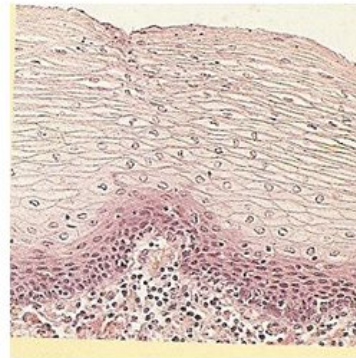


Les épithéliums de revêtement

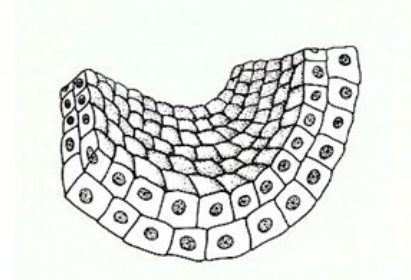
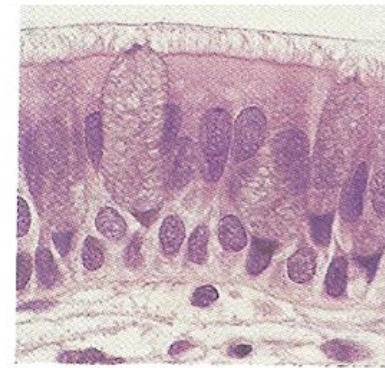
LES EPITHELIUMS DE REVETEMENT



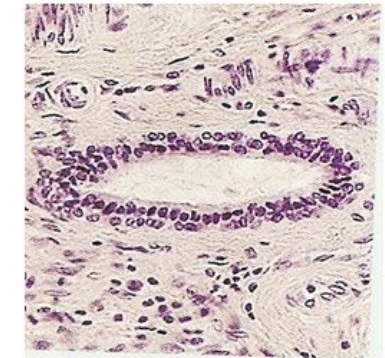
Epithélium stratifié



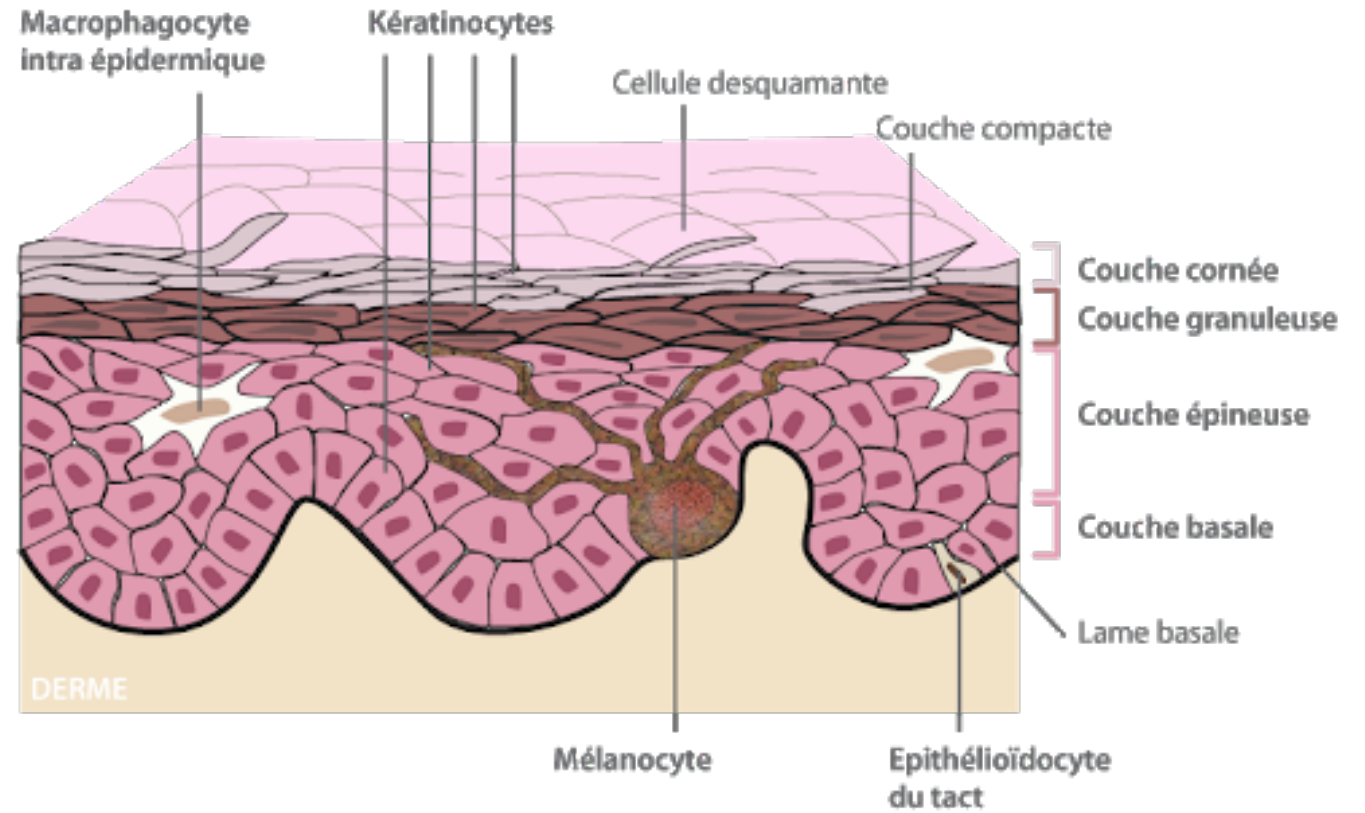
Epithélium pseudostratifié



Epithélium stratifié

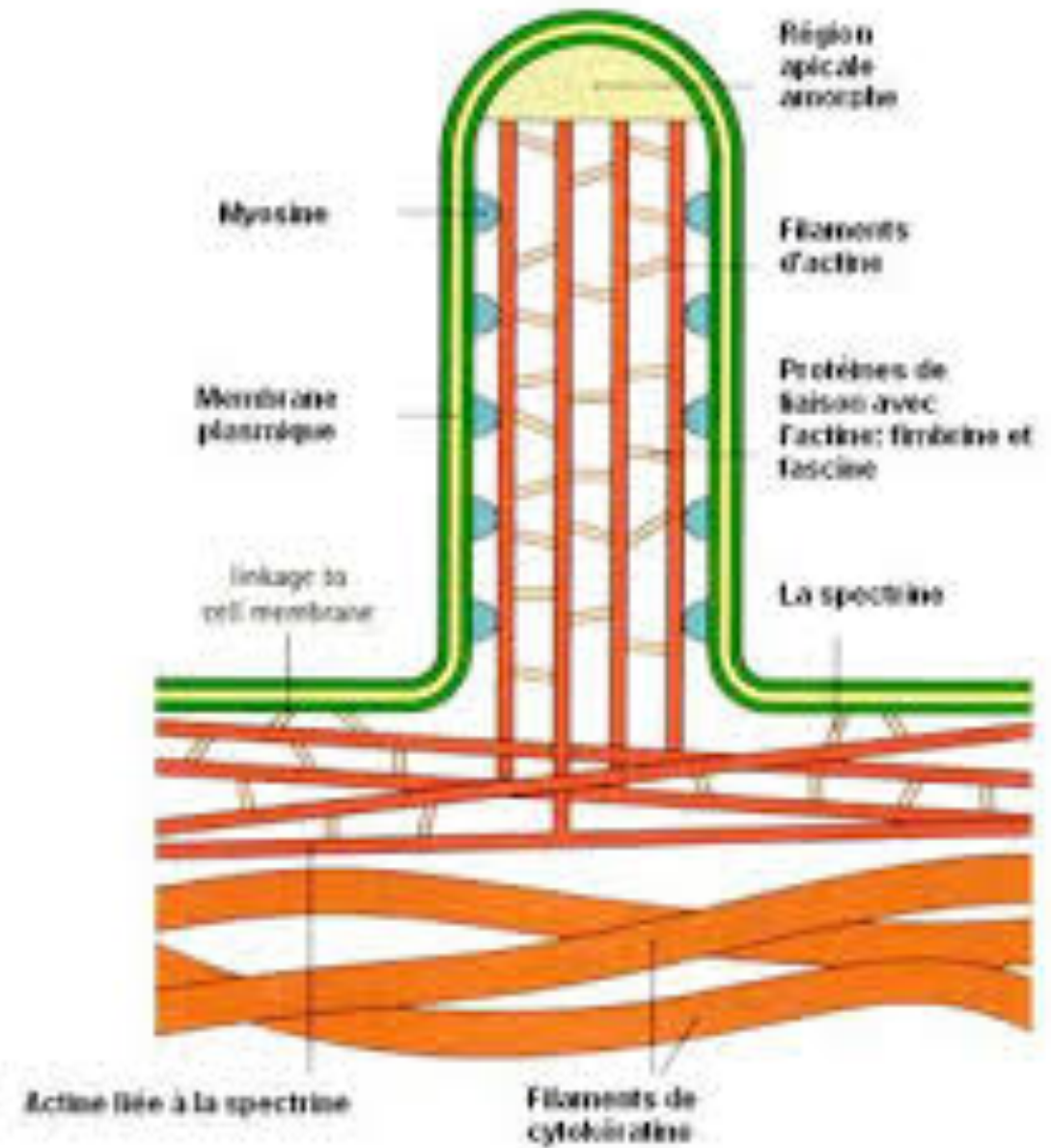


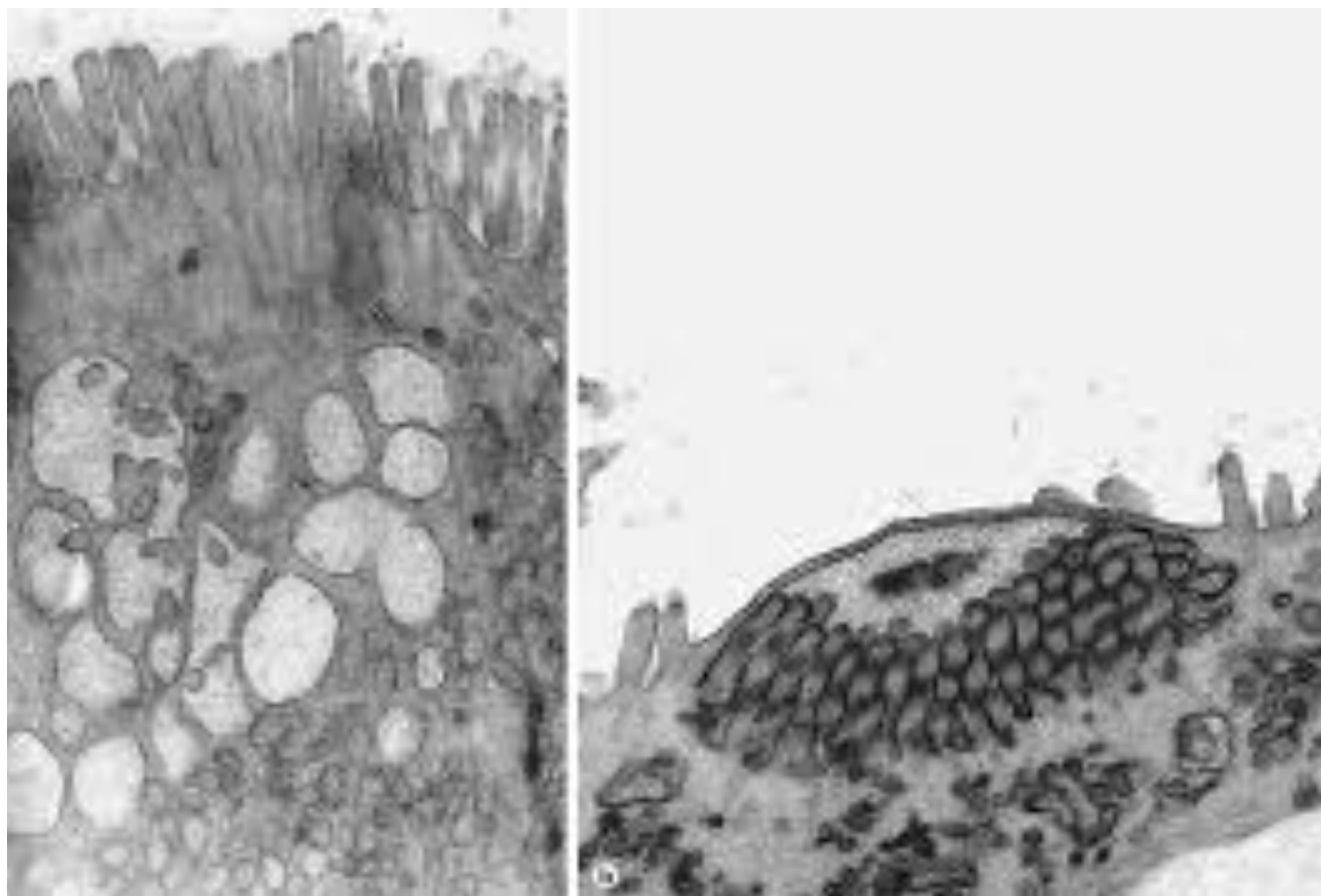
L'épiderme



Les quatre populations cellulaires de l'épiderme

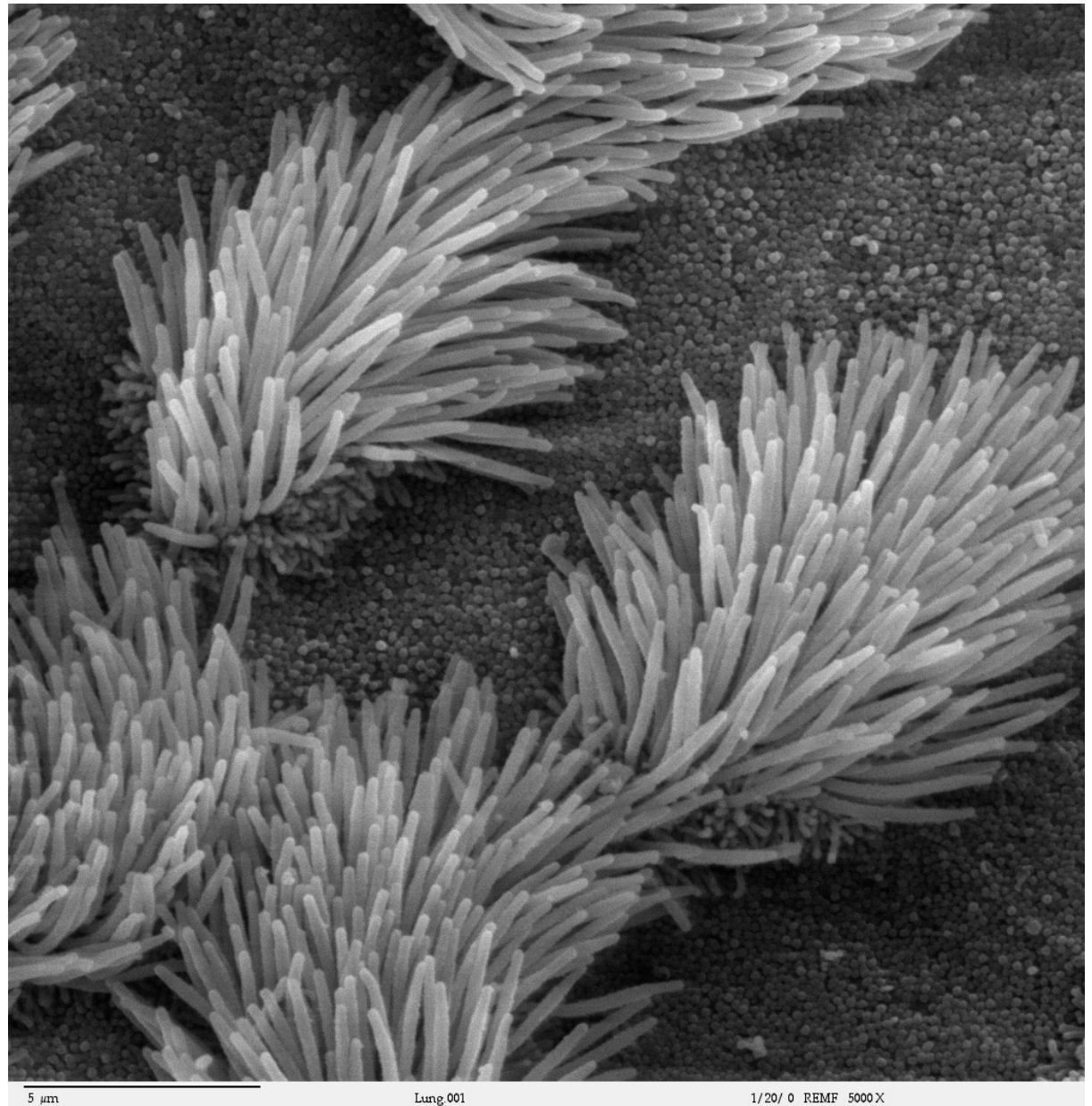
Les microvillosités





Pathologie
inclusion
villositaires

Les cils vibratiles

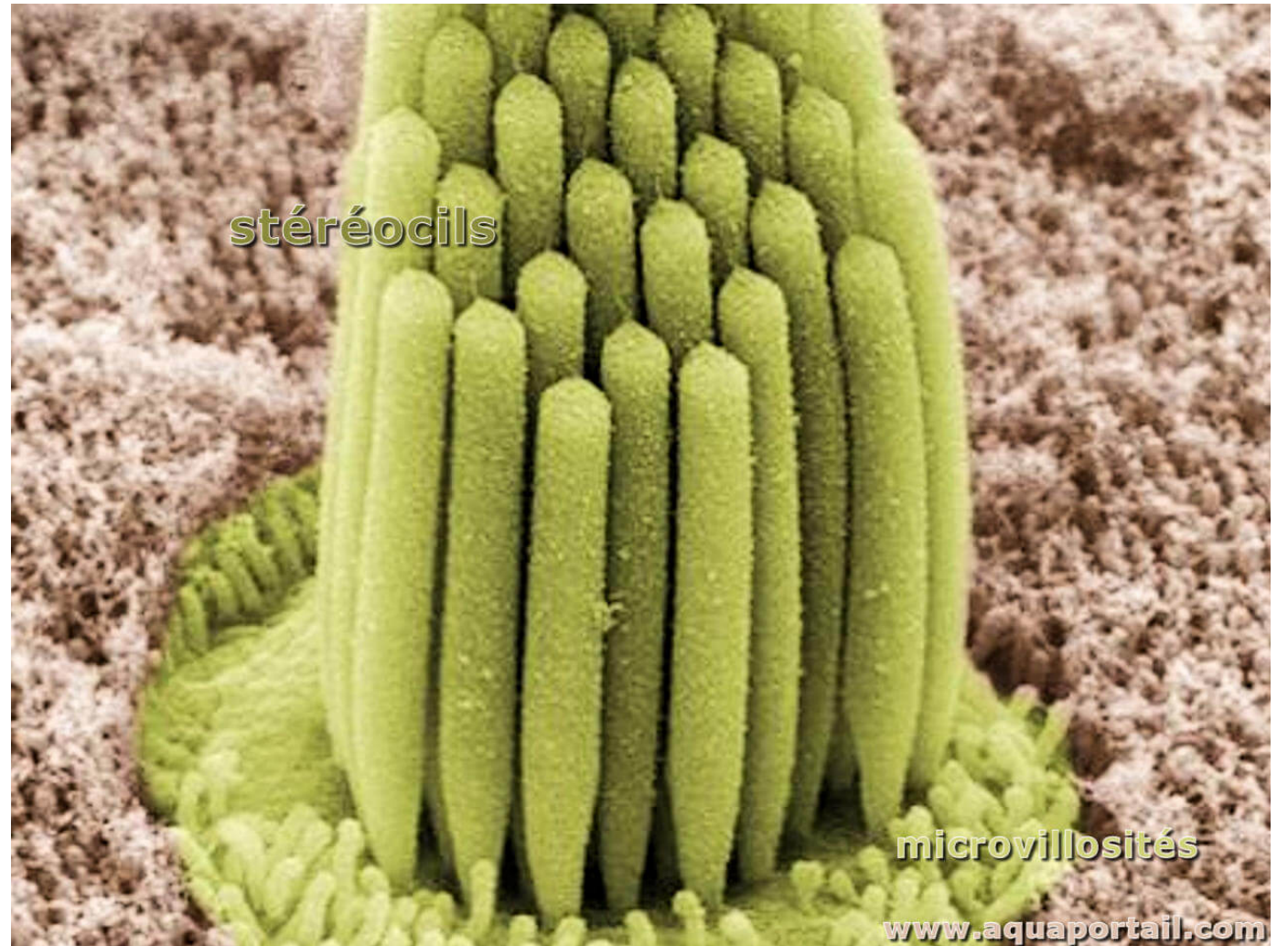


5 μm

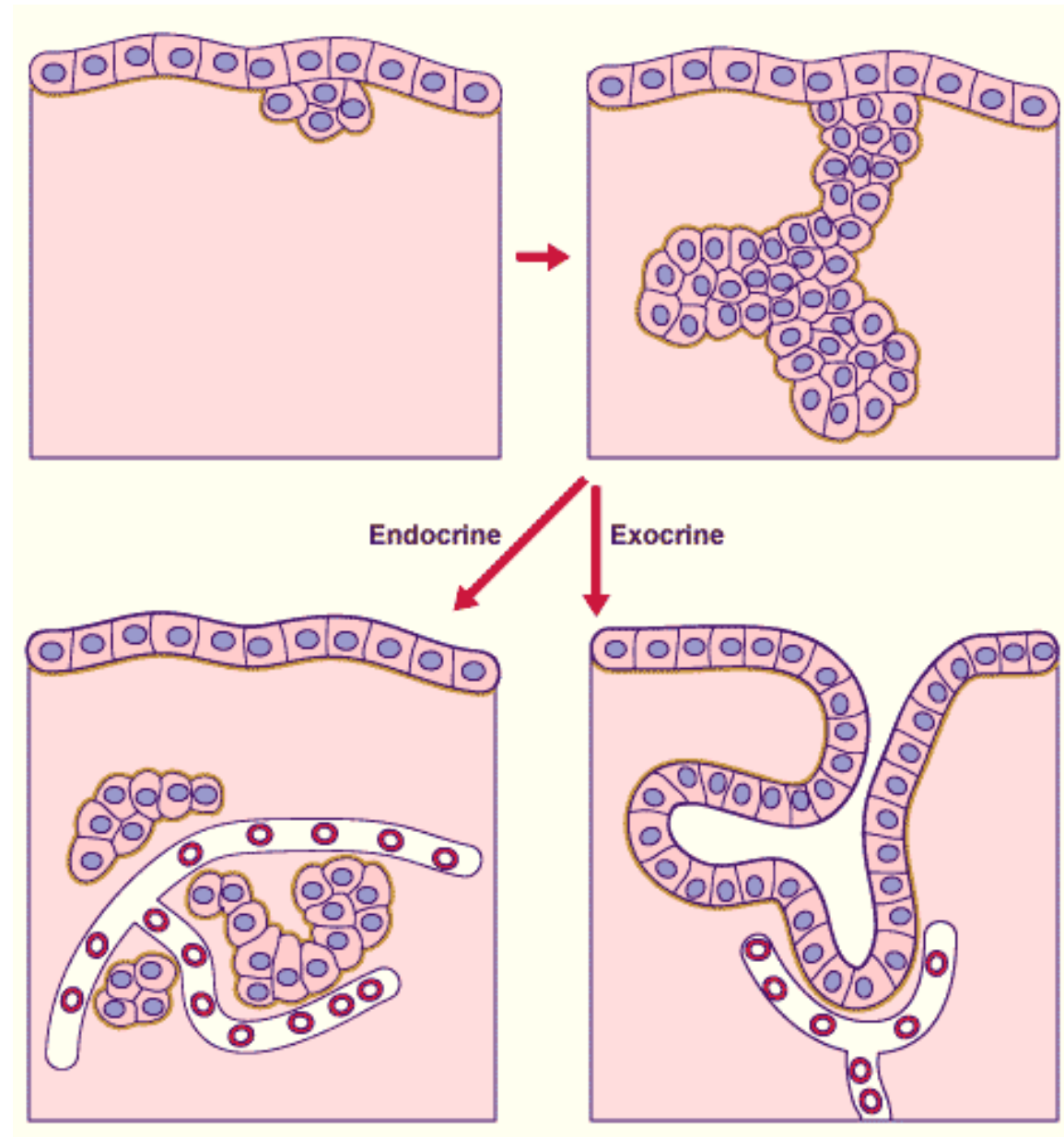
Lung.001

1/20/ 0 REMF 5000X

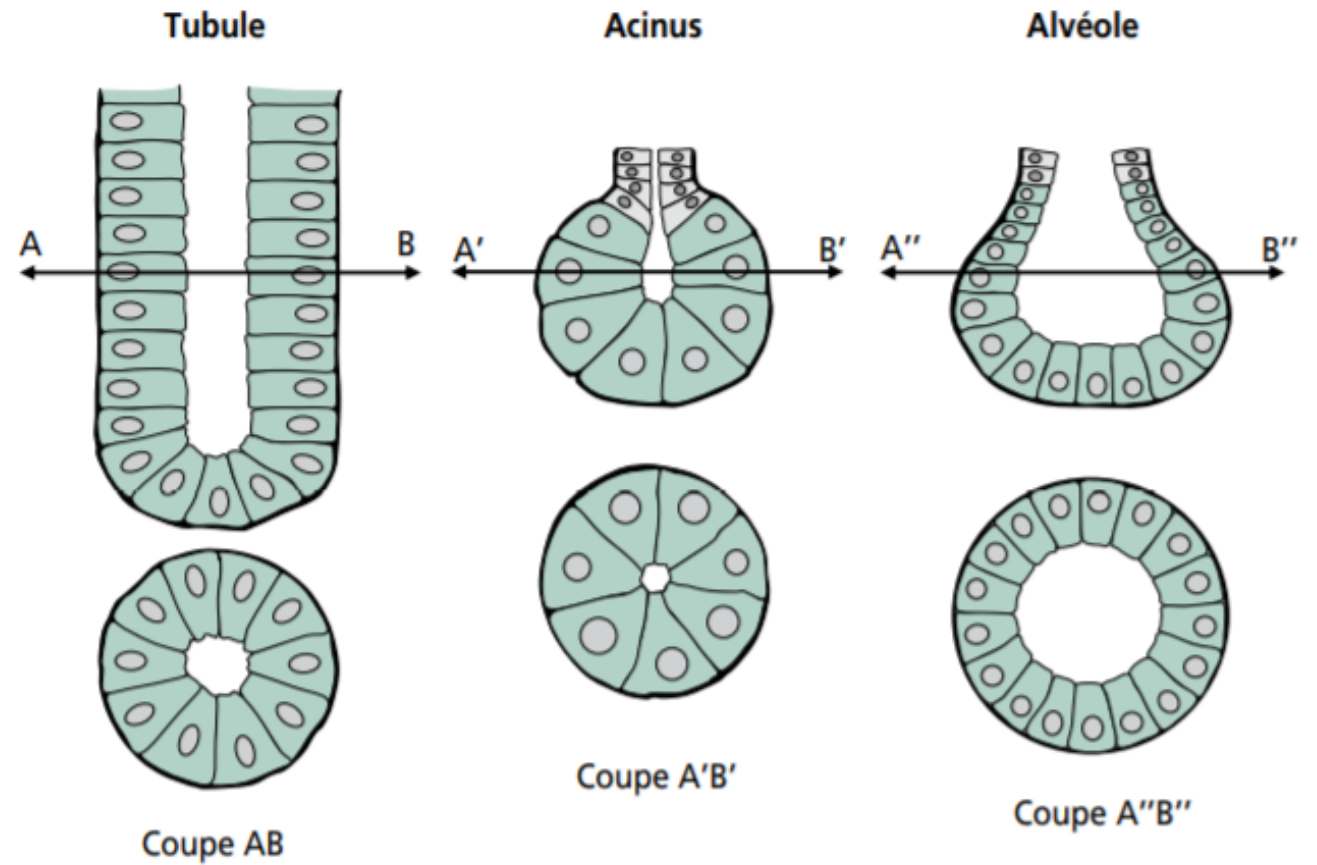
Les stéréocils



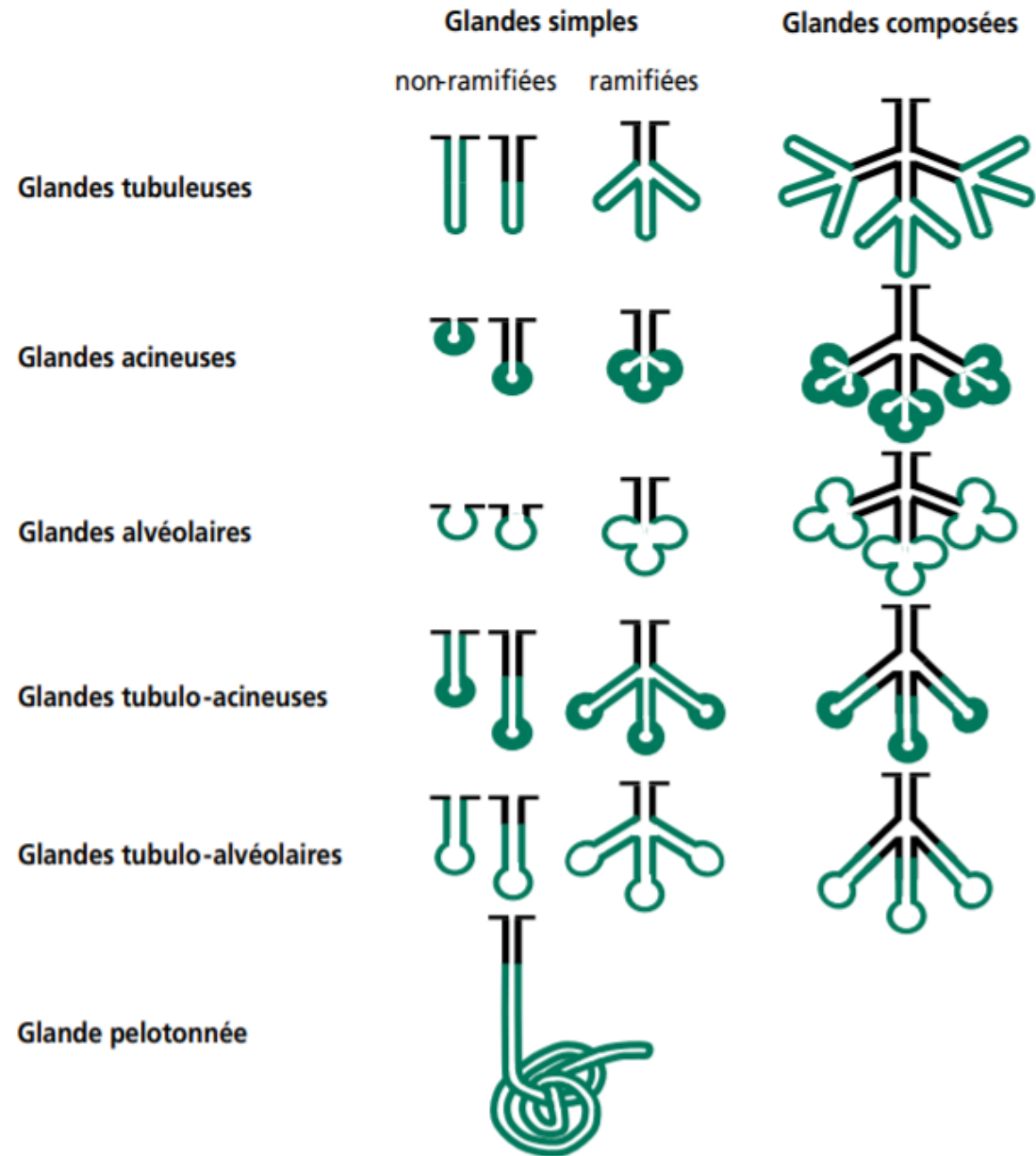
Epithelium glandulaire



Critère morphologique des unités sécrétrices



Critères morphologique des canaux sécréteurs

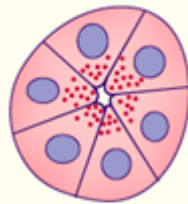


Nature des produits de sécrétion

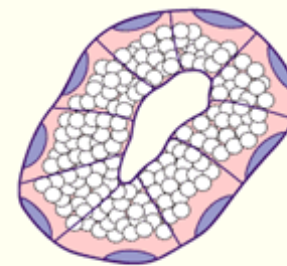
Classification des glandes exocrines :

Nature du produit de sécrétion

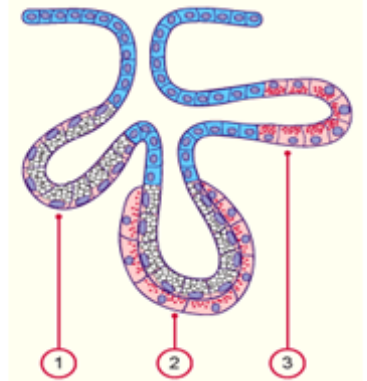
Glande séreuse



Glande muqueuse



Glandes séro-muqueuse
Muco-séreuse



Mode de sécrétion

