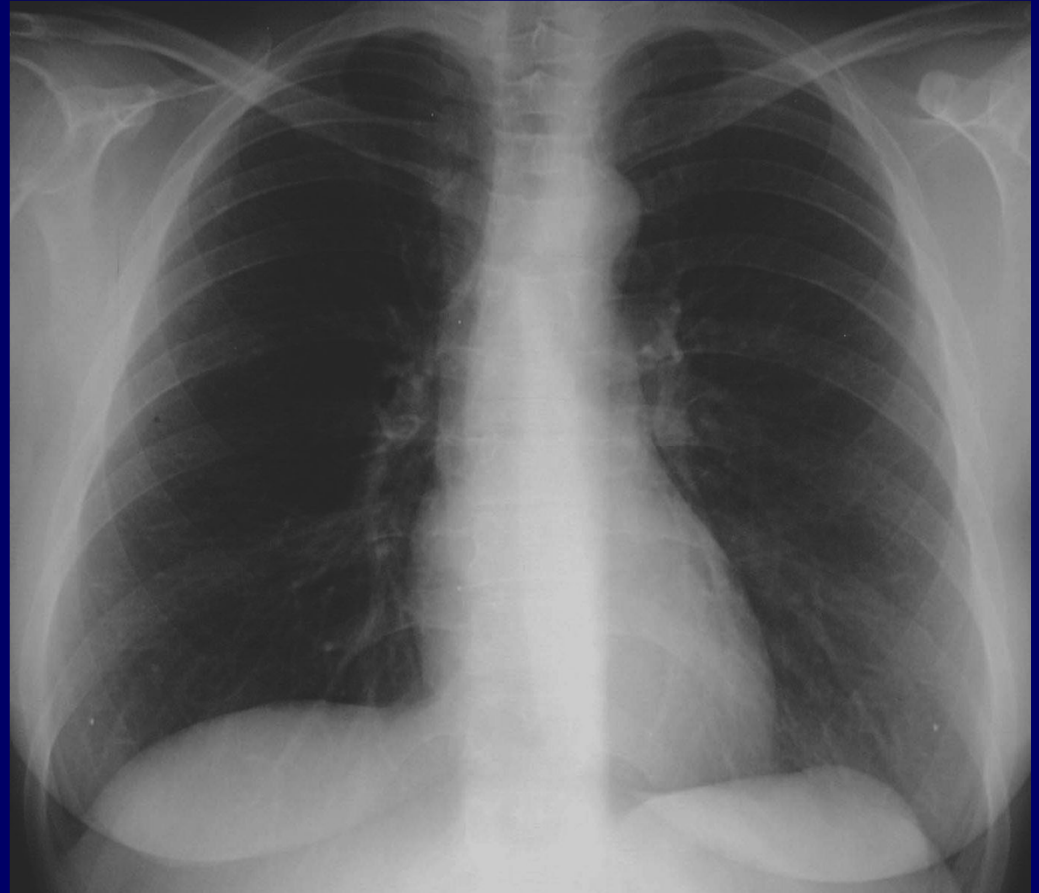
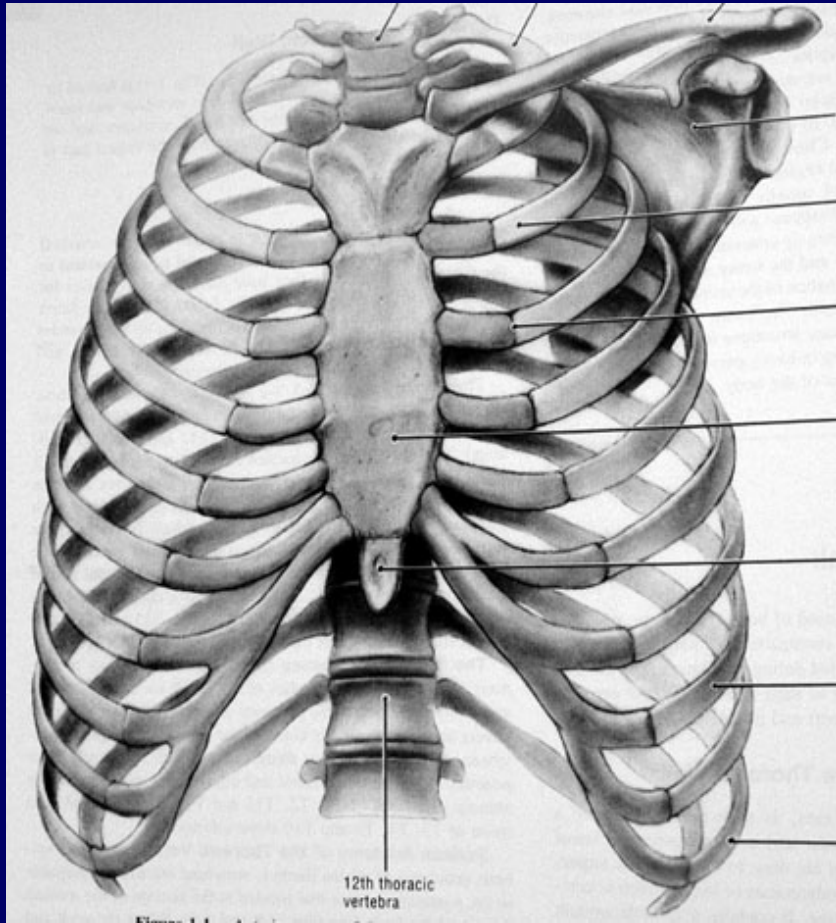
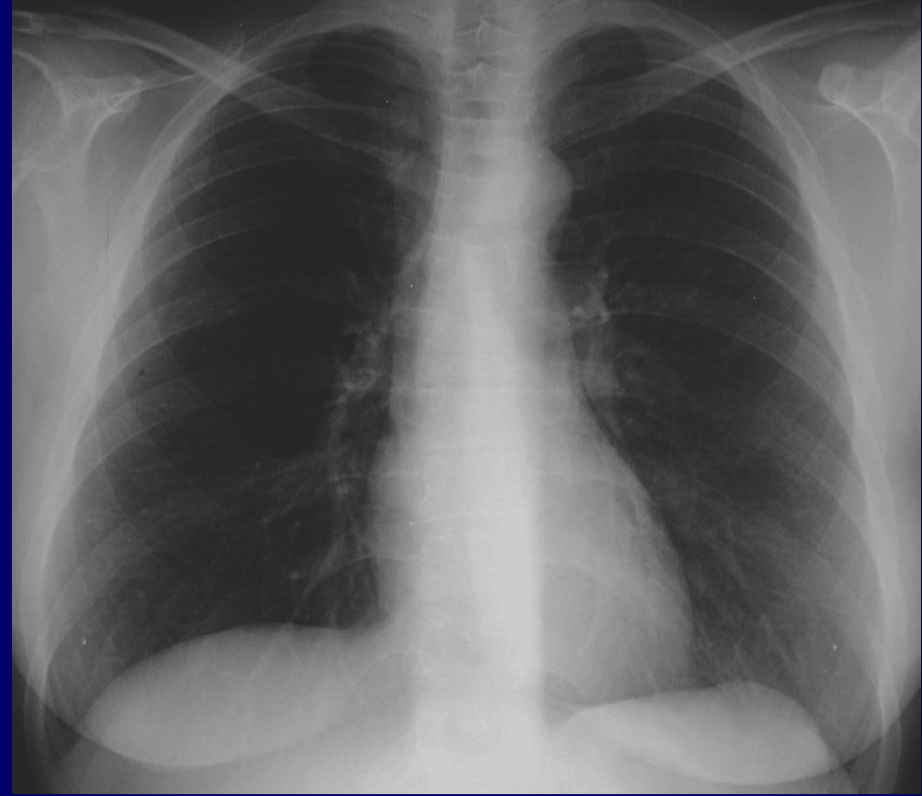
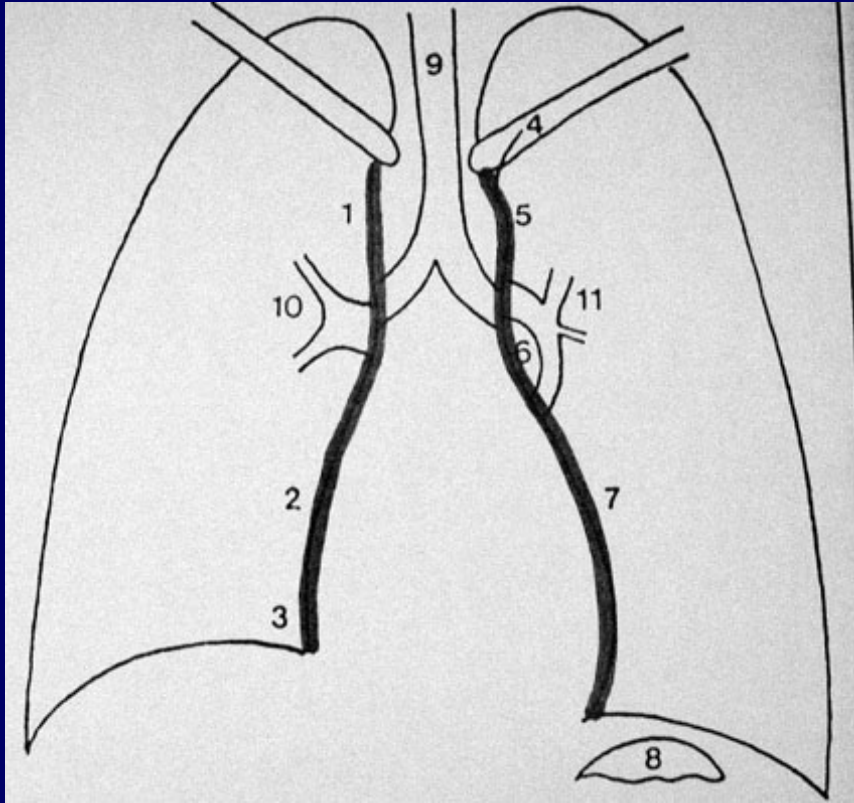


ANATOMIE RADIOLOGIQUE DU THORAX

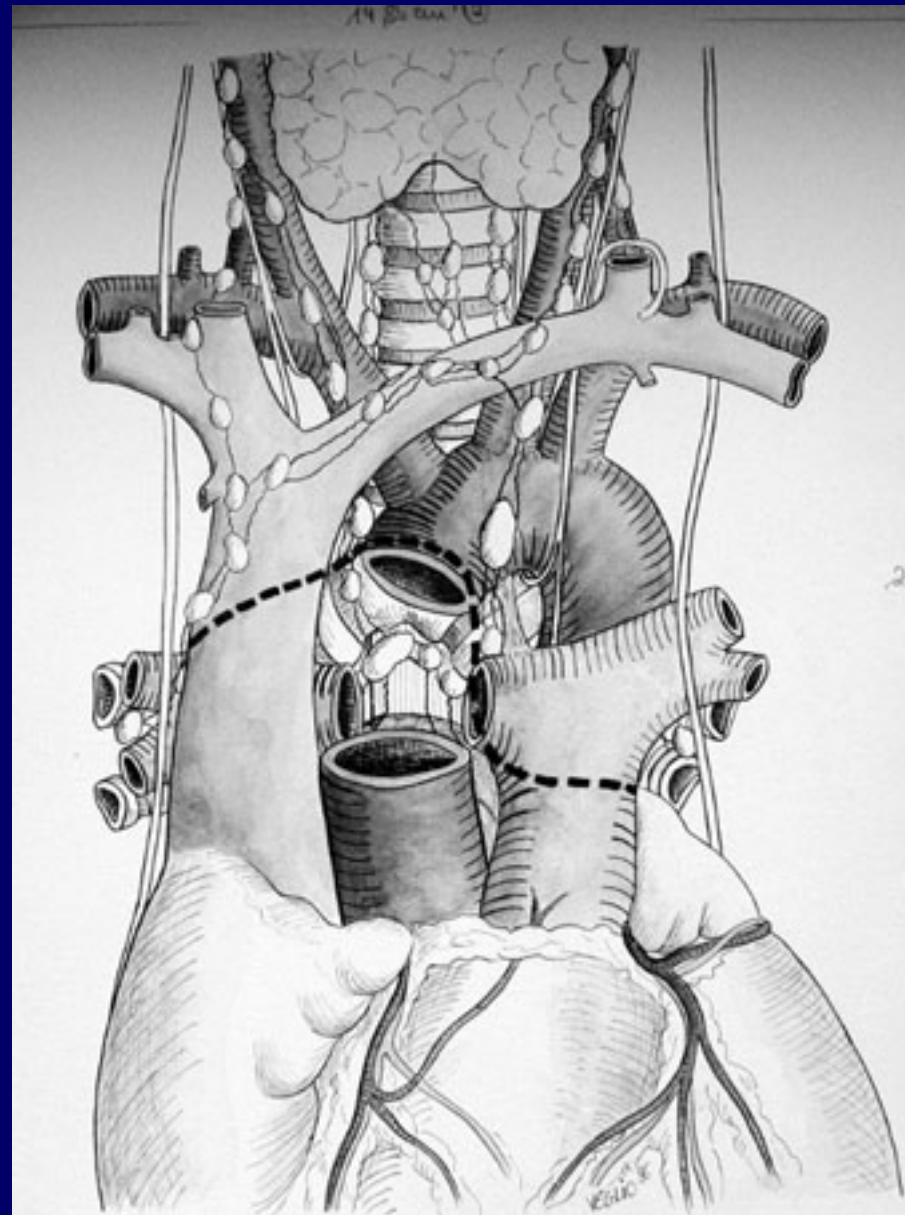
- La paroi osseuse
- Le médiastin (vaisseaux, cœur)
- Le parenchyme pulmonaire et les bronches, la plèvre

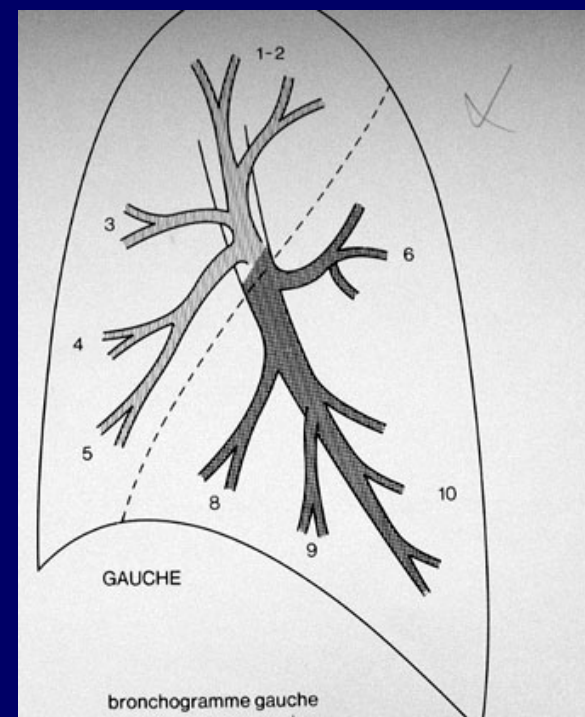
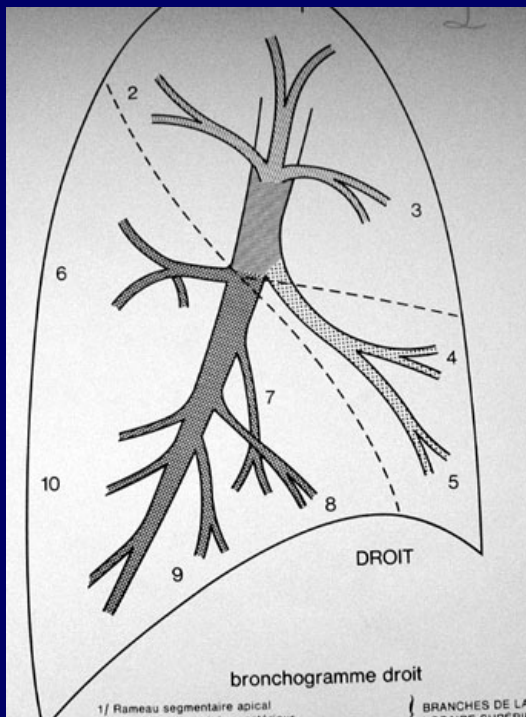
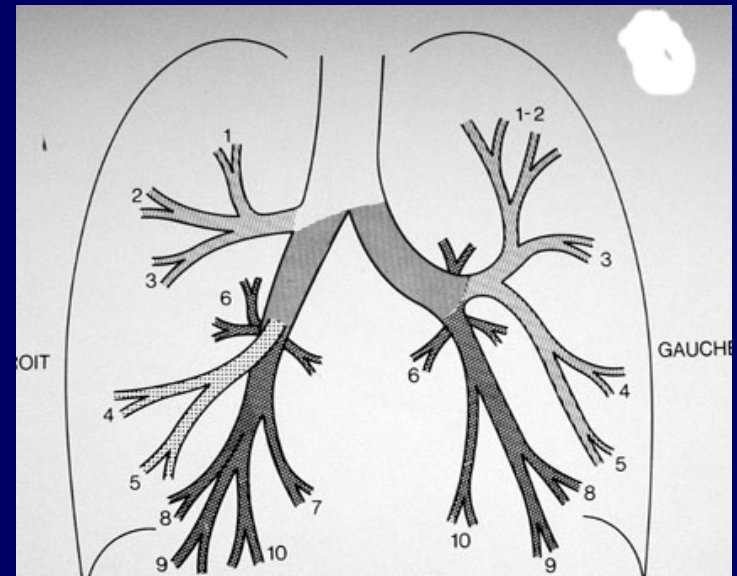
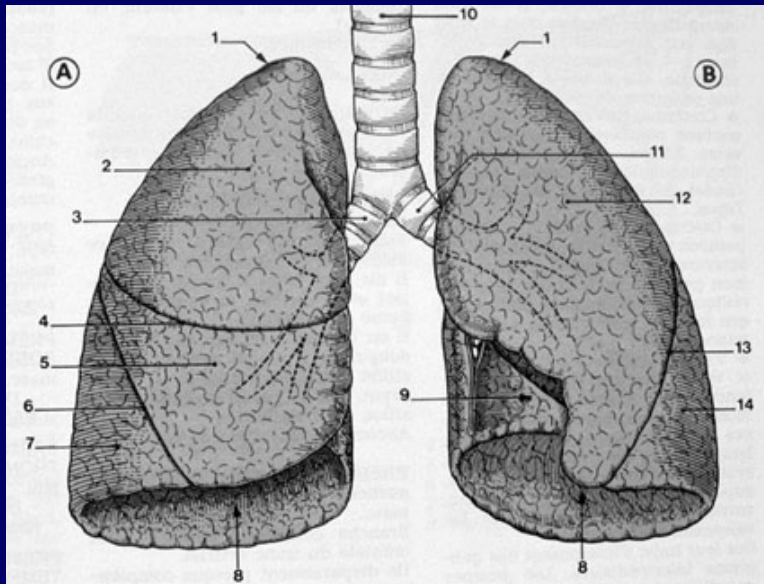


Les contours du médiastin

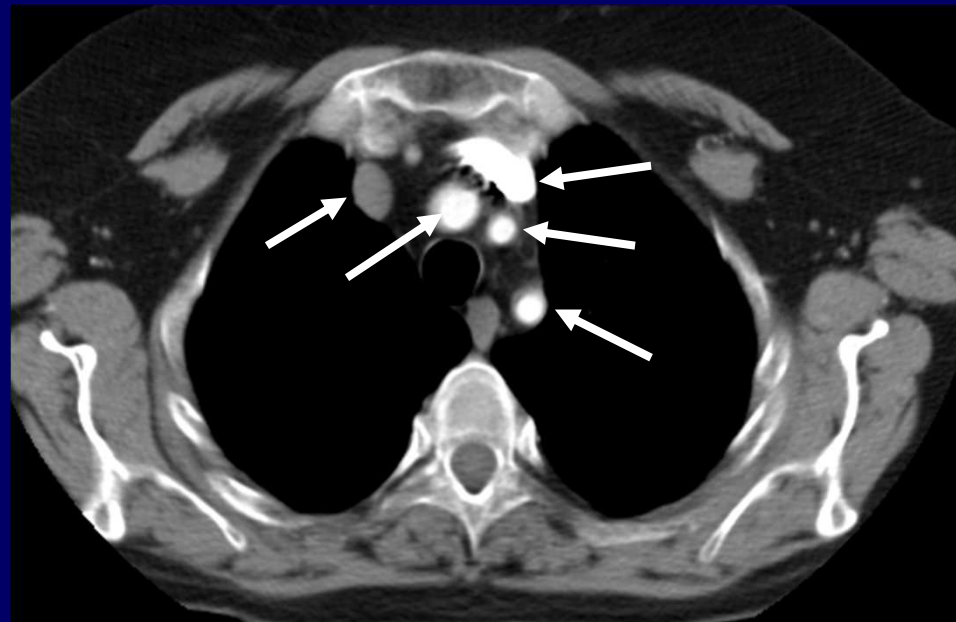
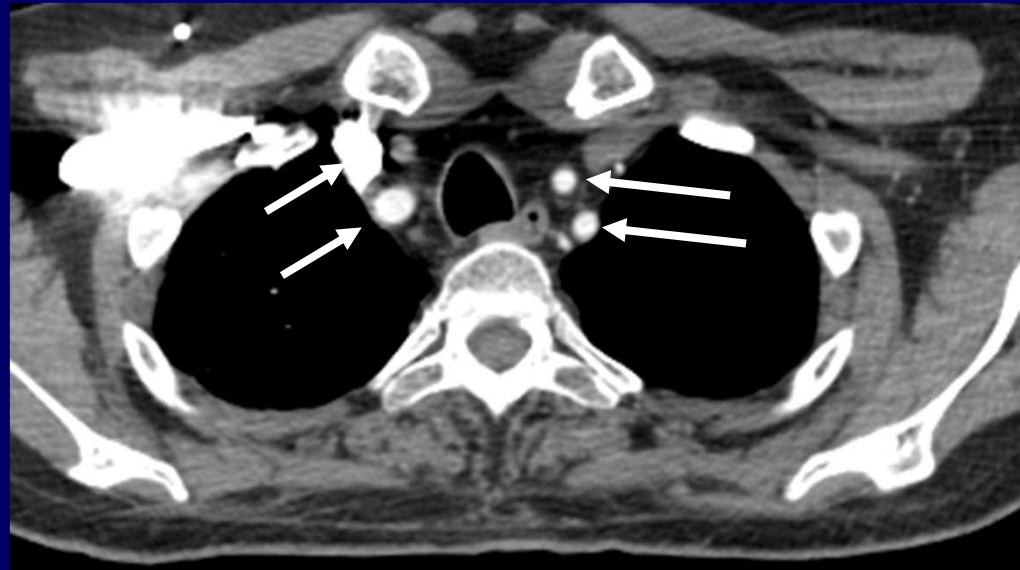


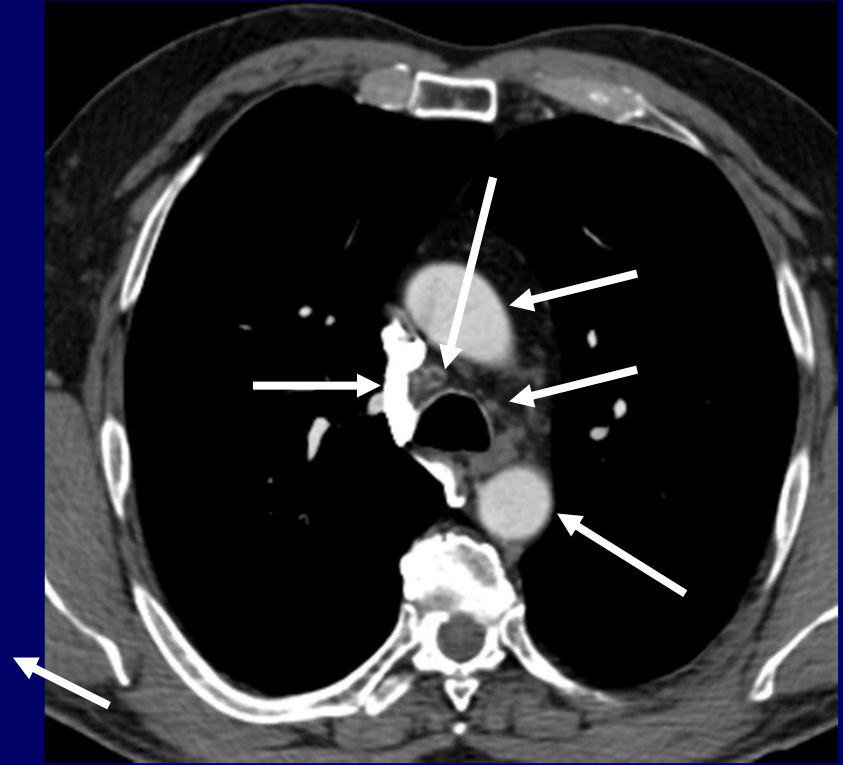
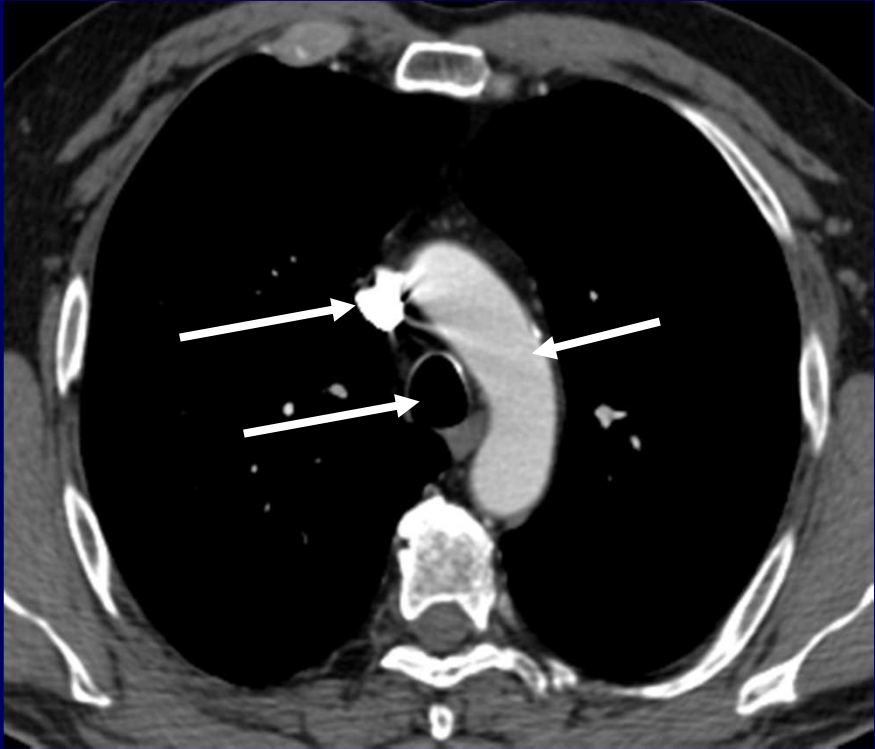
VUE ANT

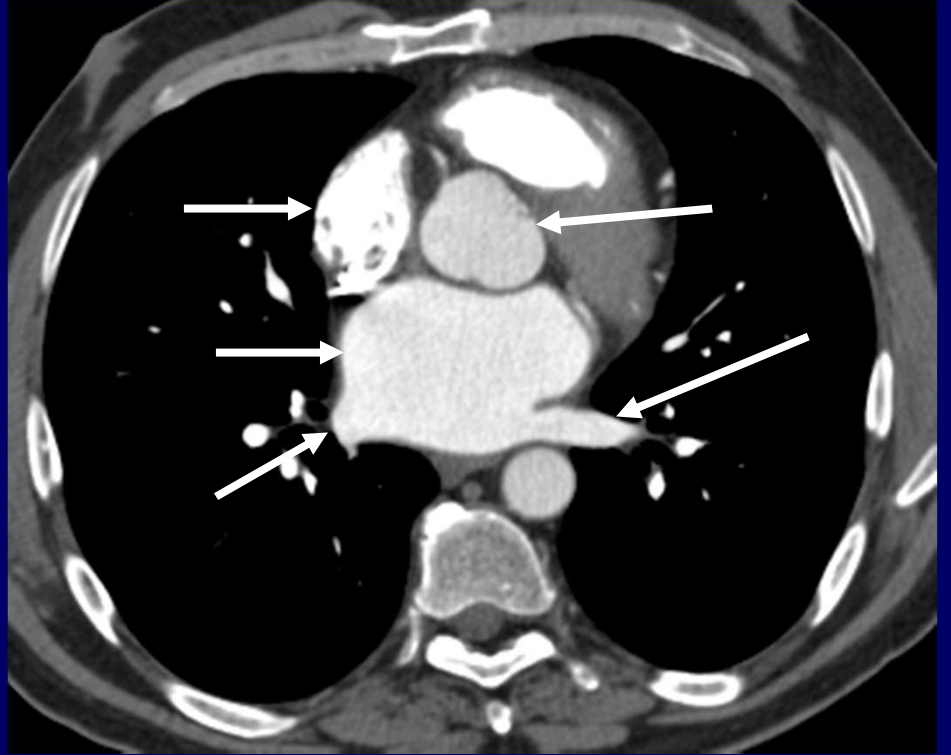
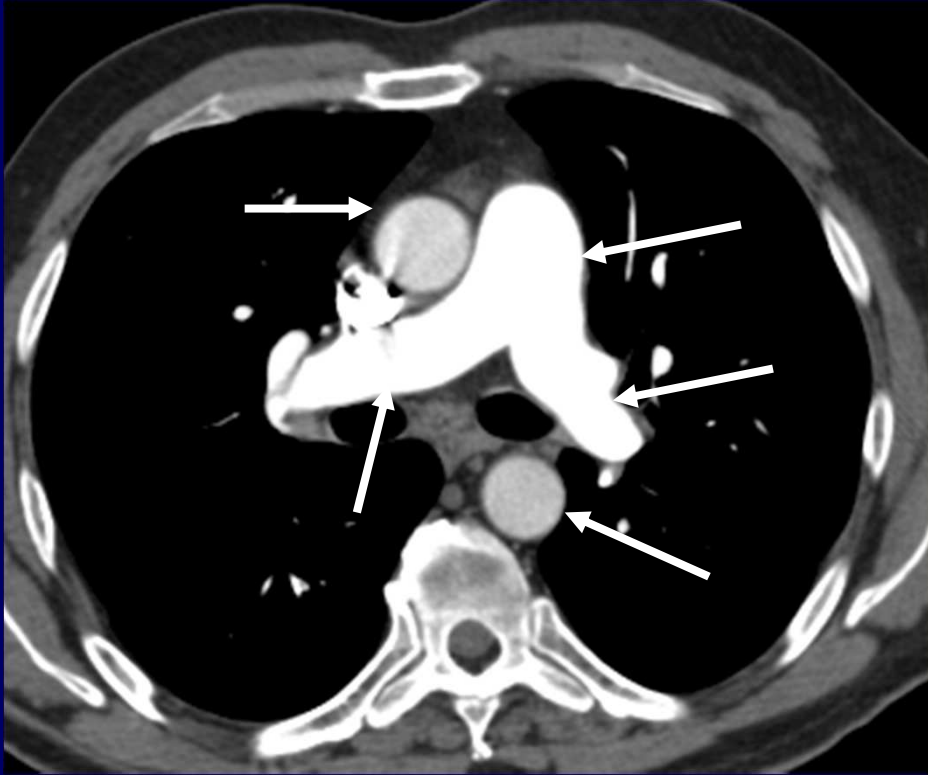


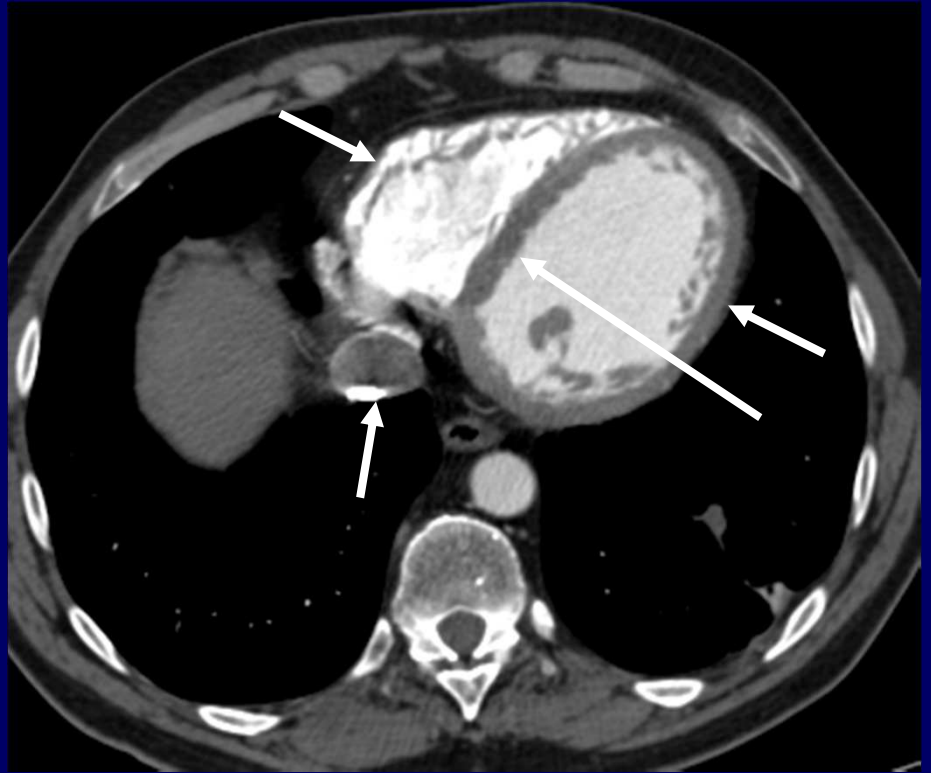
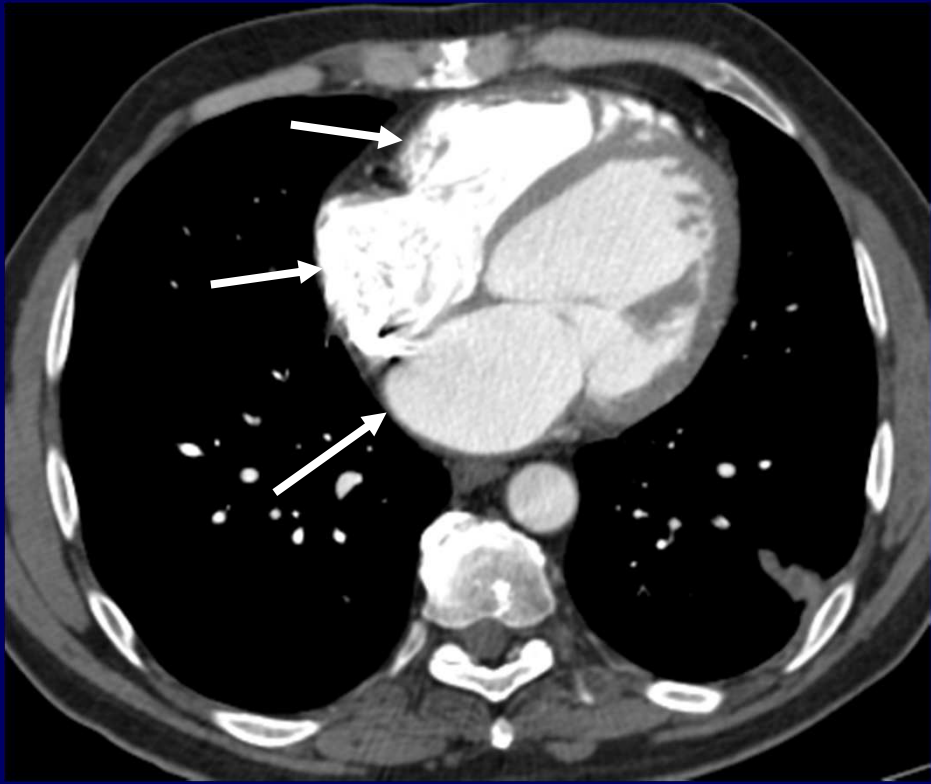


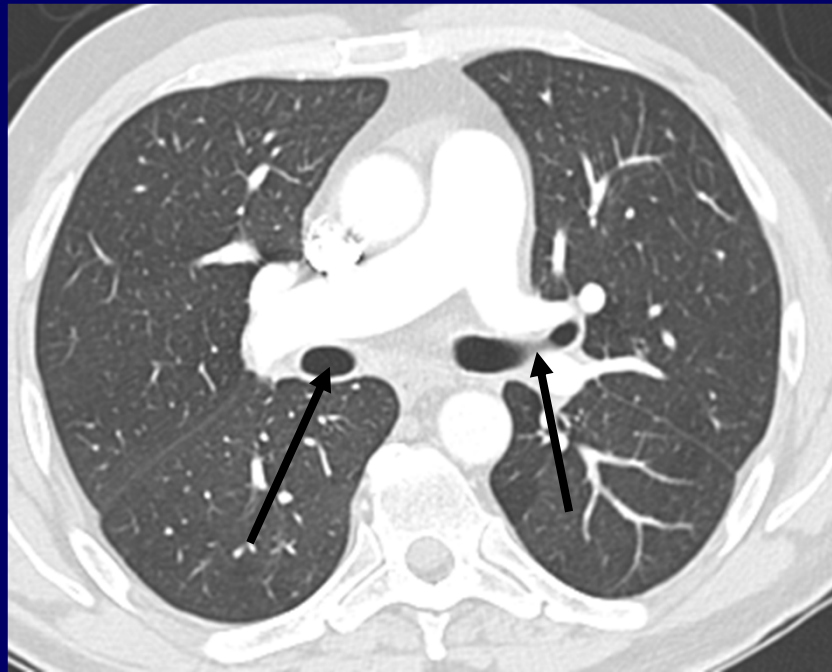
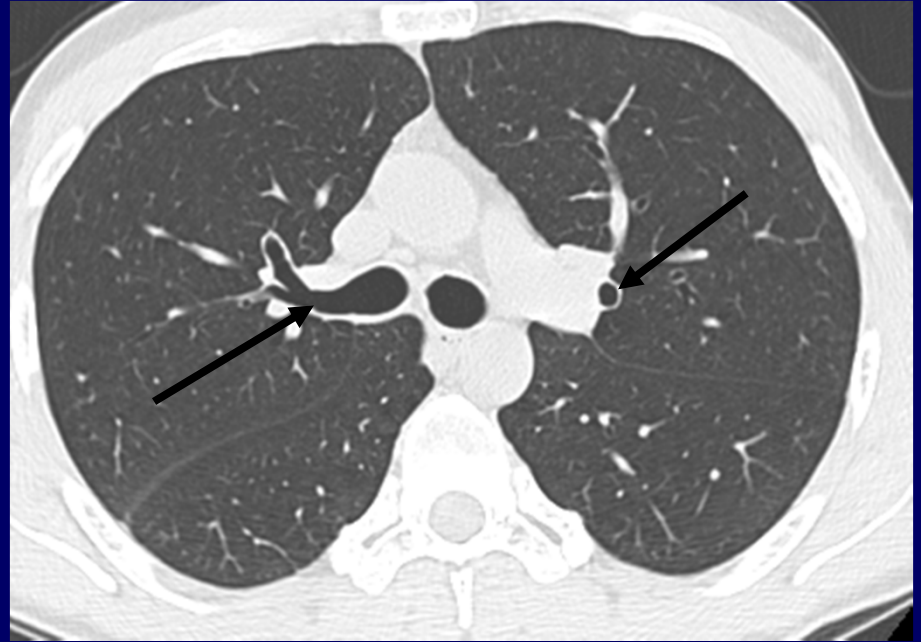
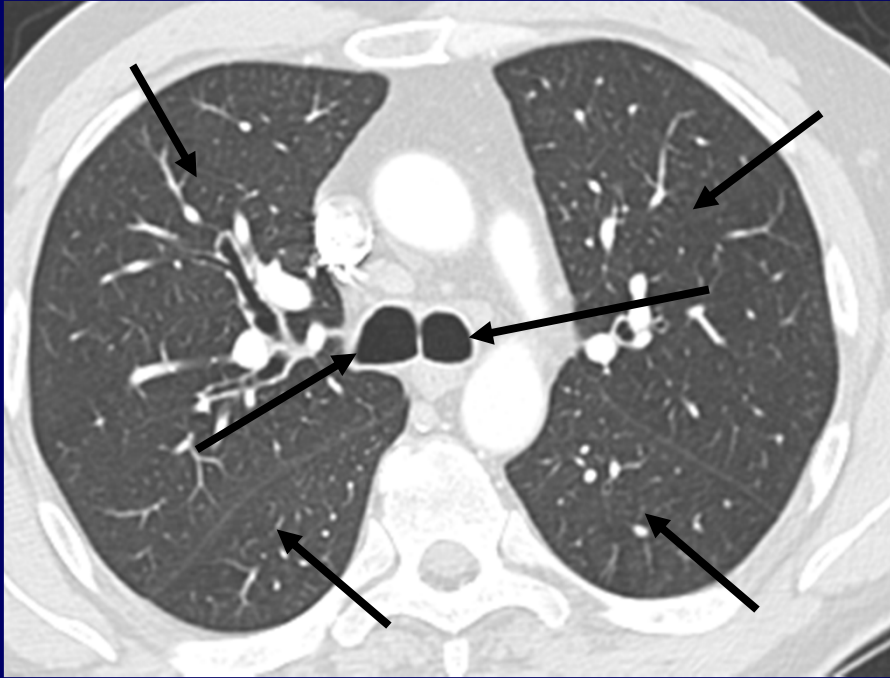
Quelques exercices

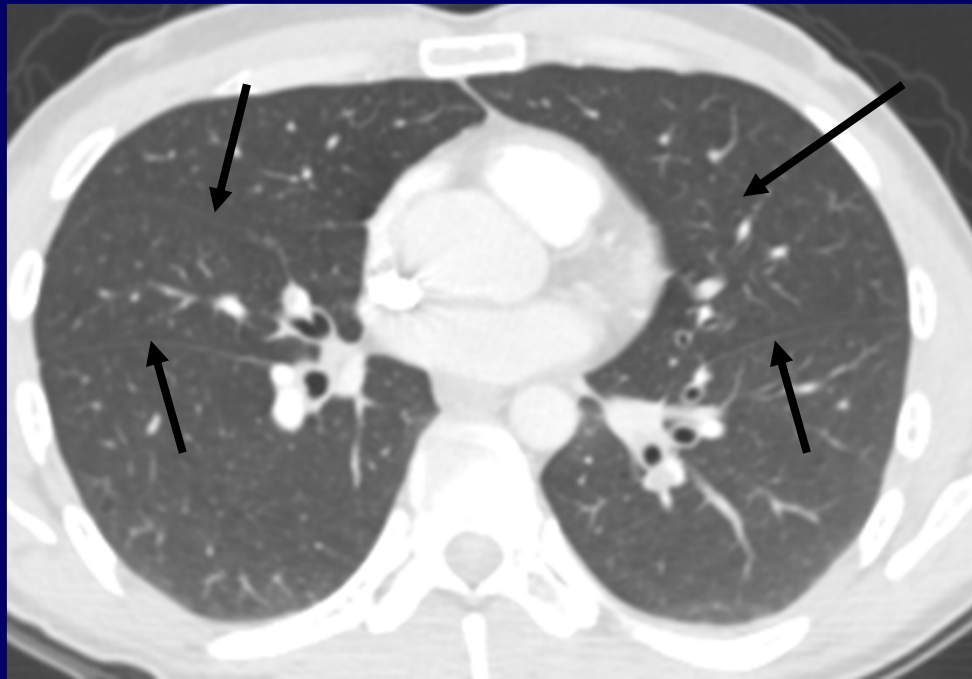
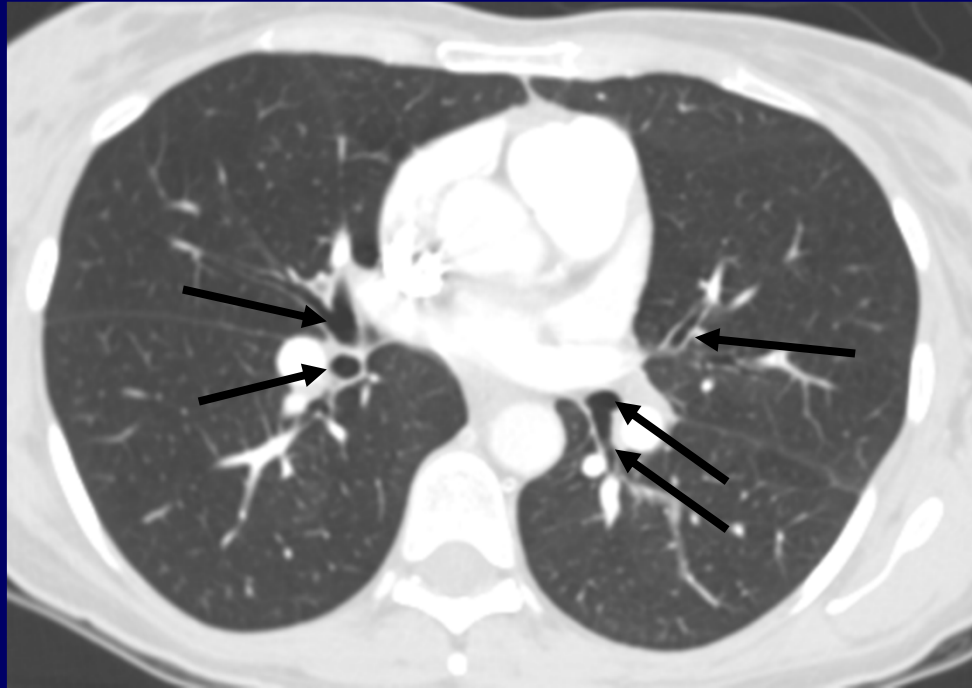






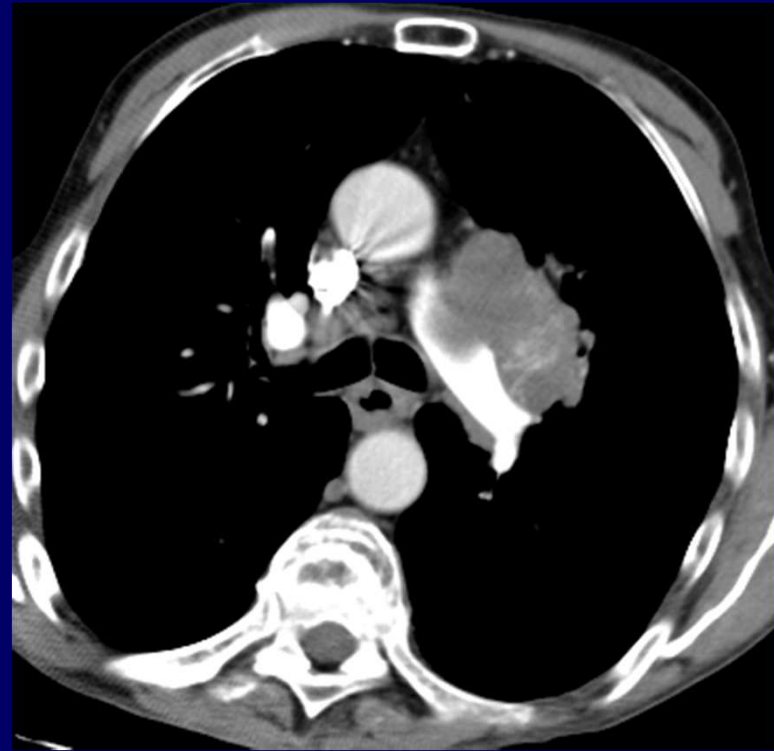


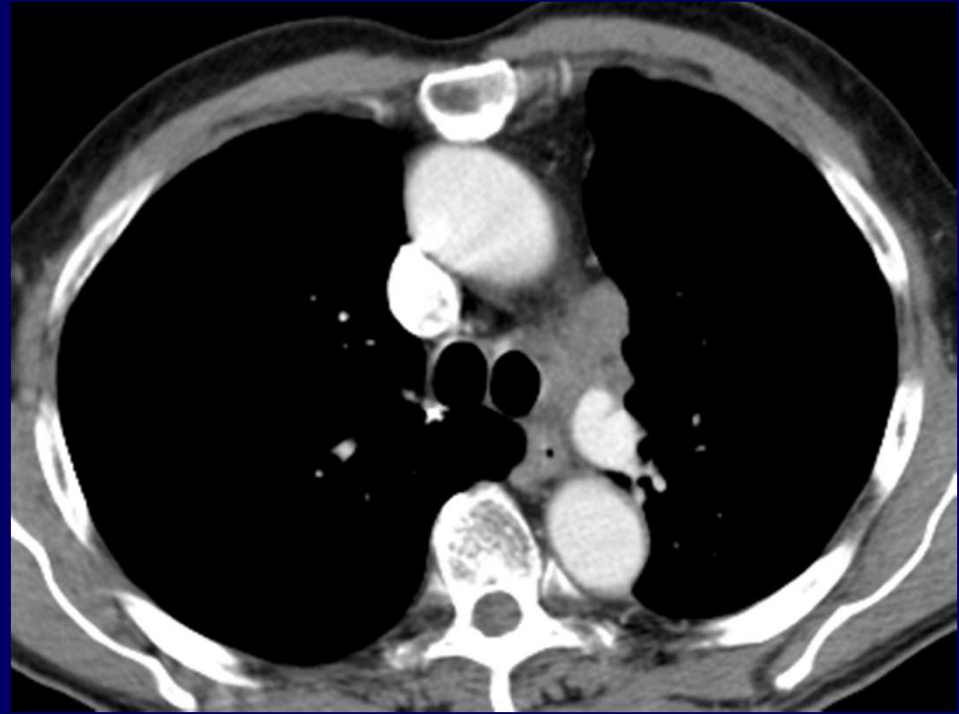
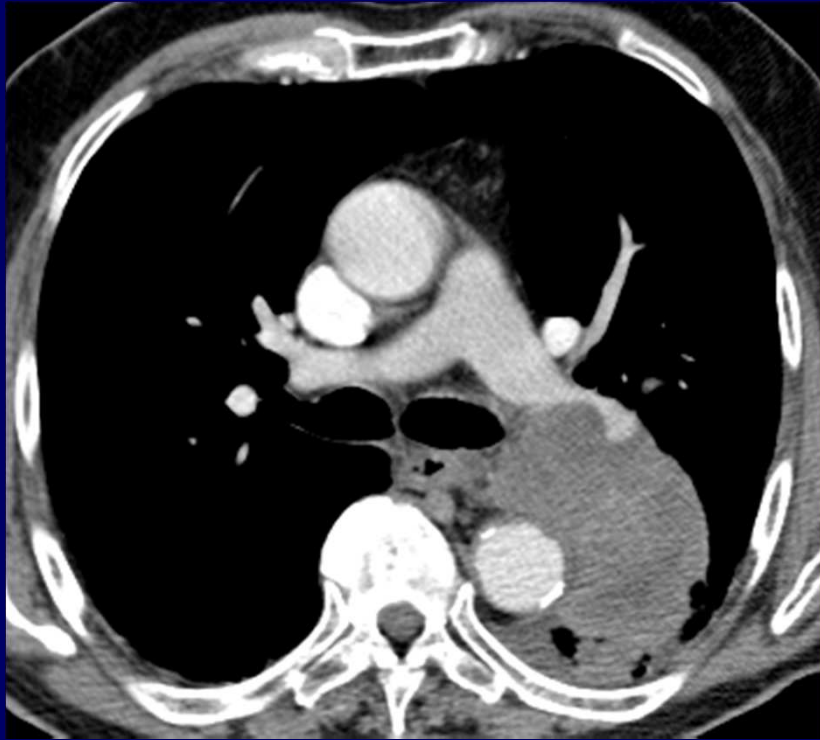


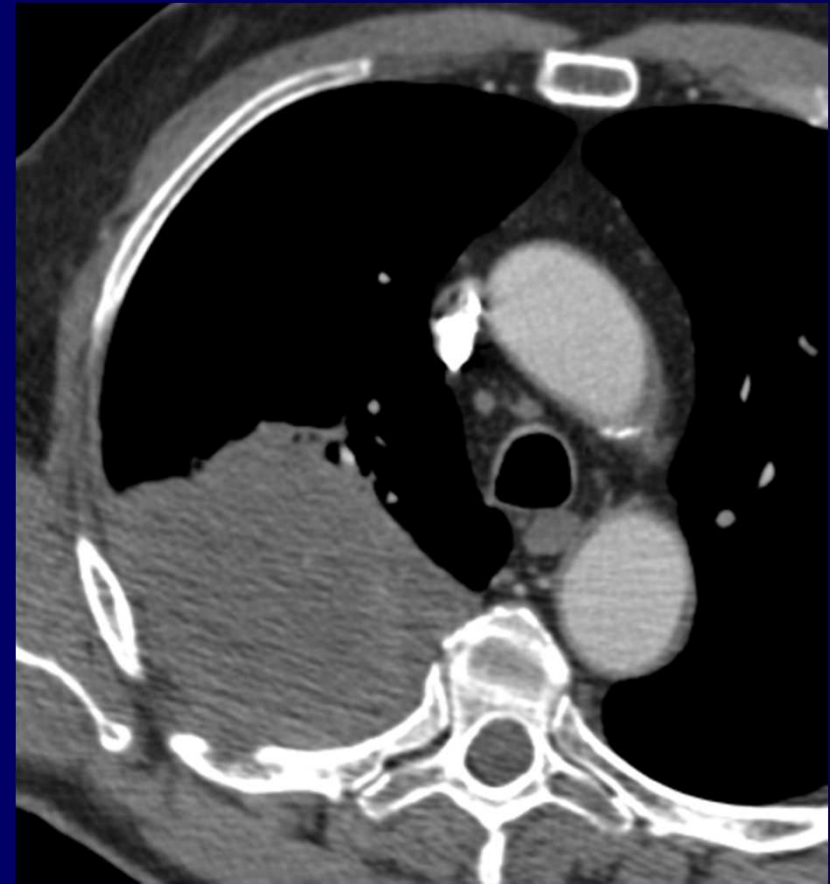
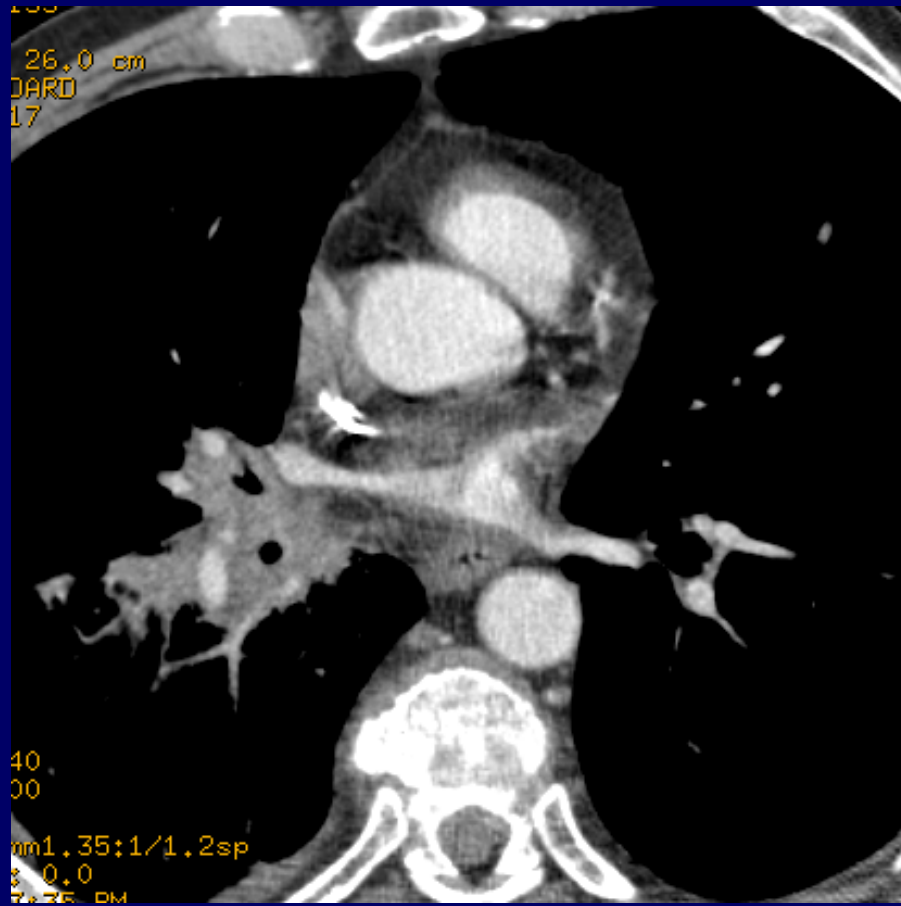


Applications pathologiques

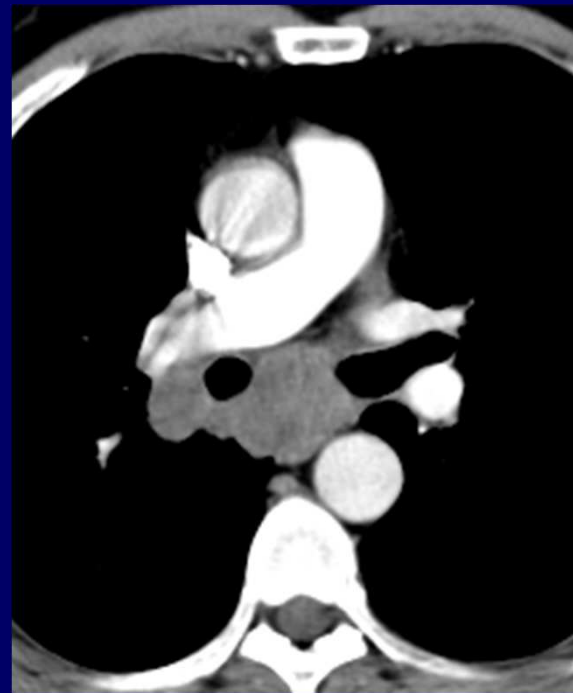
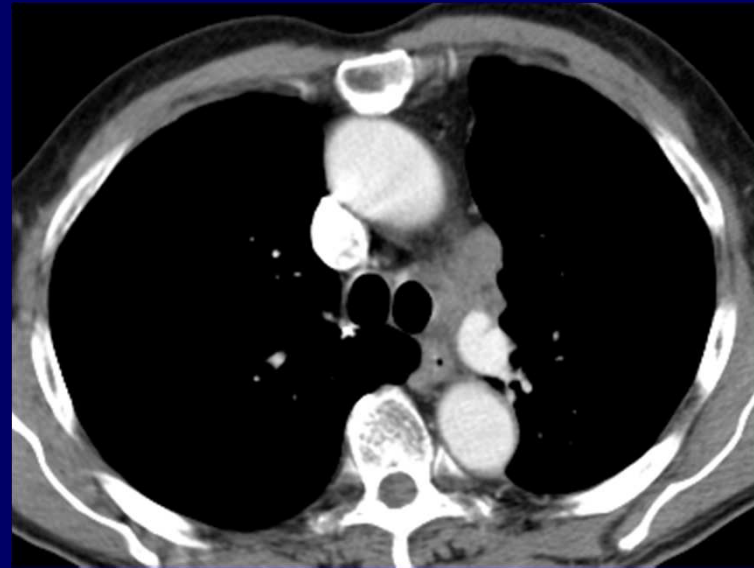
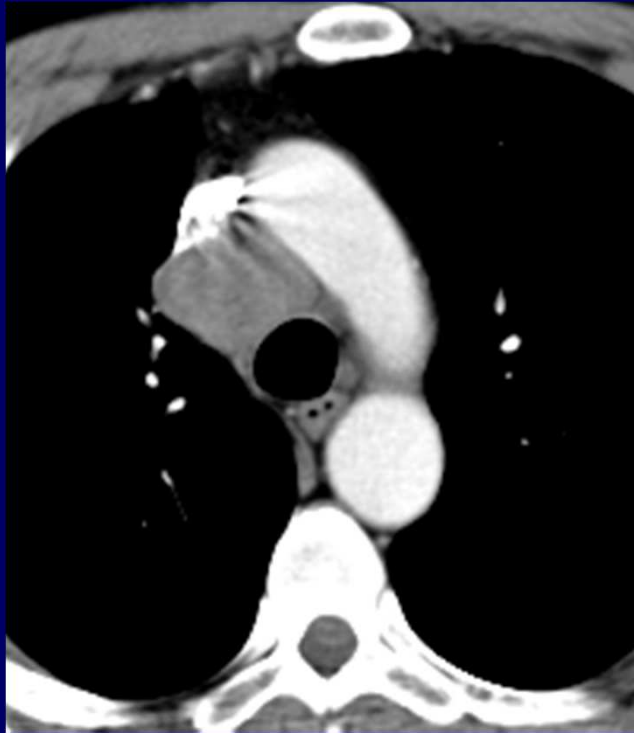
- Cancer bronchique: localisation et extension



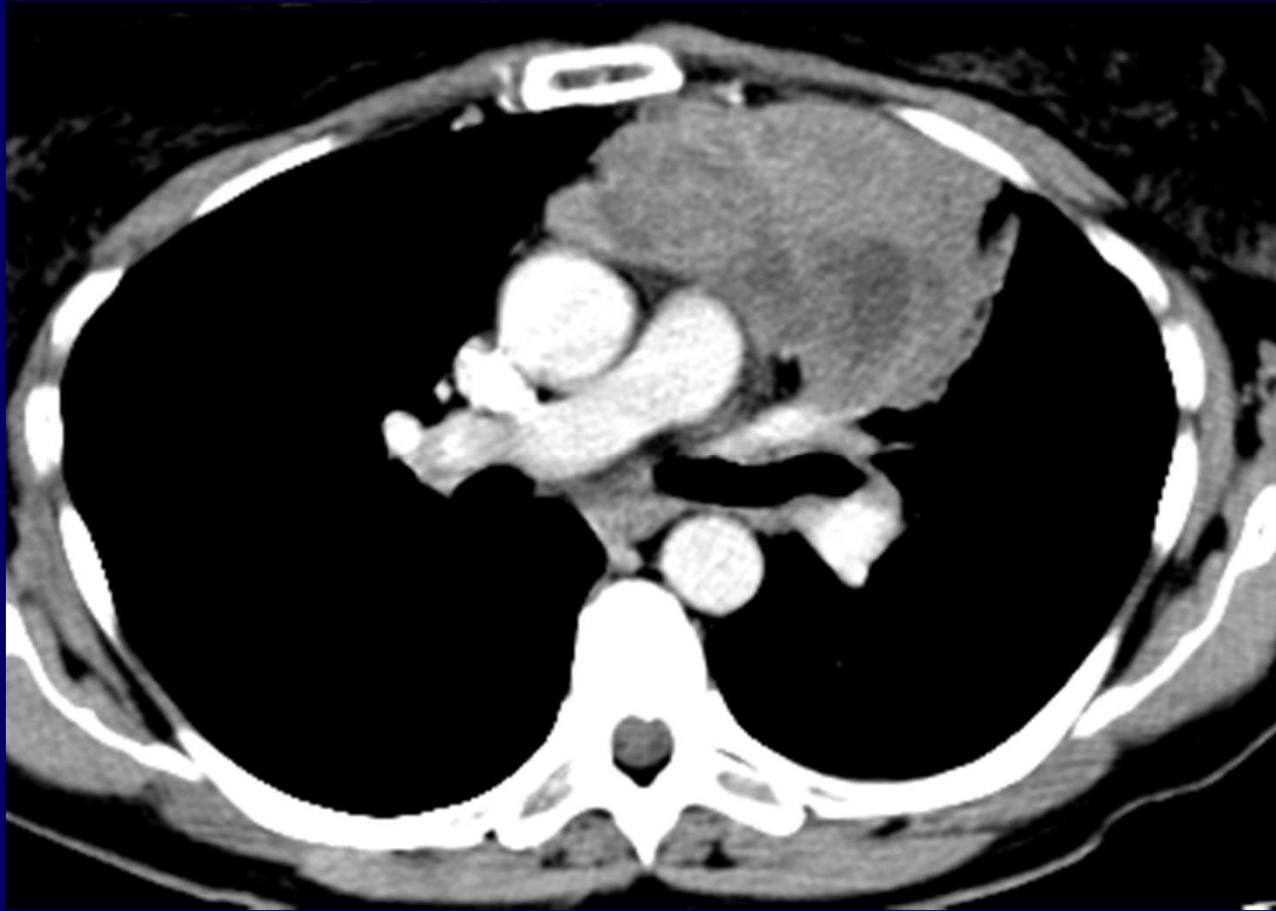


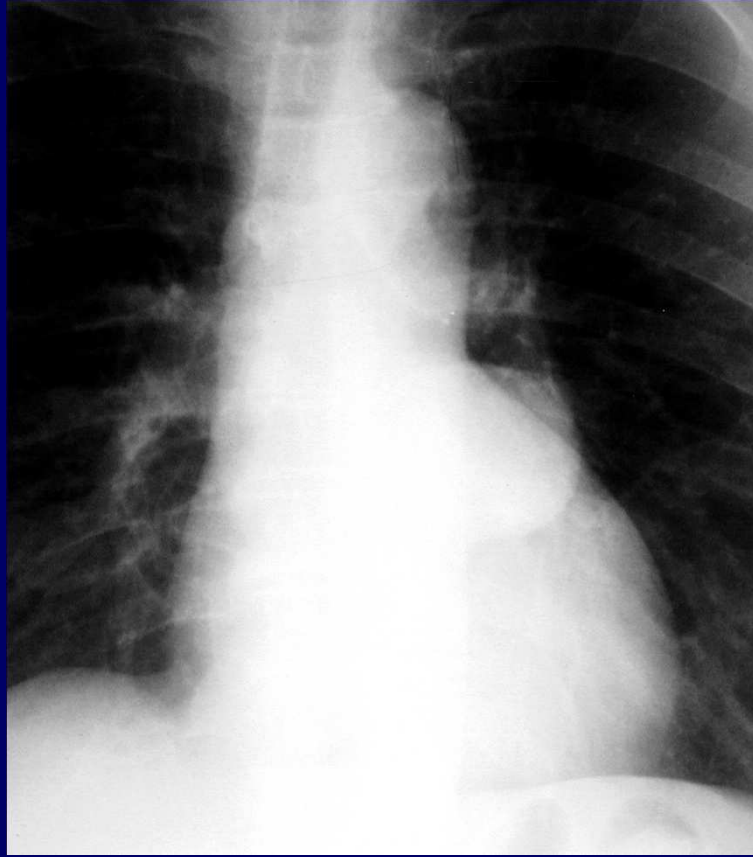


Adénopathies

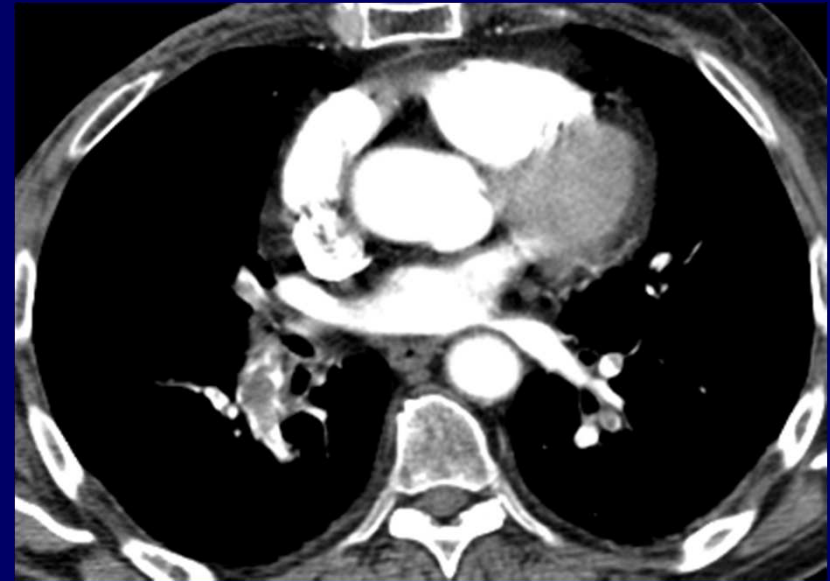


- Médiastin





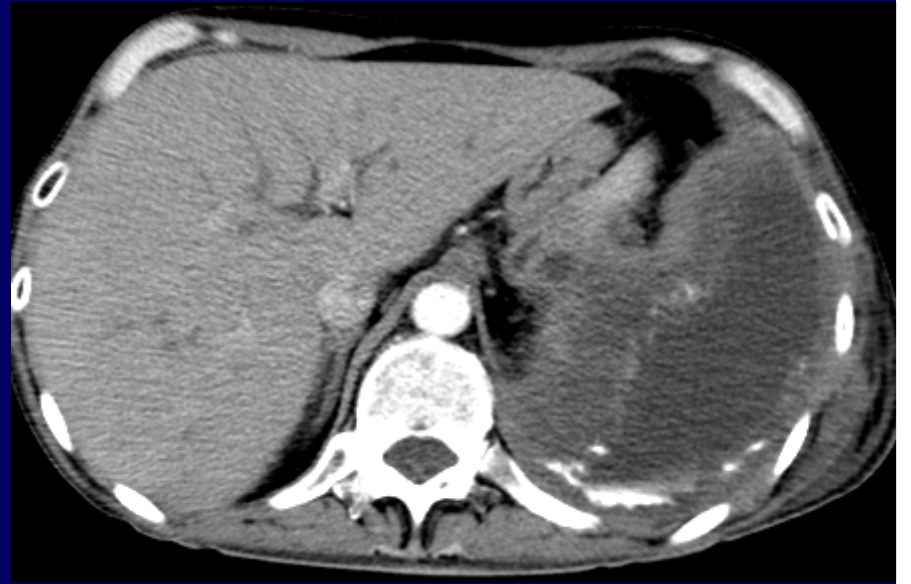
- Vaisseaux pulmonaires



- Paroi thoracique



Plèvre



- Trachée- bronches



