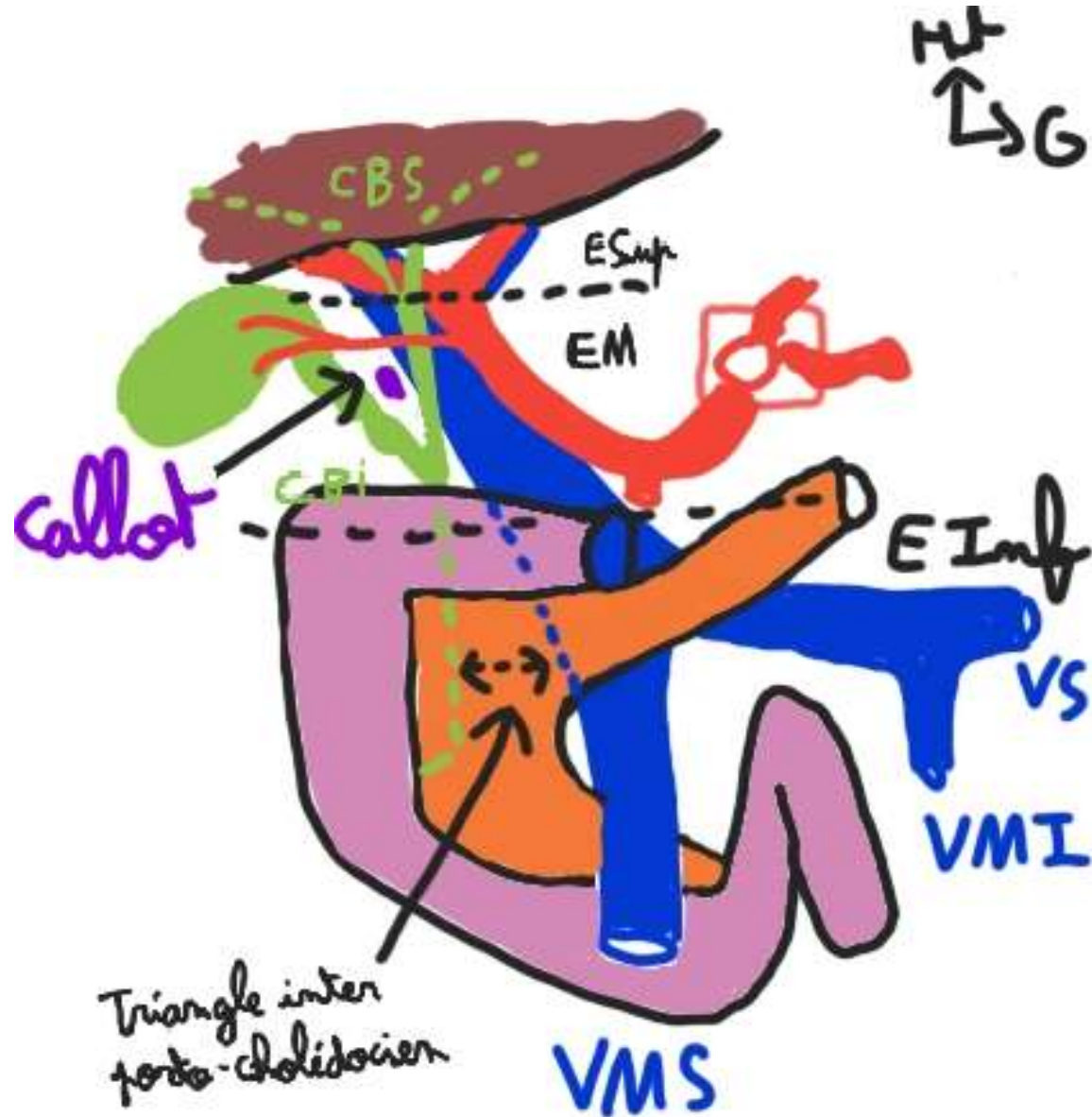
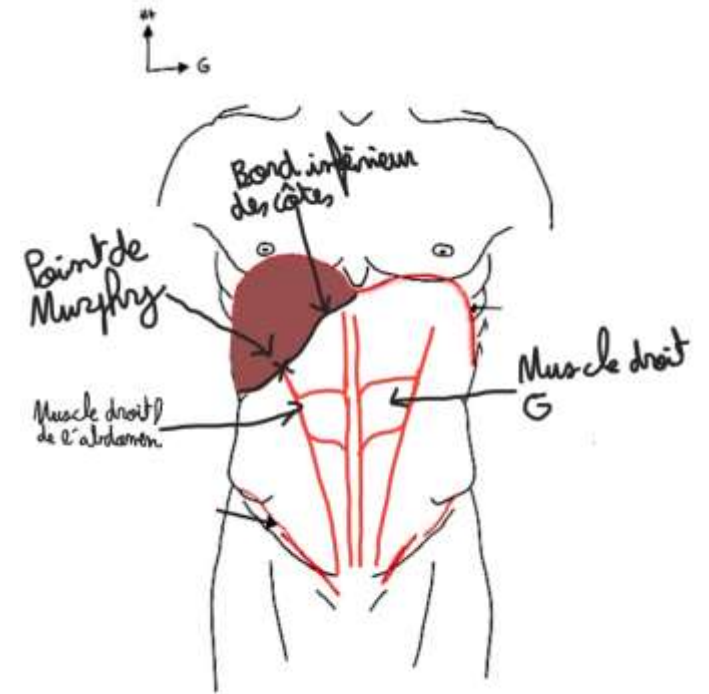


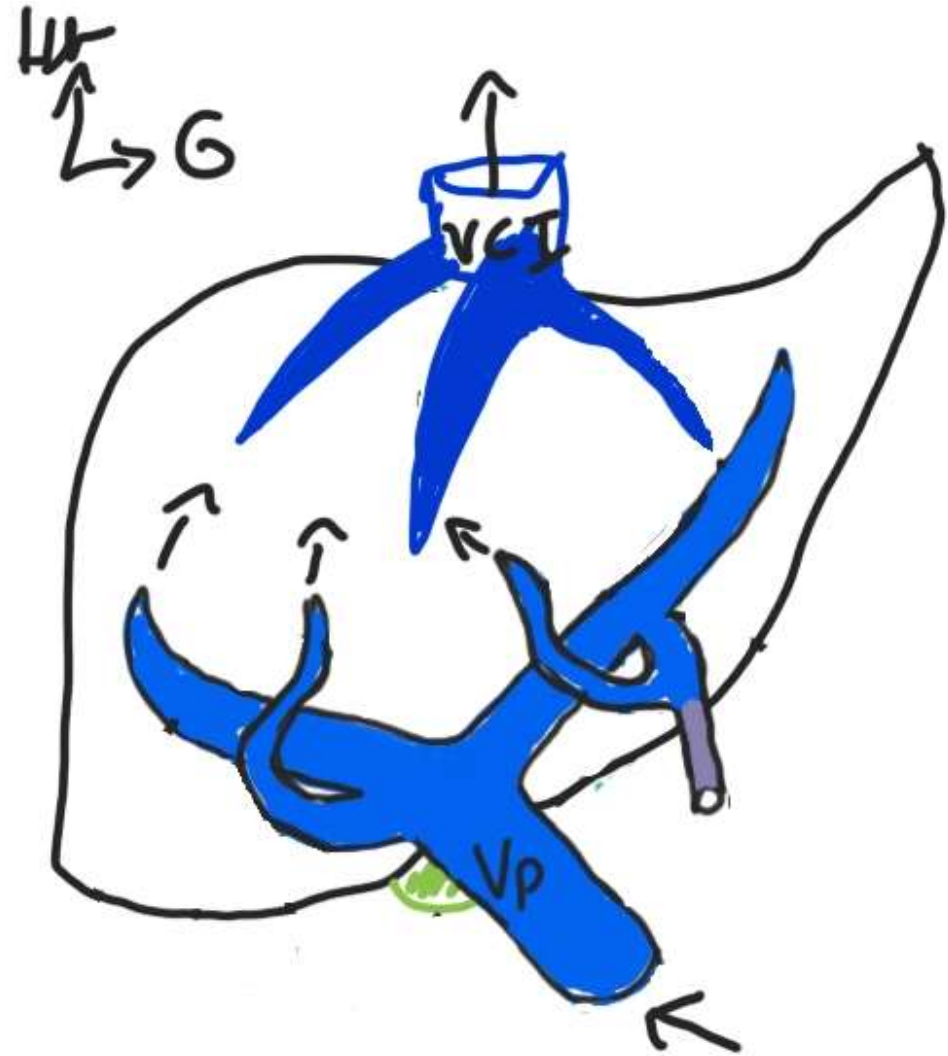
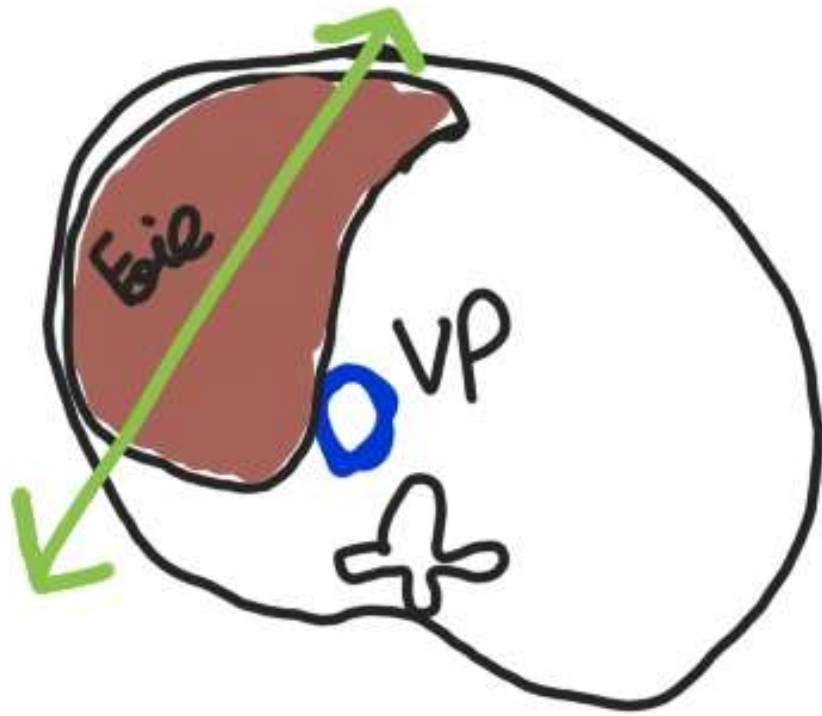
# VI. Hile hépatique :

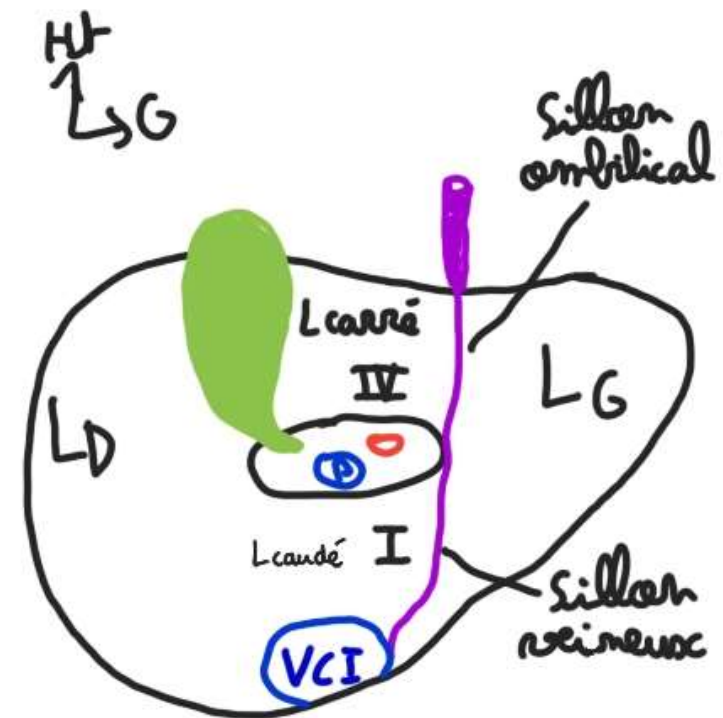
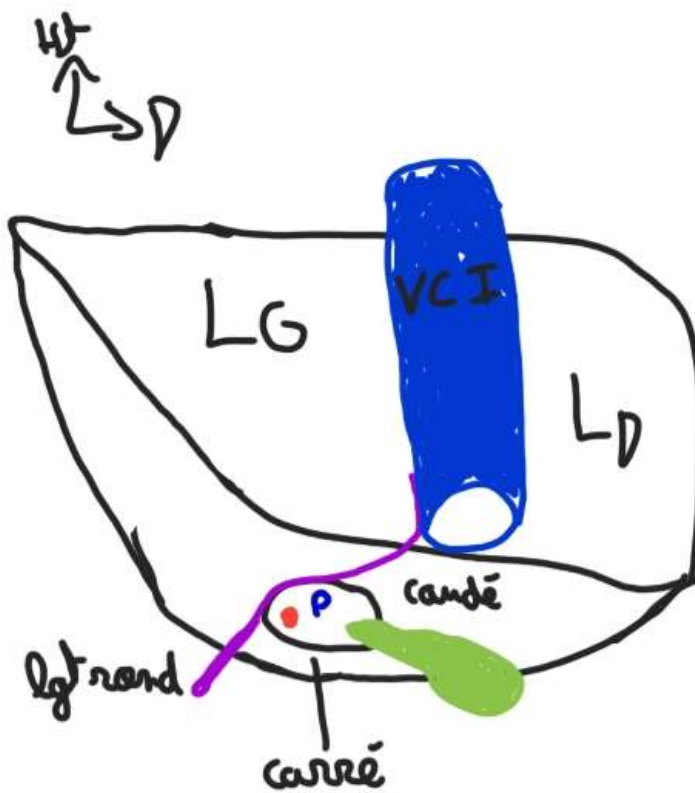
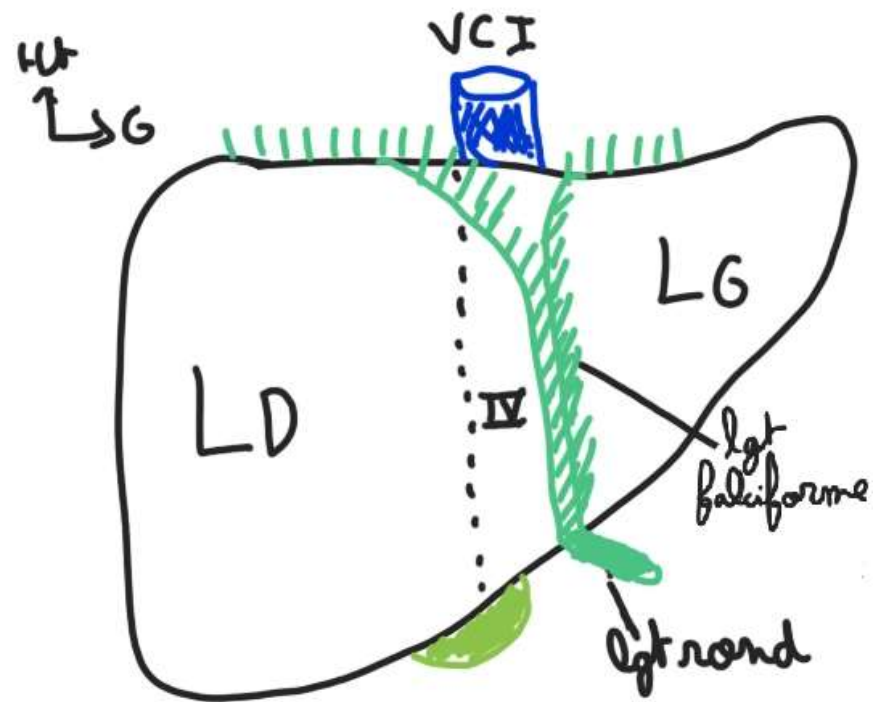


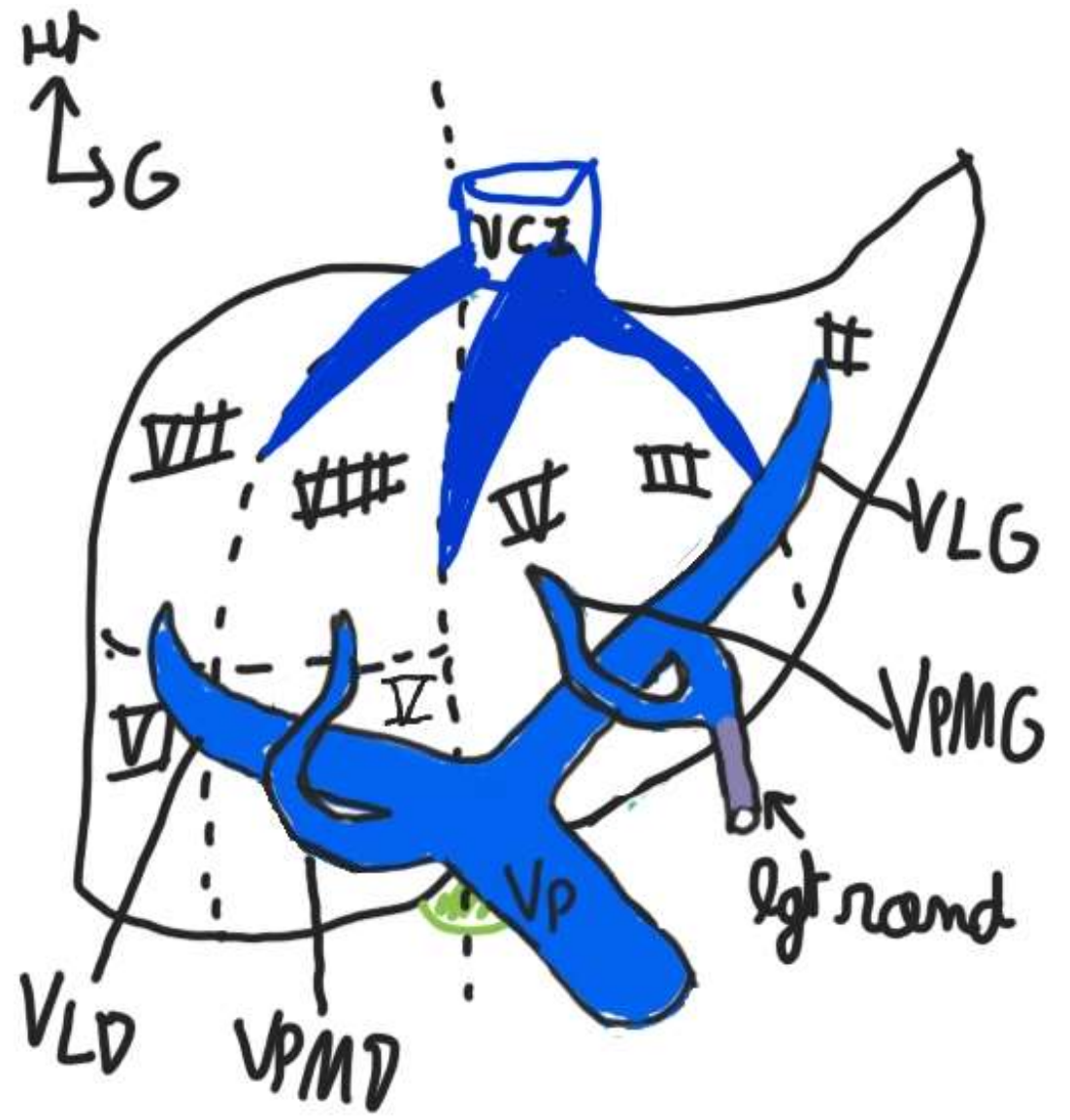
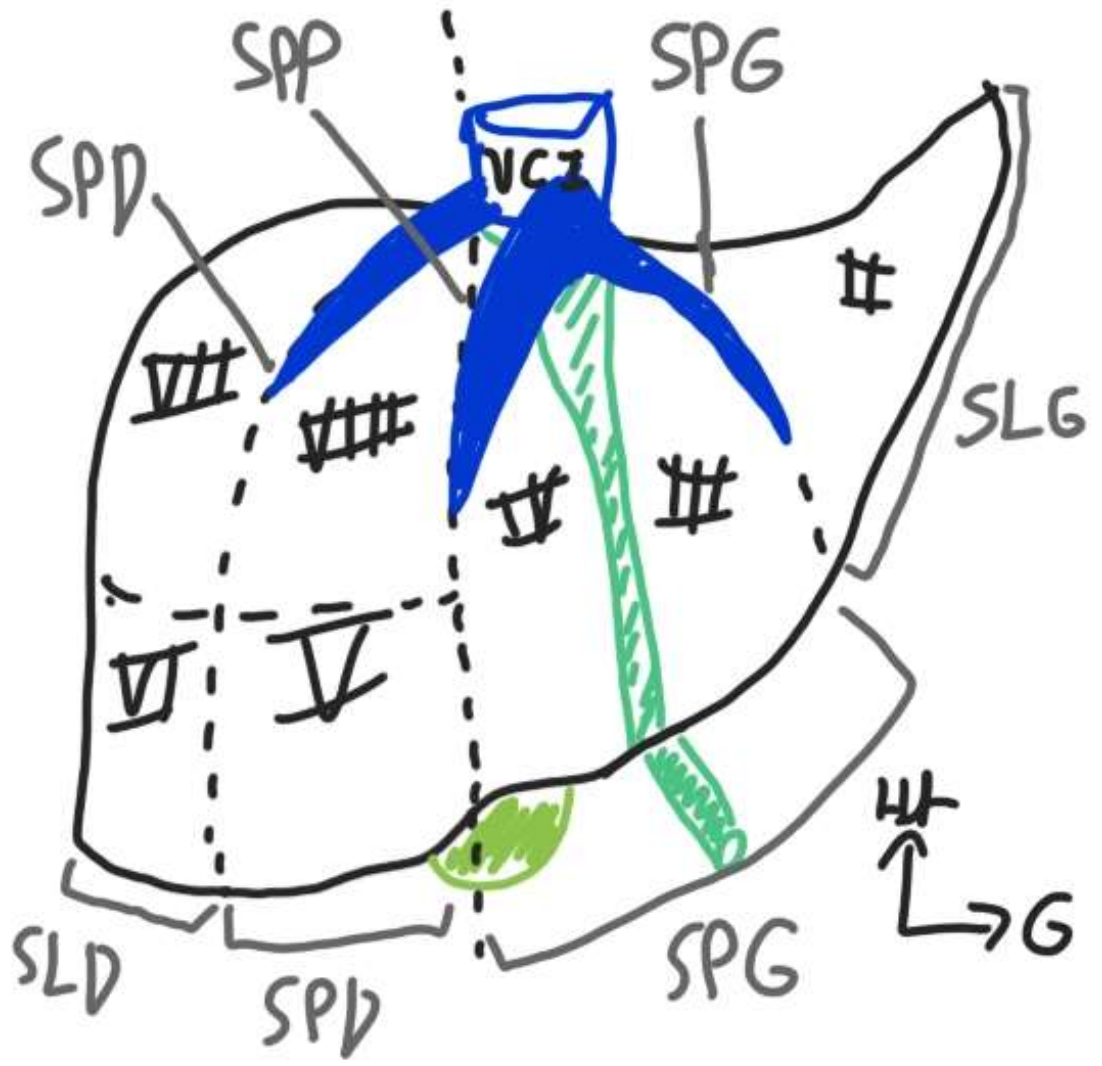
\* A. Gastrique  
Droite et pas  
Gauche !

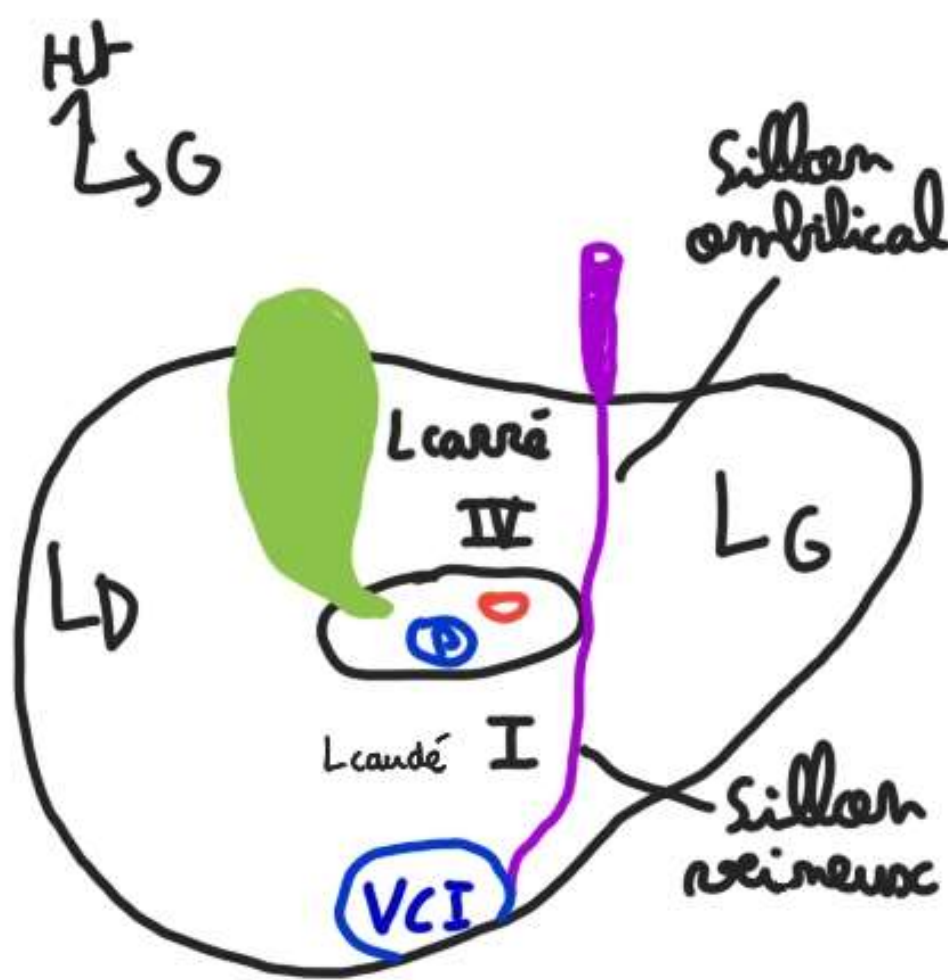
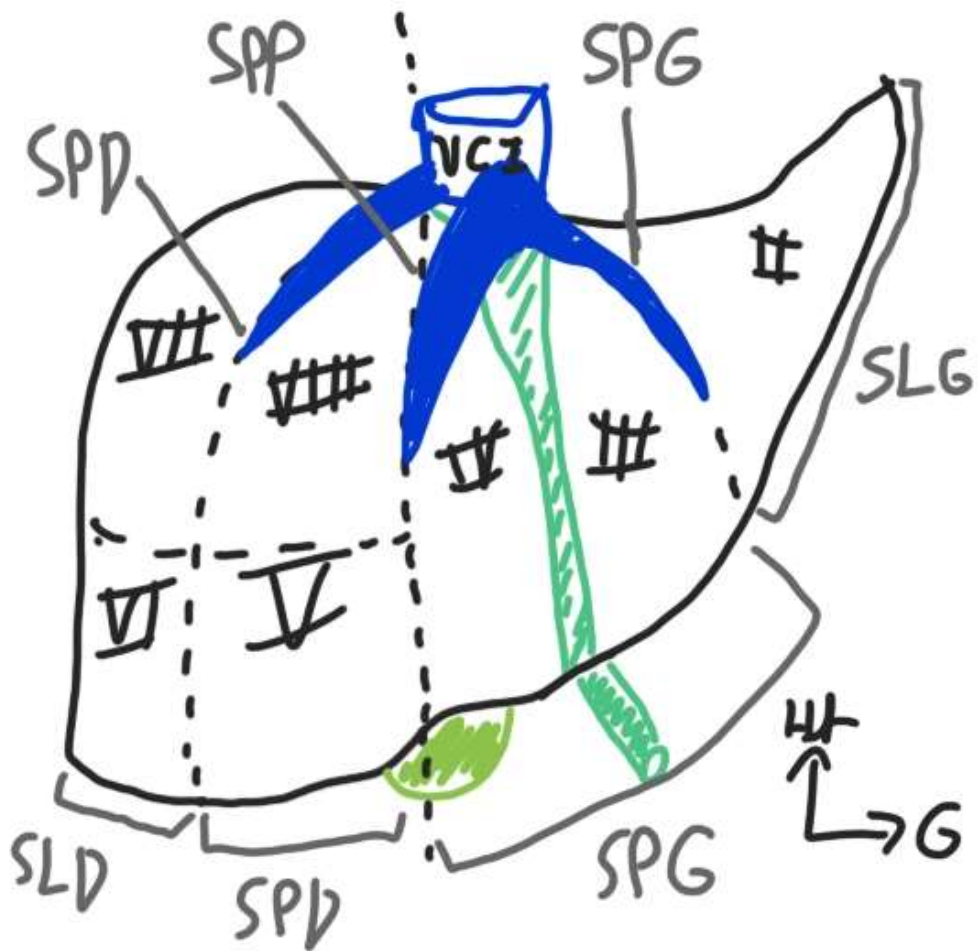


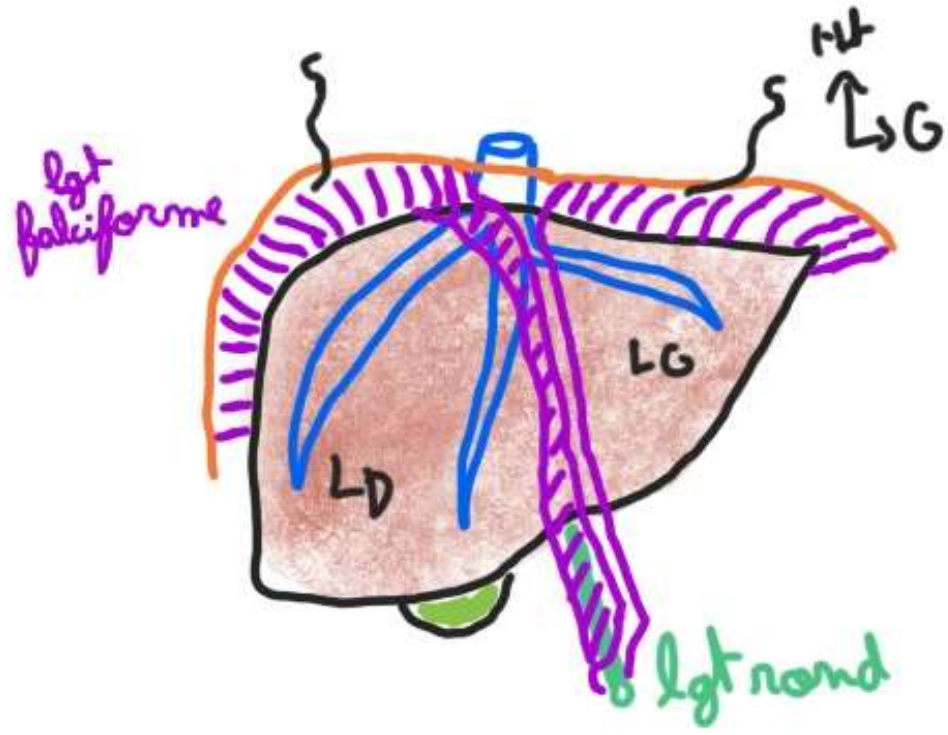
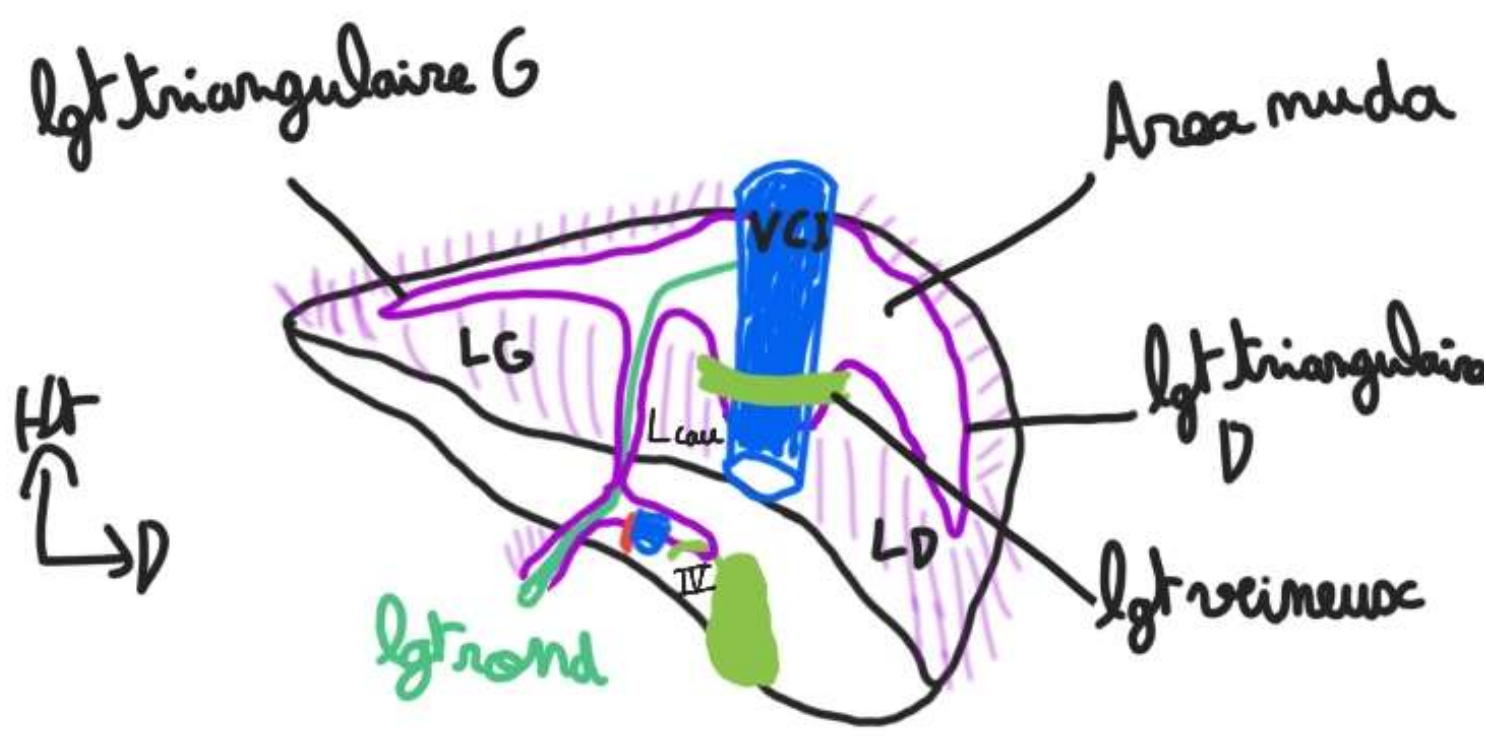
# VII. Foie :



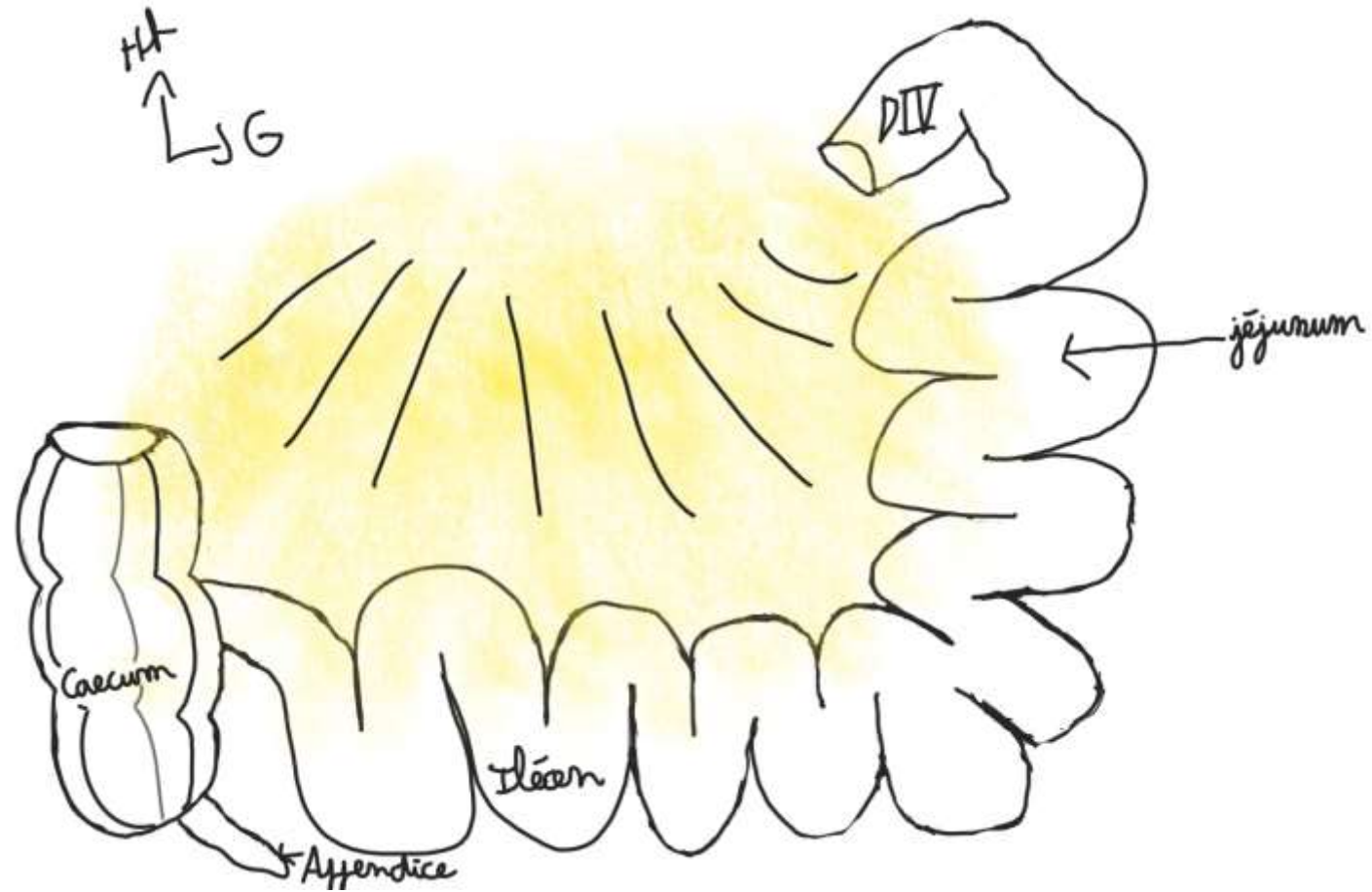


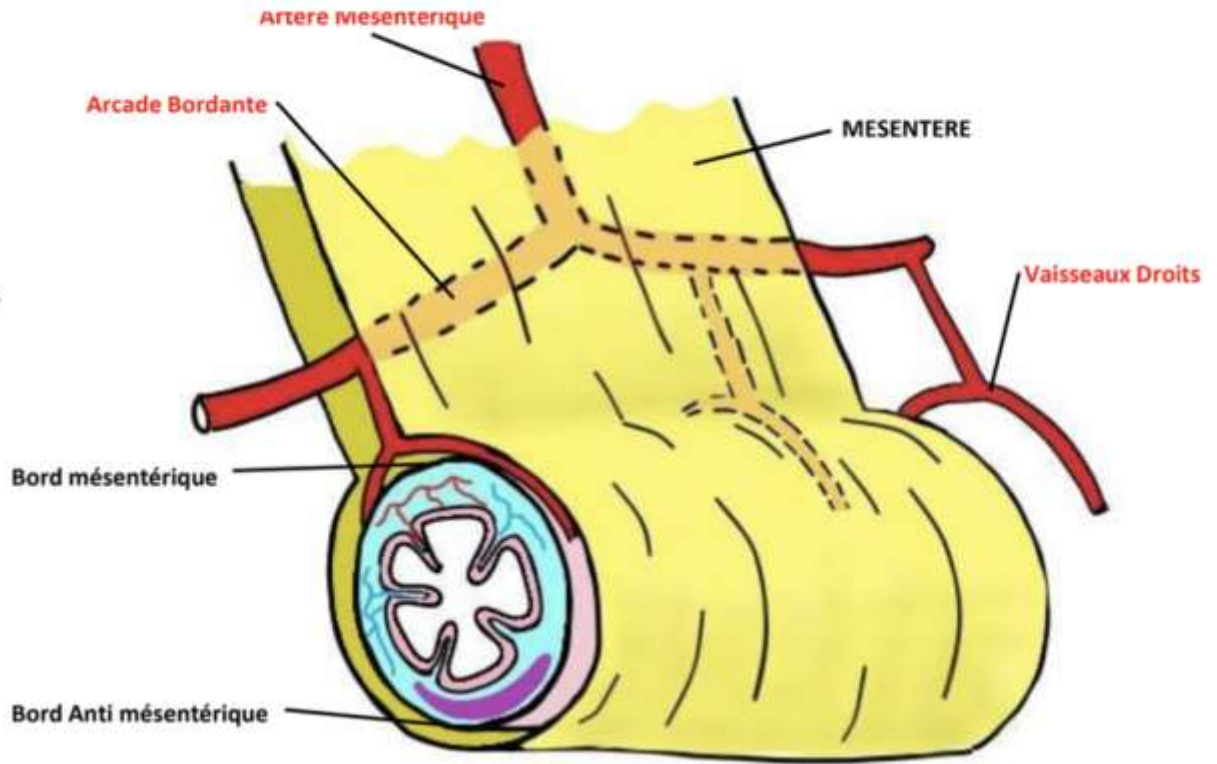
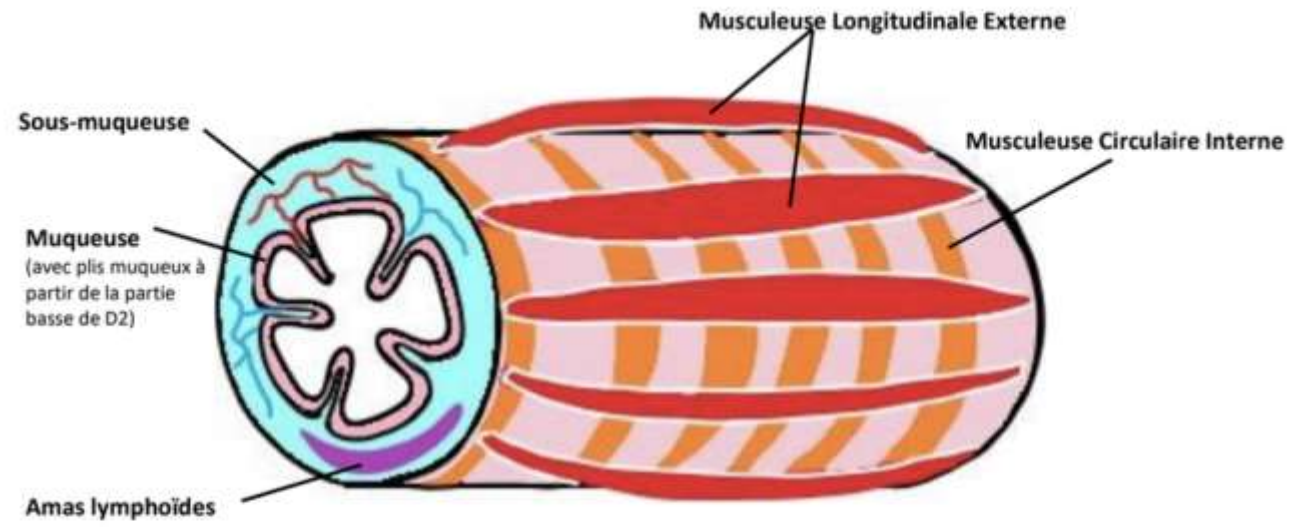


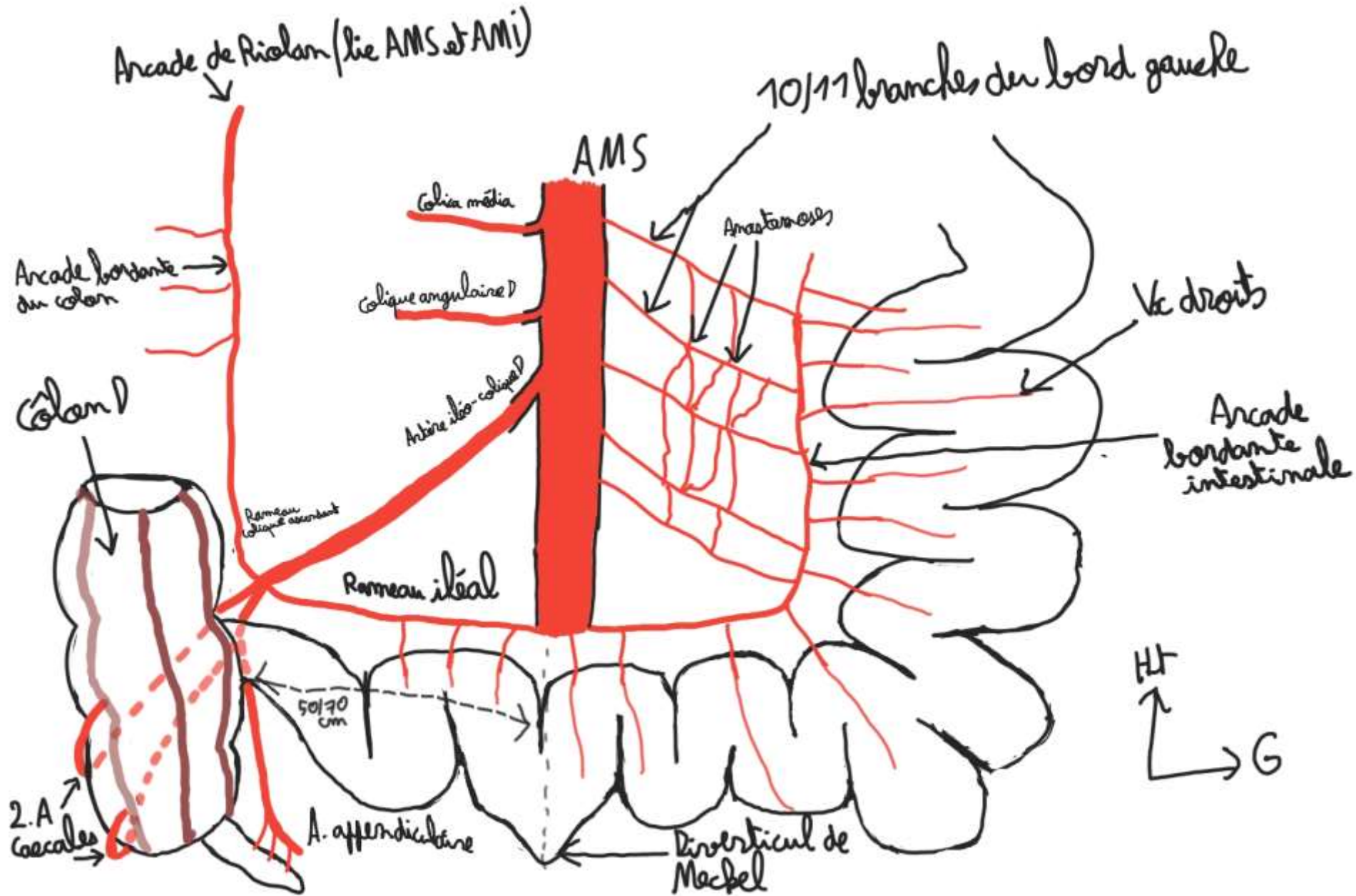




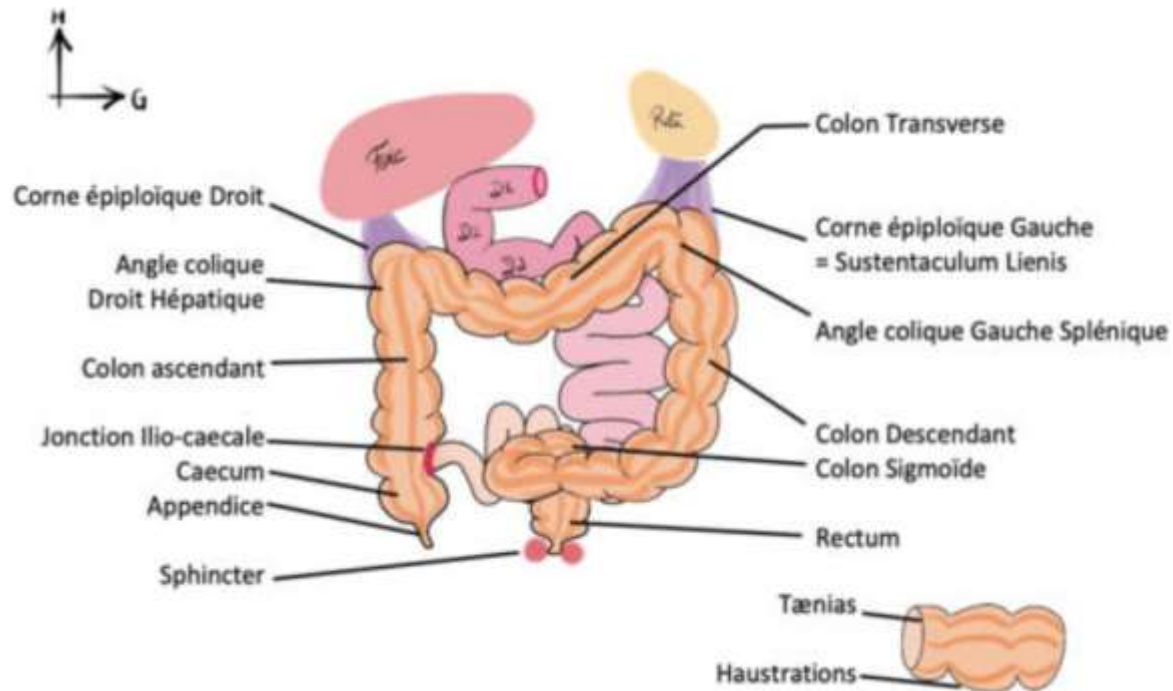
# VIII. Intestin grêle :



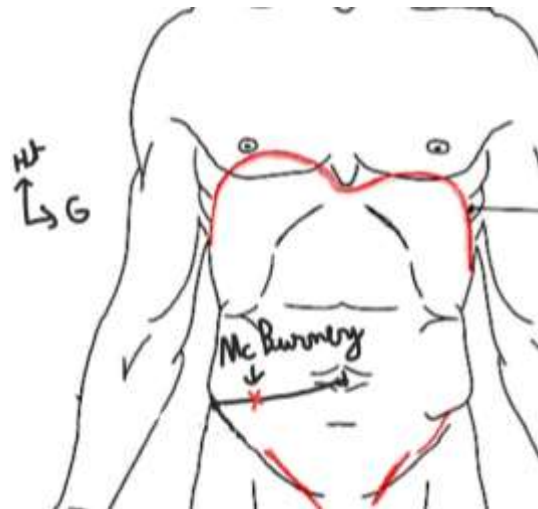




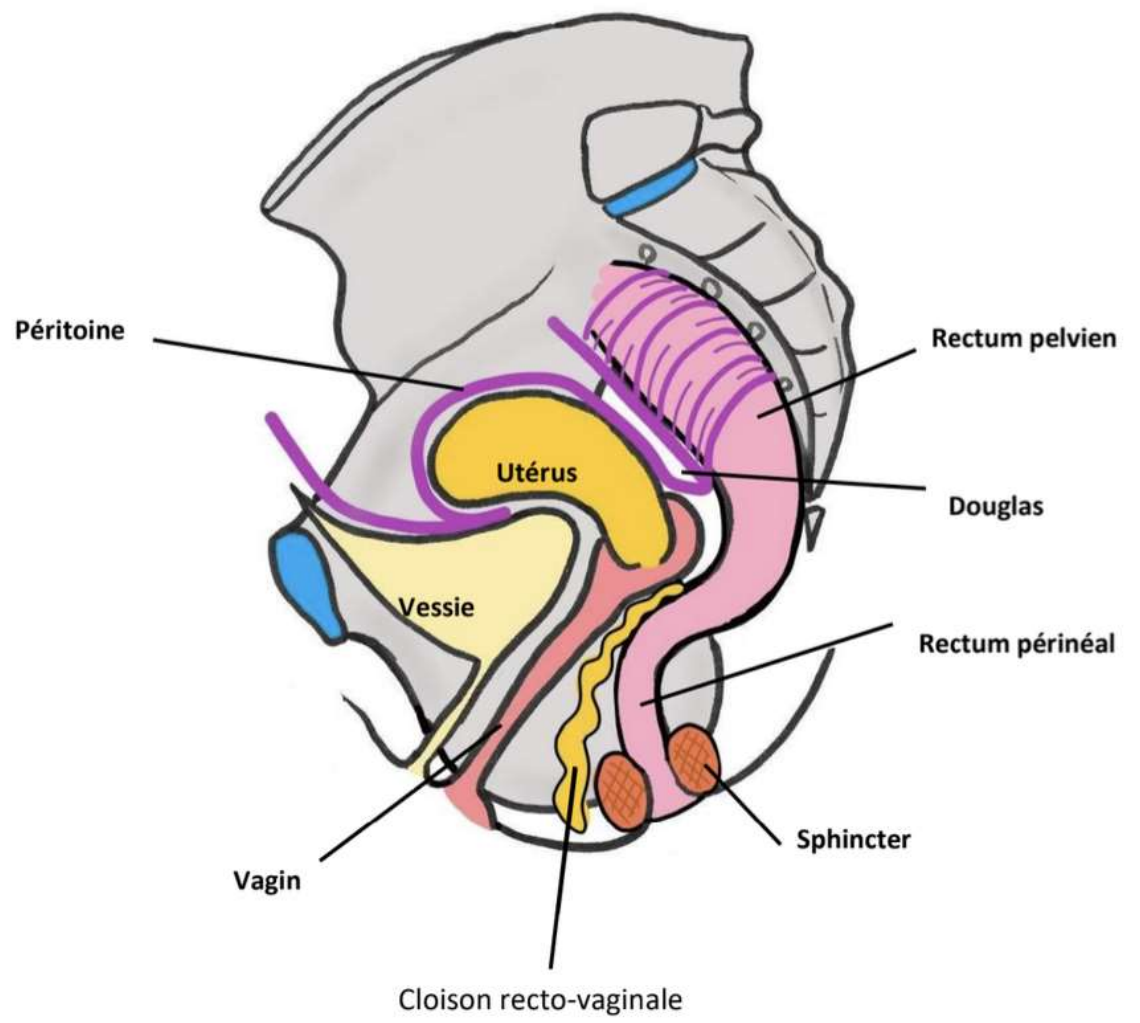
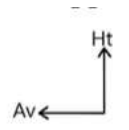
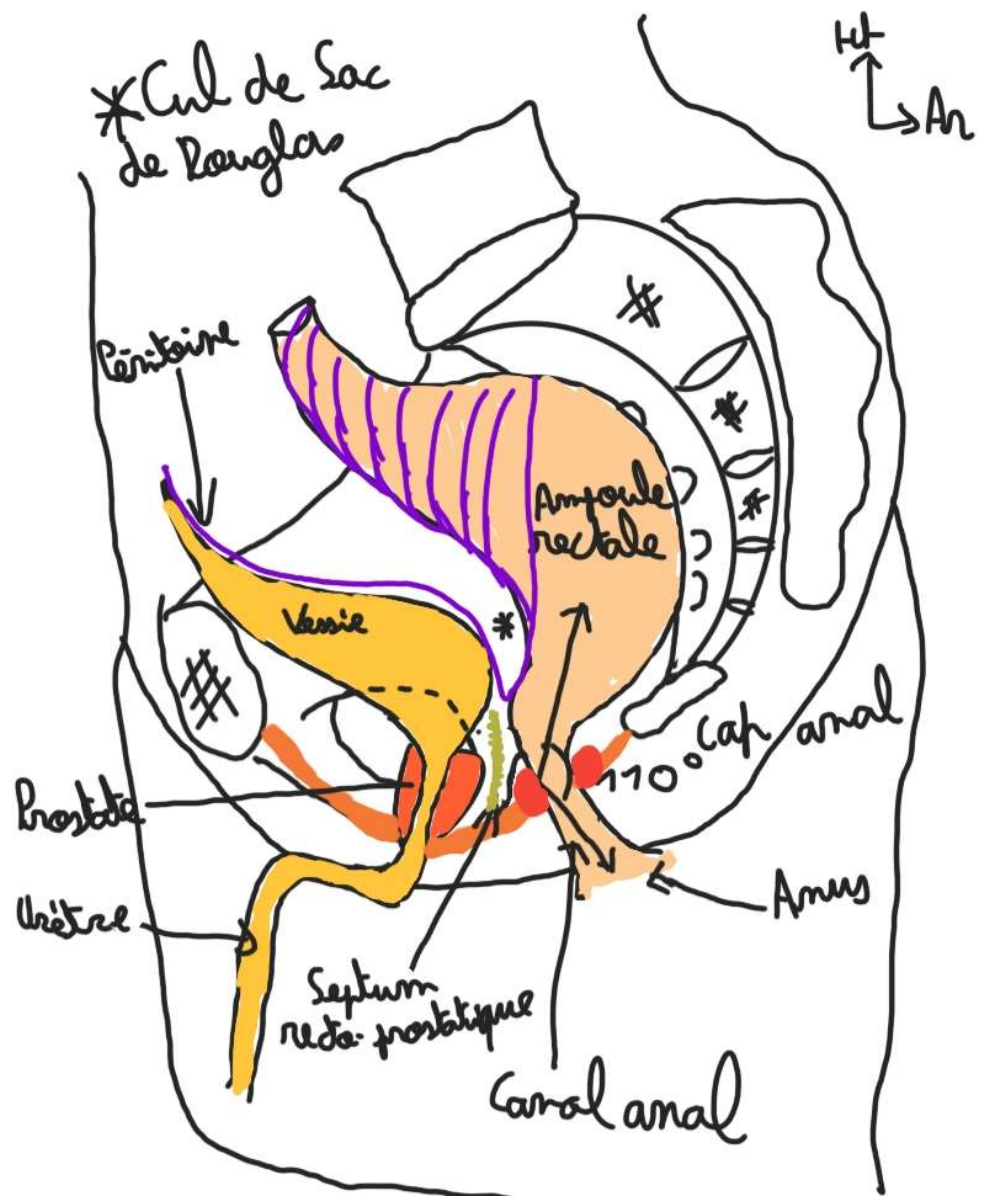
# IX. Côlon :



Organe	Anatomie	Fonction
<b>Intestin grêle</b> = petit intestin	<ul style="list-style-type: none"> <li>➤ <b>Lisse</b></li> <li>➤ <b>Vascularisation</b> très riche</li> <li>➤ <b>En 3 parties :</b> <ol style="list-style-type: none"> <li>1. Duodénum</li> <li>2. Jéjunum (anses horizontales)</li> <li>3. Iléon (anses verticales)</li> </ol> </li> </ul>	<ul style="list-style-type: none"> <li>➤ <b>Sécrétions</b> intestinales</li> <li>➤ <b>Absorption</b> des nutriments grâce au mélange de bile &amp; sucs pancréatiques</li> <li>- Les <u>graisses</u> passent dans le système <u>lymphatique</u></li> <li>- Le <u>reste</u> passe dans le système <u>veineux</u>, conduit par la veine porte jusqu'au foie pour filtration</li> </ul>
<b>Côlon</b> = gros intestin	<ul style="list-style-type: none"> <li>➤ <b>Bosselé</b> (bosselures = haustrations)</li> <li>➤ <b>Tænia</b> = bandelettes coliques = condensations des fibres musculaires longitudinales.</li> </ul> <p>Le colon en a 3, qui se rejoignent à la base de l'appendice vermiforme.</p>	<ul style="list-style-type: none"> <li>➤ <b>Dessécher</b> le contenu intestinal en <b>réabsorbant d'eau</b>, et ainsi obtenir des <u>matières fécales</u> lors de la défécation qui sont <u>moulées</u>.</li> <li>➤ Le côlon n'a pas de fonction d'absorption alimentaire !</li> </ul>

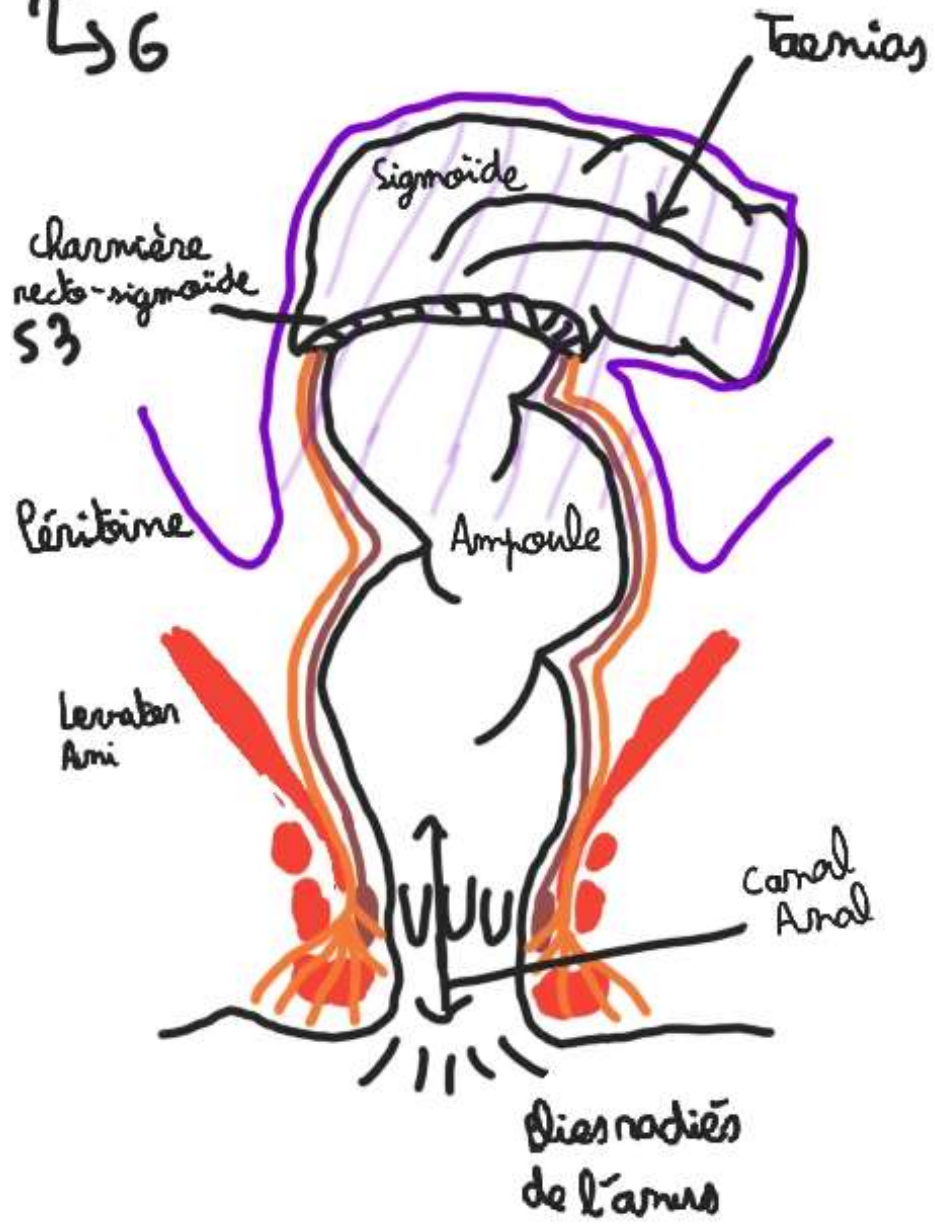


# X. Rectum :





H  
↑  
↳ G



H  
↑  
↳ SG

