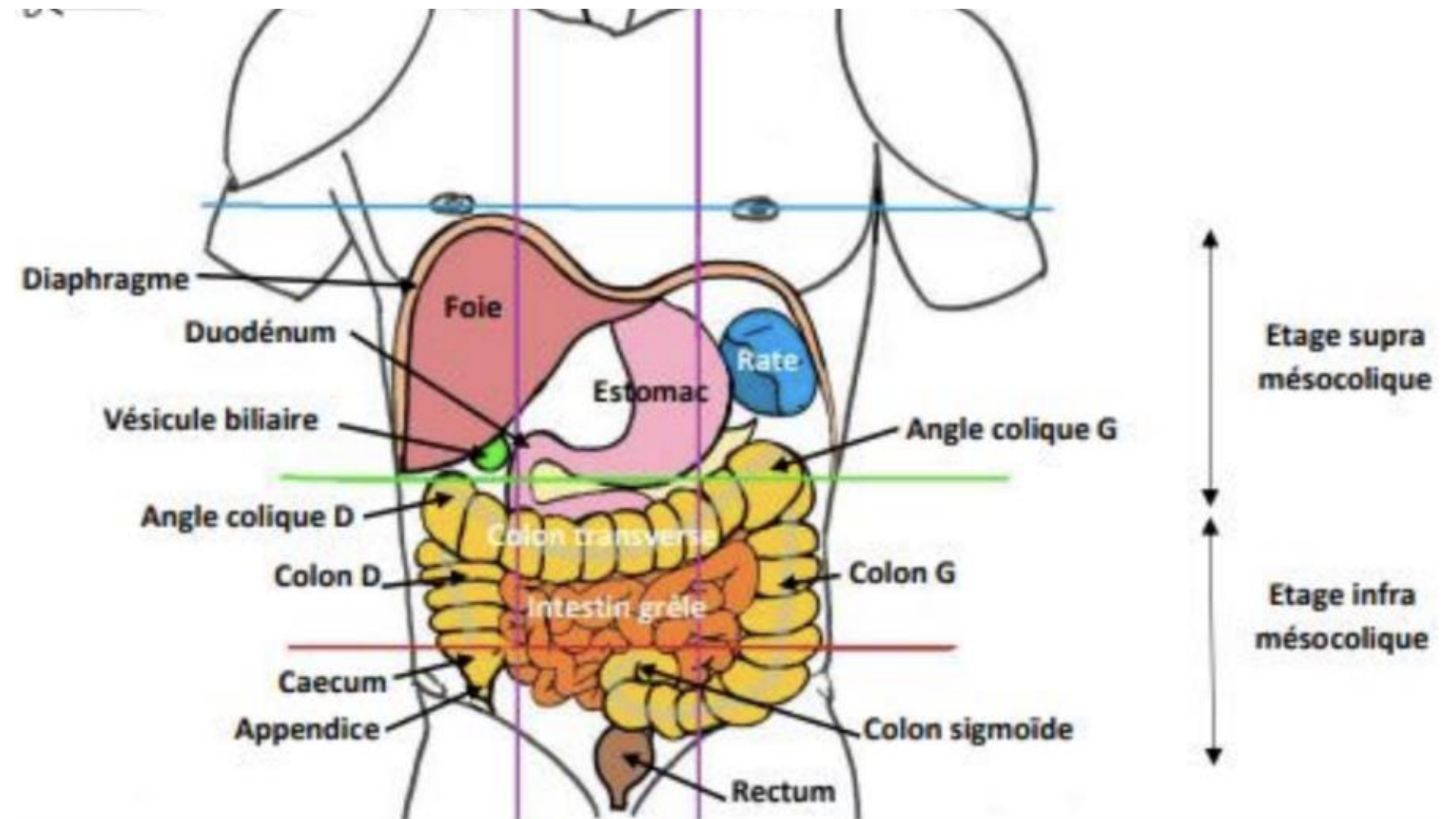
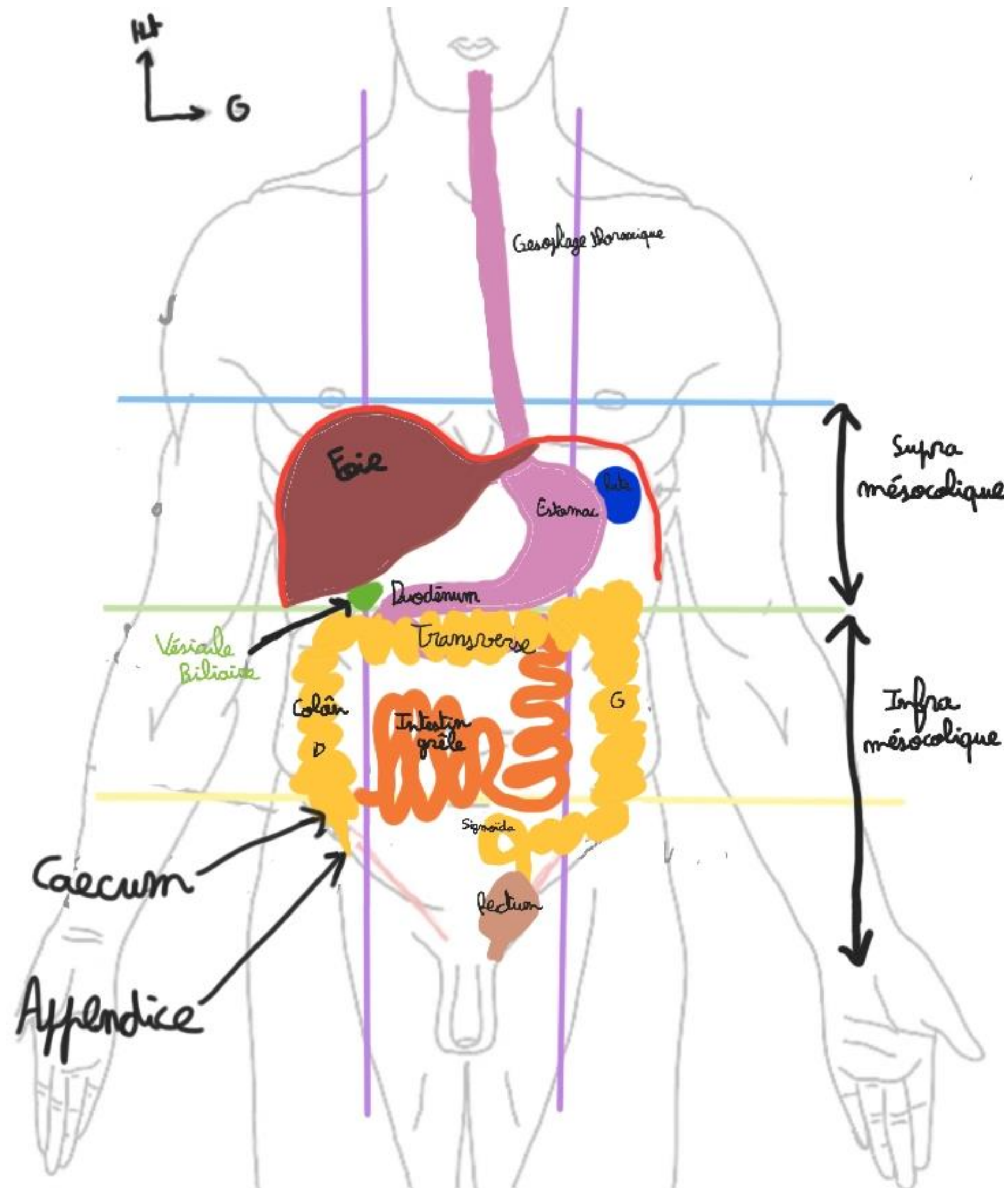
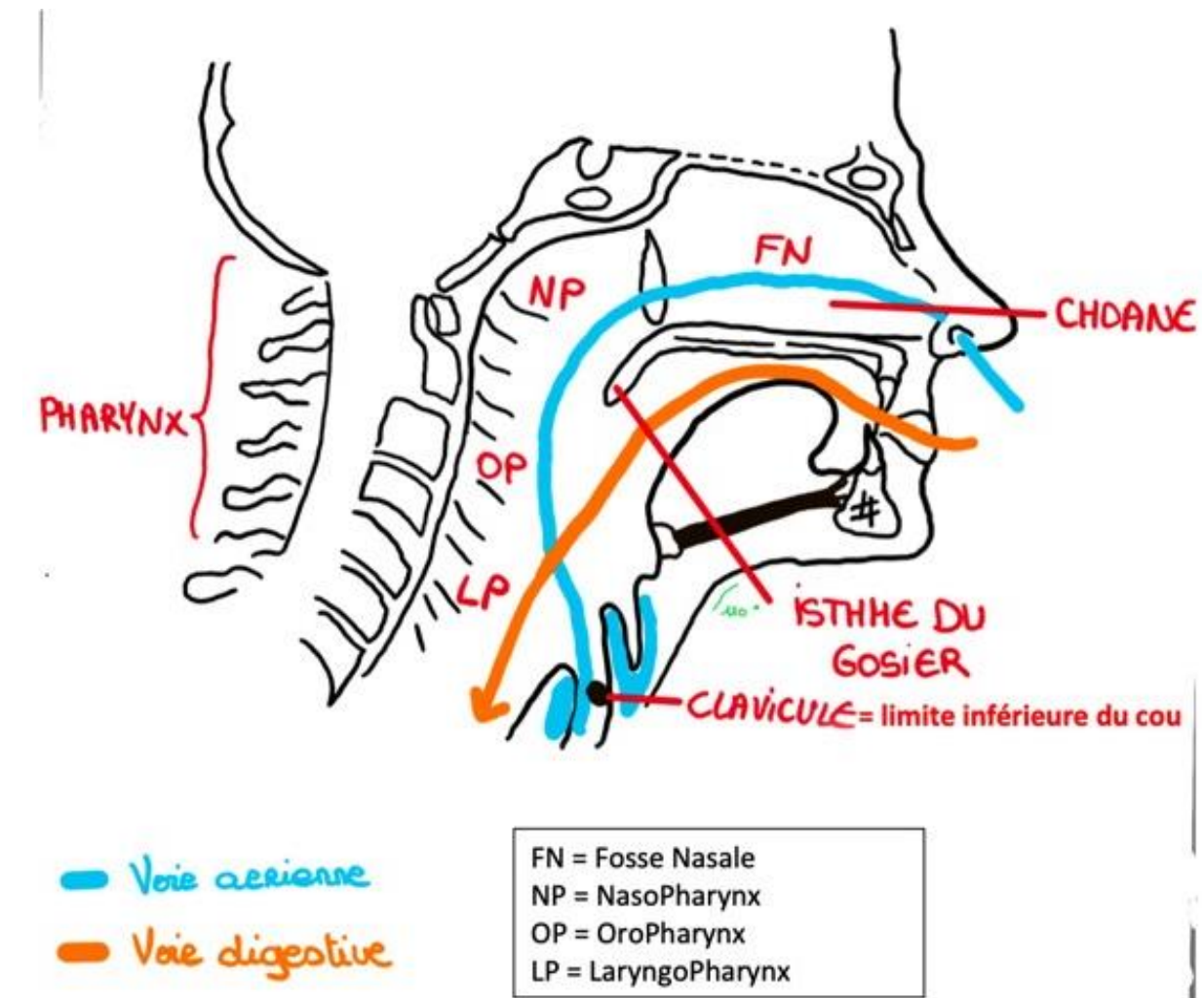
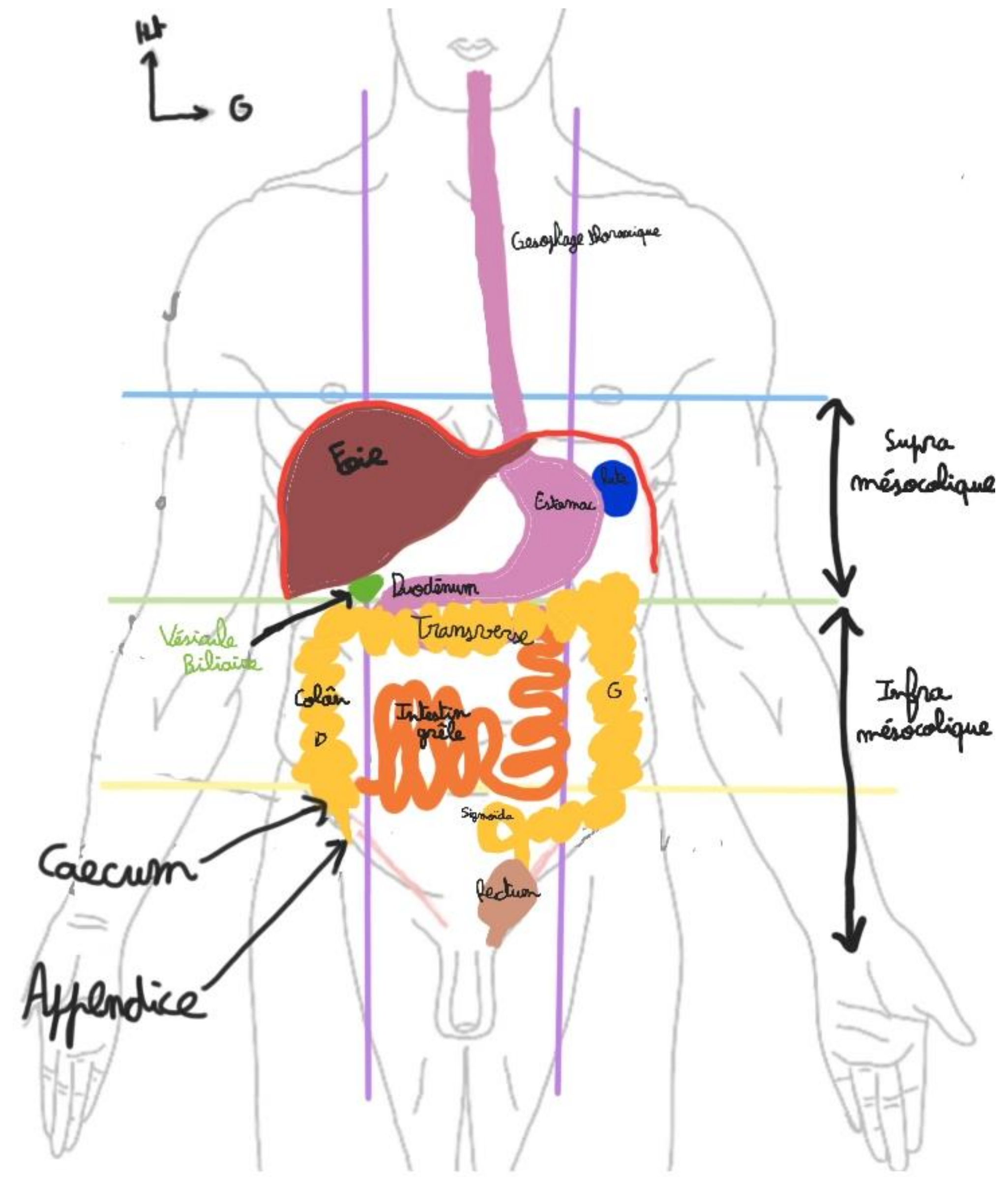
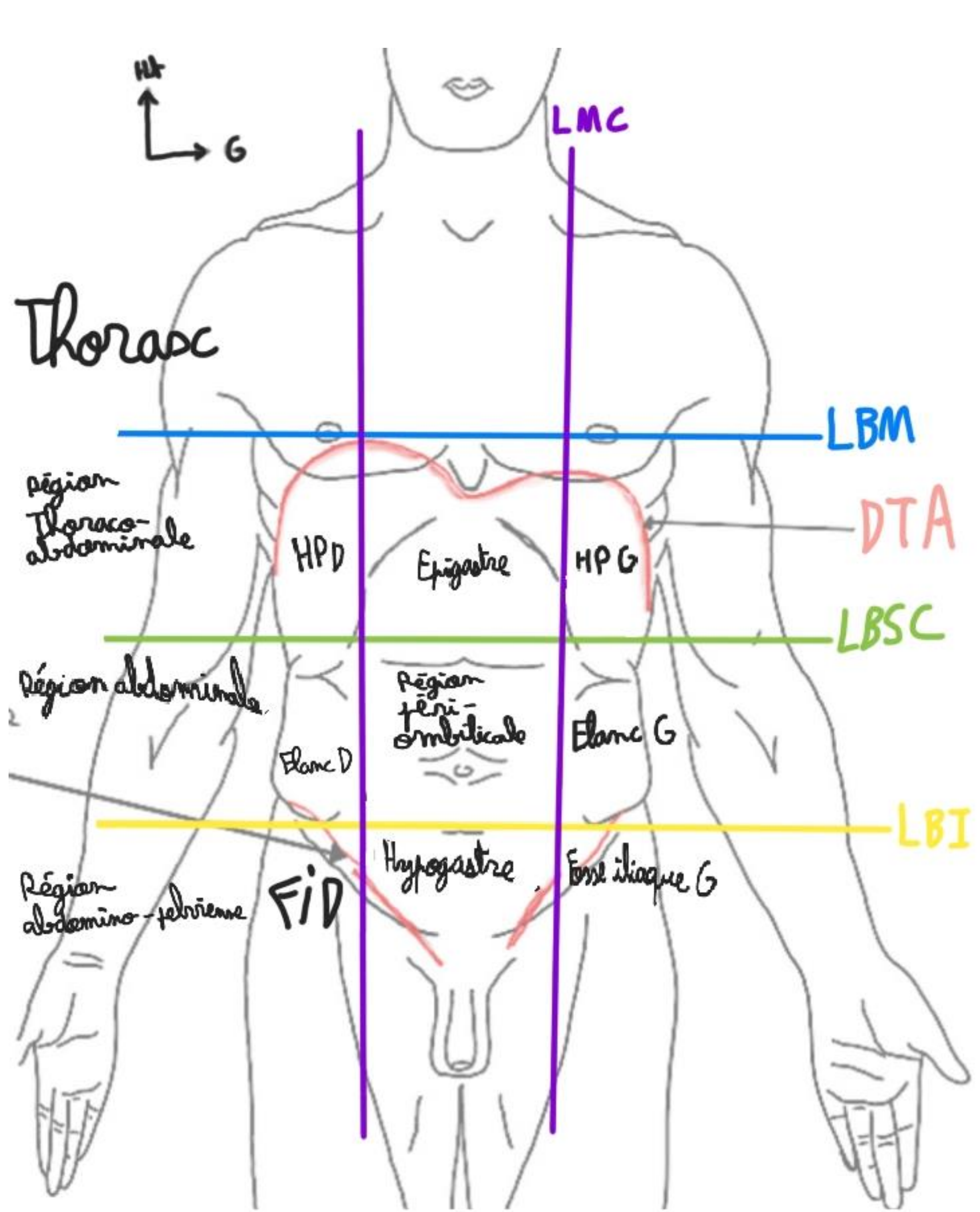


Appareil Digestif

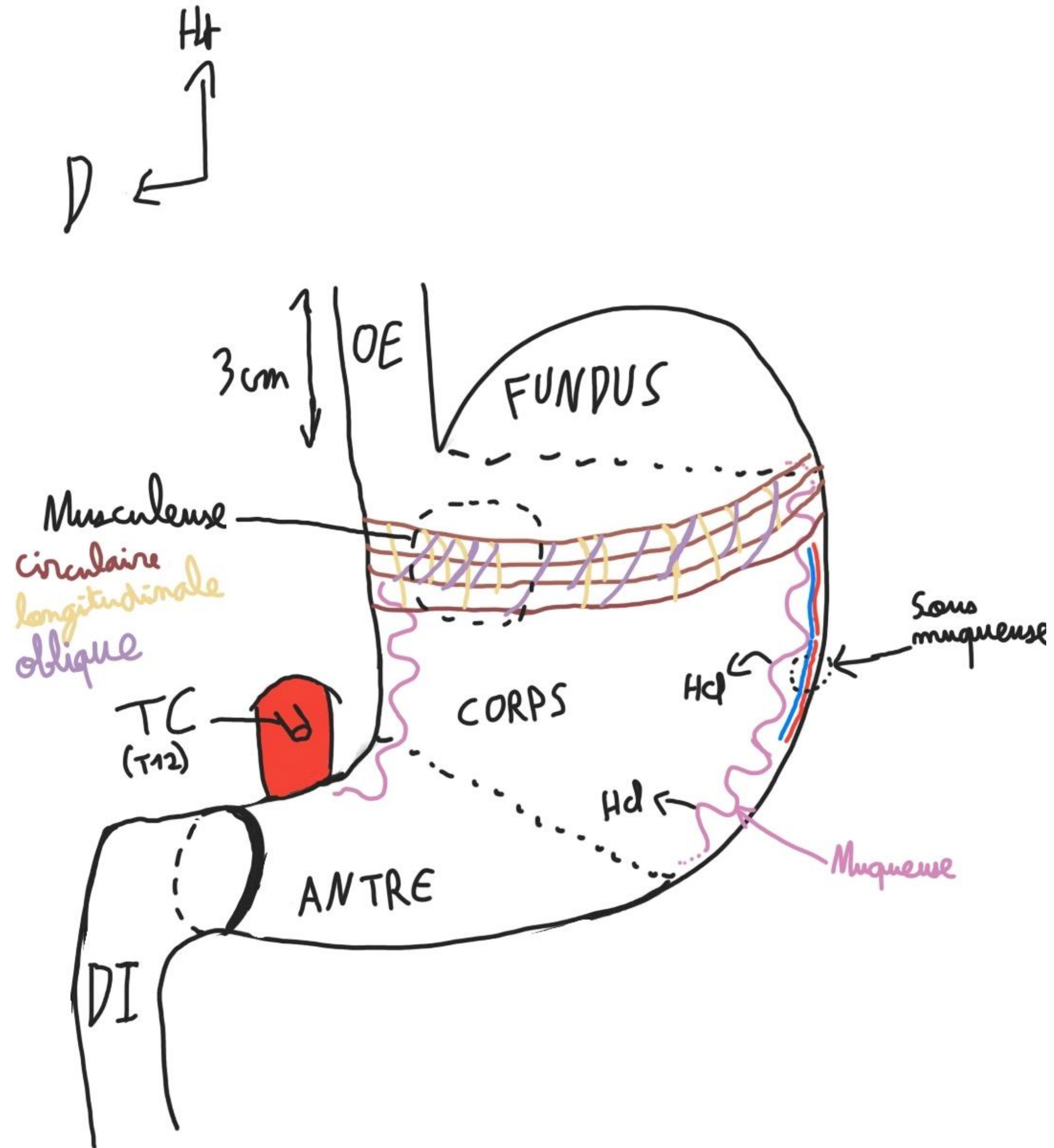
Le tutorat est gratuit. Toute reproduction ou vente est interdite.

I. Topo générale du Tronc :

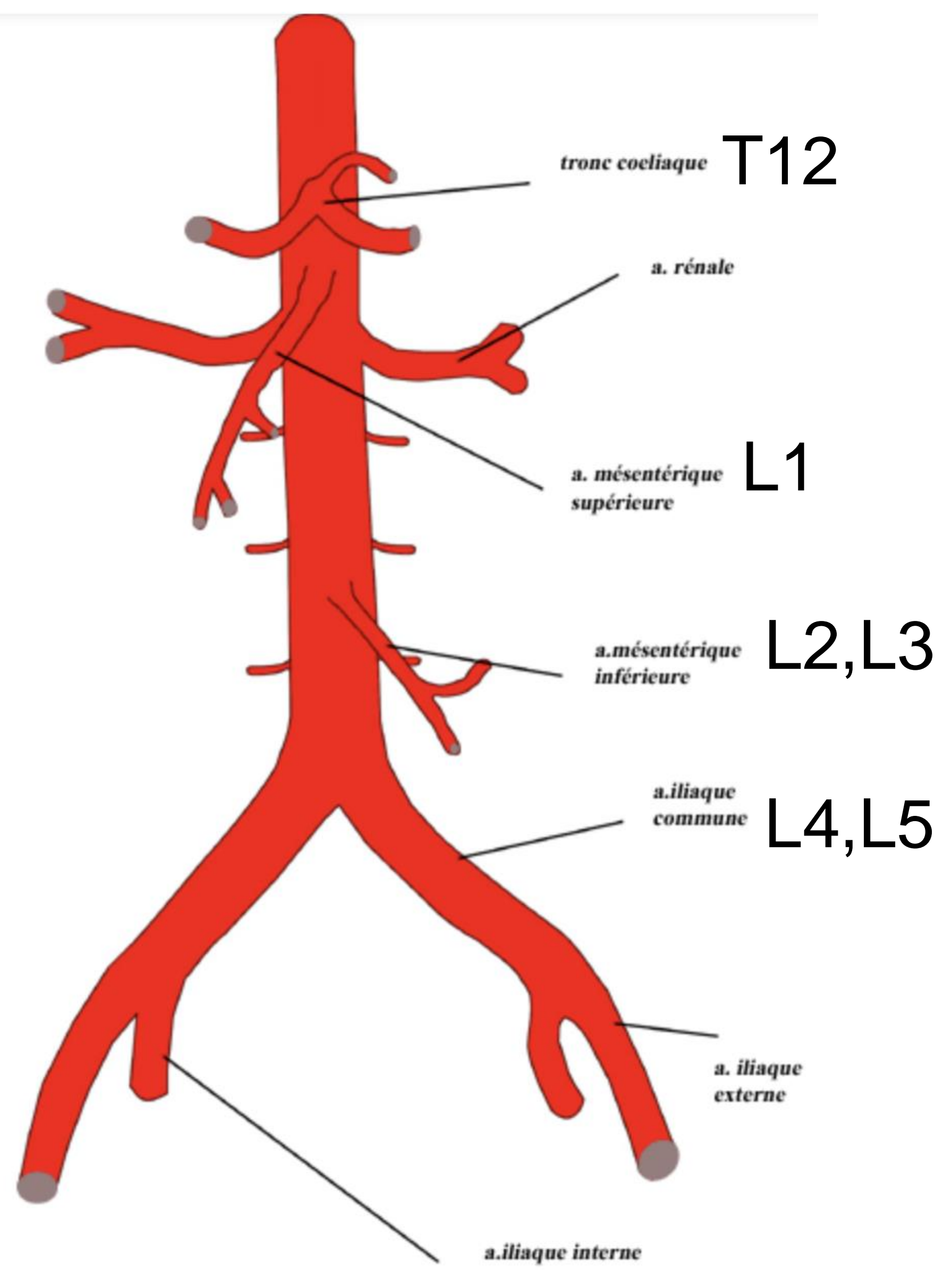




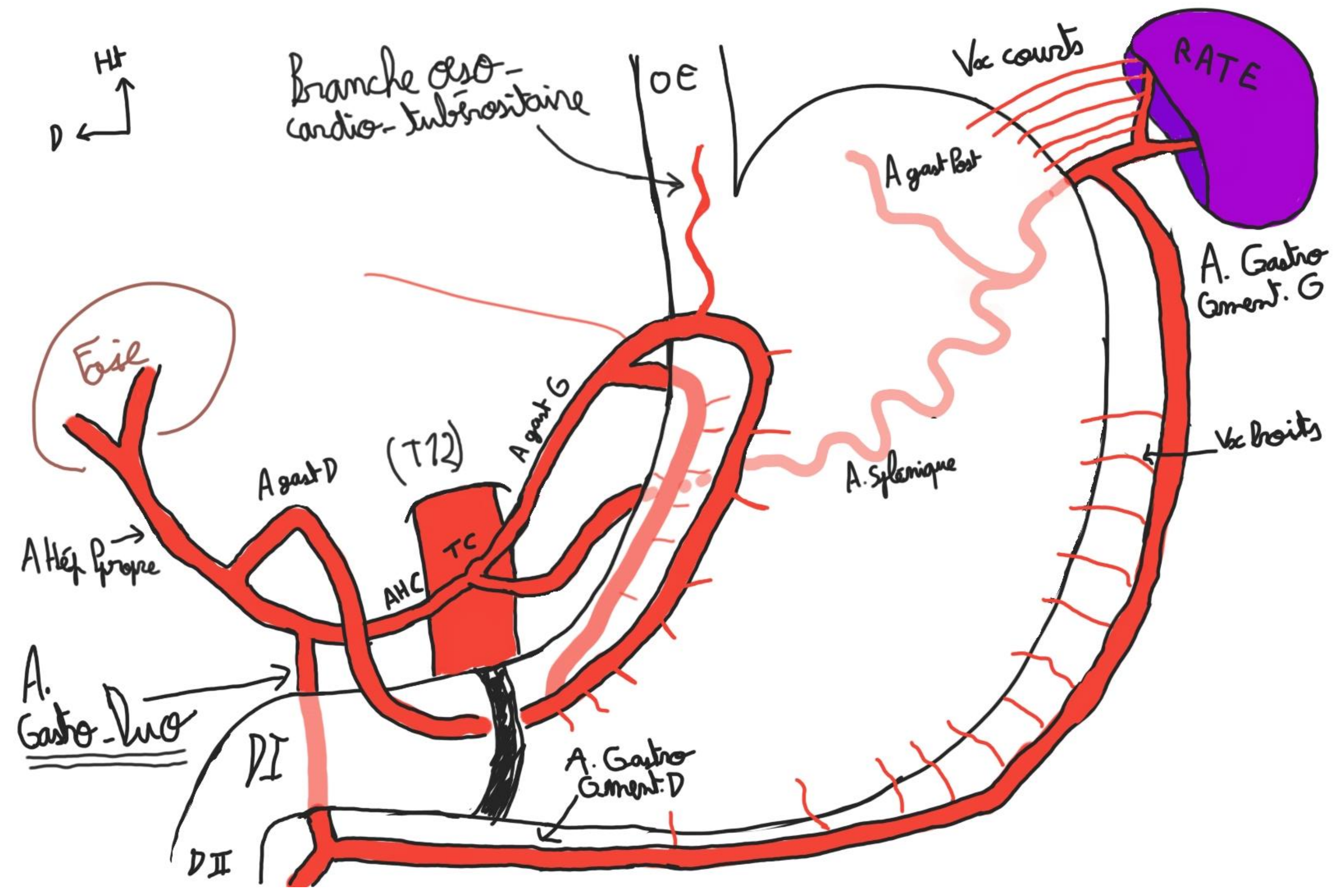
II. Estomac :



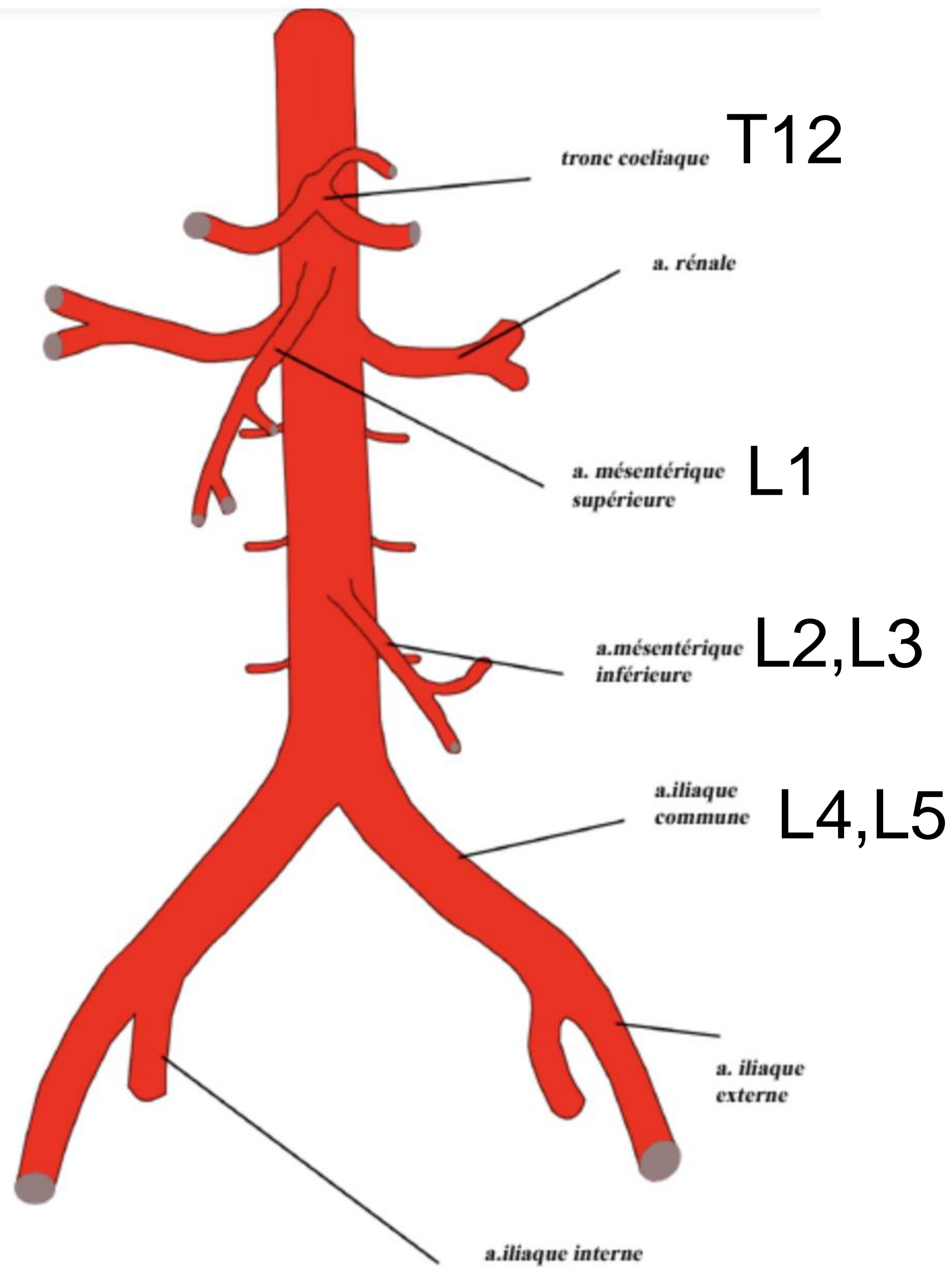
III. Vasculaire abdominale :



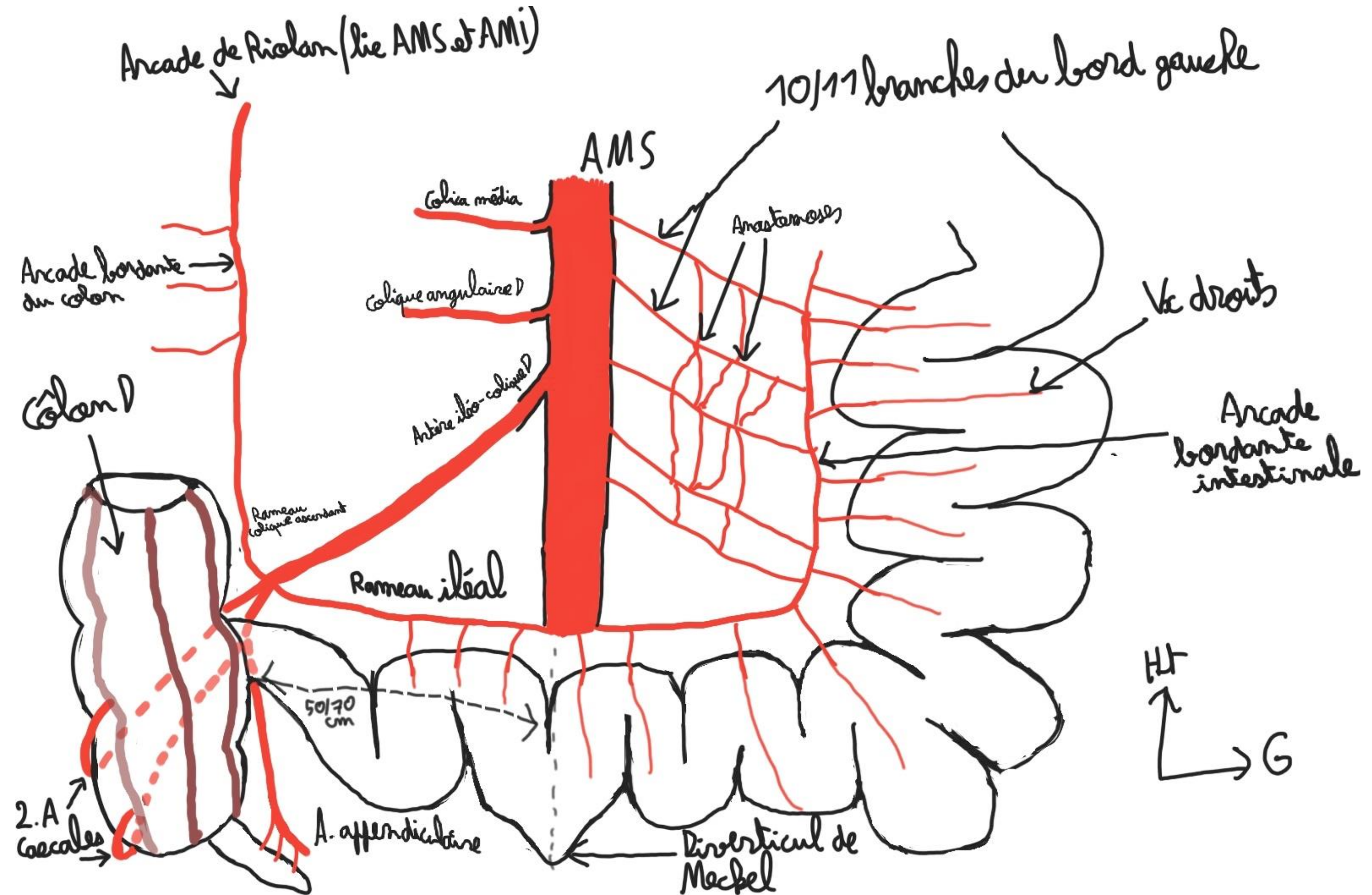
Aorte abdominale et ses branches



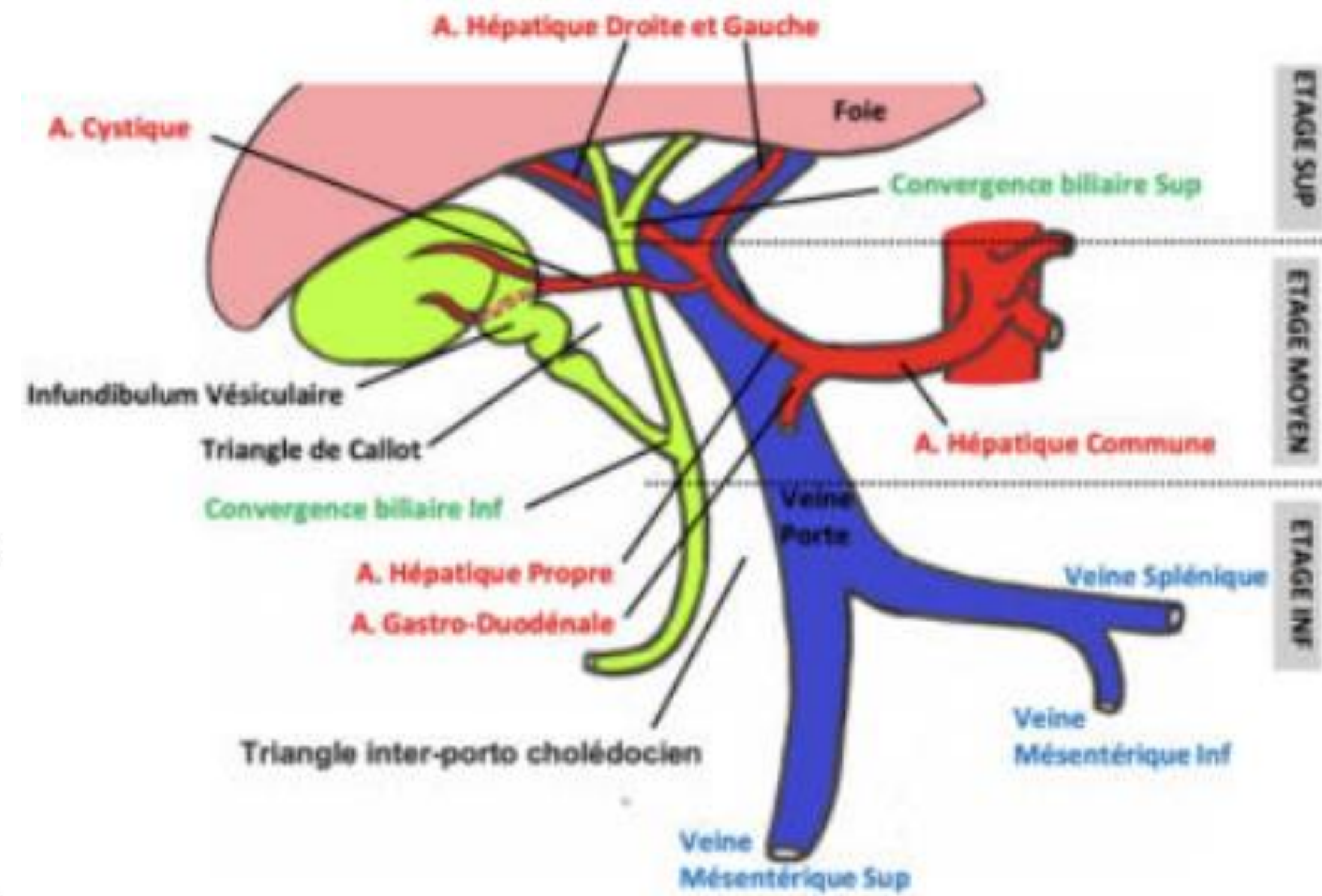
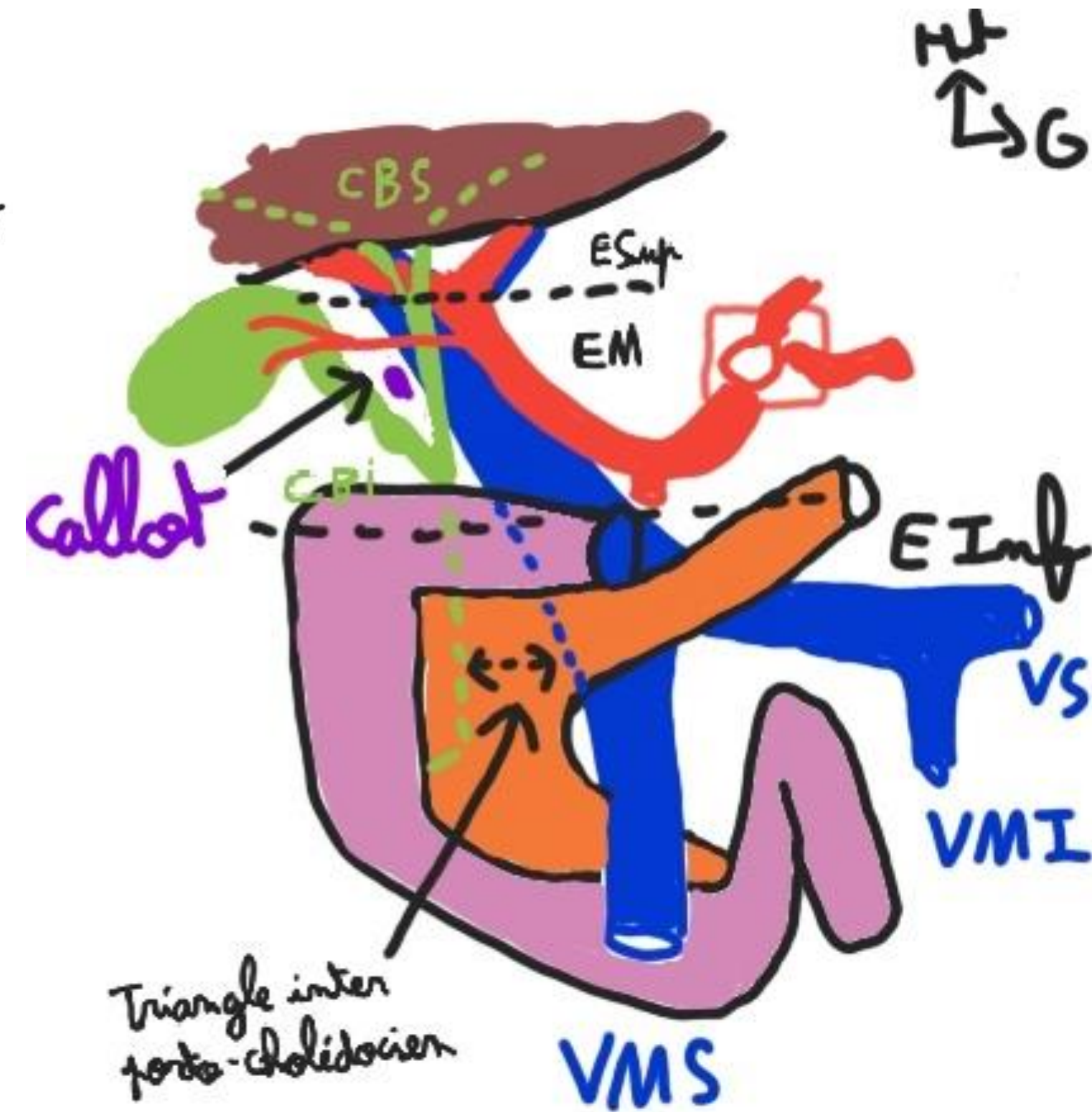
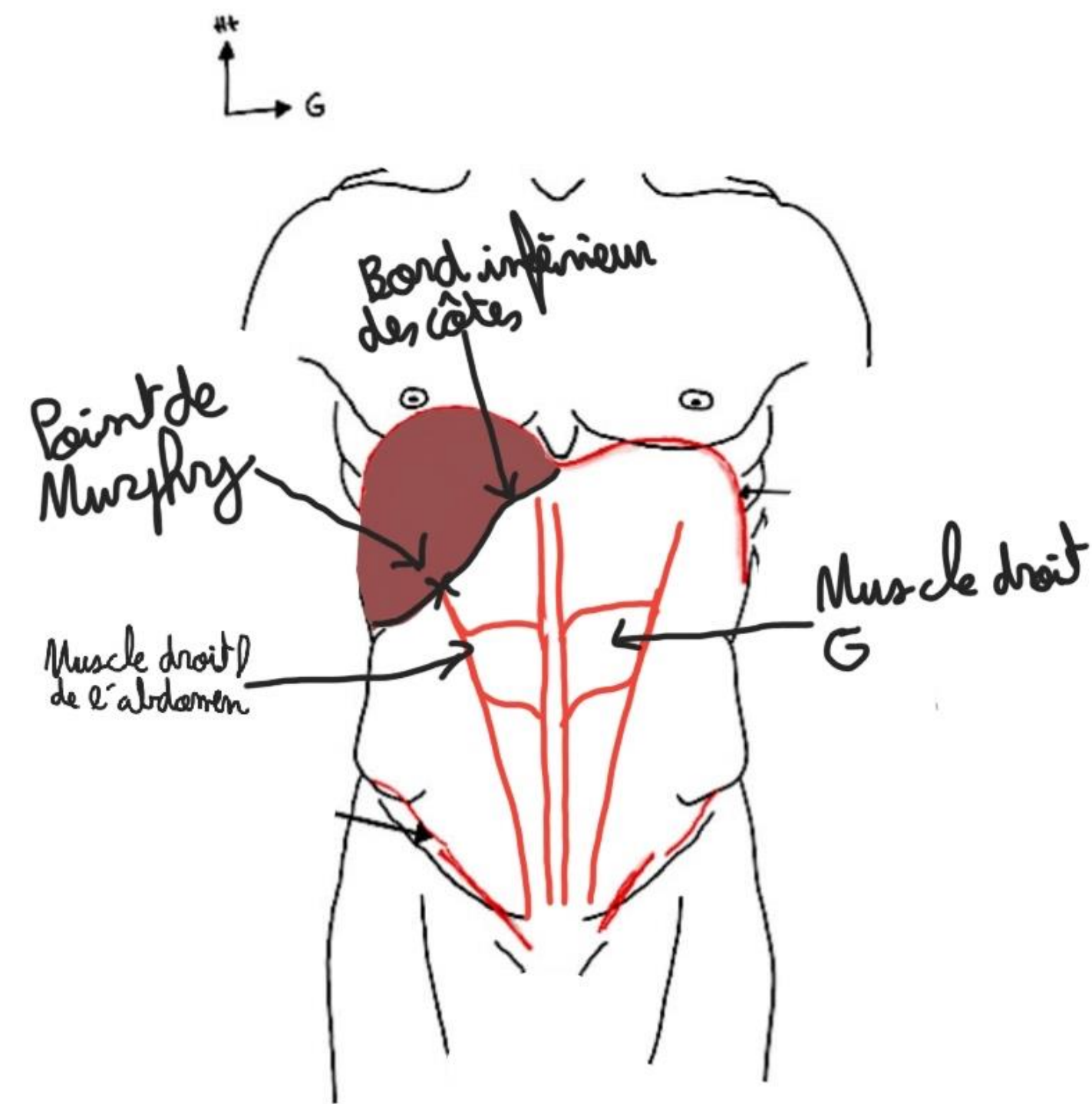
Le tutorat est gratuit. Toute reproduction ou vente est interdite.



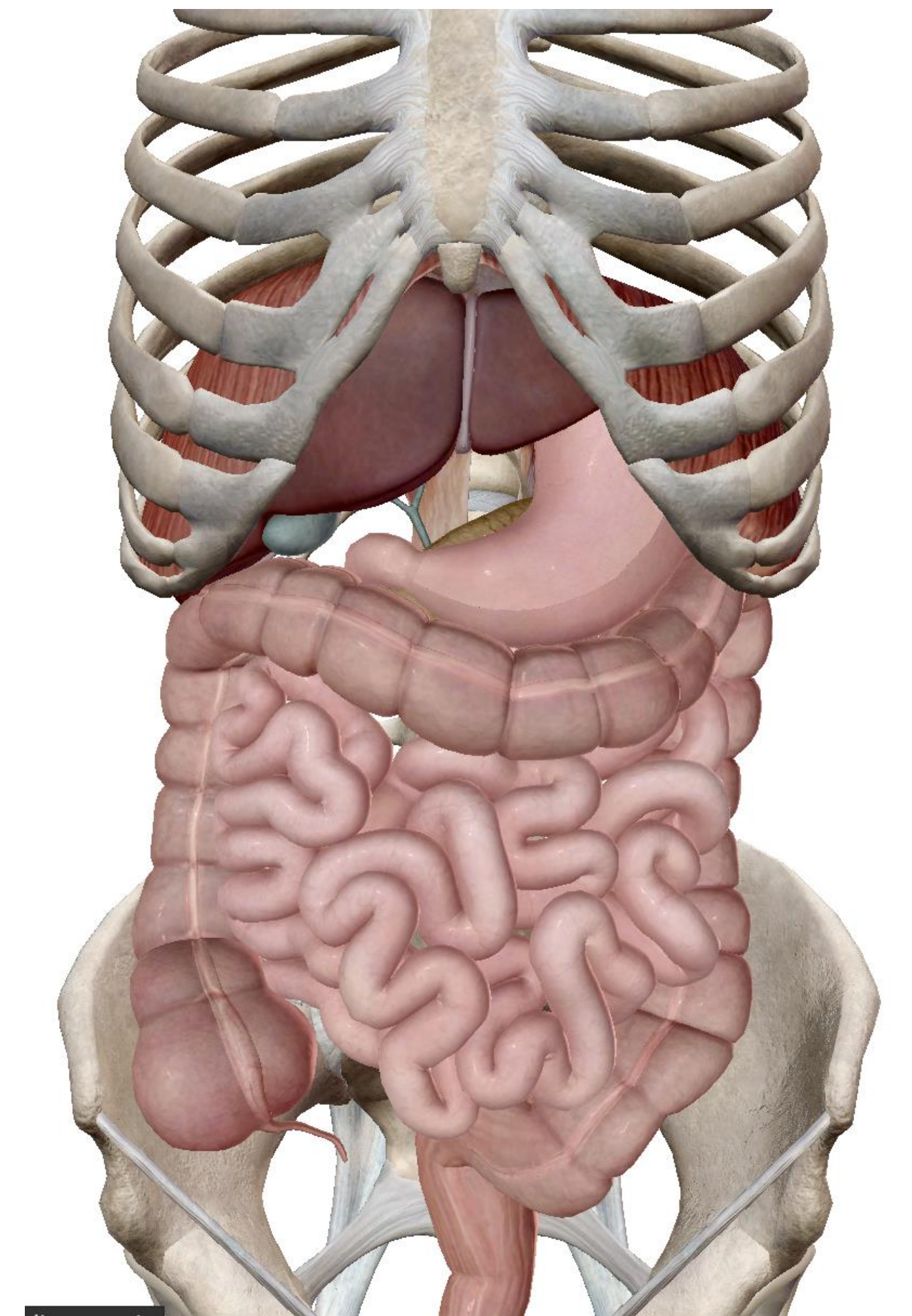
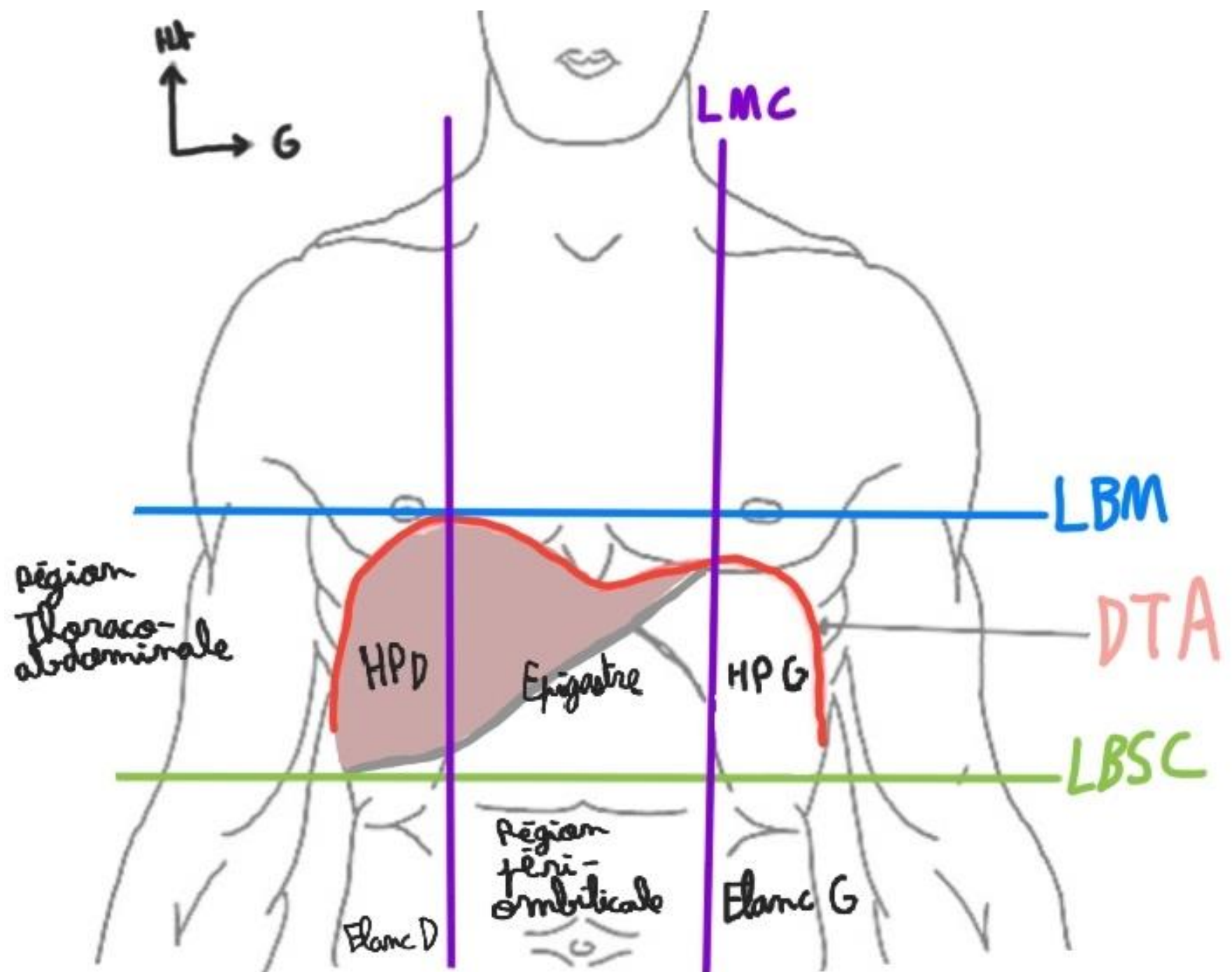
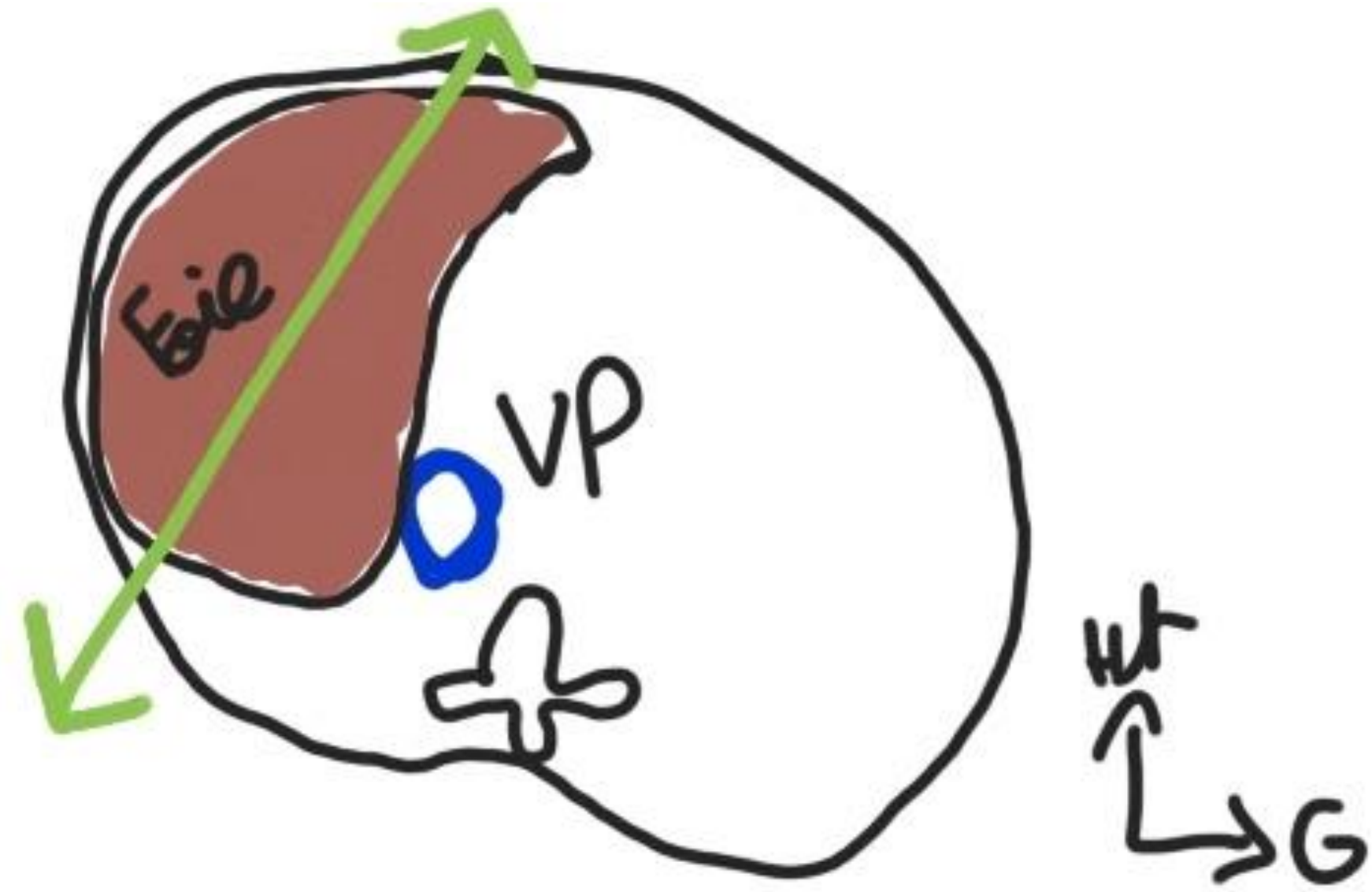
Aorte abdominale et ses branches

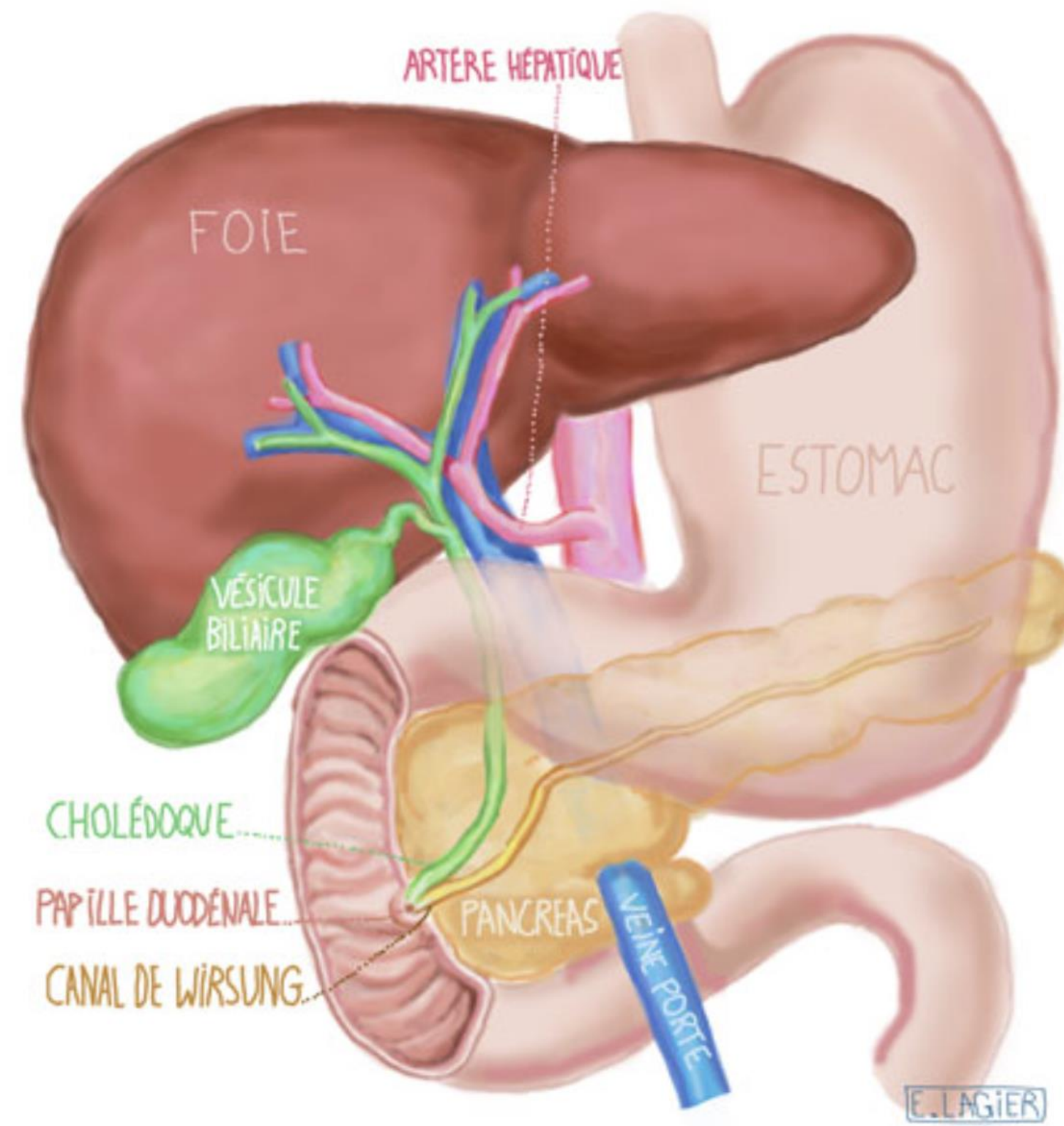
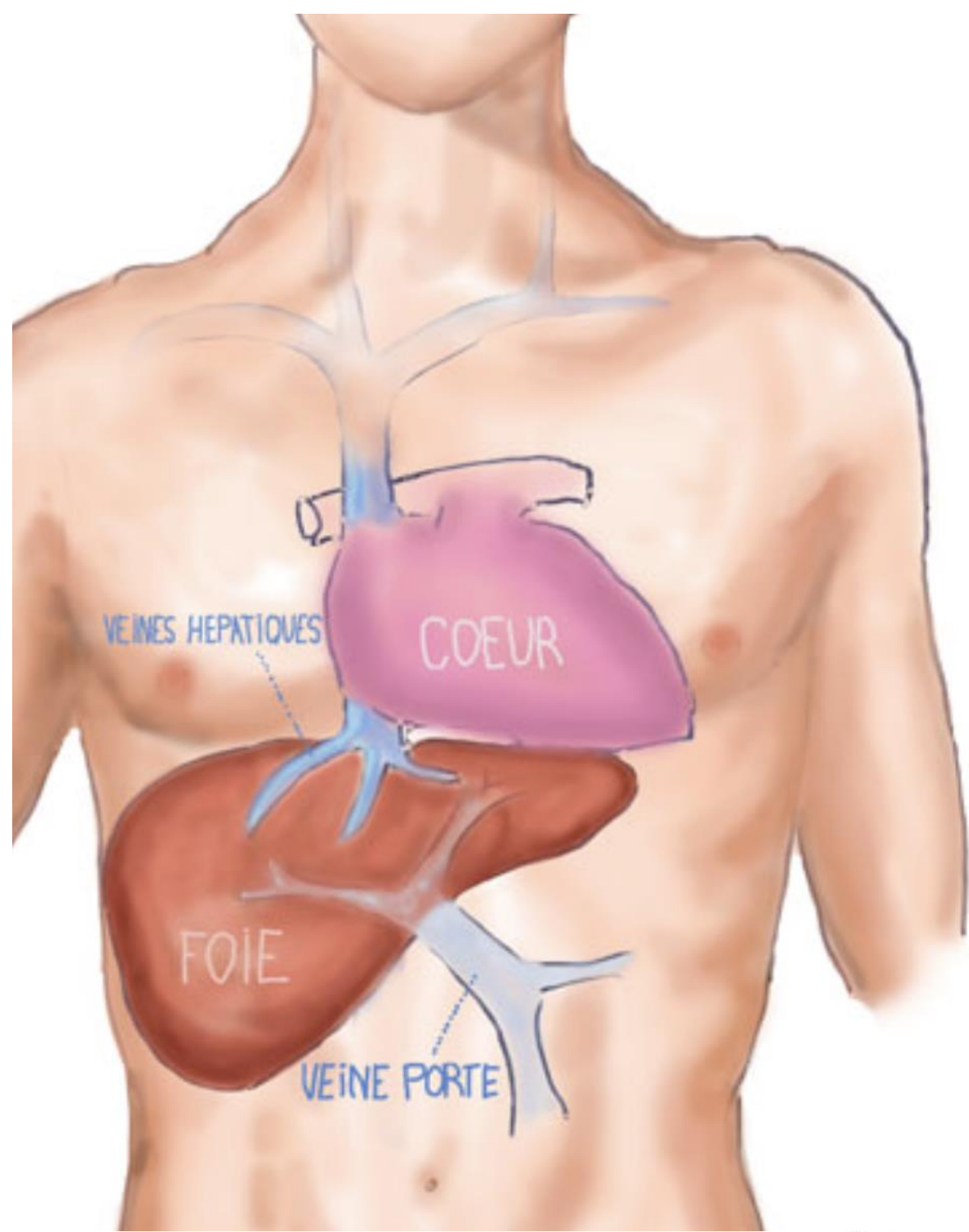


IV. Hile Hépatique :

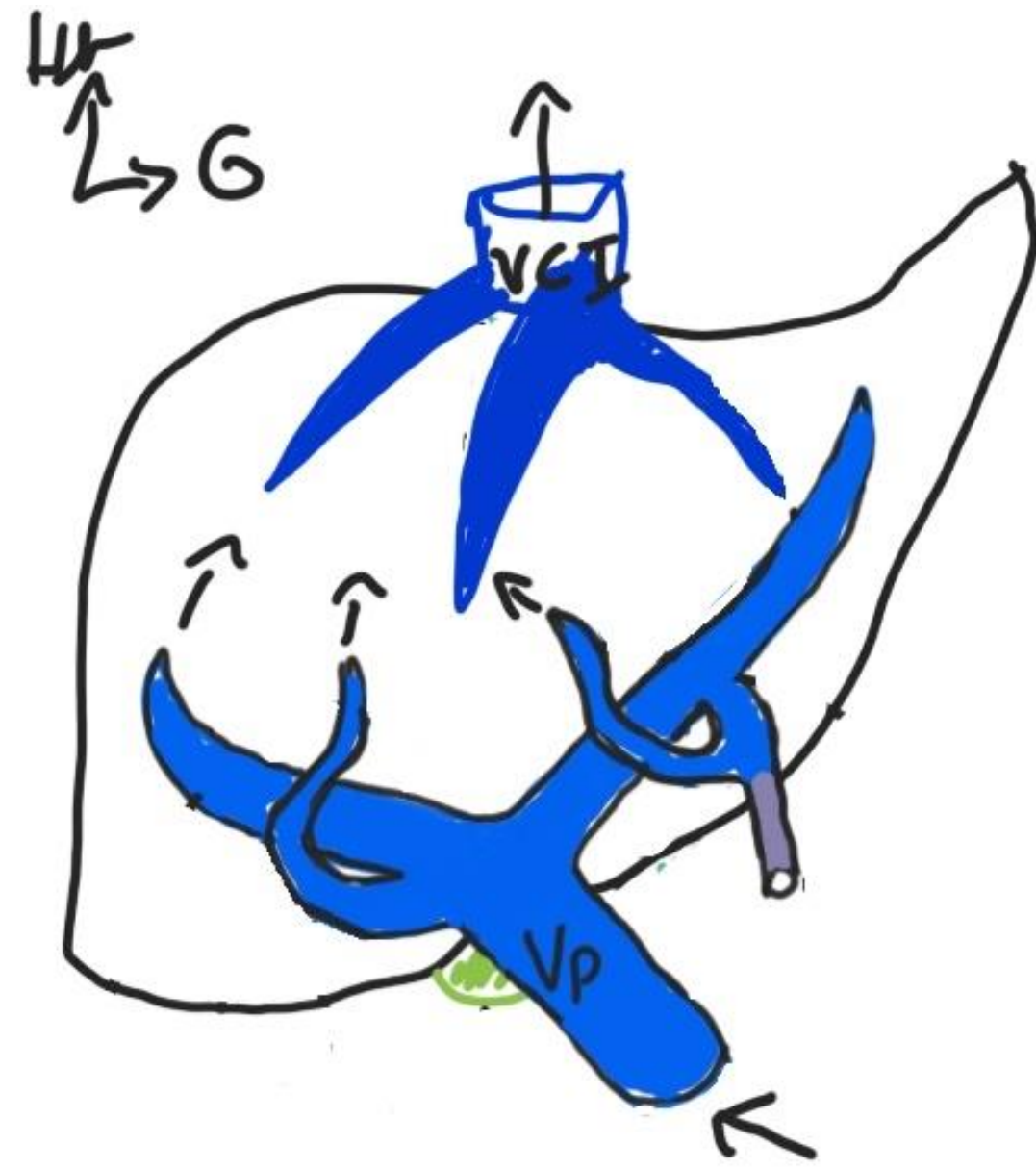
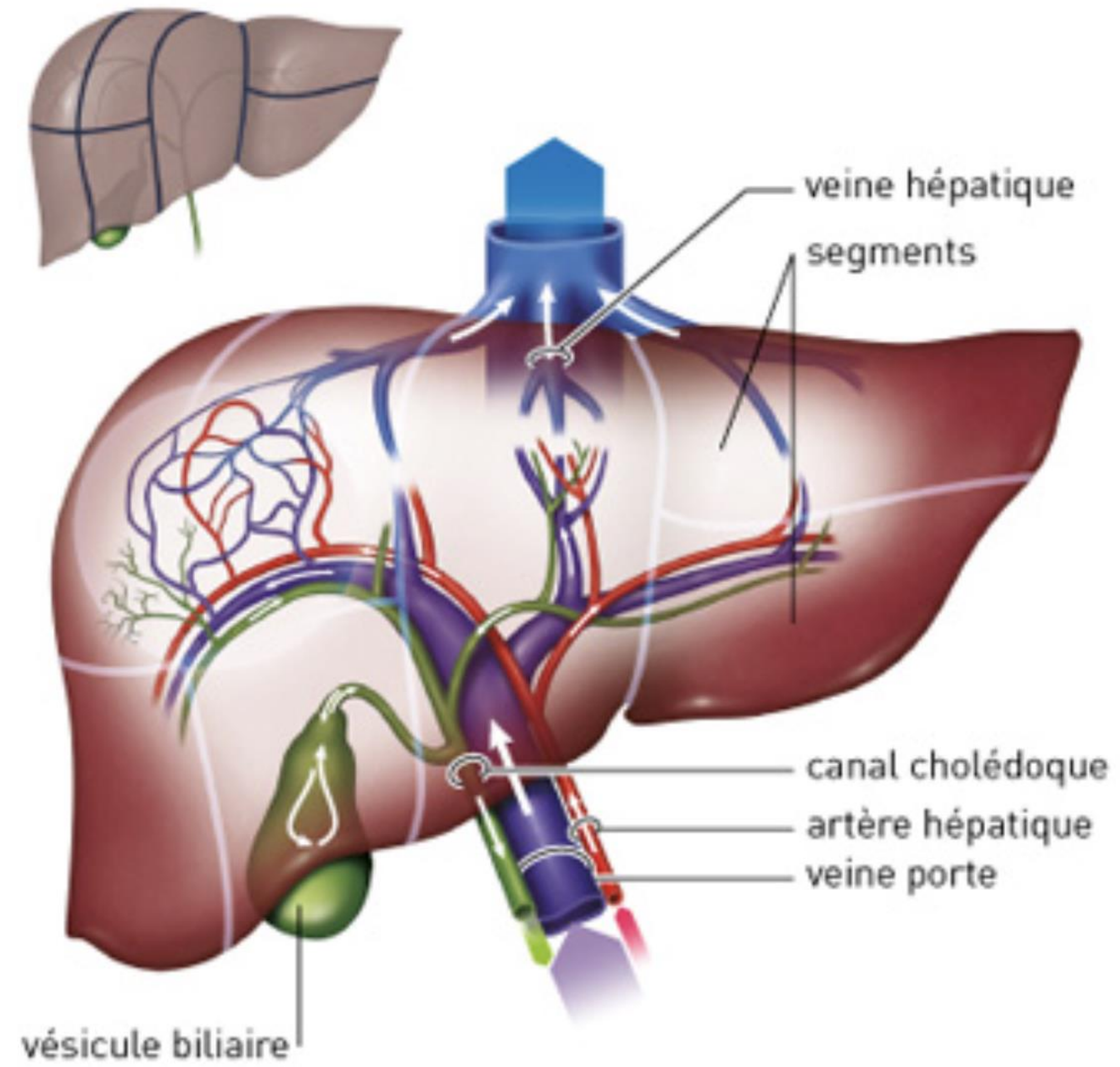


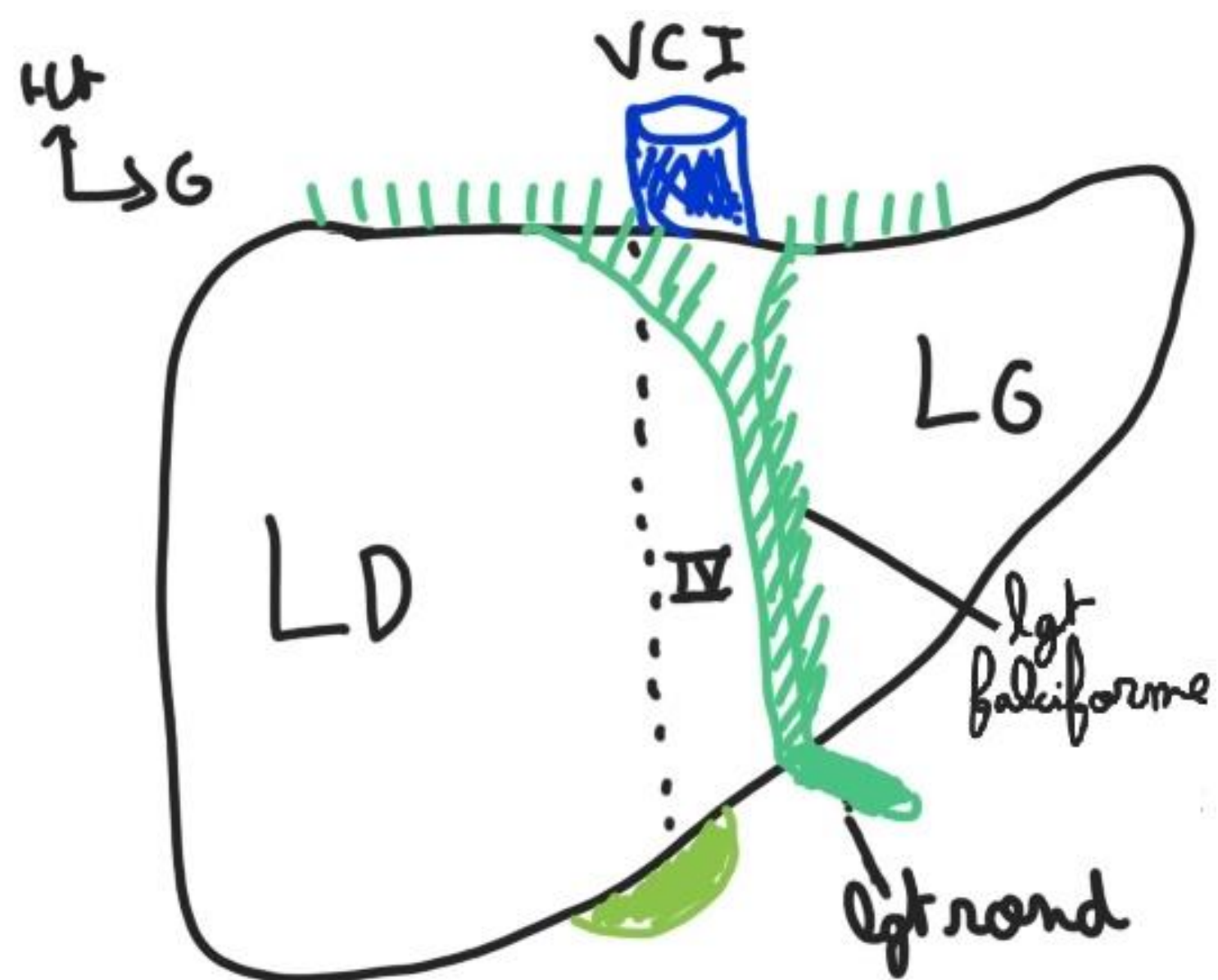
V. Foie :



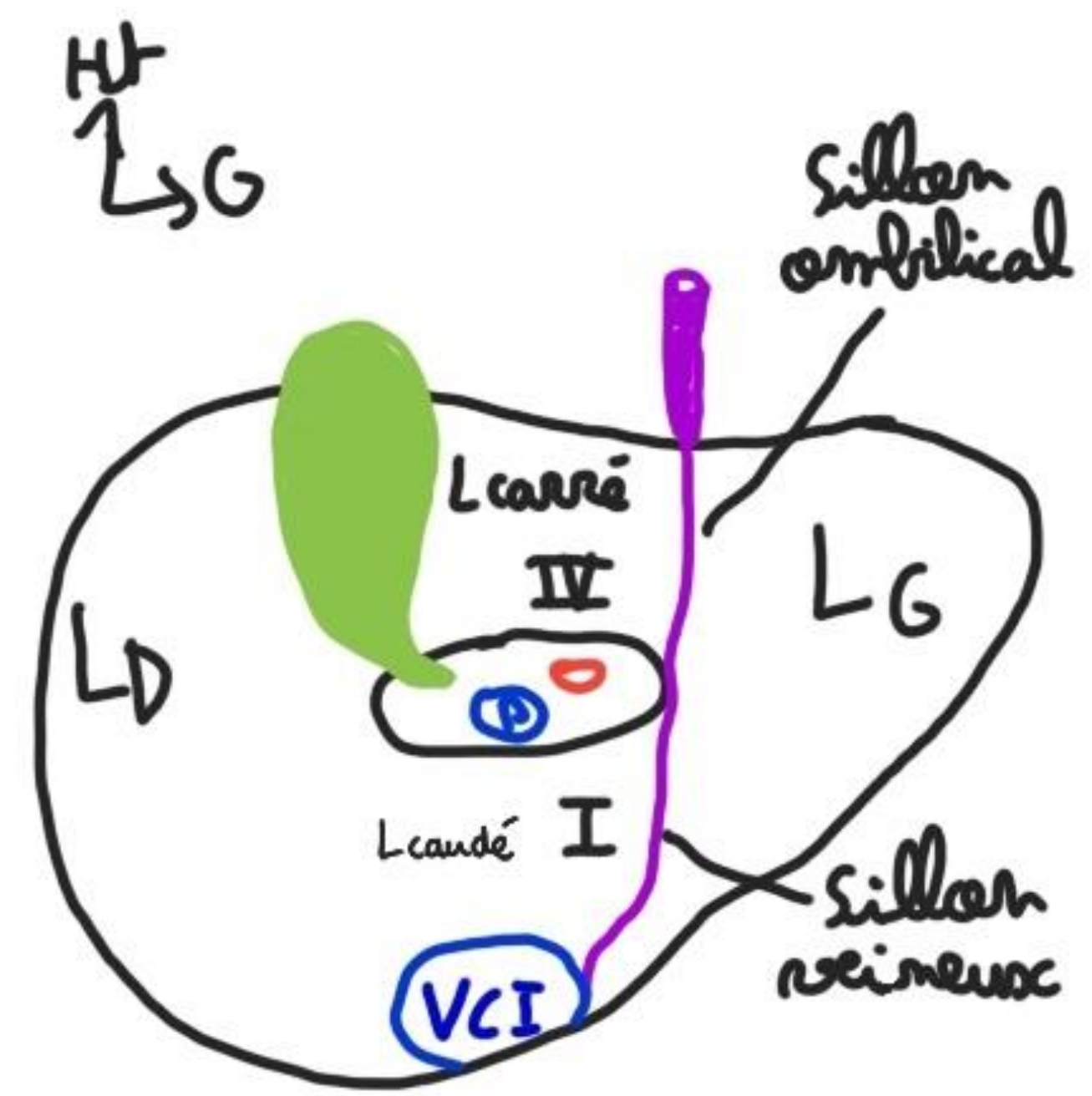


La circulation du sang et de la bile dans le foie

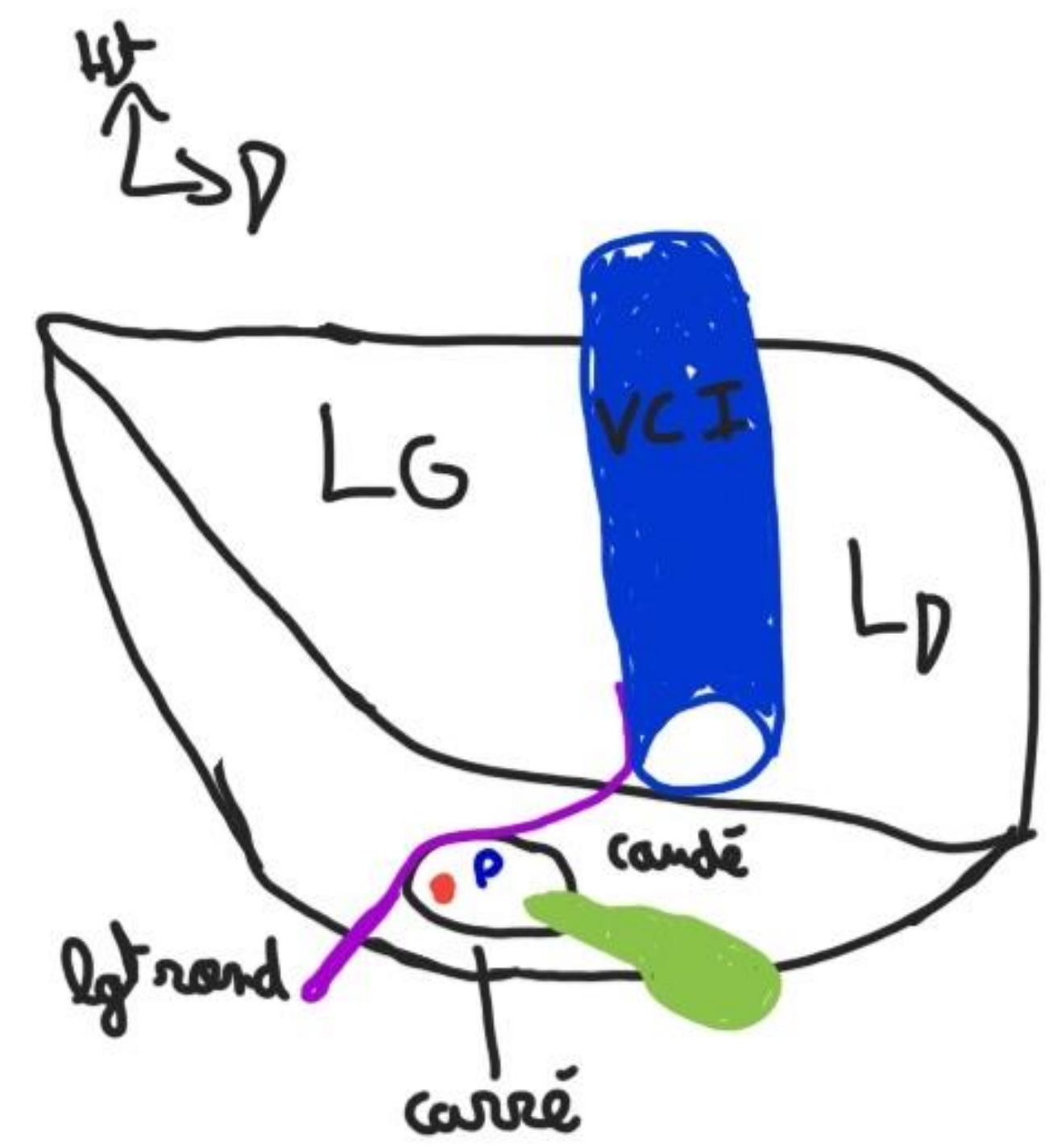




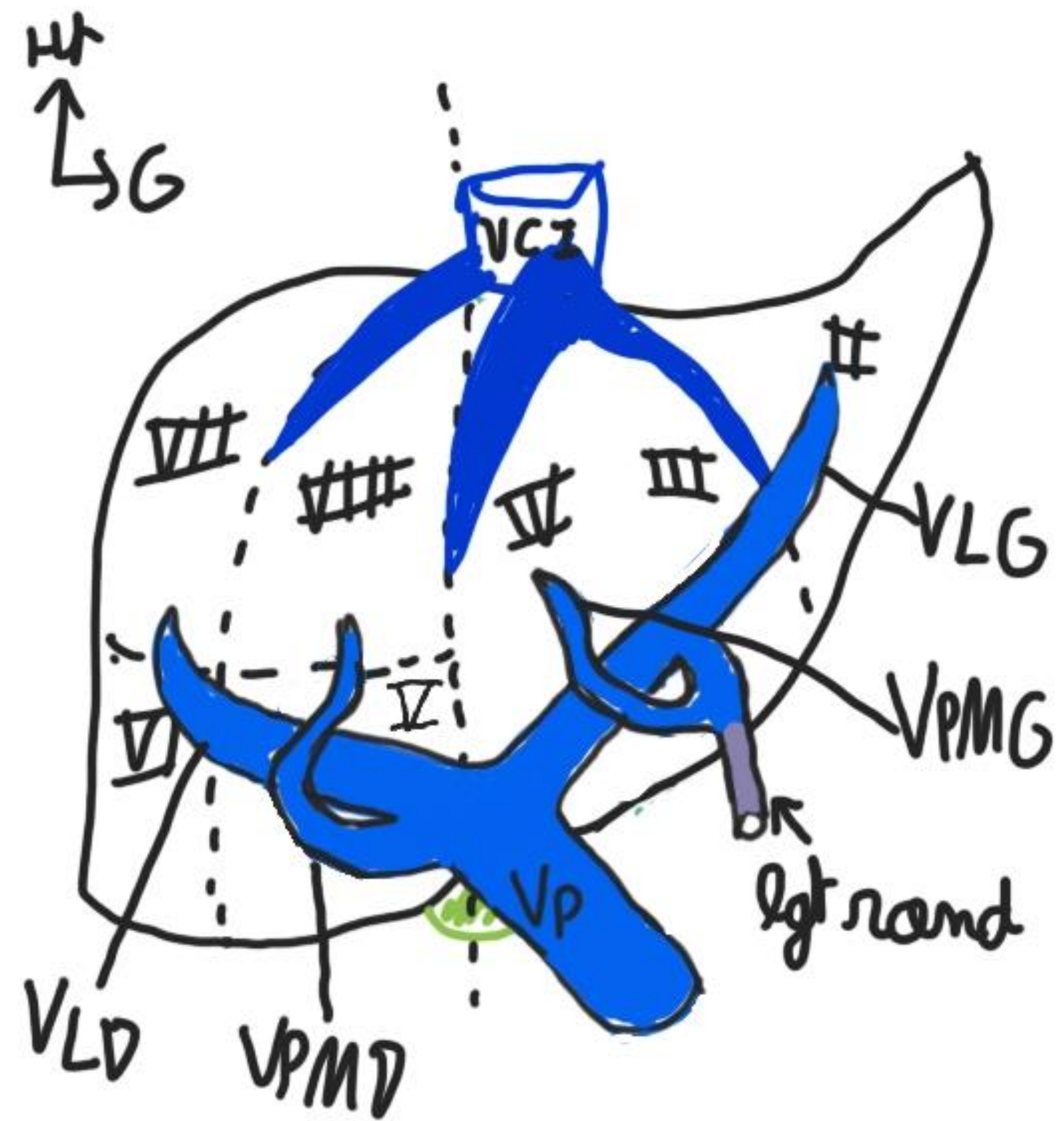
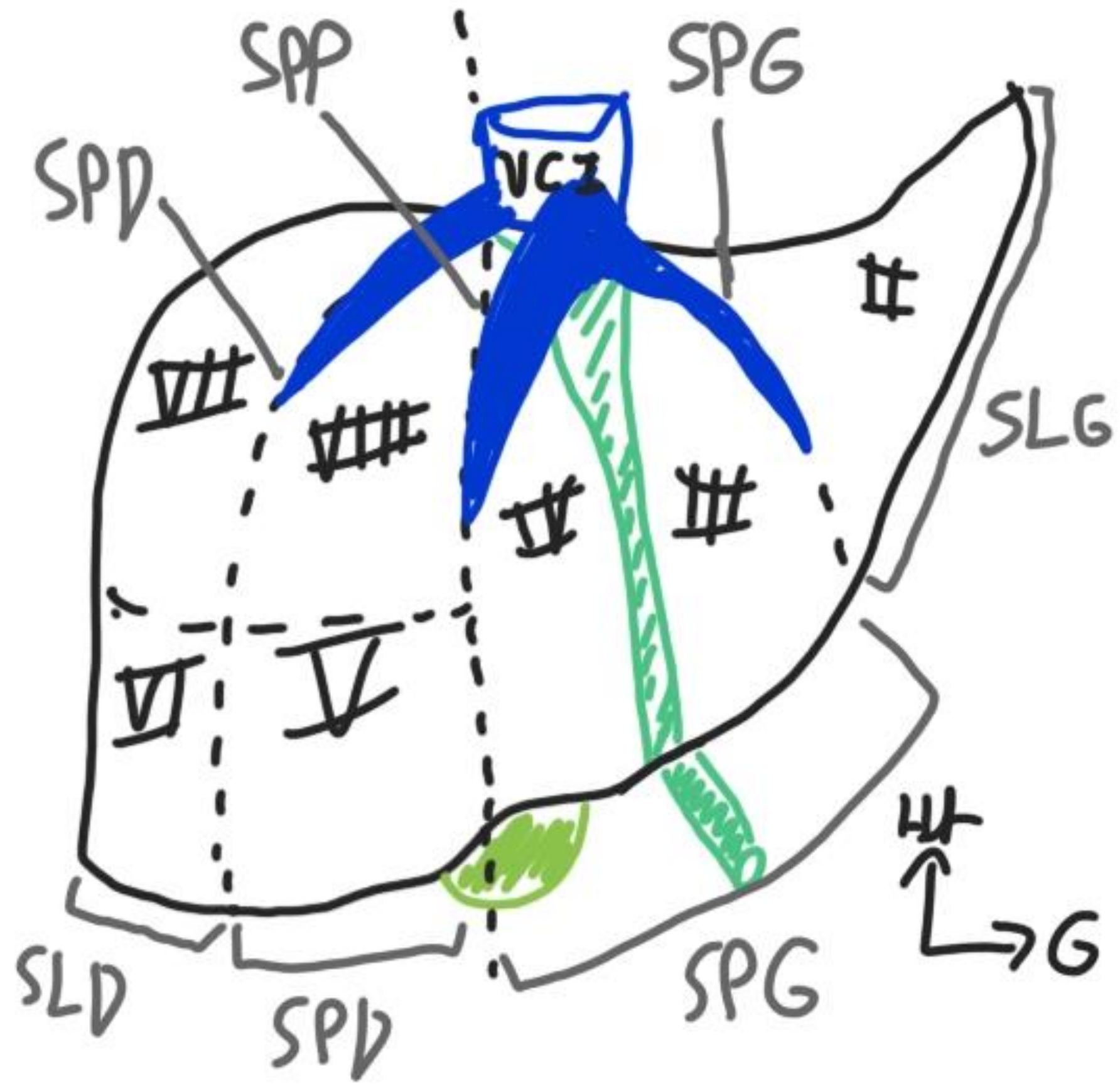
Antérieure



Inférieure



Postérieure



Segments	Secteurs	Veines	Foie	Lobe
II	Latéral G	Latérale G	GAUCHE	GAUCHE
III	Paramédian G	Paramédiane G	GAUCHE	GAUCHE
IV	Paramédian G	Paramédiane G	GAUCHE	DROIT, CARRÉ
V	Paramédian D	Paramédiane D	DROIT	DROIT
VI	Latéral D	Latérale D	DROIT	DROIT
VII	Latéral D	Latérale D	DROIT	DROIT
VIII	Paramédian D	Paramédiane D	DROIT	DROIT
I				CAUDÉ

Le tutorat est gratuit. Toute reproduction ou vente est interdite.

VI. Rectum :

