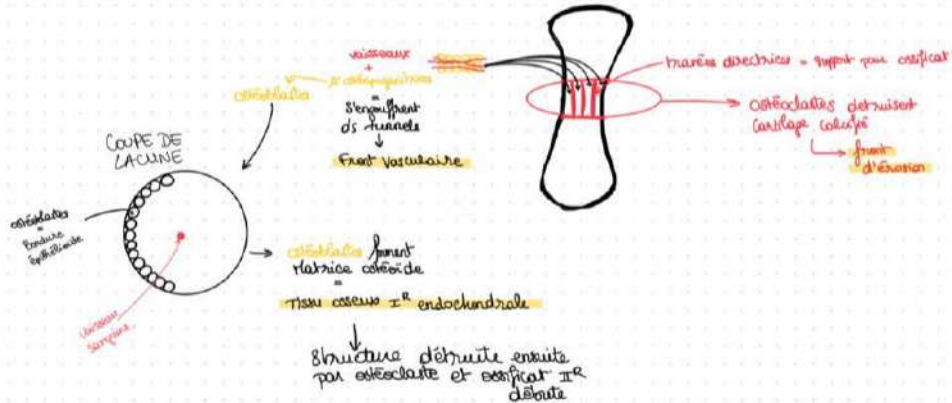
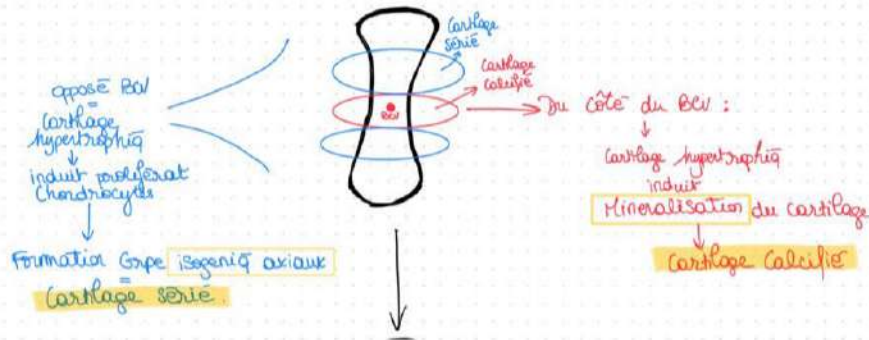
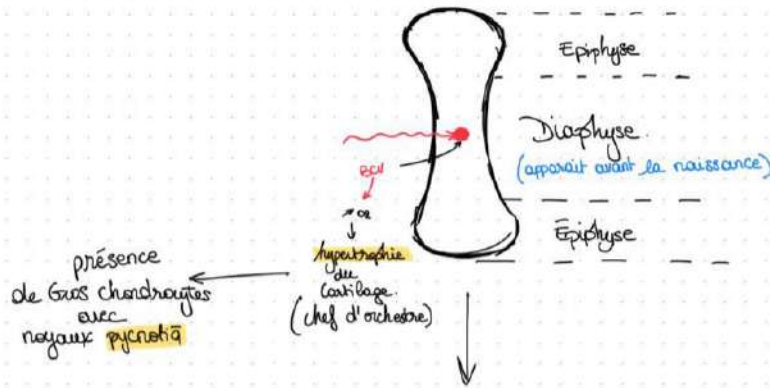
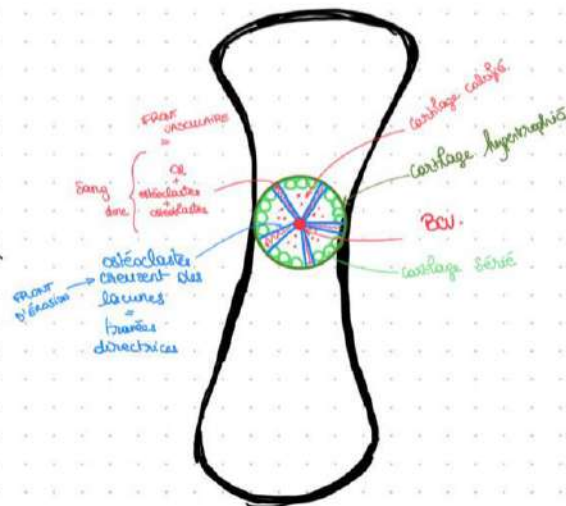


OSSIFICATION IR

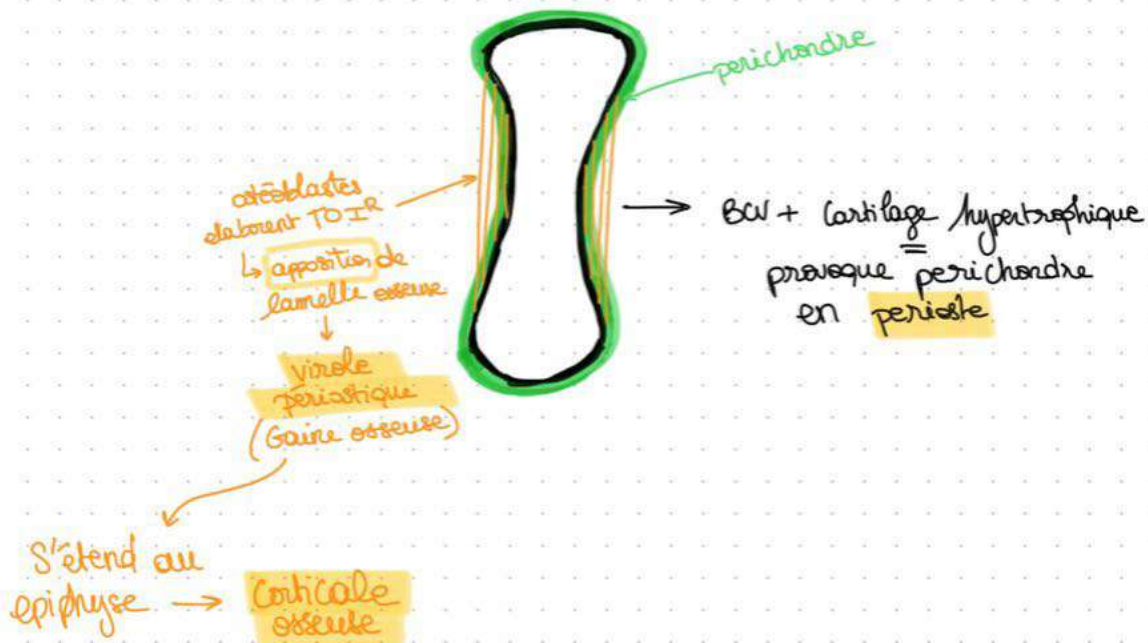
OSSIFICATION ENDOCHONDRALE



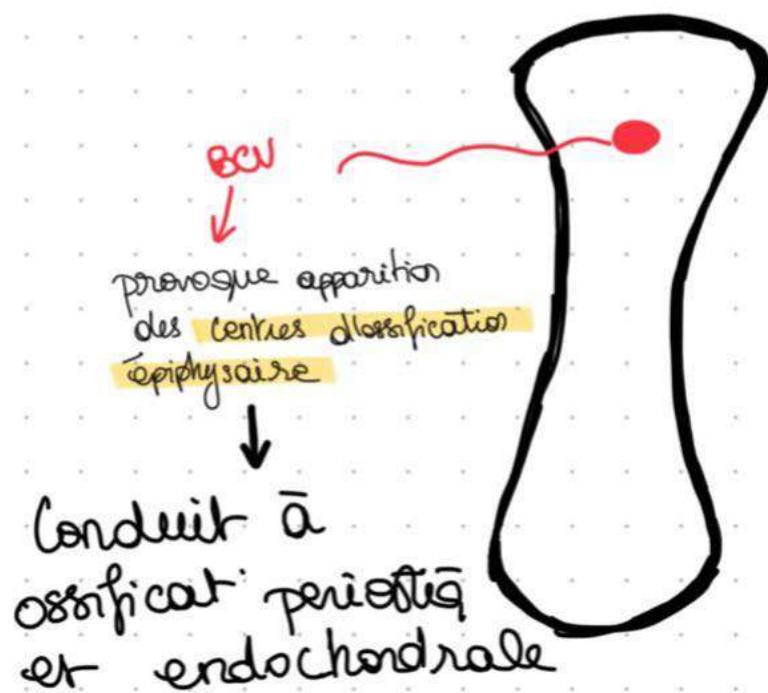
Autre FAÇON D'IMAGER



OSSIFICATION PÉRIOSTIQUE



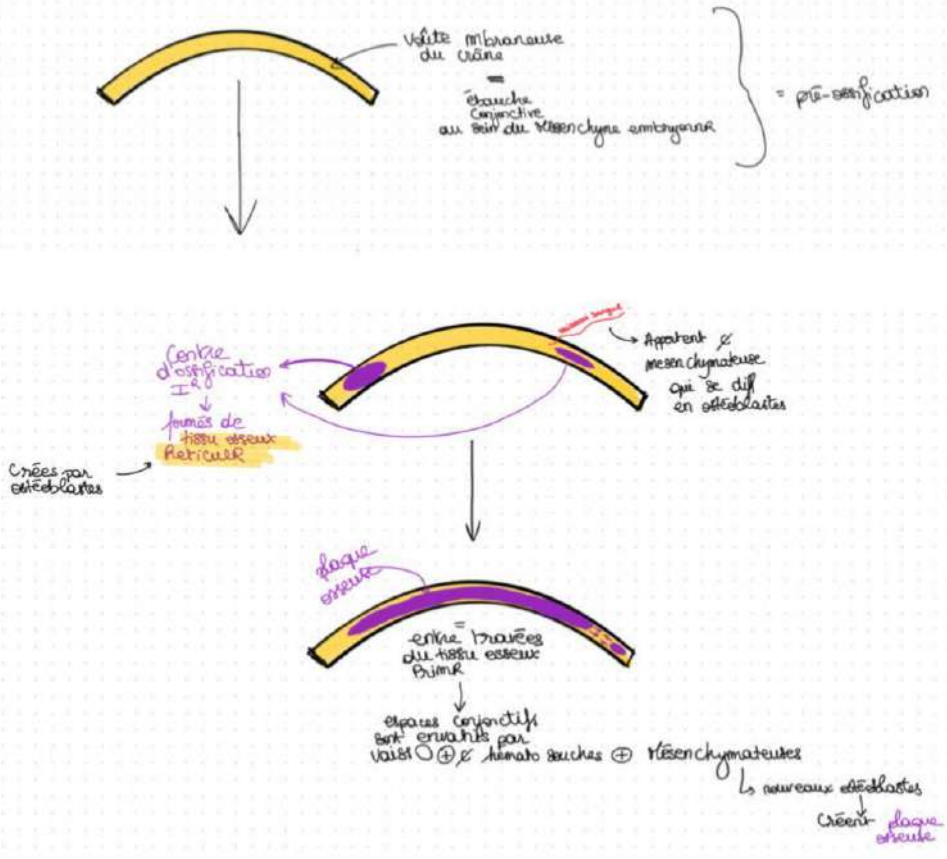
ÉPIPHYSE



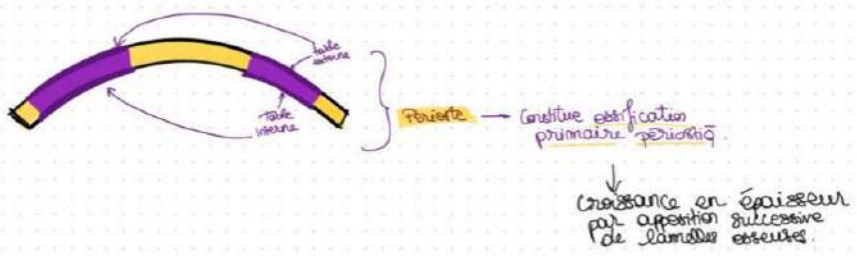
OSSIFICATION DU CRÂNE

OSSIFICATION I^R

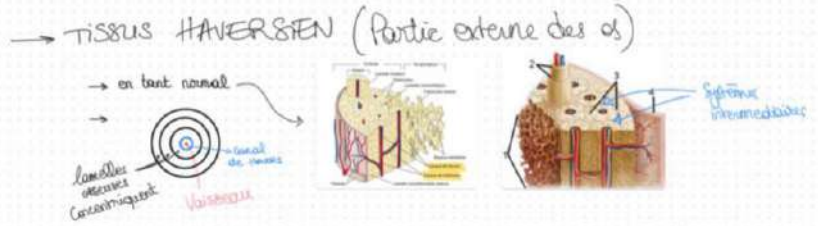
1. OSSIFICATION DE MEMBRANE



2. OSSIFICATION PÉRIOSTIQUE



OSSIFICATION II^R



TISSUS TRABÉCULAIRE (Partie centrale (médullaire) de l'os)
Le même principe que tissu Haversien