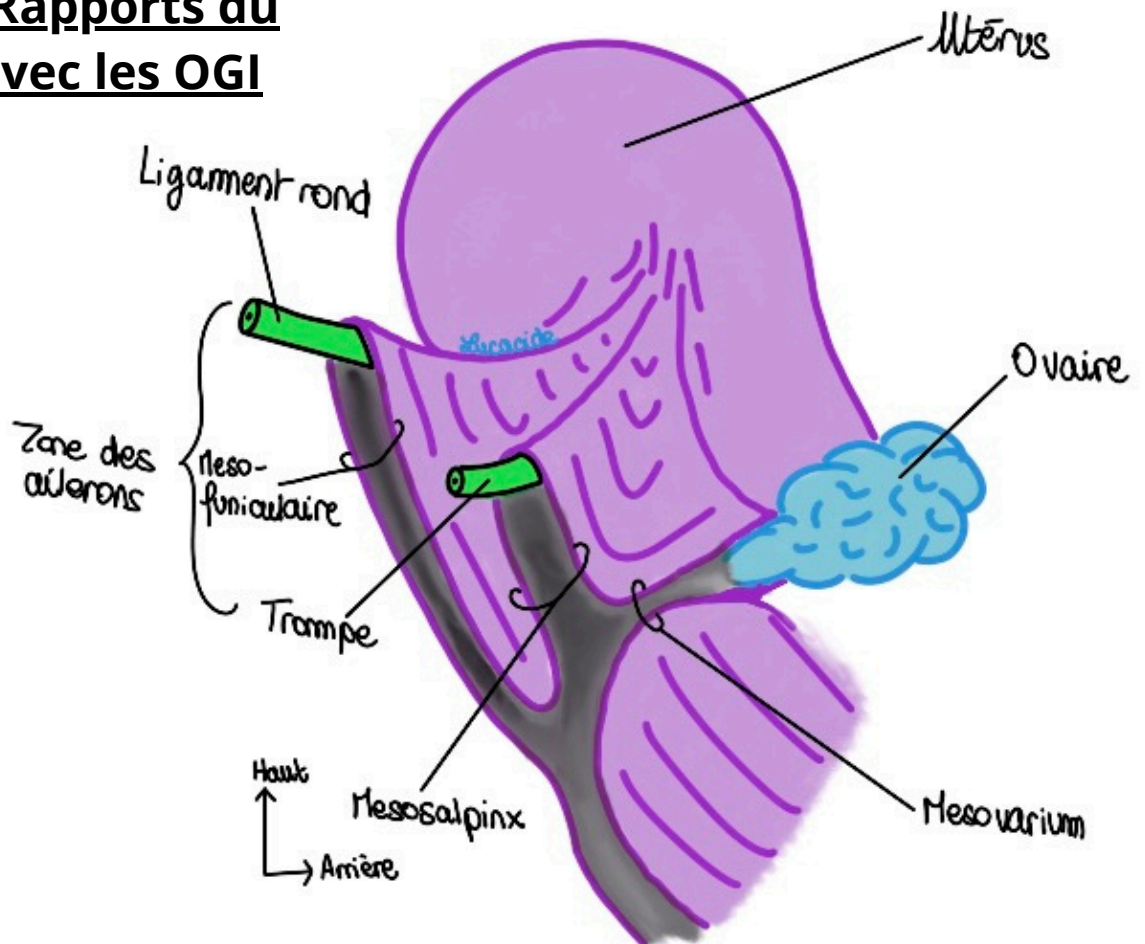


Schéma 1 : Appareil génital féminin

Schéma 2 : Rapports du Péritoine avec les OGI



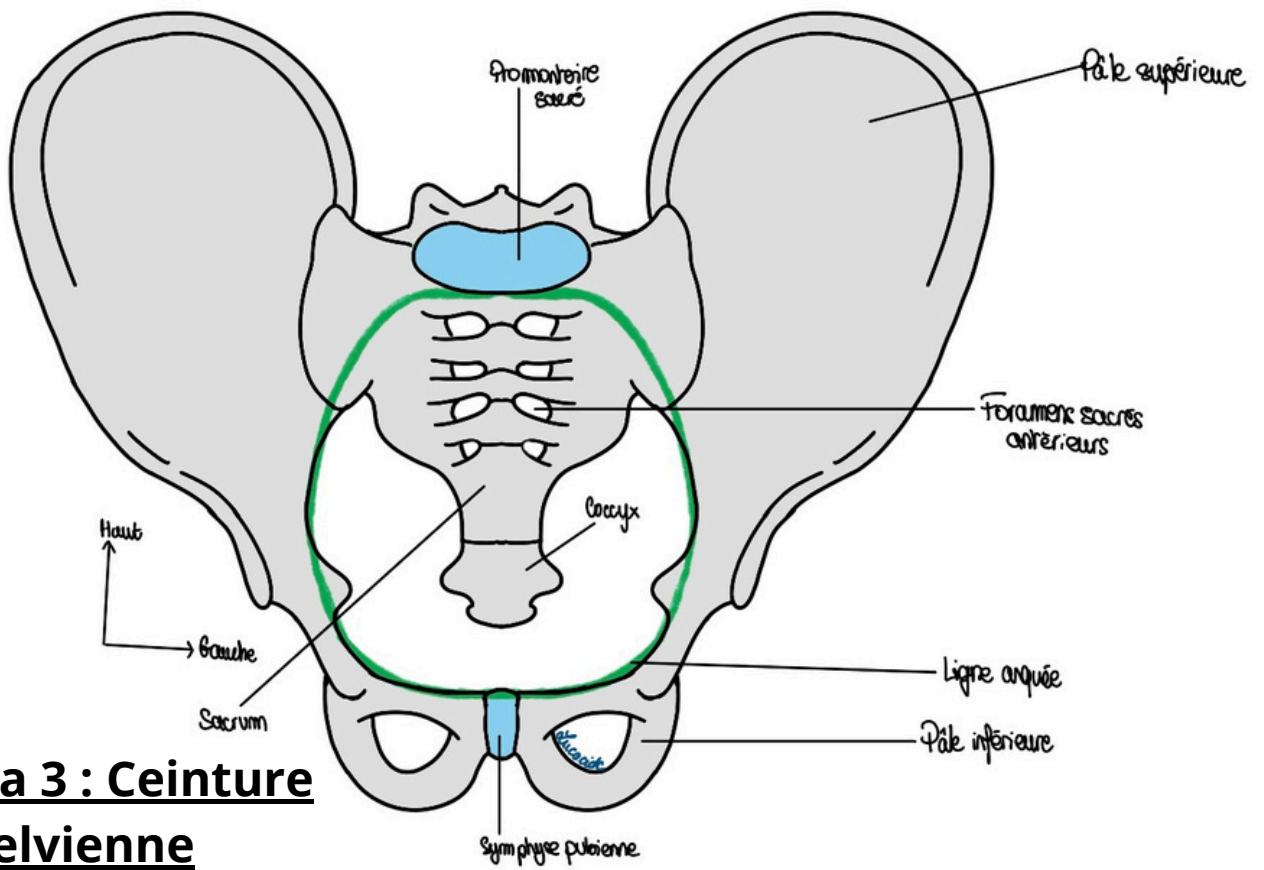


Schéma 3 : Ceinture pelvienne

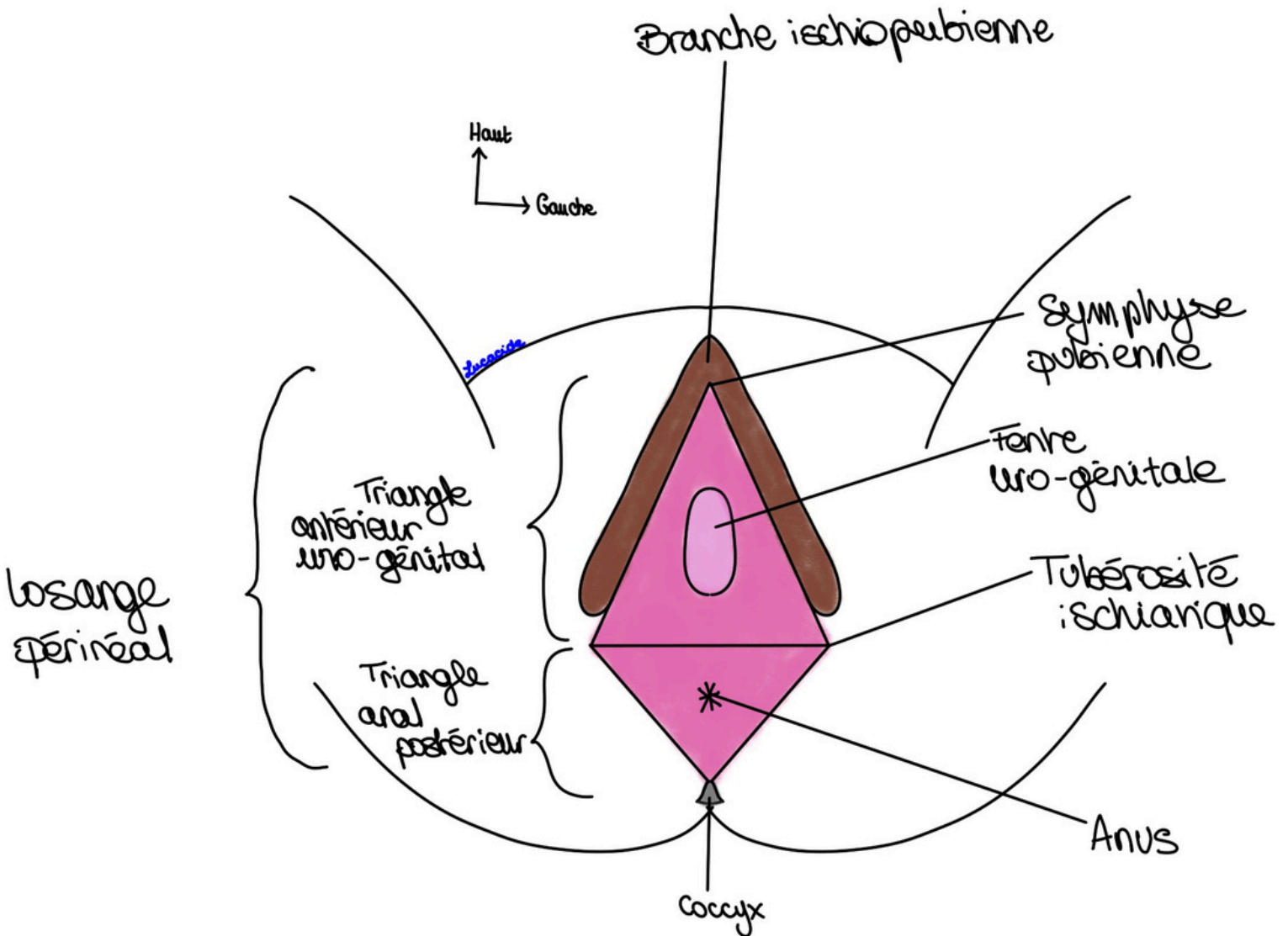


Schéma 4 : Vision schématique des OGE

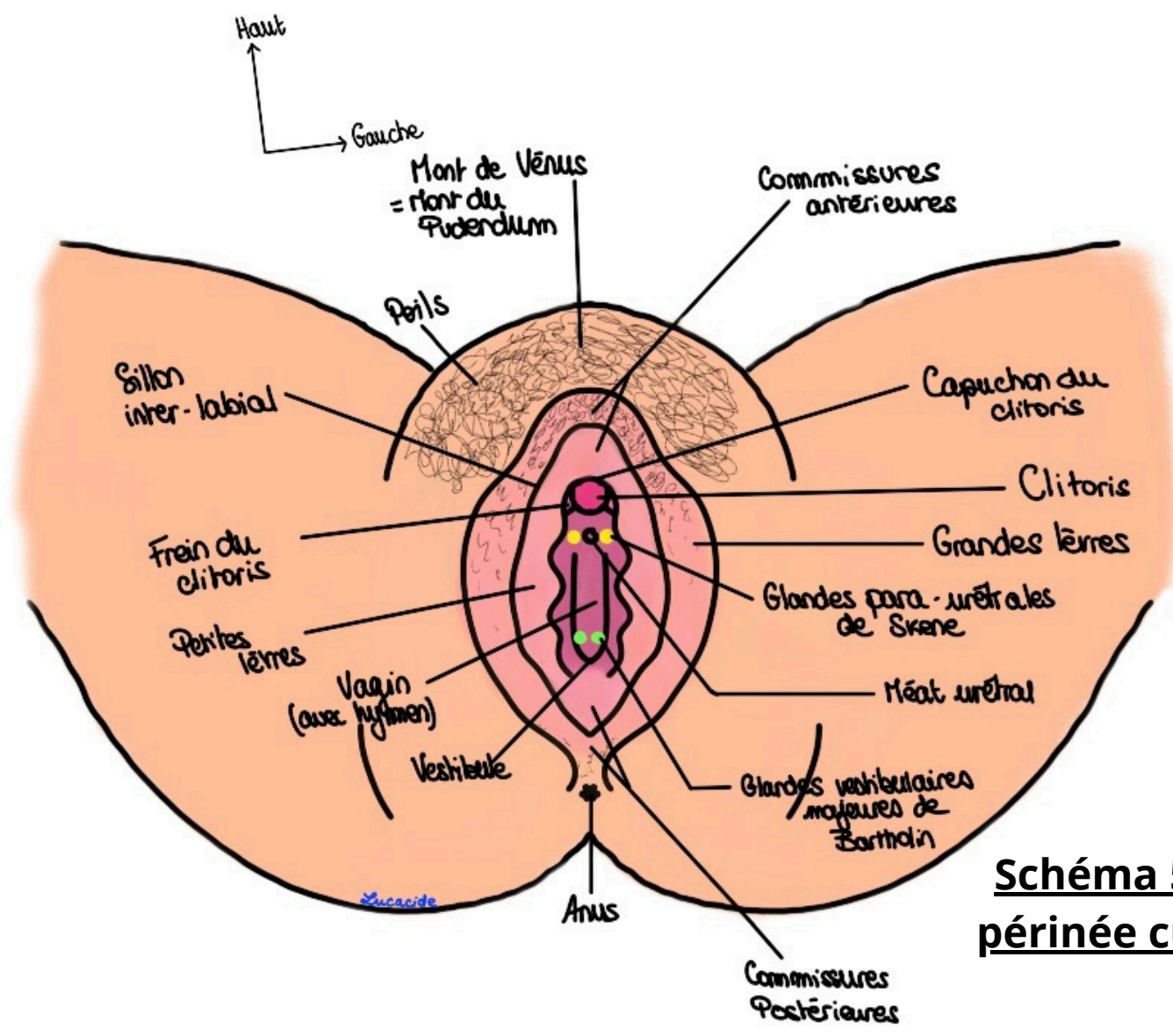
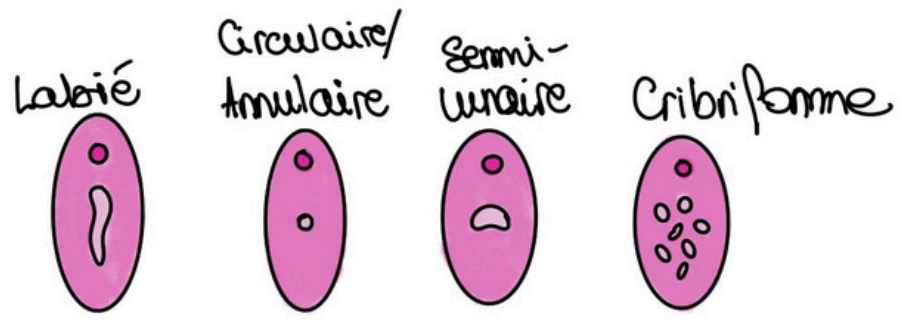


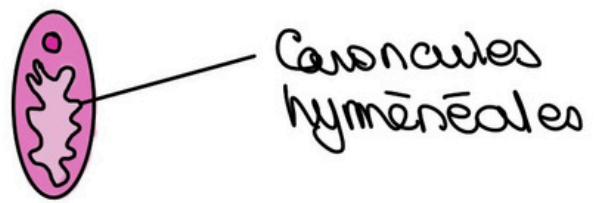
Schéma 5 : Le périnée cutané

Schéma 6 : Les différentes formes d'hymen

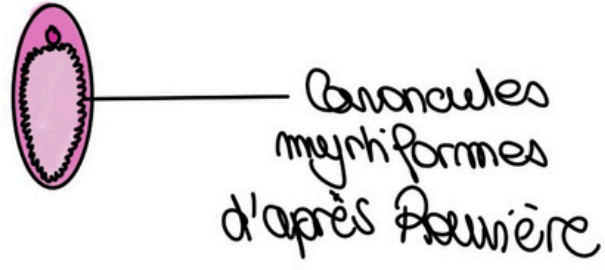
Hymen vierge



Hymen après pénétration



Hymen après accouchement



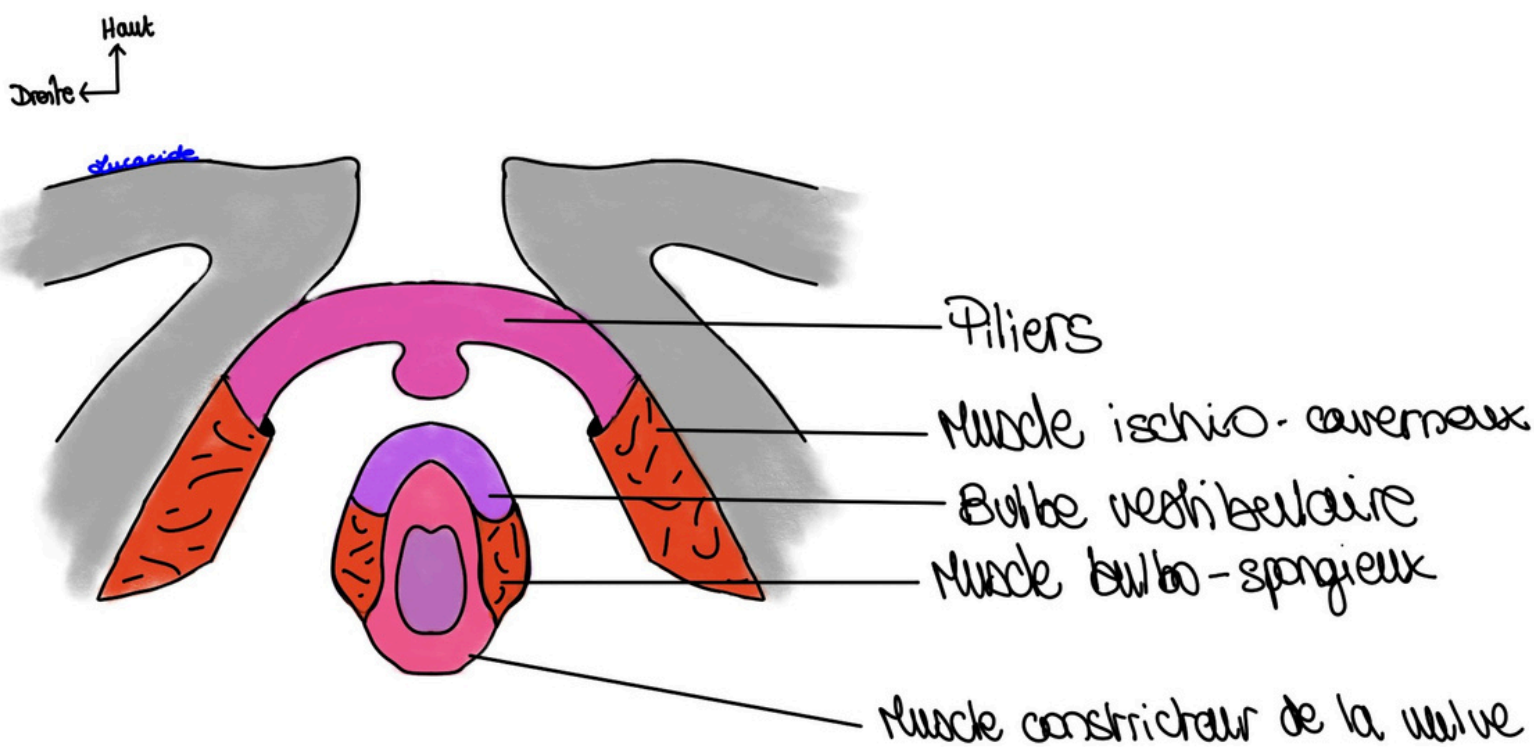


Schéma 7 : Les corps érectiles et leurs muscles en cornets

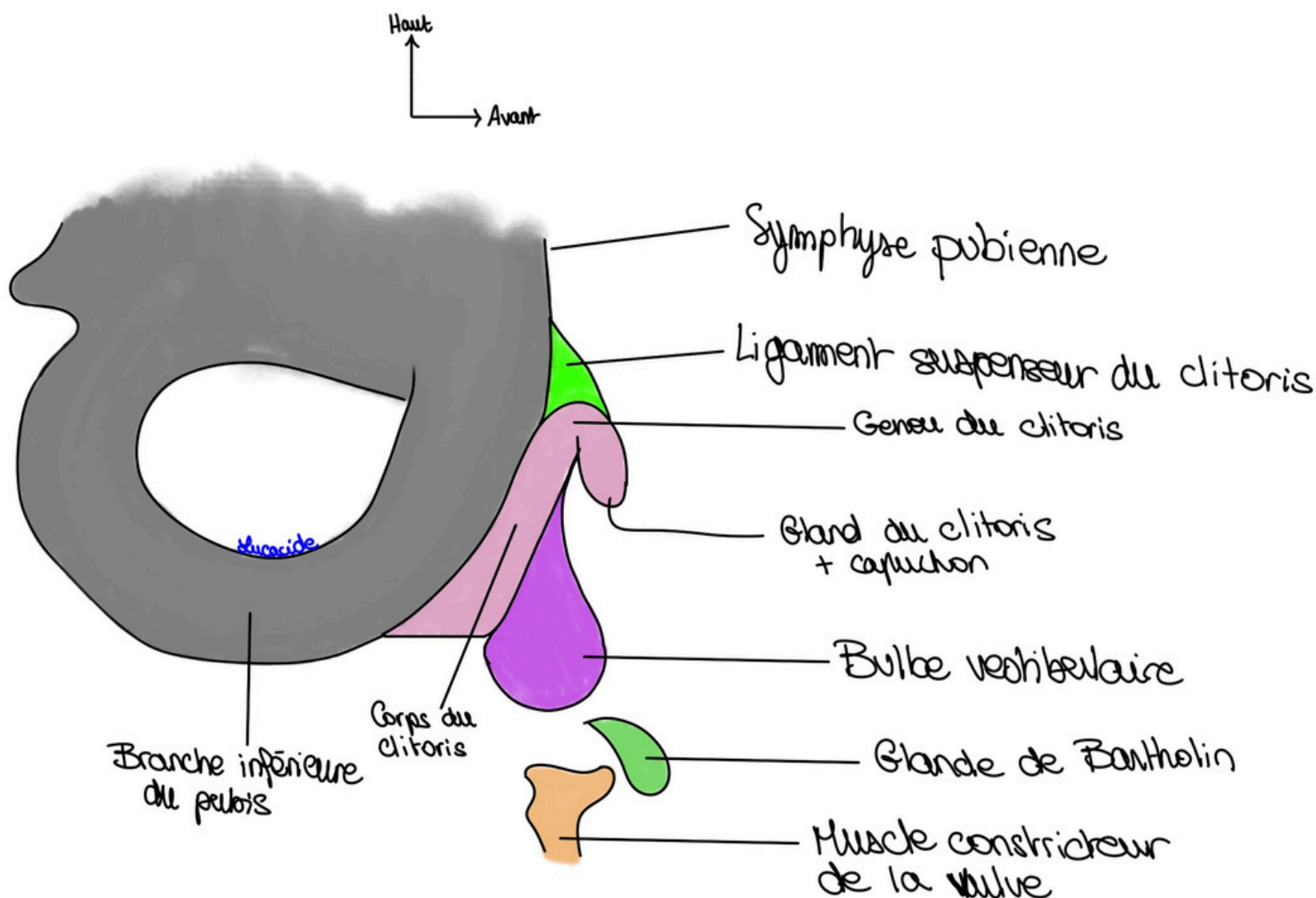


Schéma 8 : Les corps érectiles en vue de profil

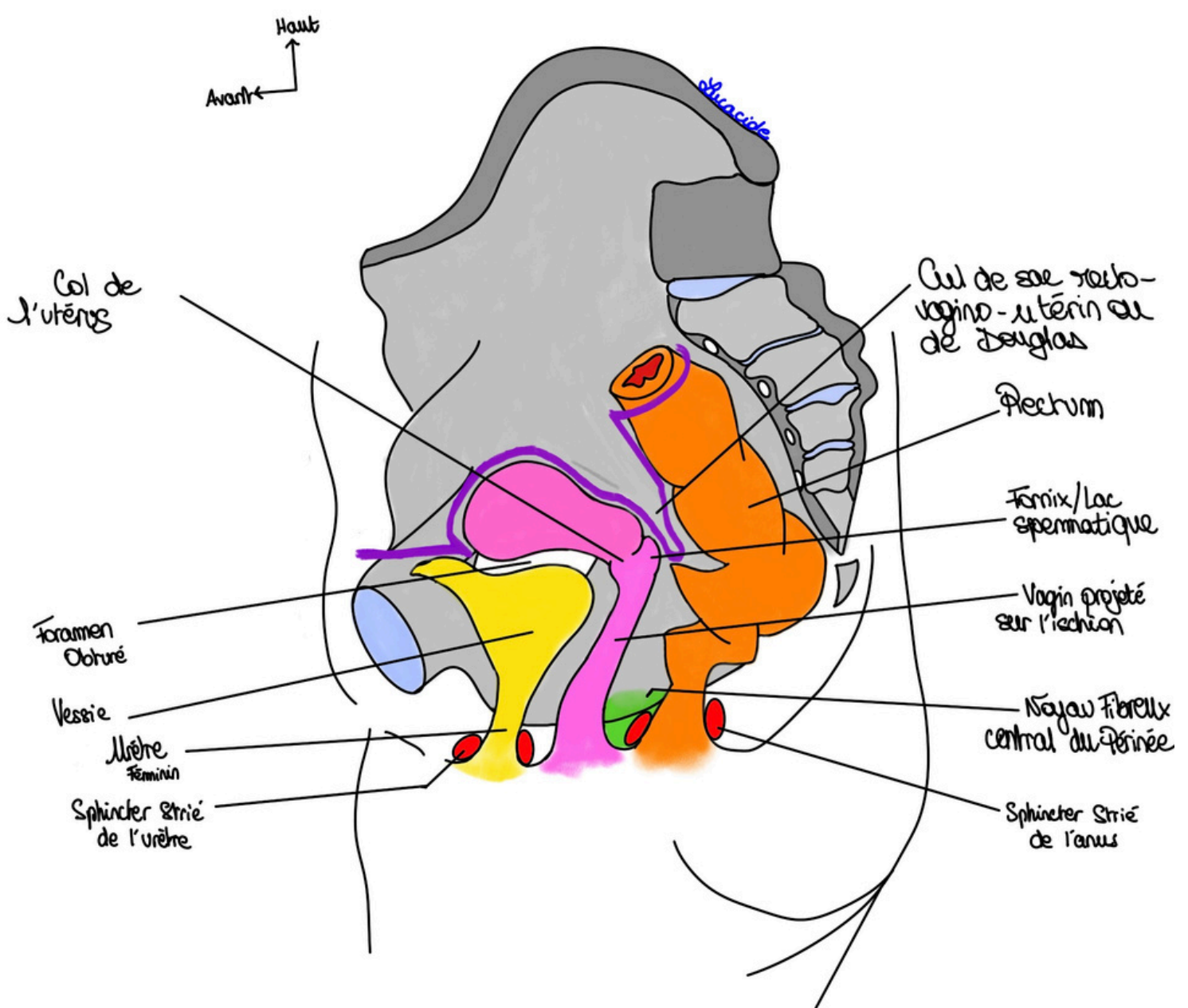
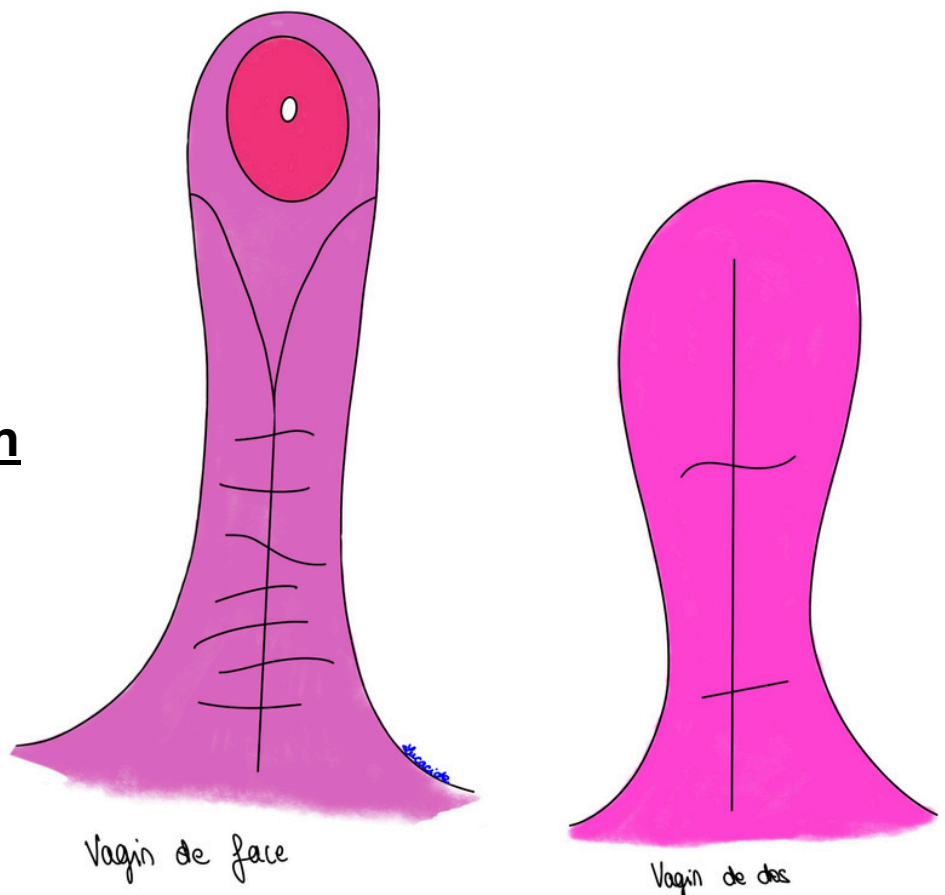


Schéma 9 : Coupe sagittale du Petit Bassin de la femme

Schéma 10 : Le vagin



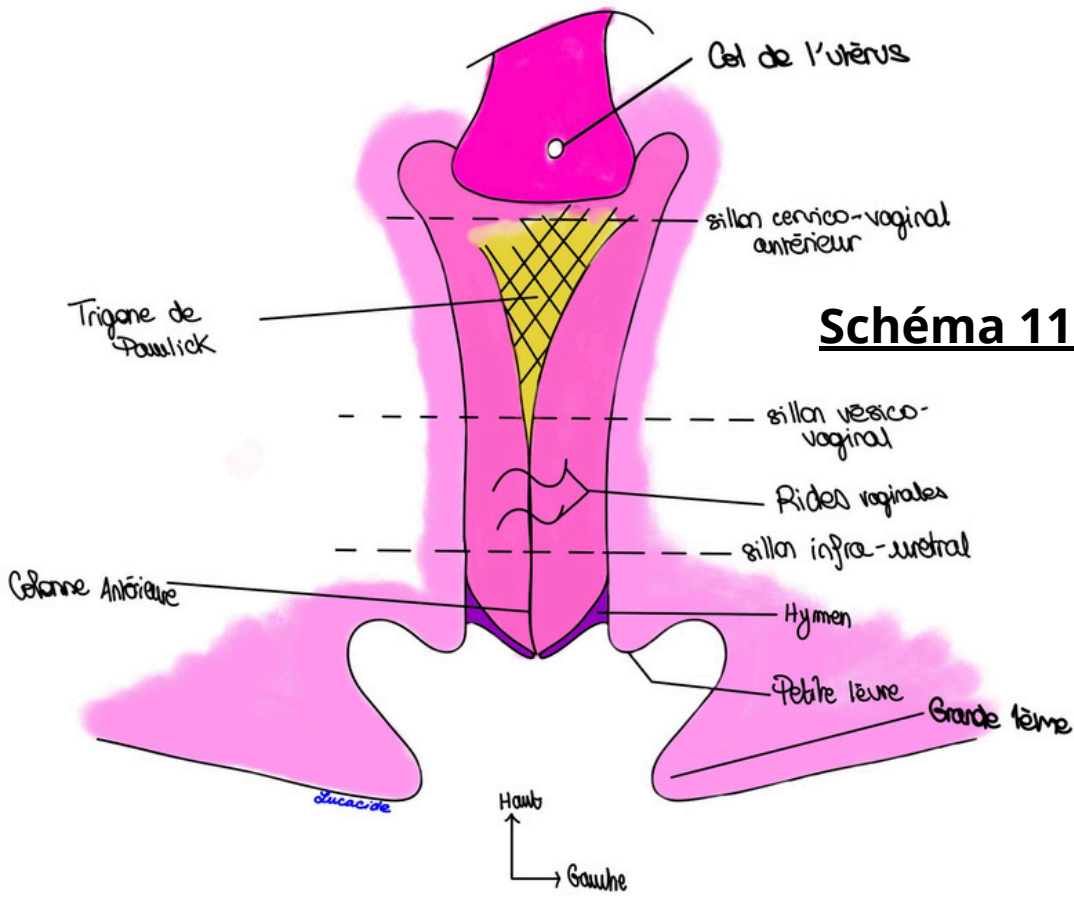


Schéma 11 : Le vagin (bis)

Schéma 12 : L'utérus et les trompes

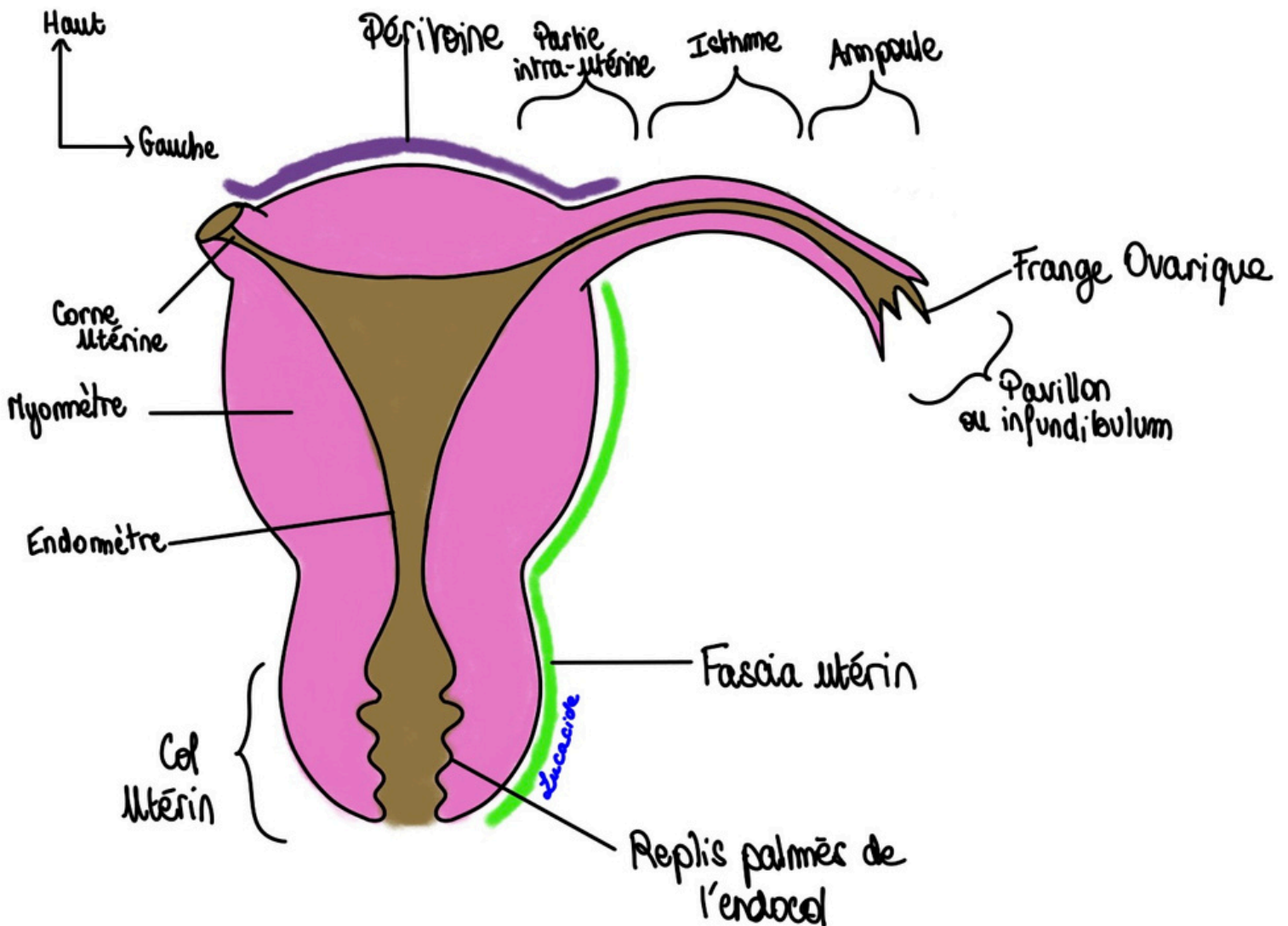




Schéma 13 : Les différentes formes de col utérin

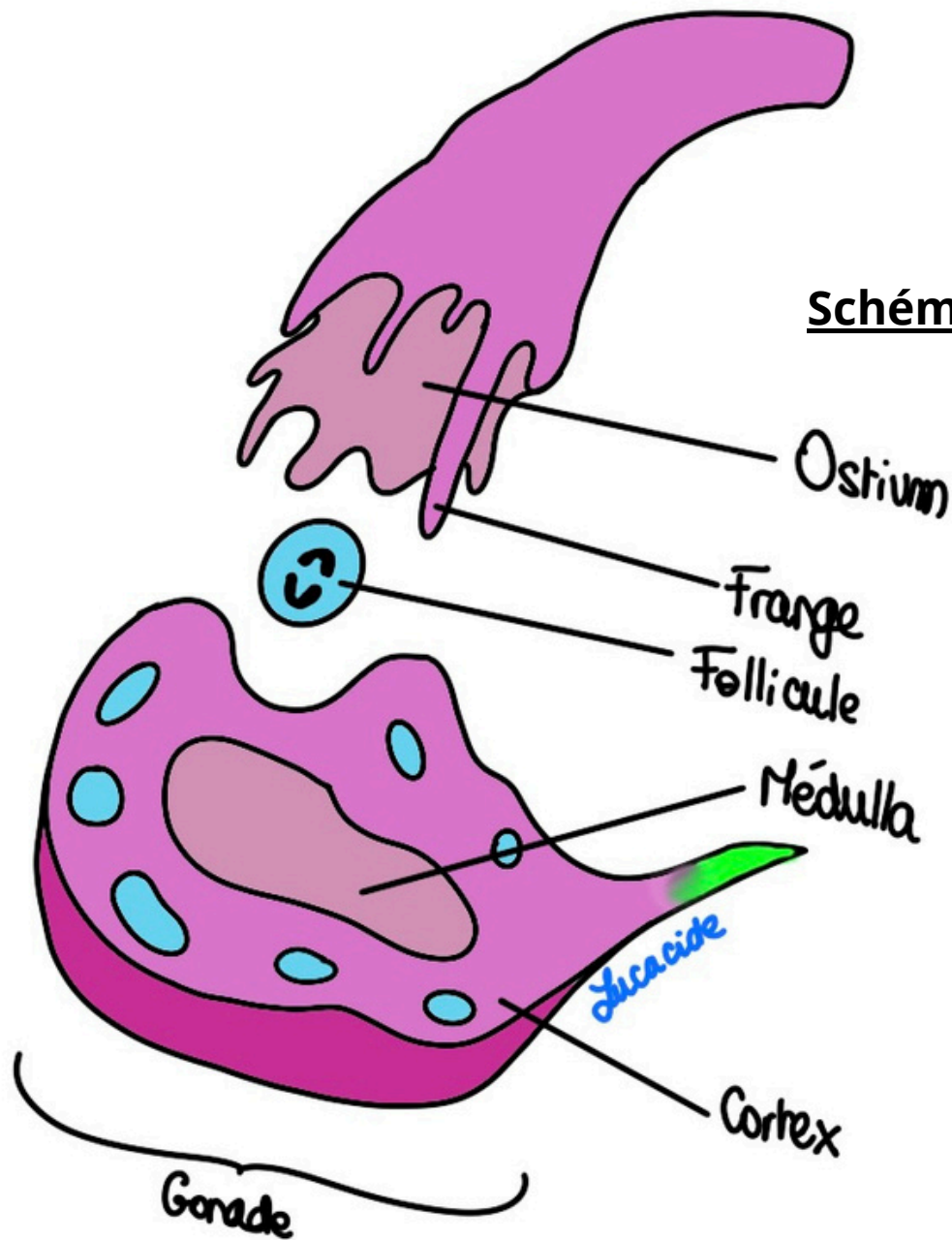


Schéma 14 : L'ovaire

Schéma 17 : Angles et cul-de-sac

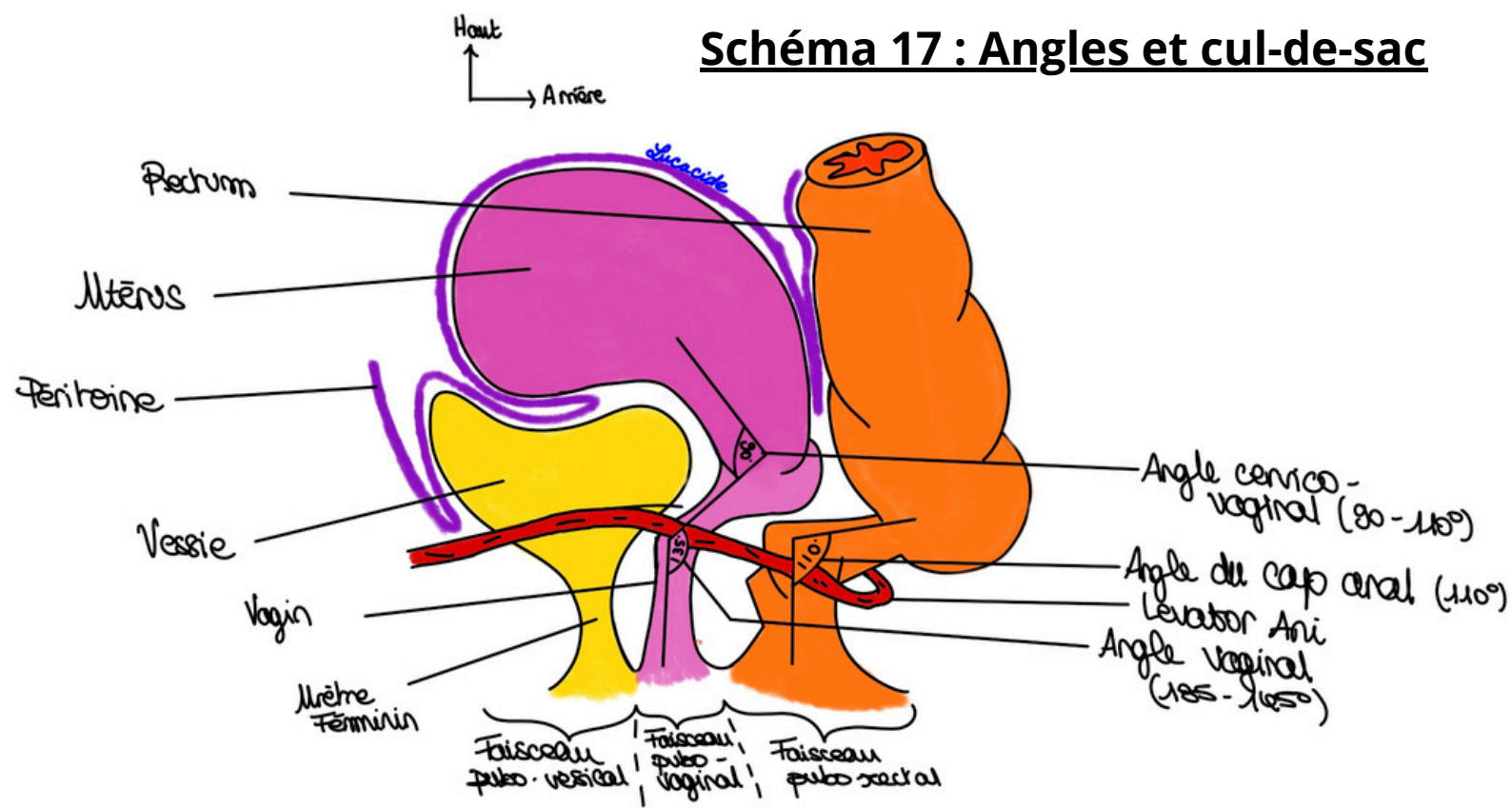
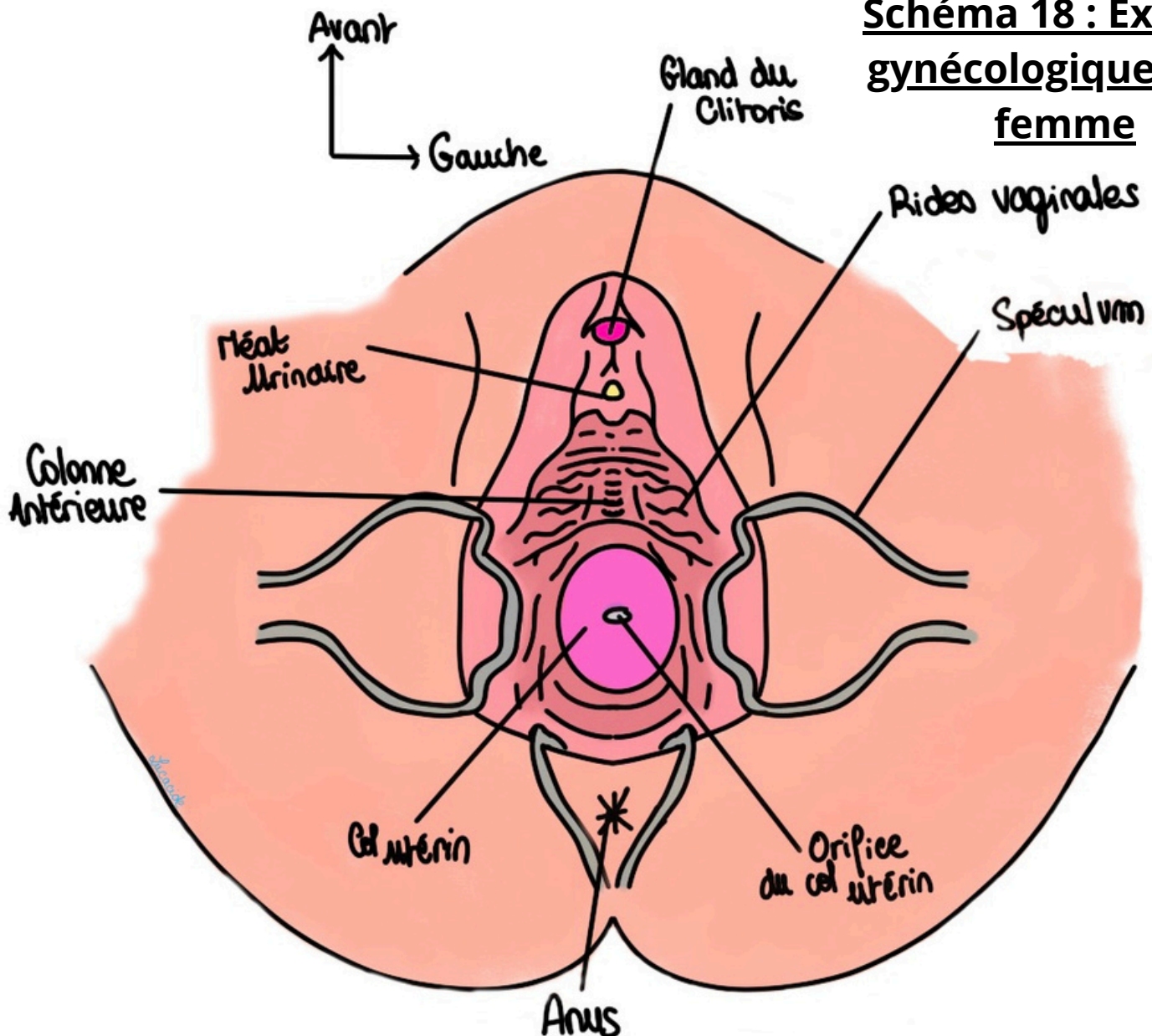


Schéma 18 : Examen gynécologique de la femme



	Col Sain	Col malade (biopste)
<i>Lugol</i> Acide Acétique		
Lugol		

Schéma 19 : Colorations du col utérin