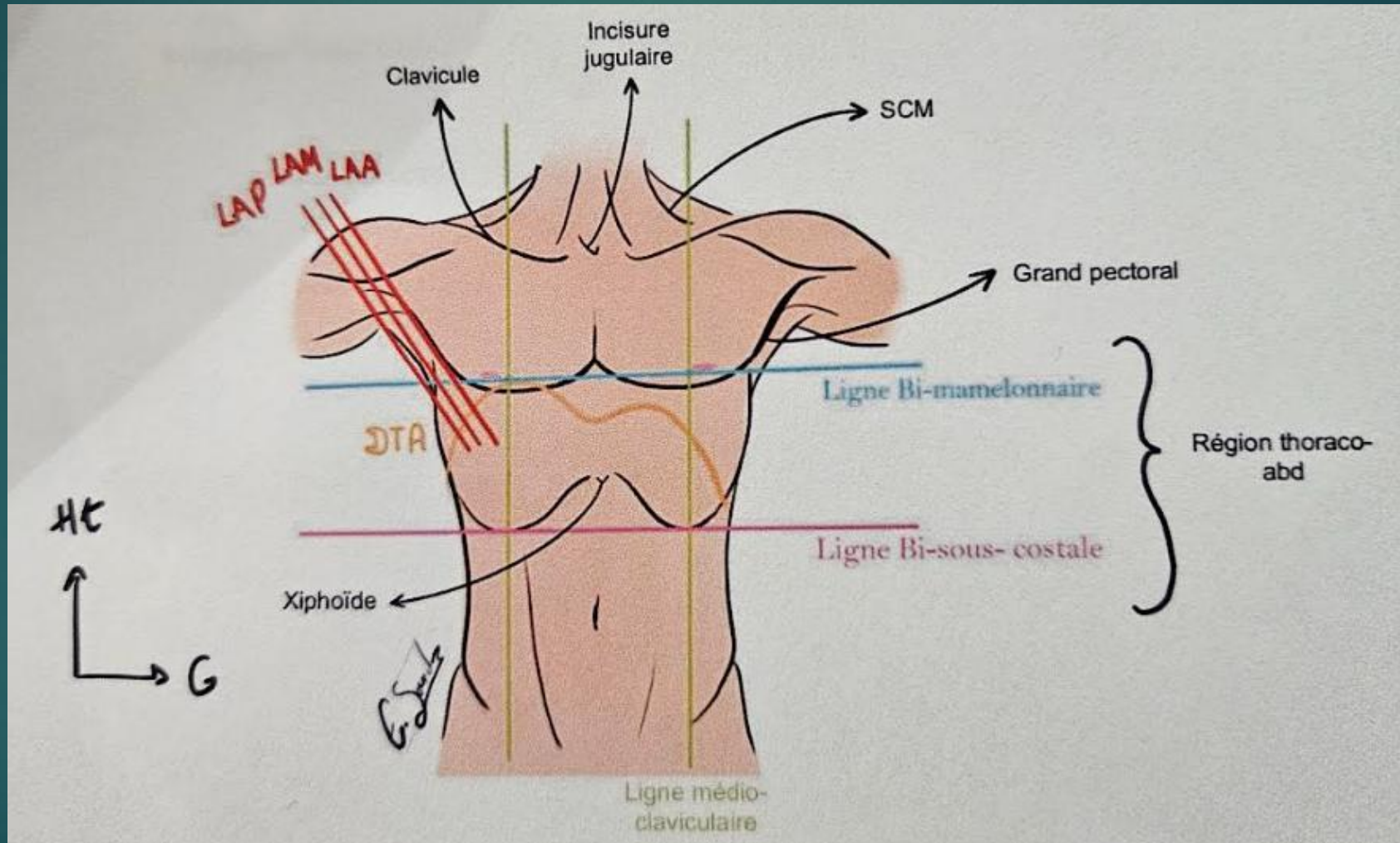


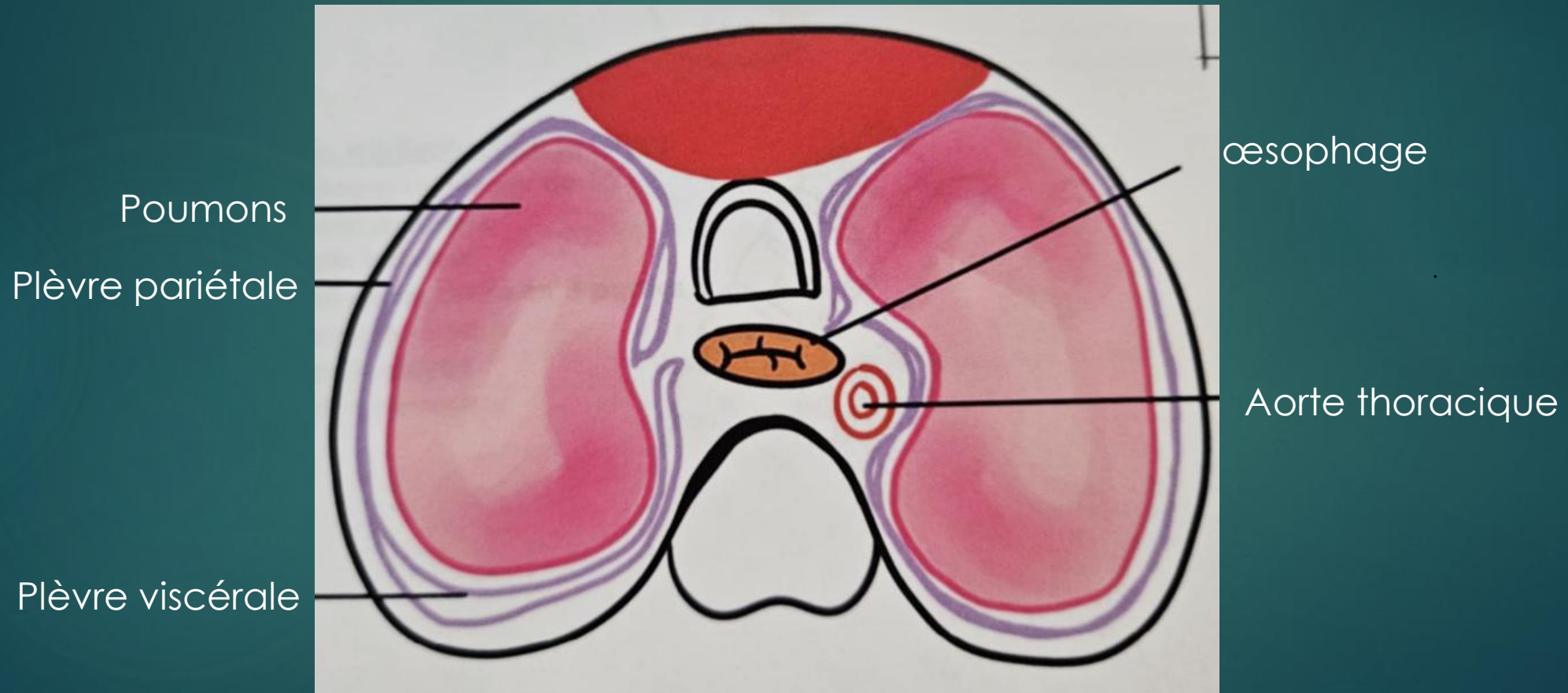
Anatomie et gestes

APPAREIL RESPIRATOIRE

Généralités

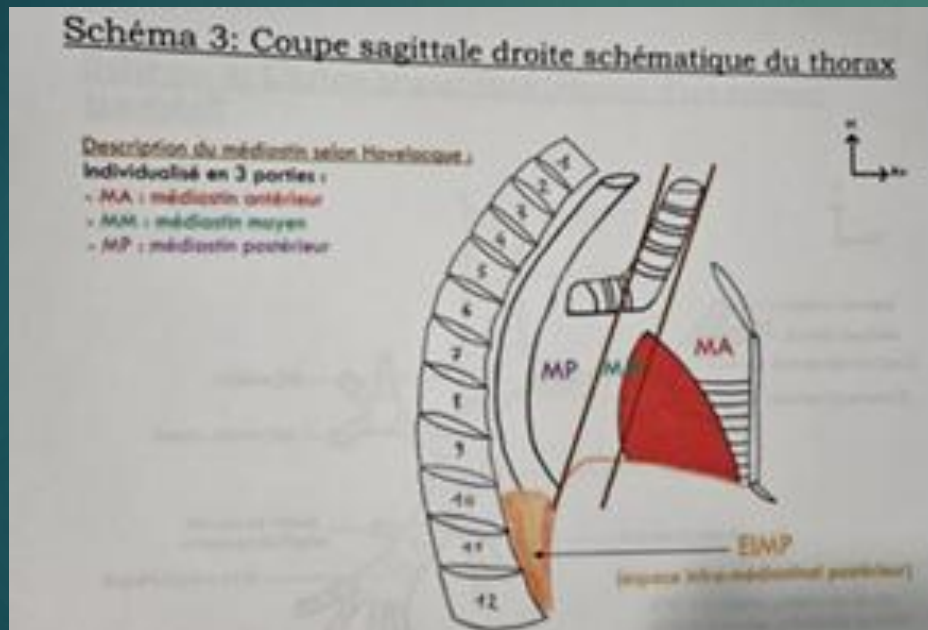


Coupe transversale du thorax

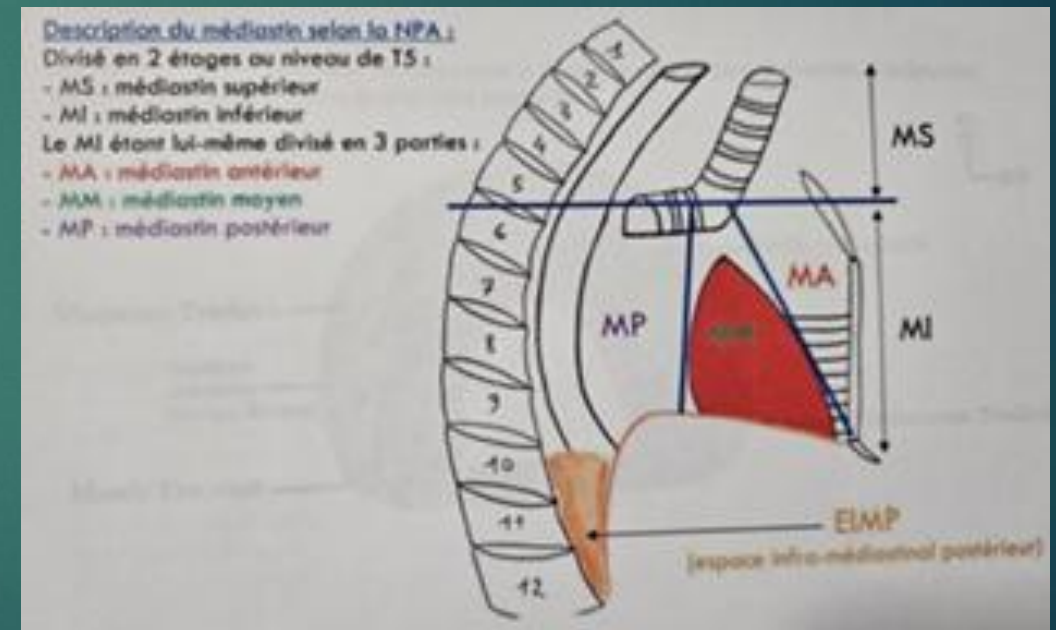


Coupe sagittale du thorax et médiastins

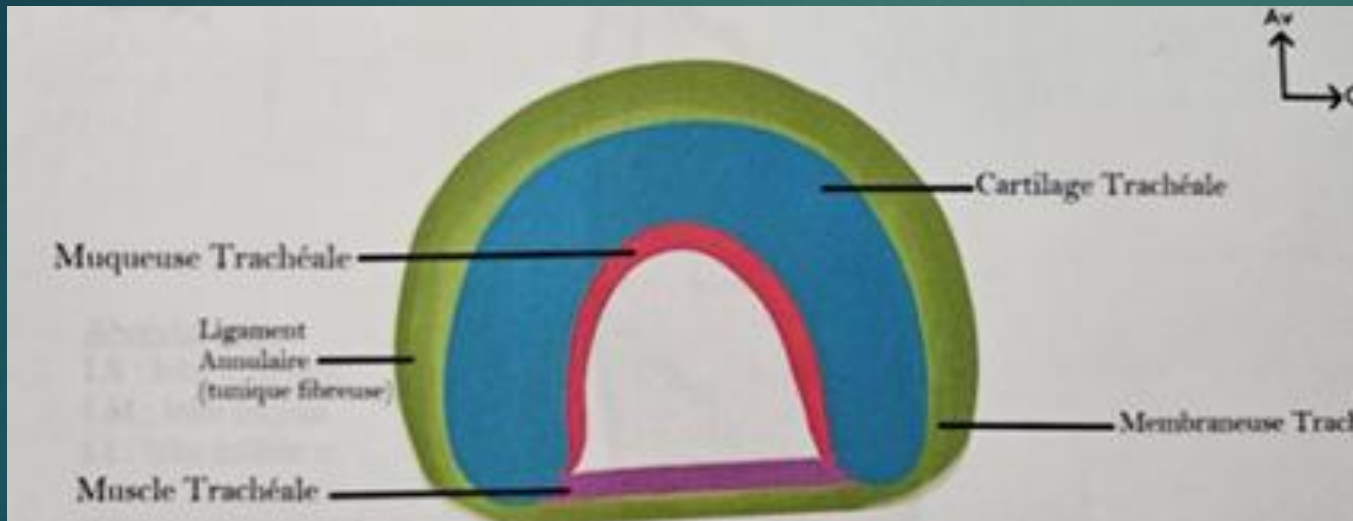
Classification selon Hovelacque (trachée)



Classification selon la nomenclature internationale (cœur)

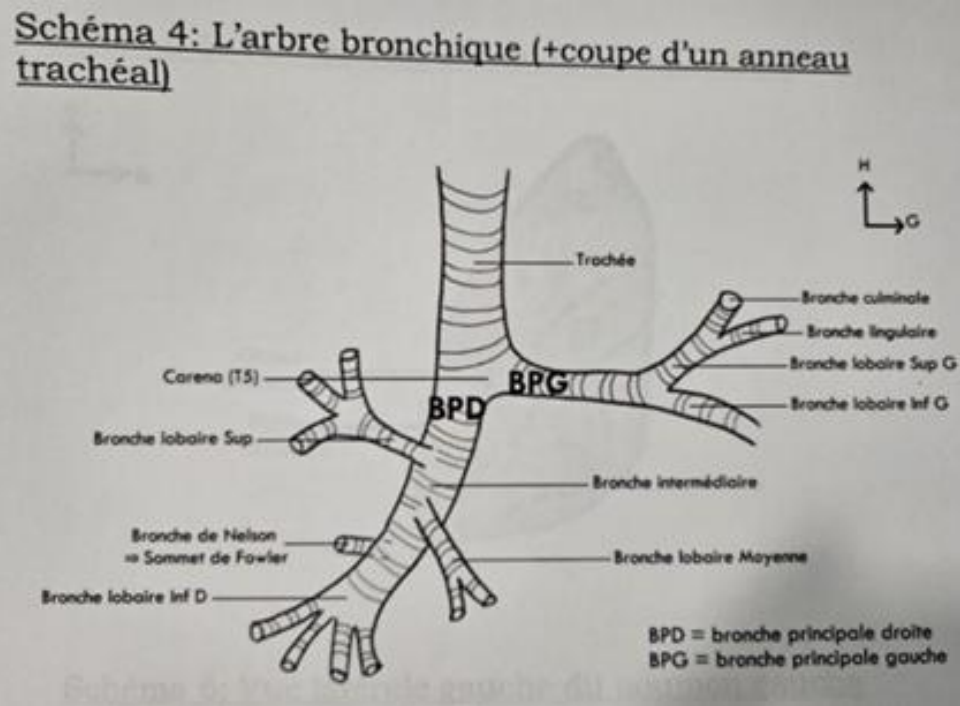


Appareil pleuro-pulmonaire

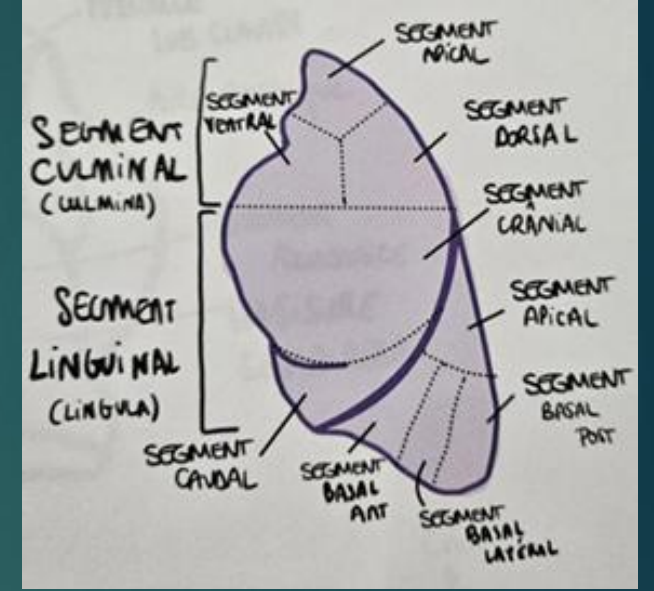
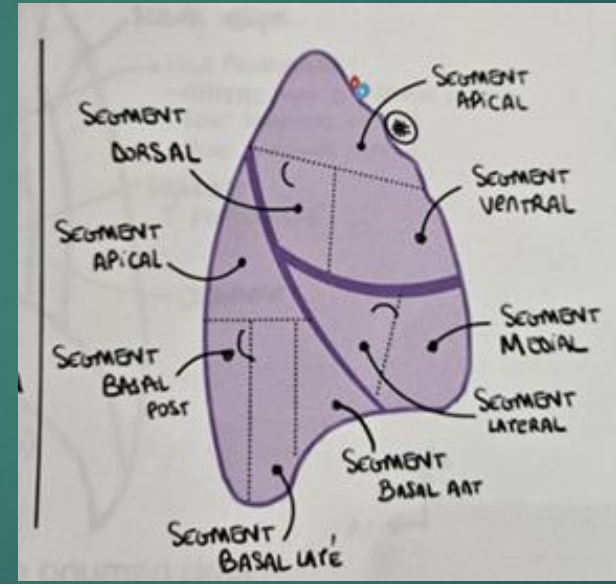


- Cartilage en forme de cheval ouvert vers l'arrière
- Bifurcation trachéale en regard de Th5

Arbre pulmonaire



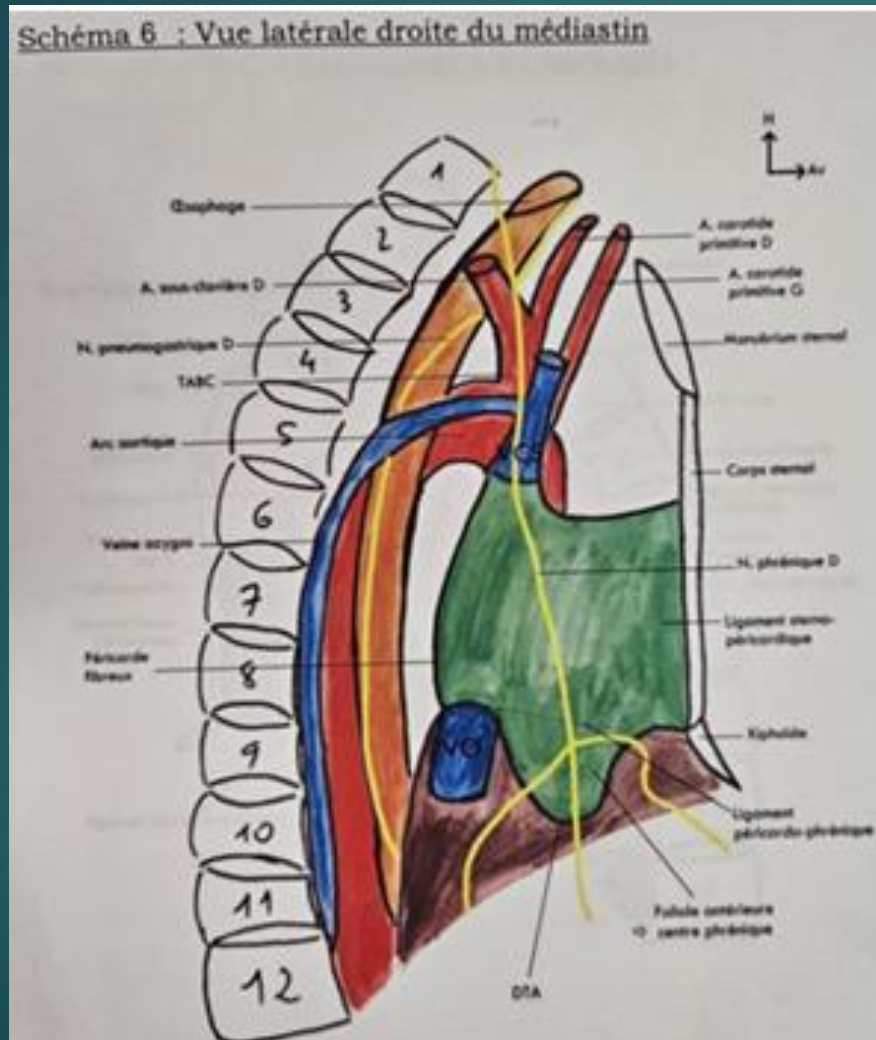
Poumon droit:
→ 3 lobes
→ 2 scissures



Poumon gauche:
→ 2 lobes
→ 1 scissure

→ Asymétrie des bronches entre la partie gauche et la partie droite

Vue latérale droite du médiastin:



Projections:

Th2 → incisure jugulaire du sternum

Th4 → croise aorte, croise veine azygos, manubrium sternal

Th5 → bifurcation trachéale

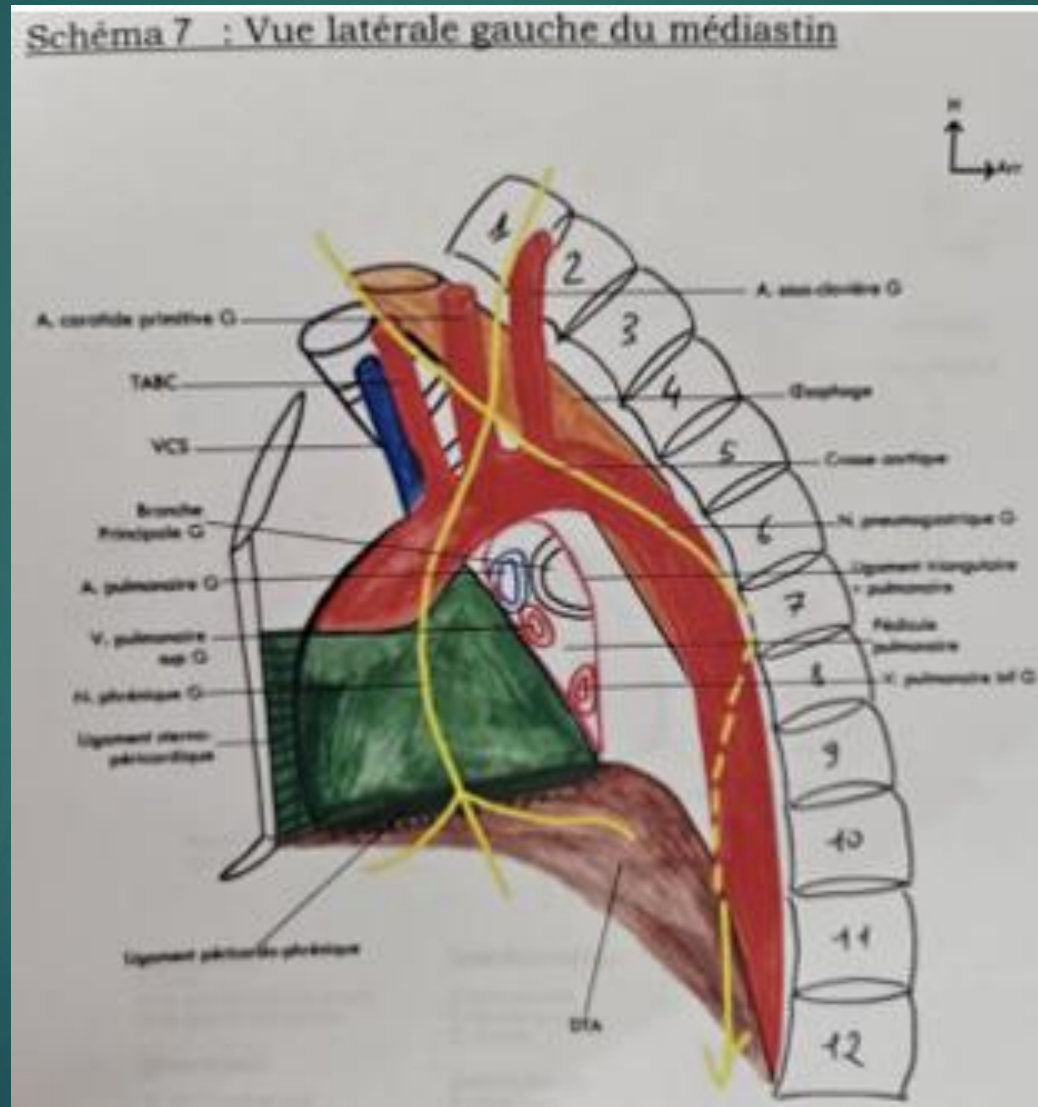
Th8 → Cavités cardiaques, appendice xiphoïde

Th9 → hiatus VCI

Th10 → hiatus œsophagien

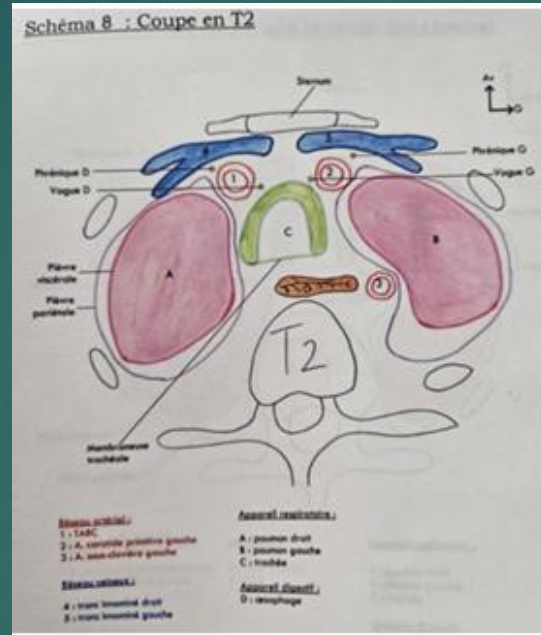
Th12 → hiatus aortique

Vue latérale gauche du médiastin:

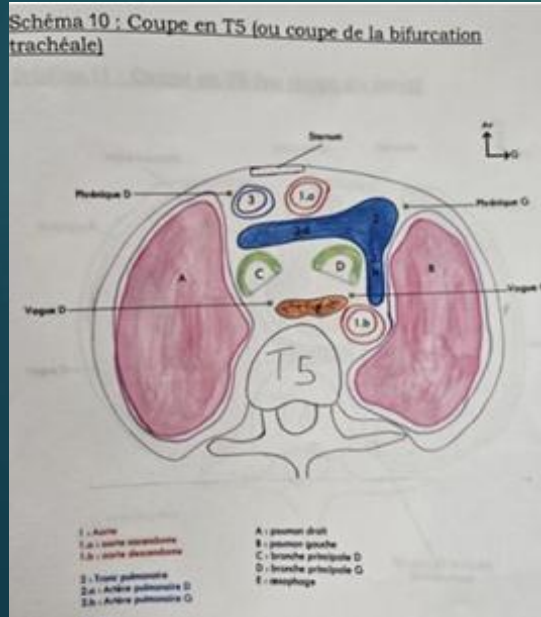
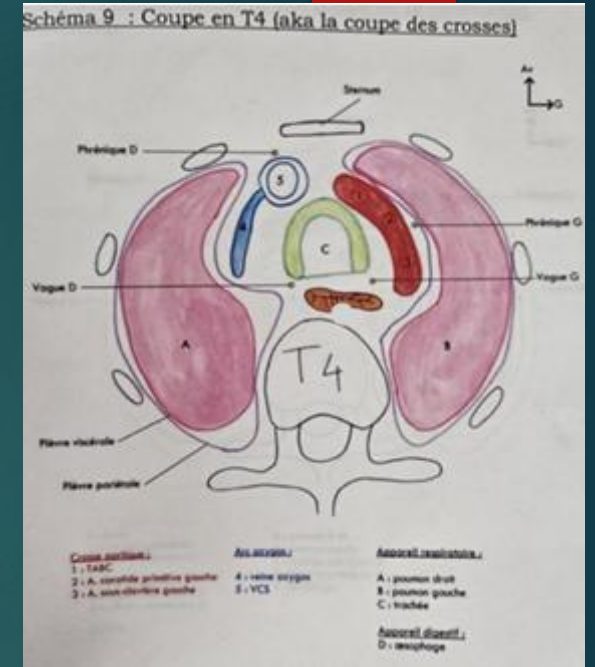


Coupes du thorax:

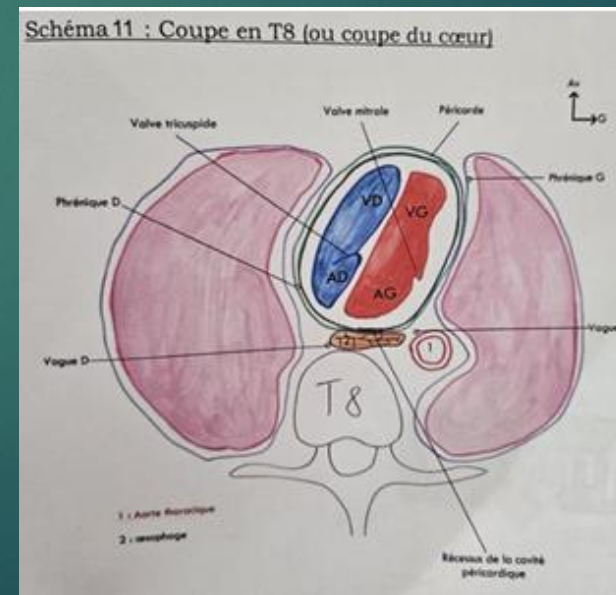
► Coupe en Th2



Coupe en Th4



Coupe en Th5



Coupe en Th8

FIN