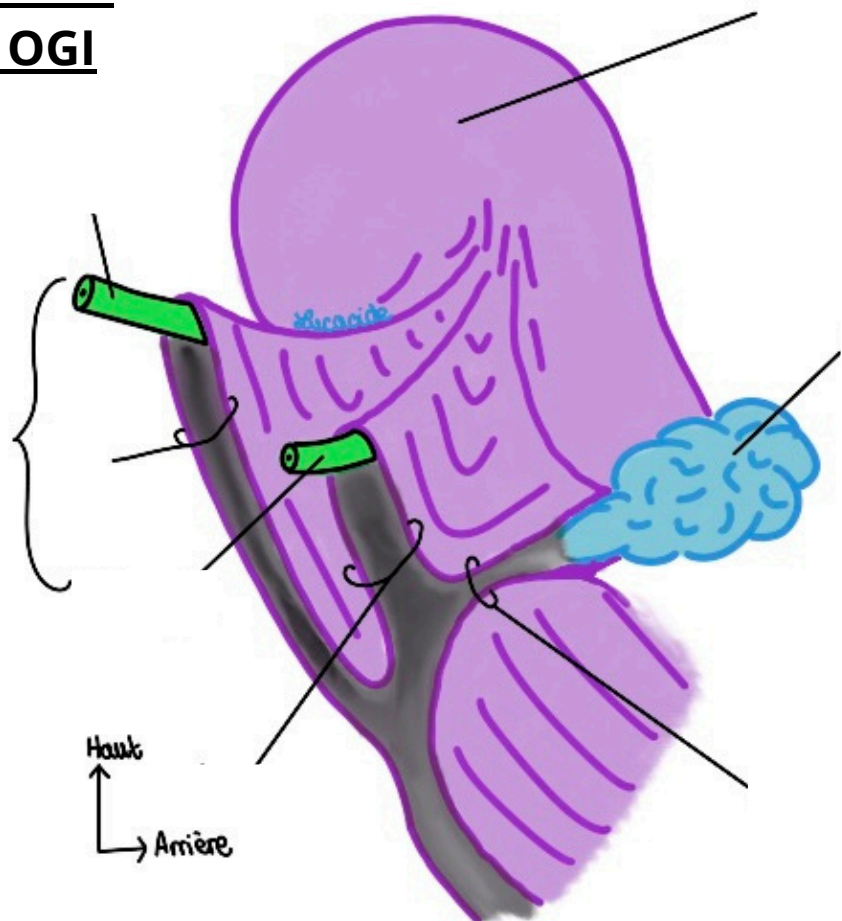
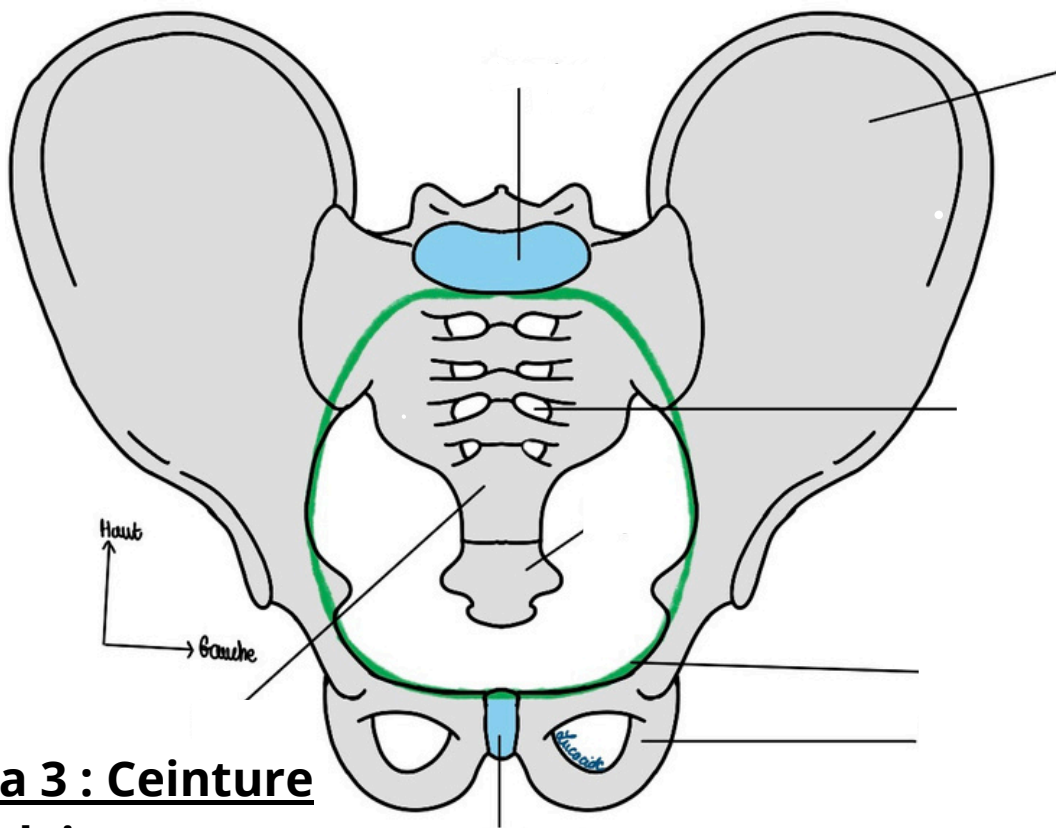


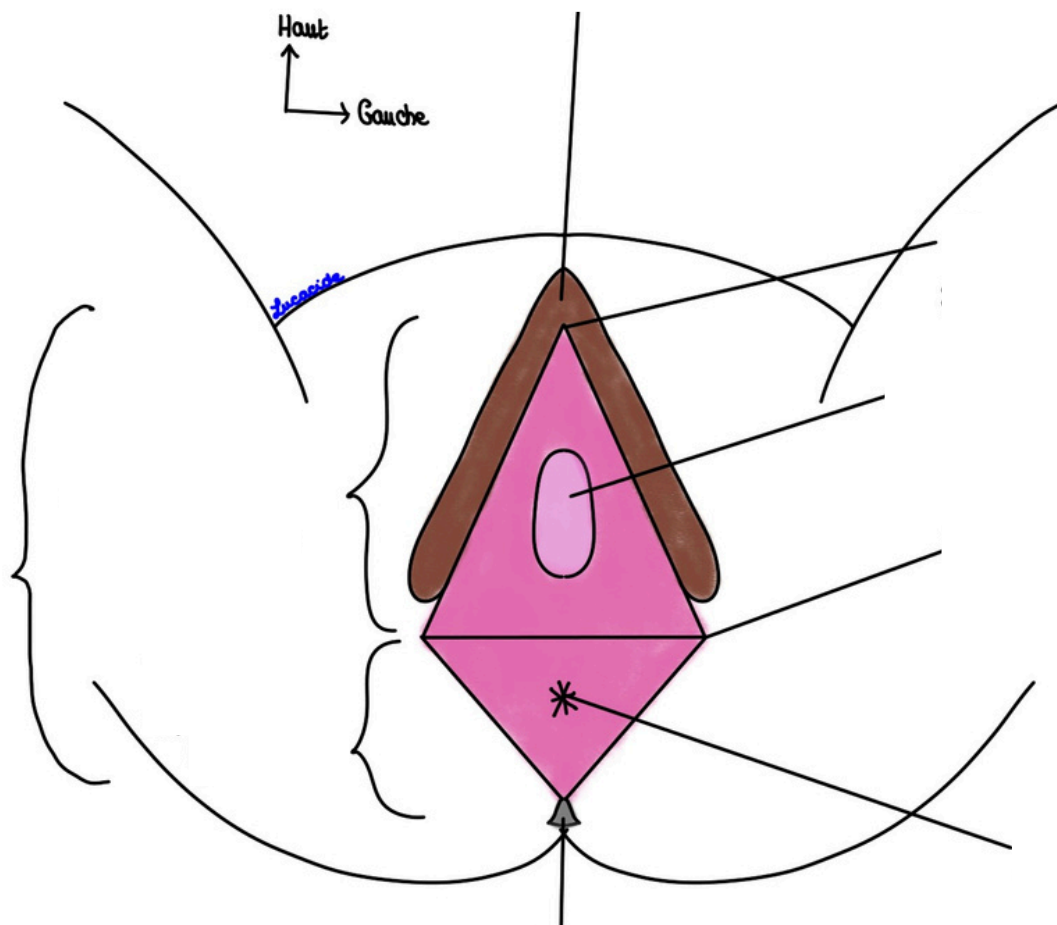
**Schéma 1 : Appareil génital féminin**

**Schéma 2 : Rapports du Péritoine avec les OGI**



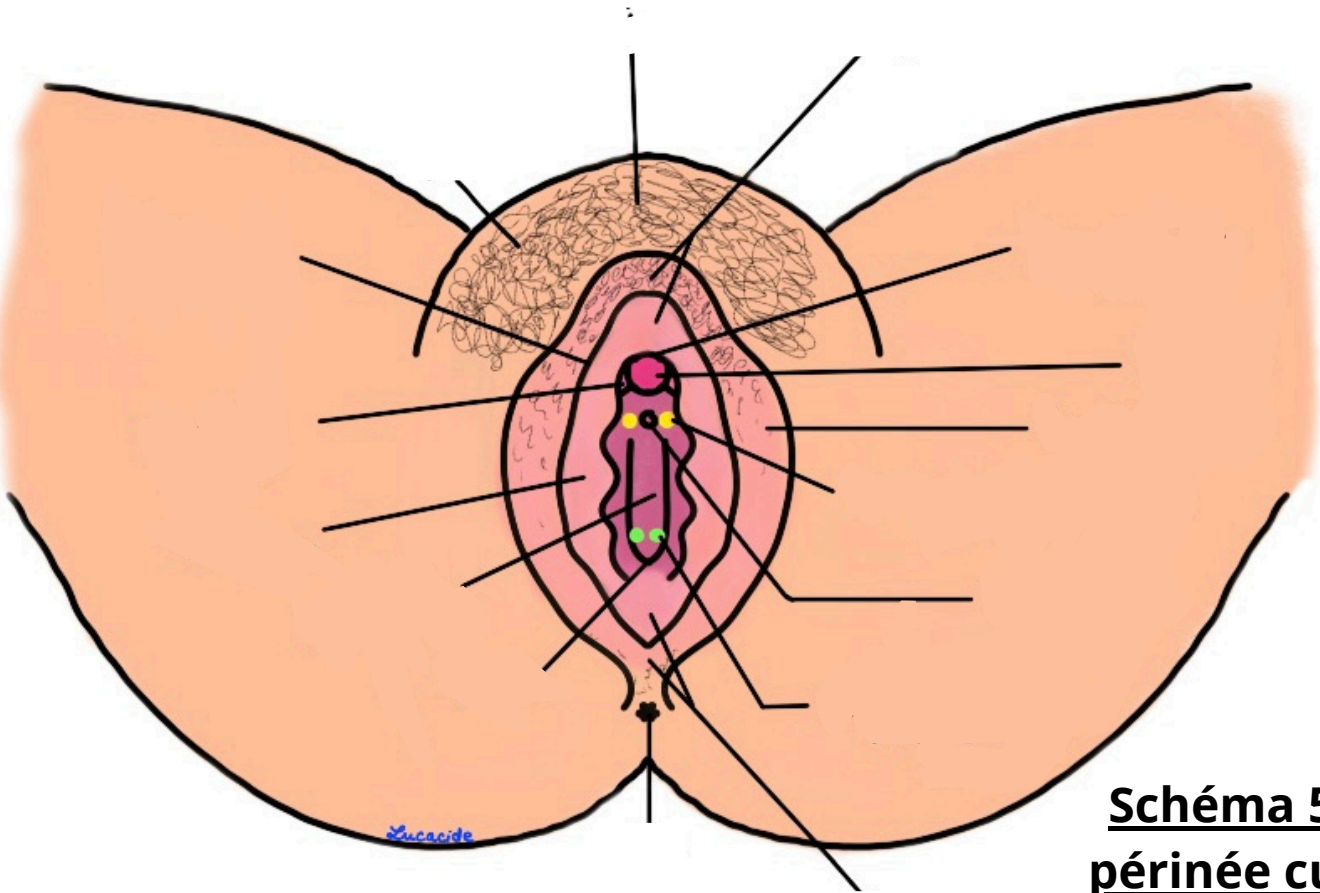


**Schéma 3 : Ceinture pelvienne**



**Schéma 4 : Vision schématique des OGE**

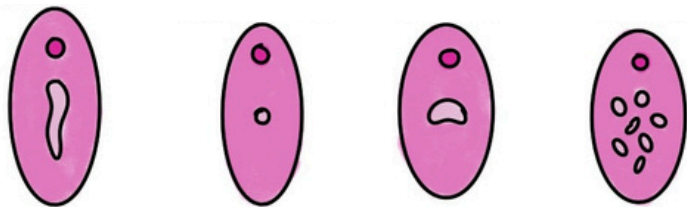
Haut  
→ Gauche



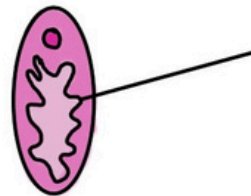
**Schéma 5 : Le périnée cutané**

**Schéma 6 : Les différentes formes d'hymen**

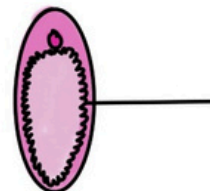
Hymen

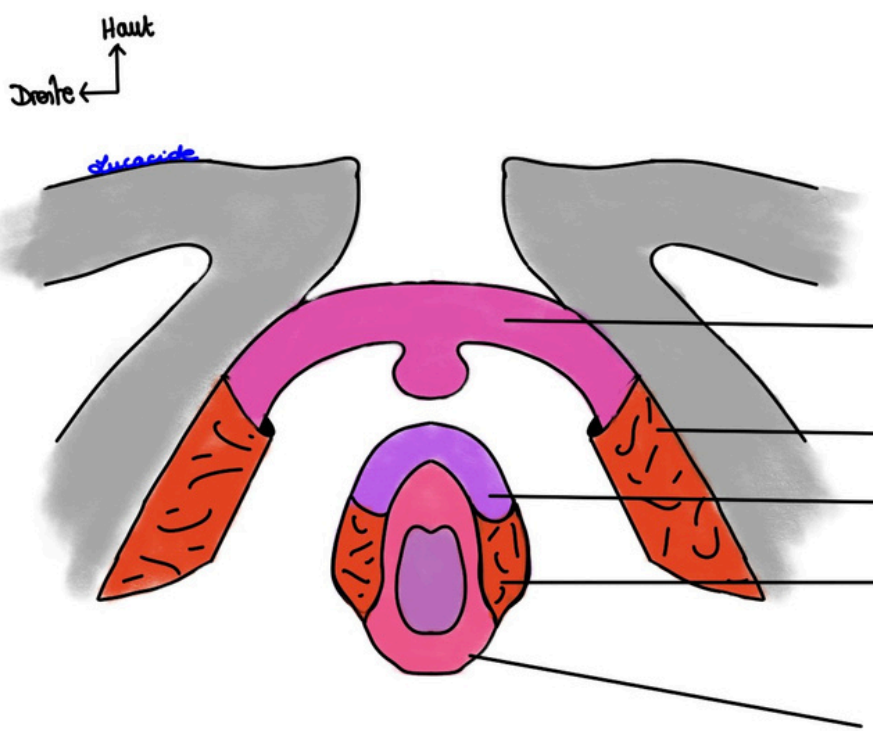


Hymen

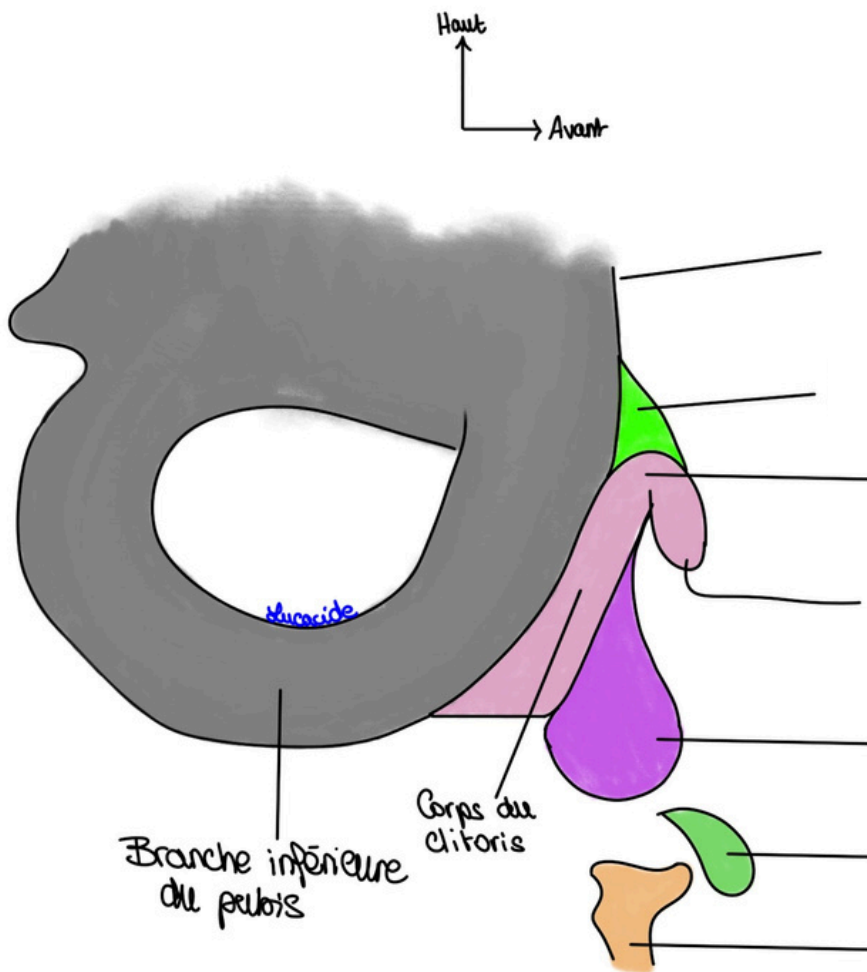


Hymen

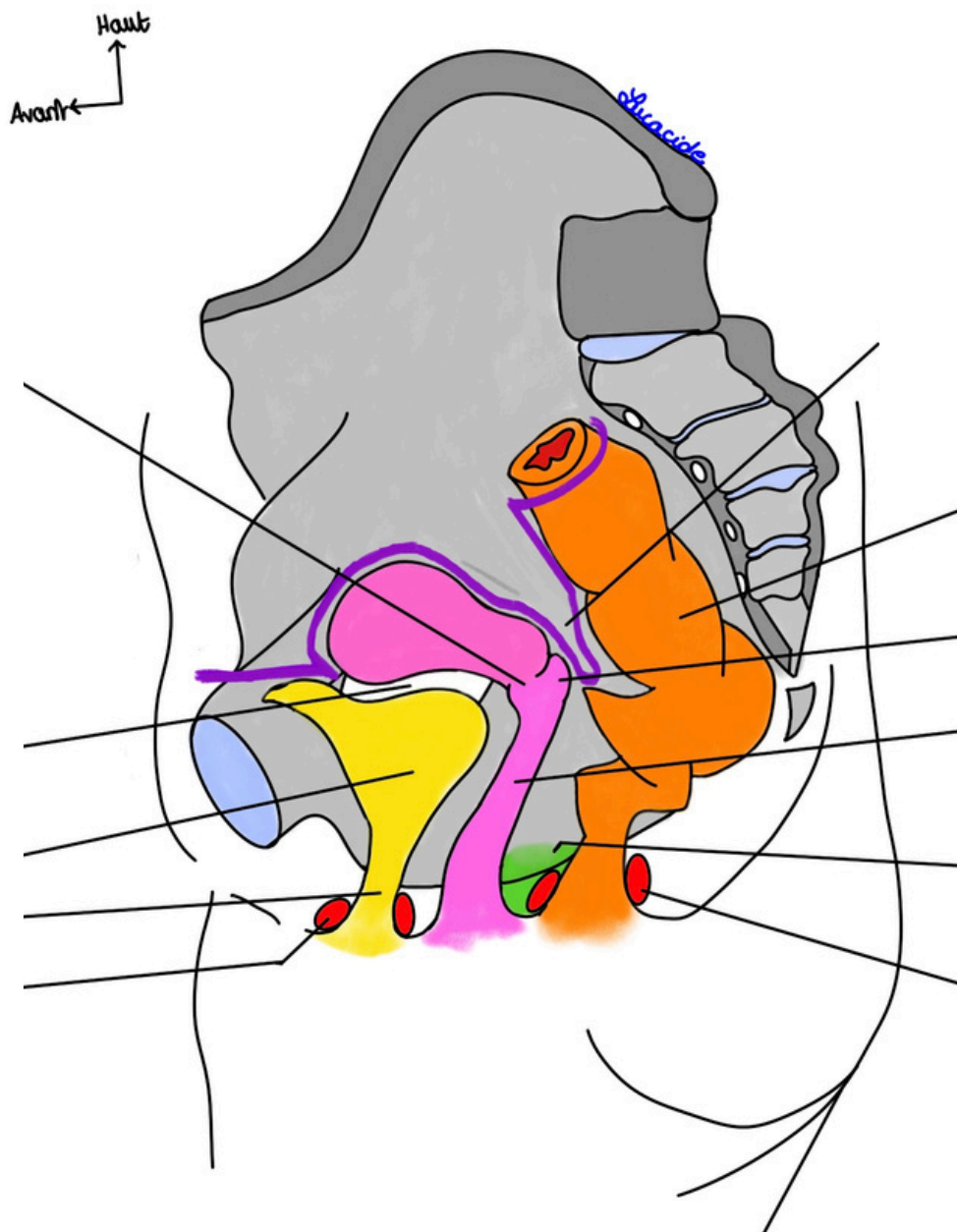




**Schéma 7 : Les corps érectiles et leurs muscles en cornets**

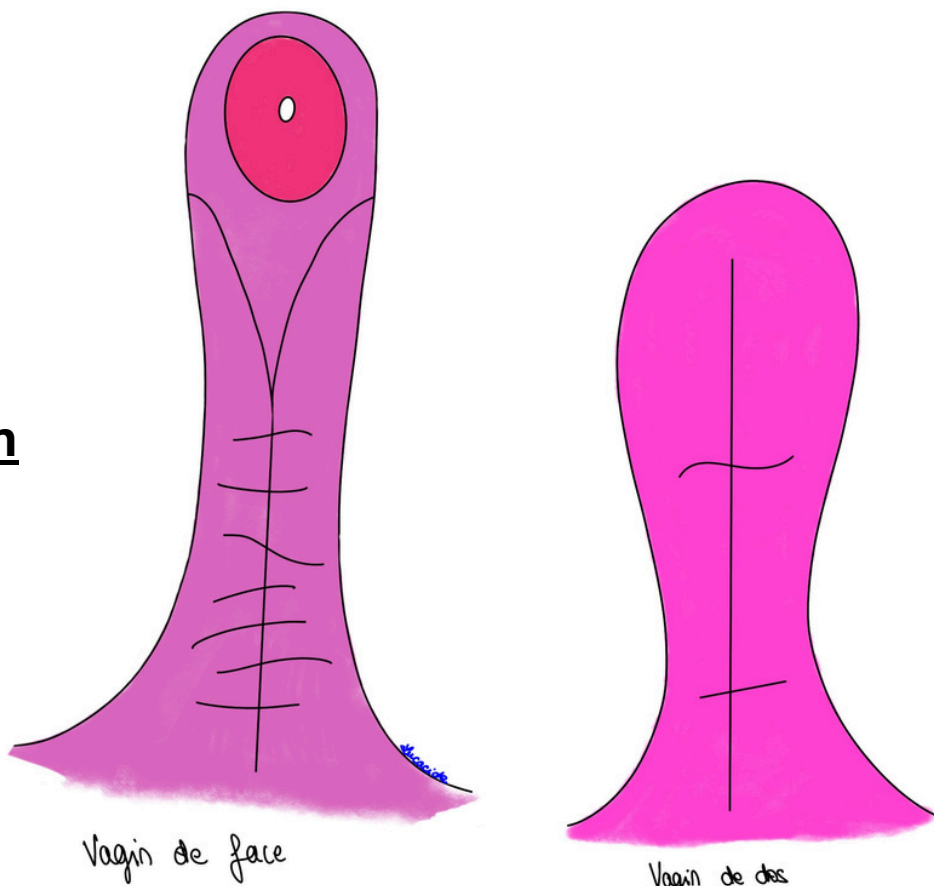


**Schéma 8 : Les corps érectiles en vue de profil**



**Schéma 9 : Coupe sagittale du Petit Bassin de la femme**

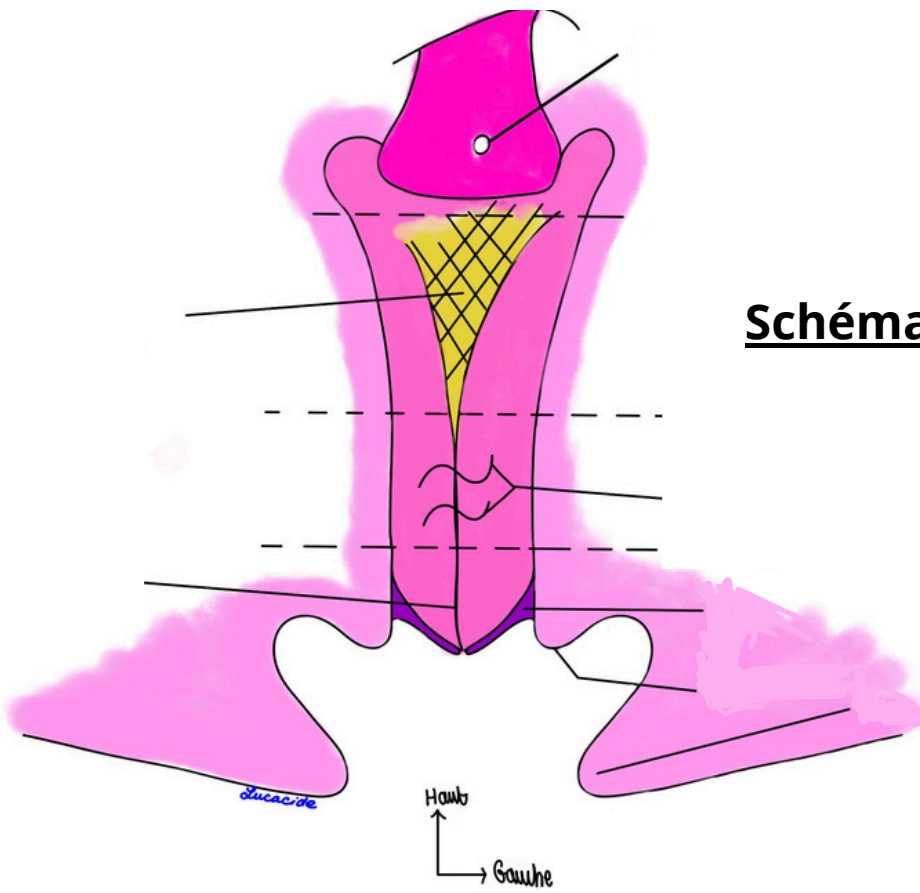
**Schéma 10 : Le vagin**



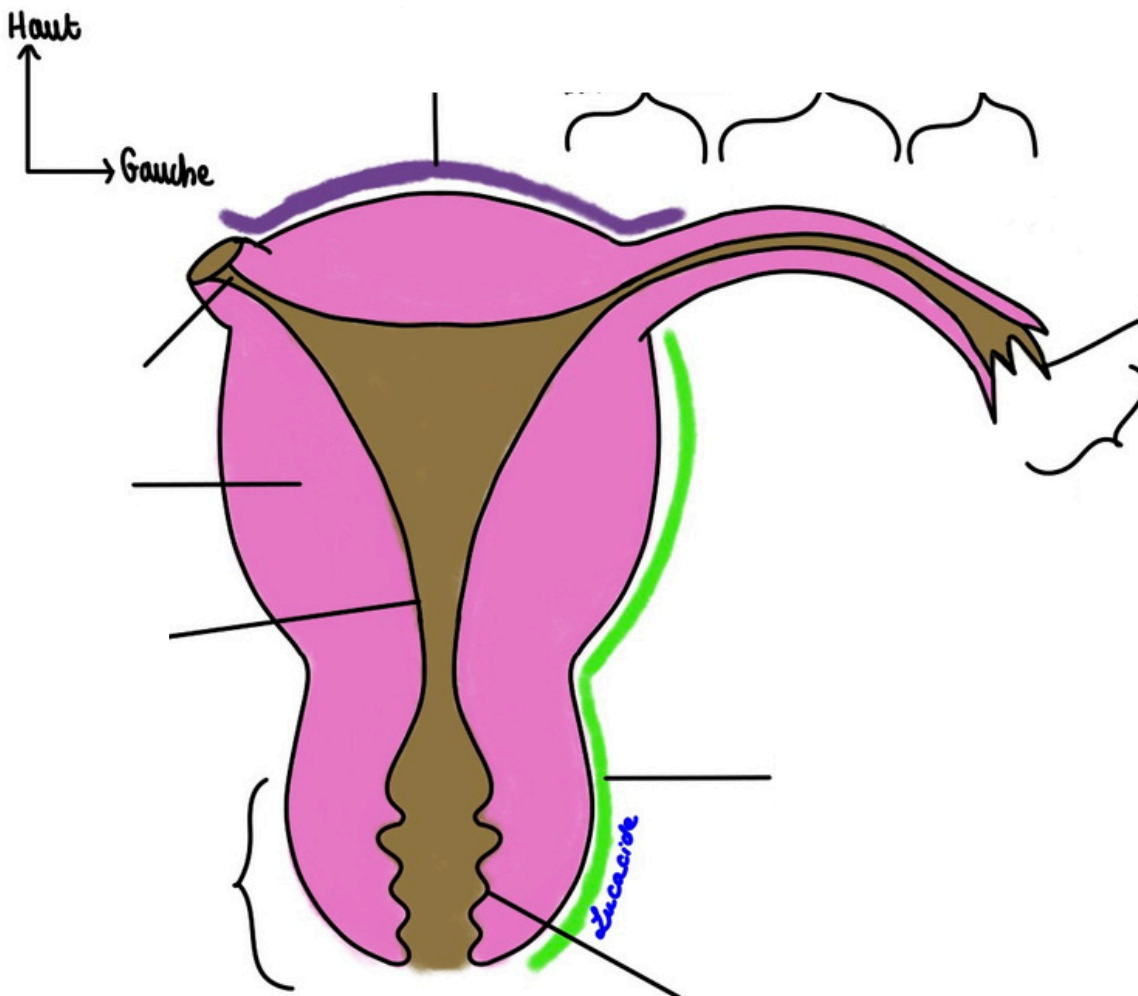
Vagin de face

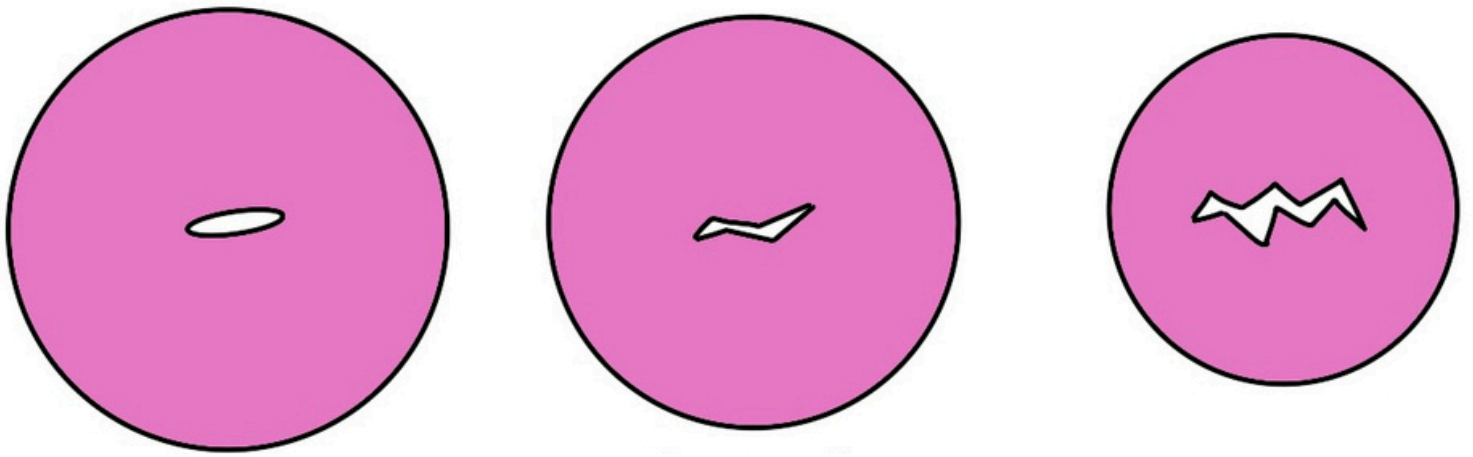
Vagin de dos

**Schéma 11 : Le vagin (bis)**

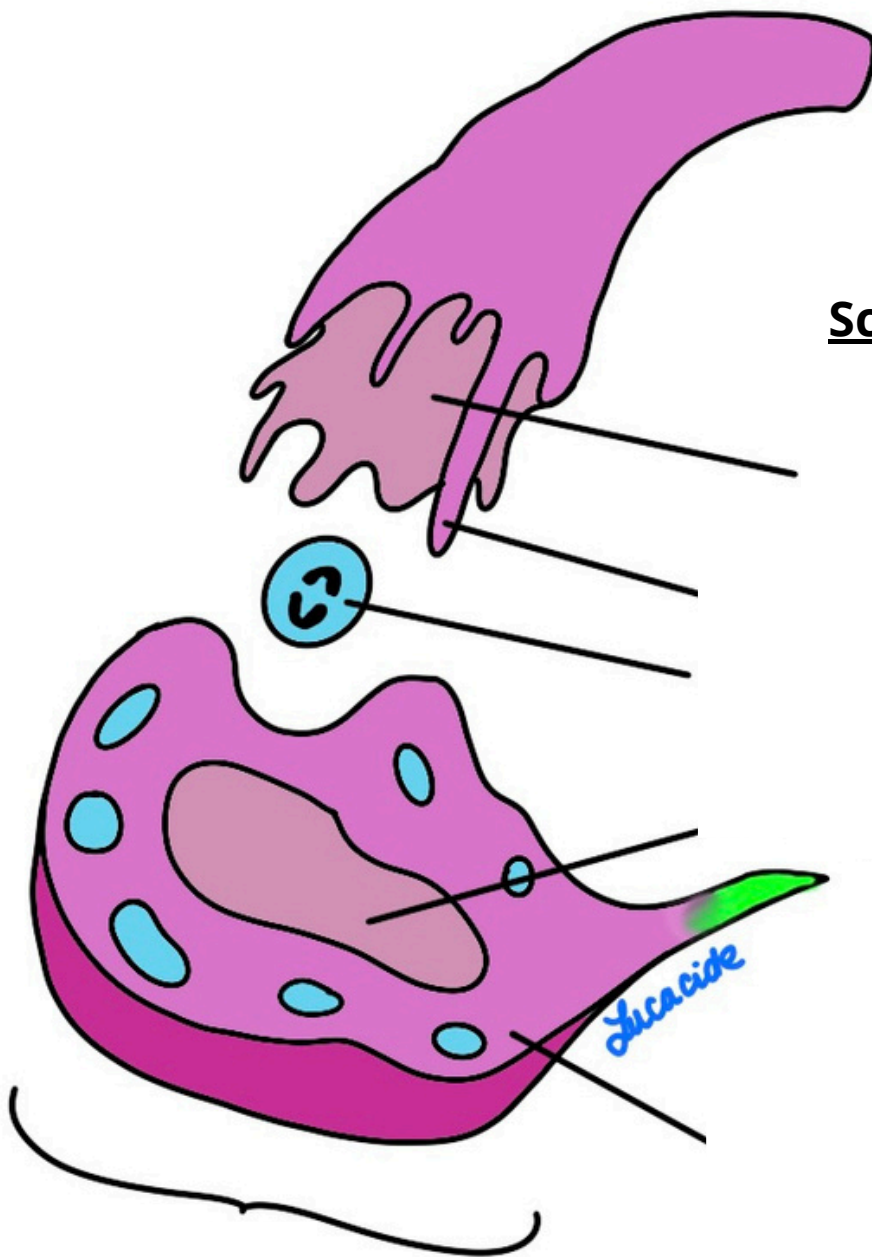


**Schéma 12 : L'utérus et les trompes**

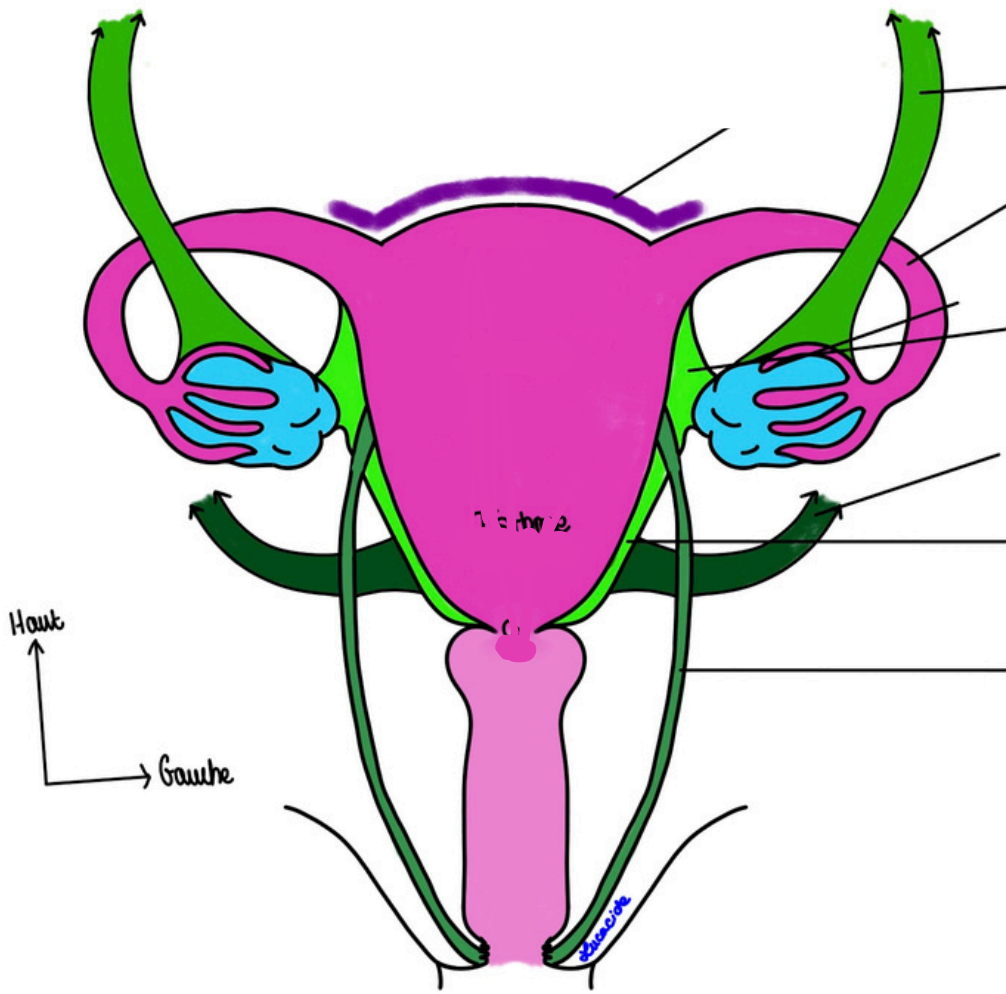




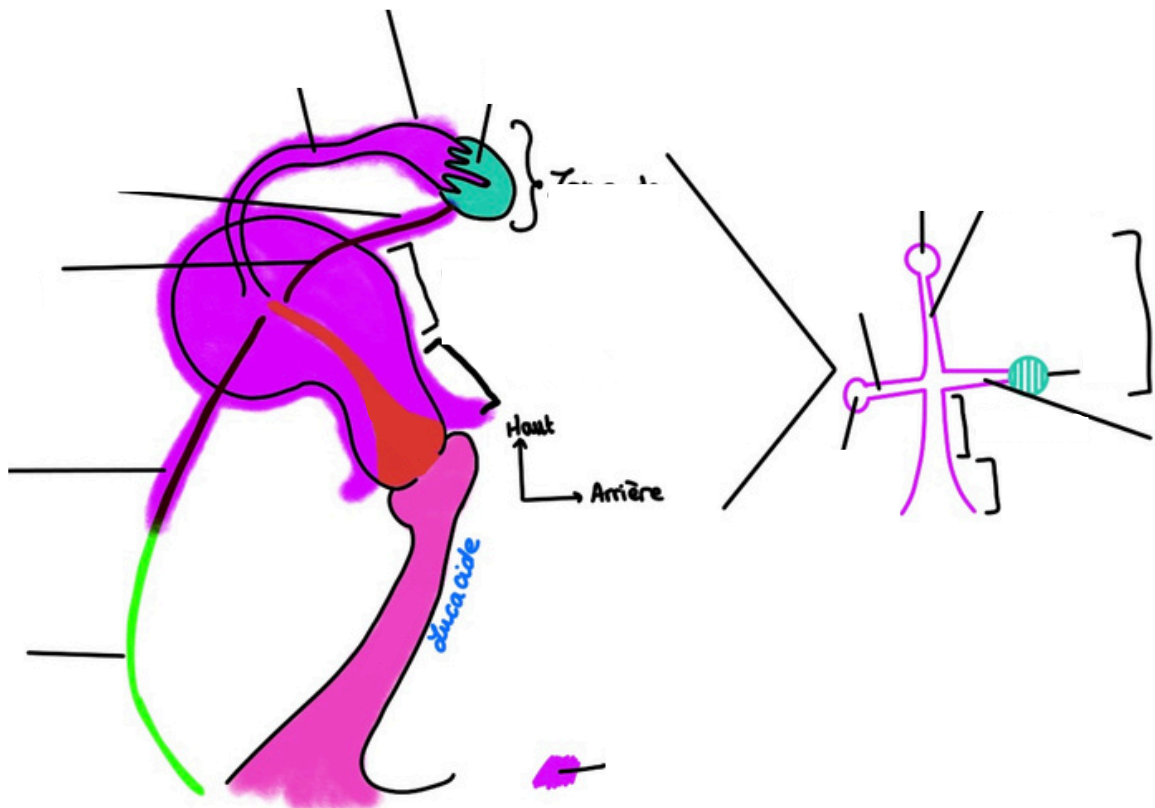
**Schéma 13 : Les différentes formes de col utérin**



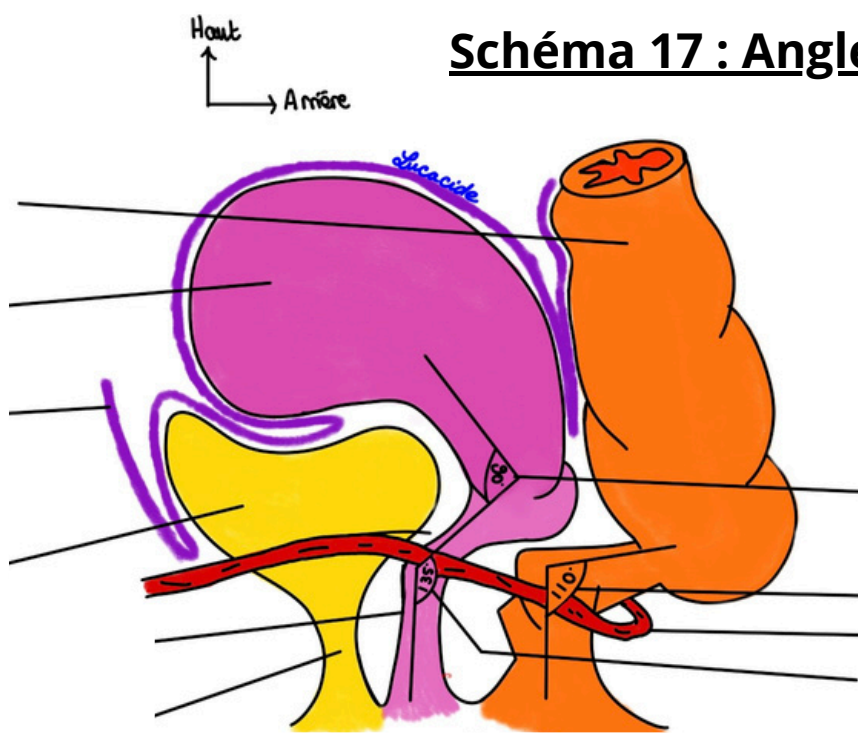
**Schéma 14 : L'ovaire**



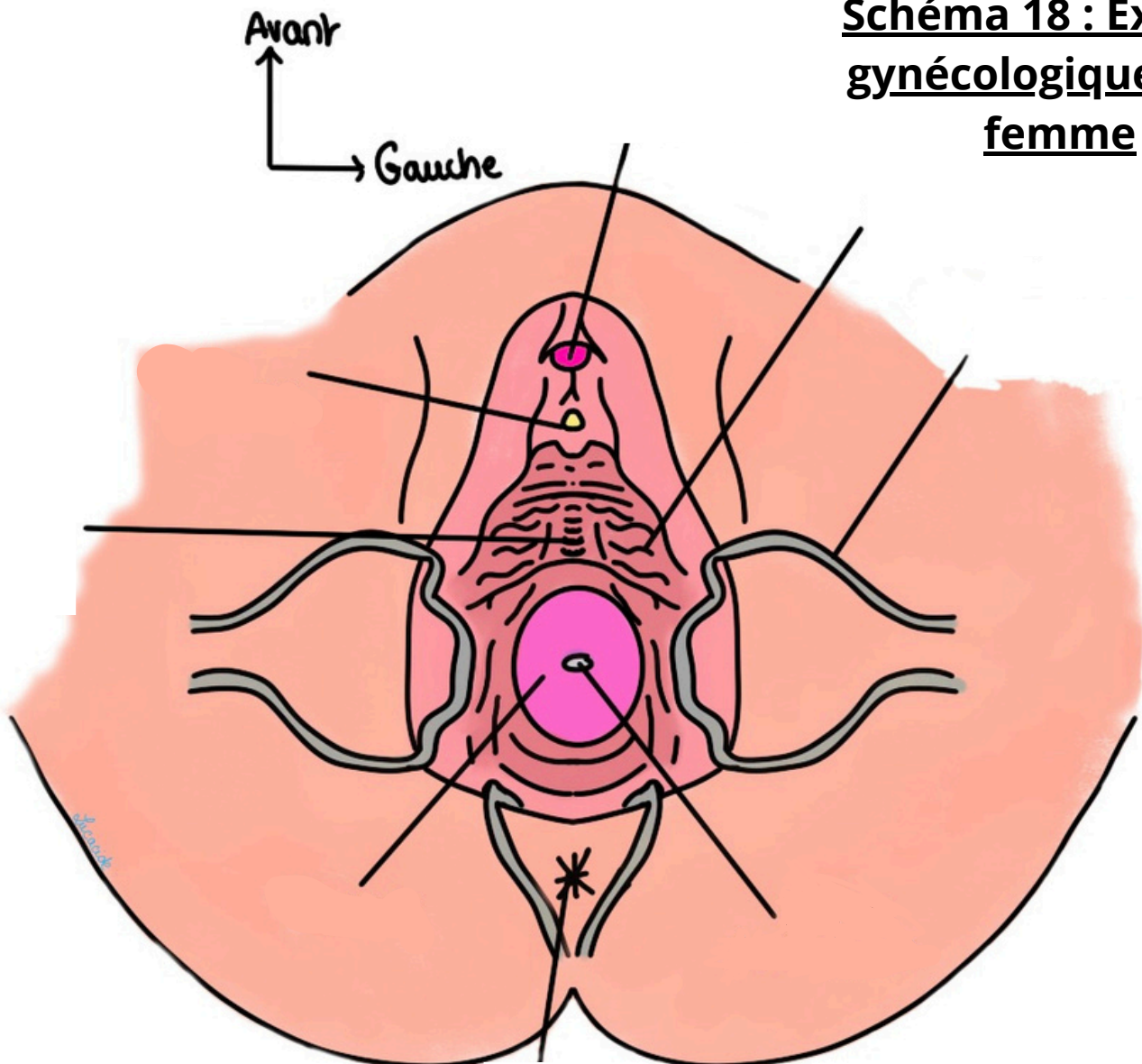
**Schéma 15 et 16 : Les ligaments**



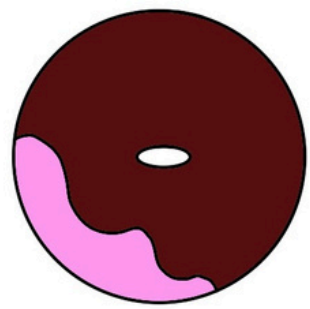
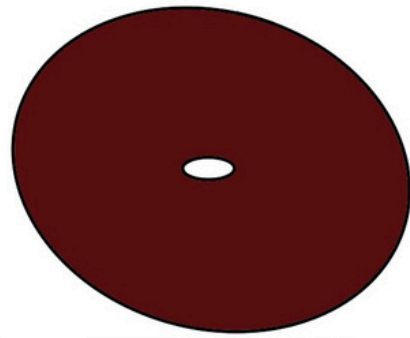
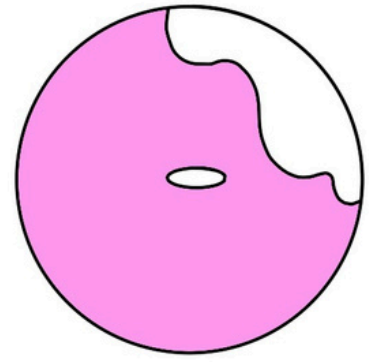
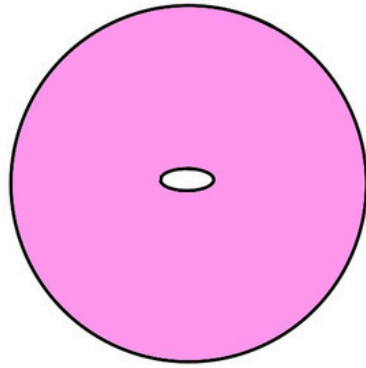
**Schéma 17 : Angles et cul-de-sac**



**Schéma 18 : Examen gynécologique de la femme**



Licacide



**Schéma 19 : Colorations du col utérin**