

Schéma 1 : Base osseuse

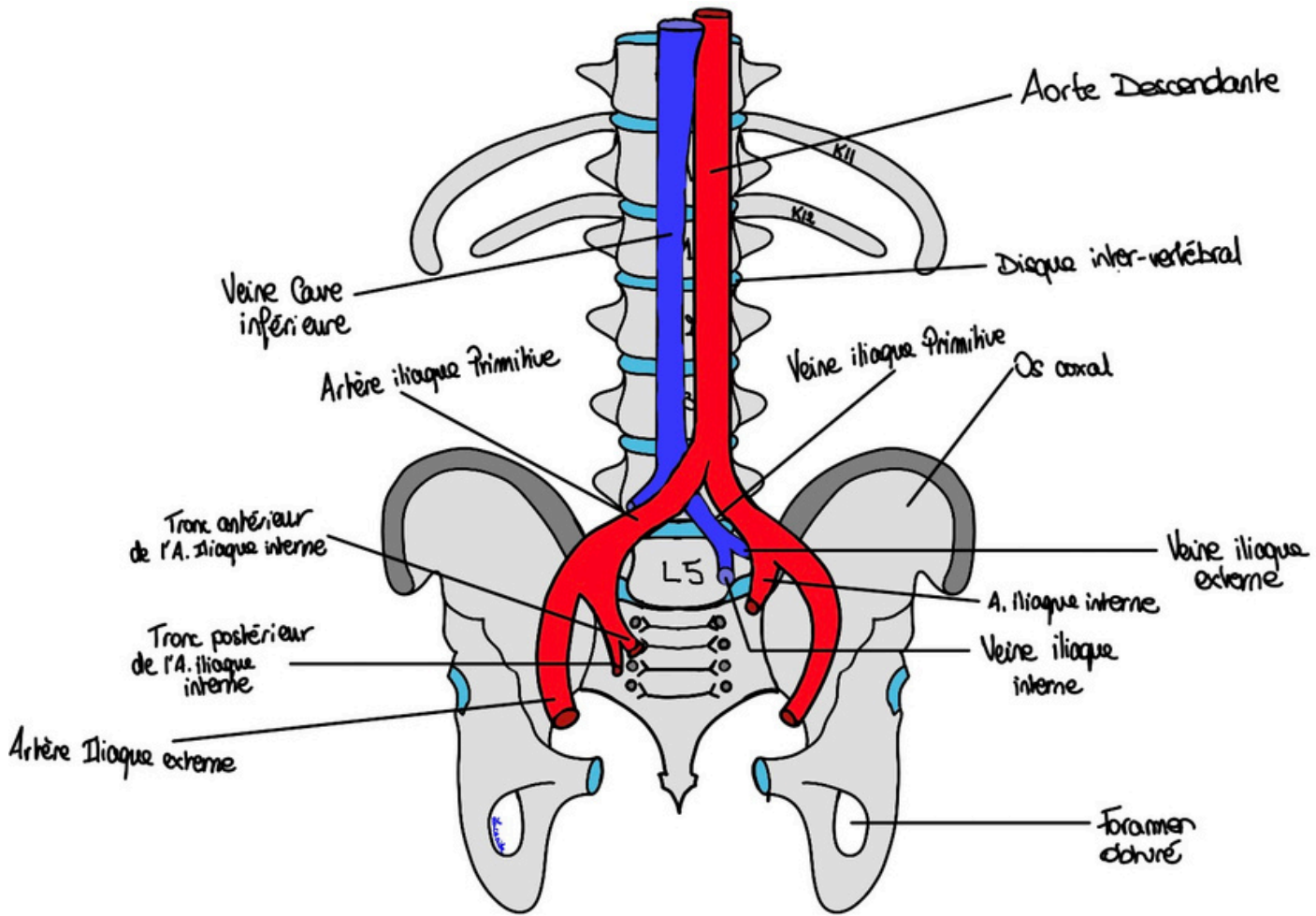


Schéma 2 : Vascularisation du Petit Bassin

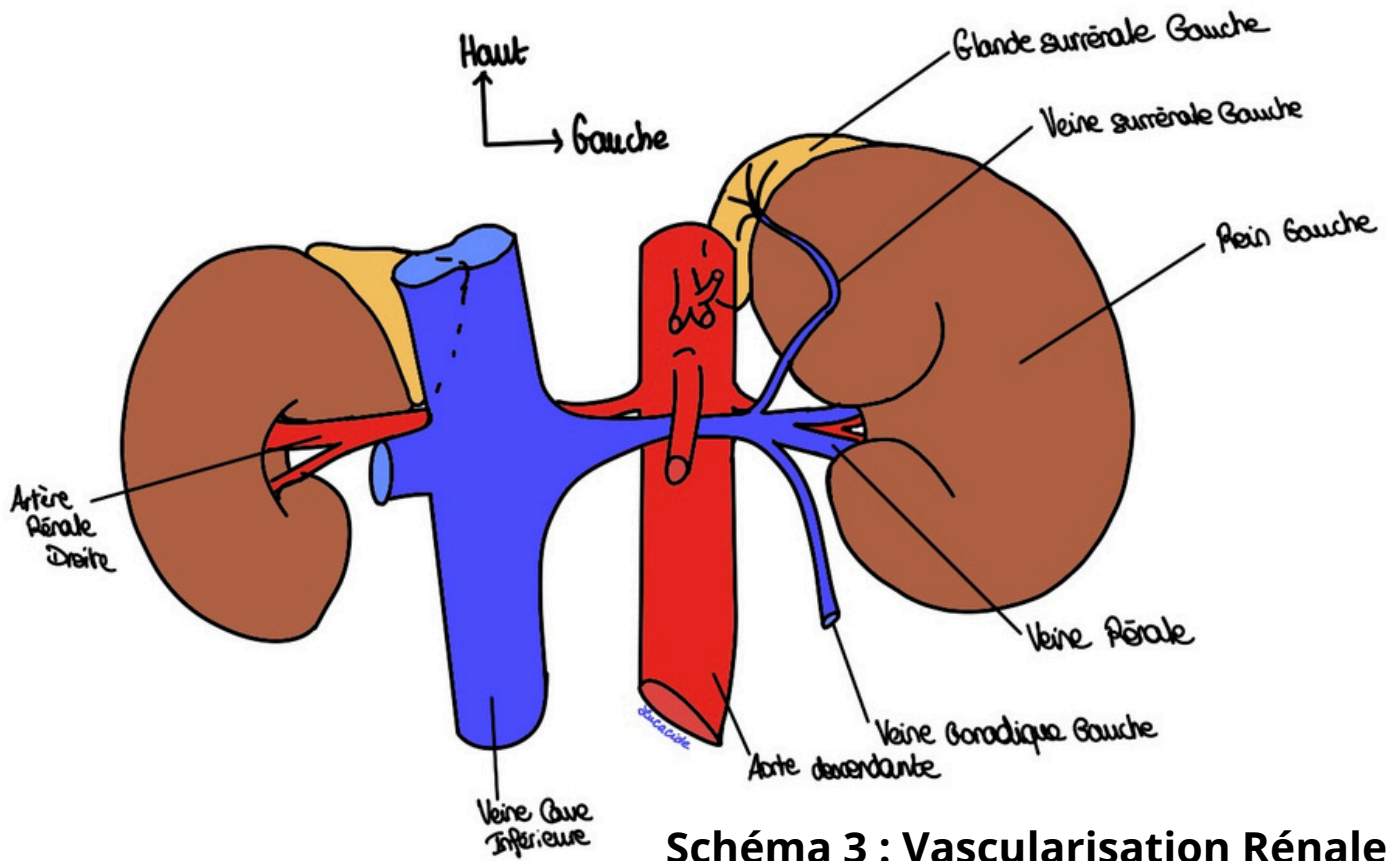


Schéma 3 : Vascularisation Rénale

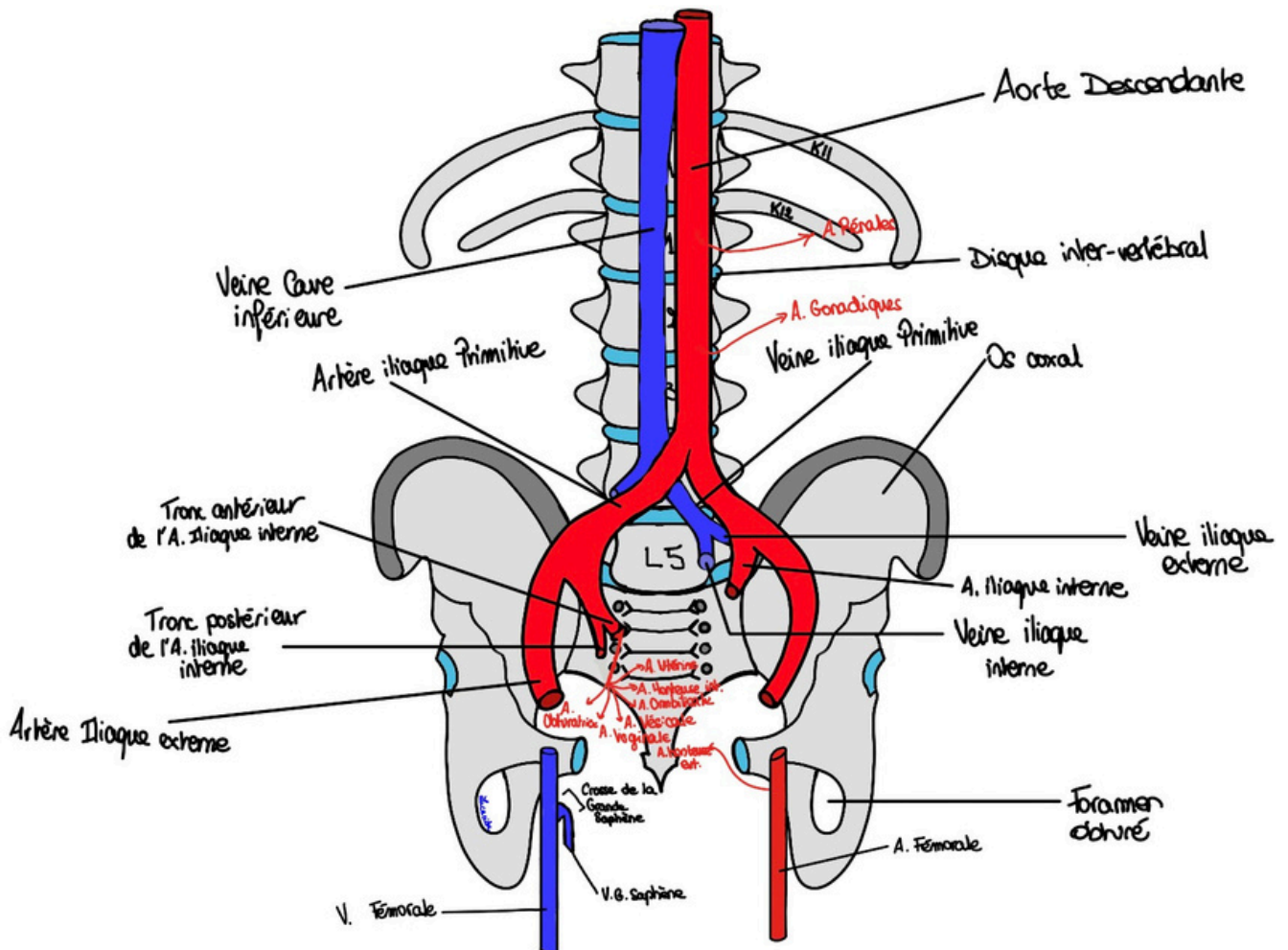


Schéma 4 : Vascularisation du Petit Bassin bis

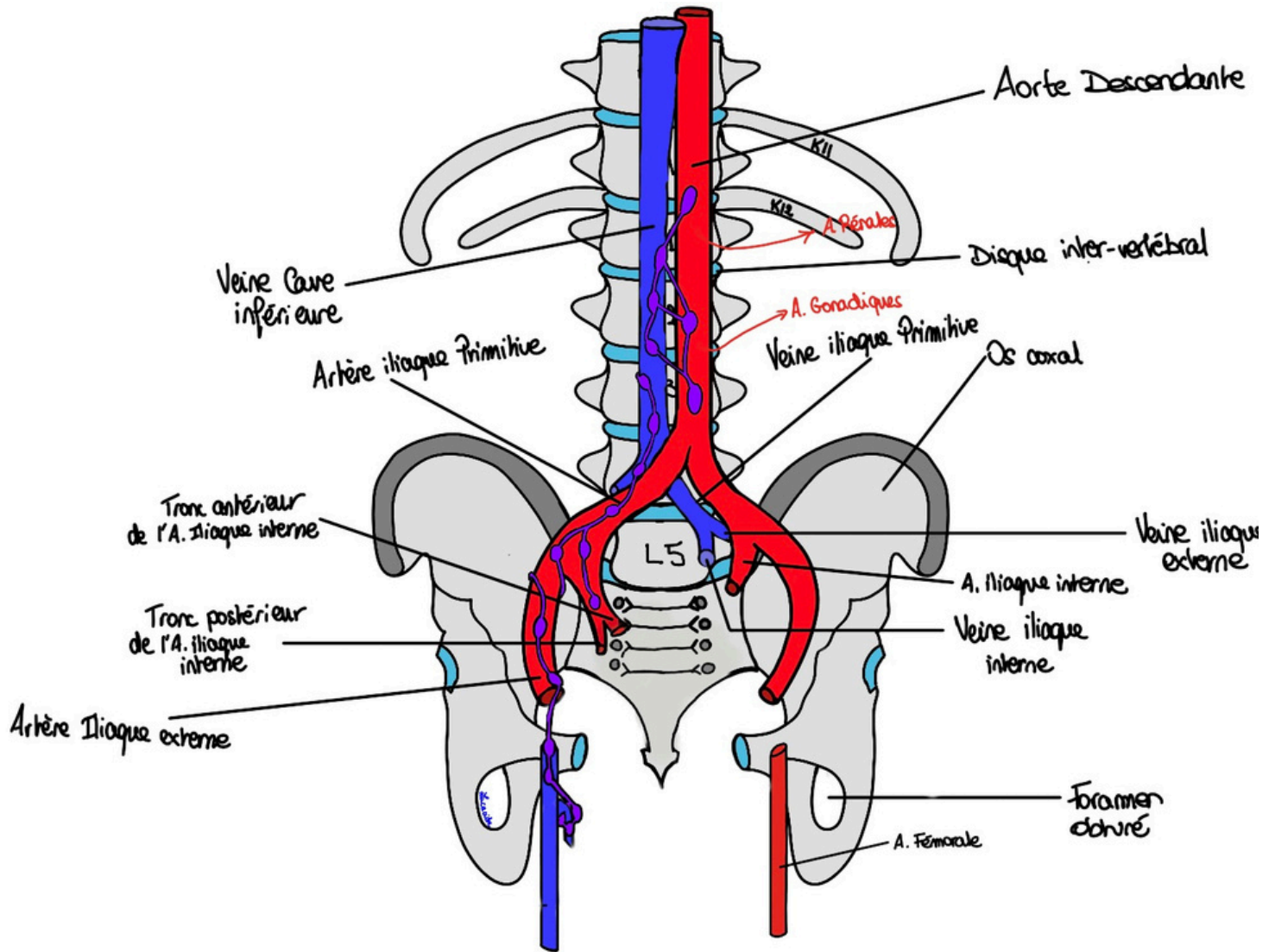


Schéma 5 : Vascularisation du Petit Bassin avec courants lymphatiques

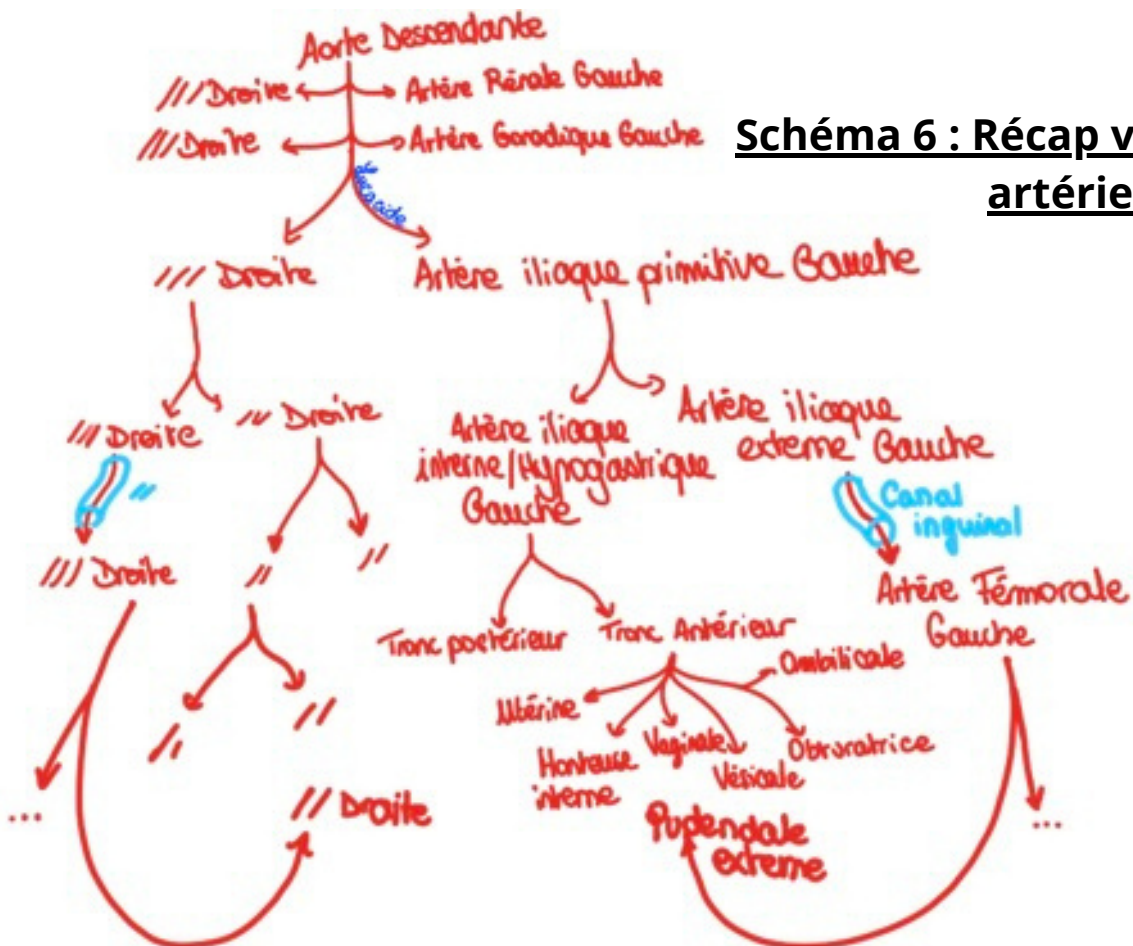


Schéma 6 : Récap vascularisation artérielle

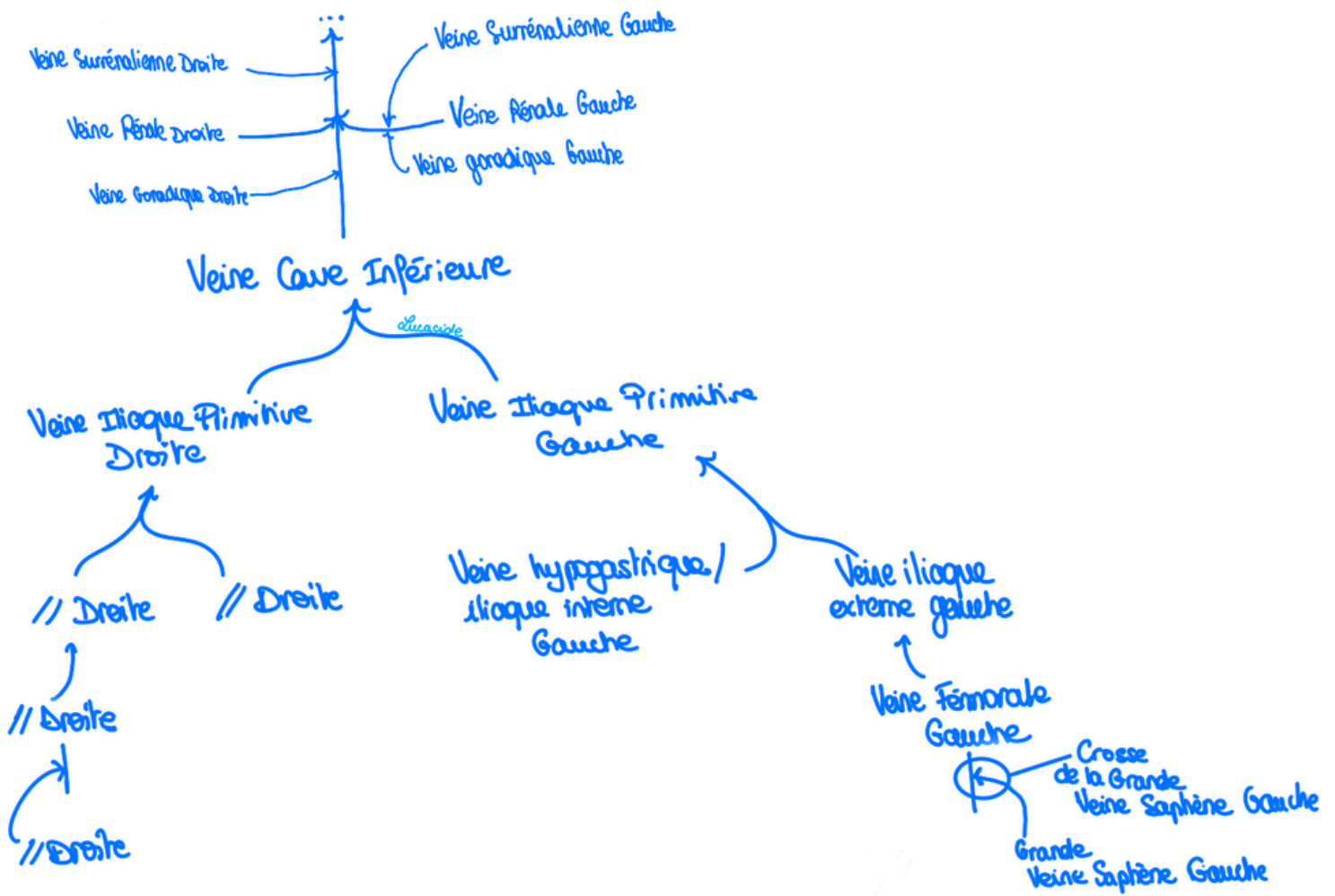


Schéma 7 : Récap vascularisation veineuse

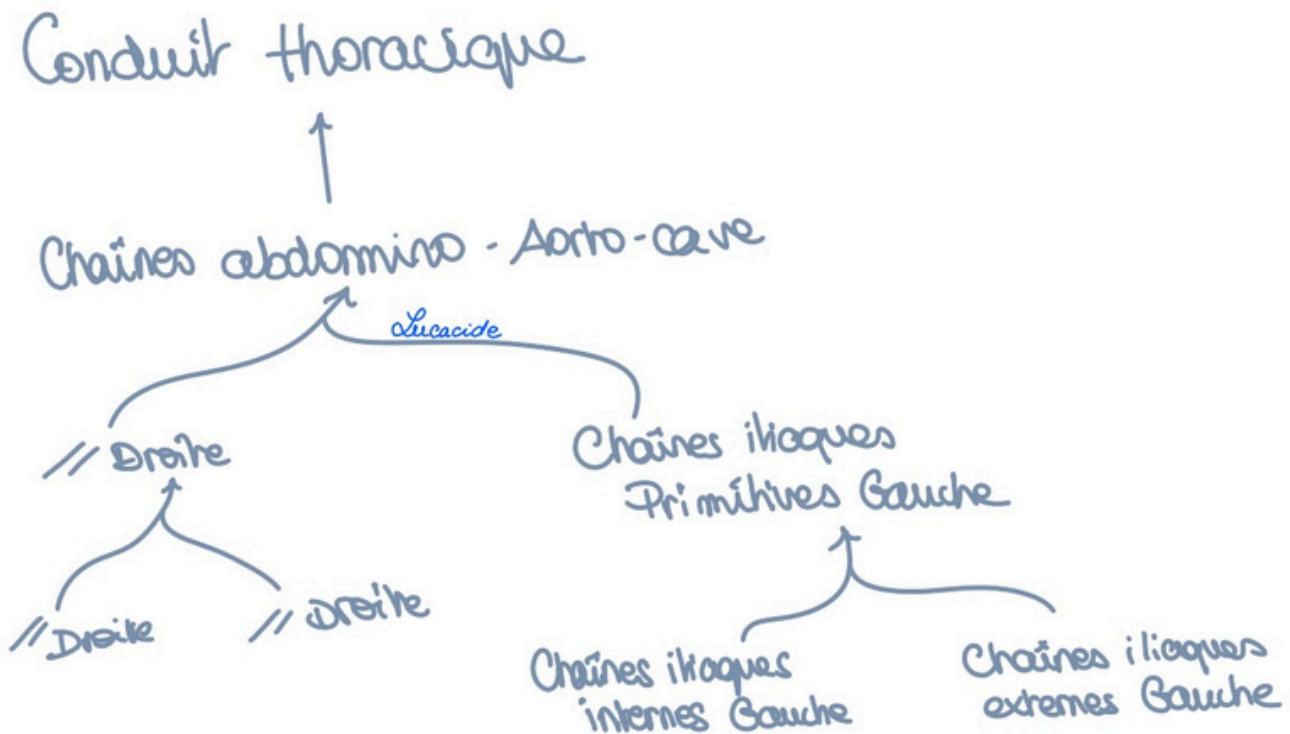


Schéma 8 : Récap courants de drainage lymphatiques

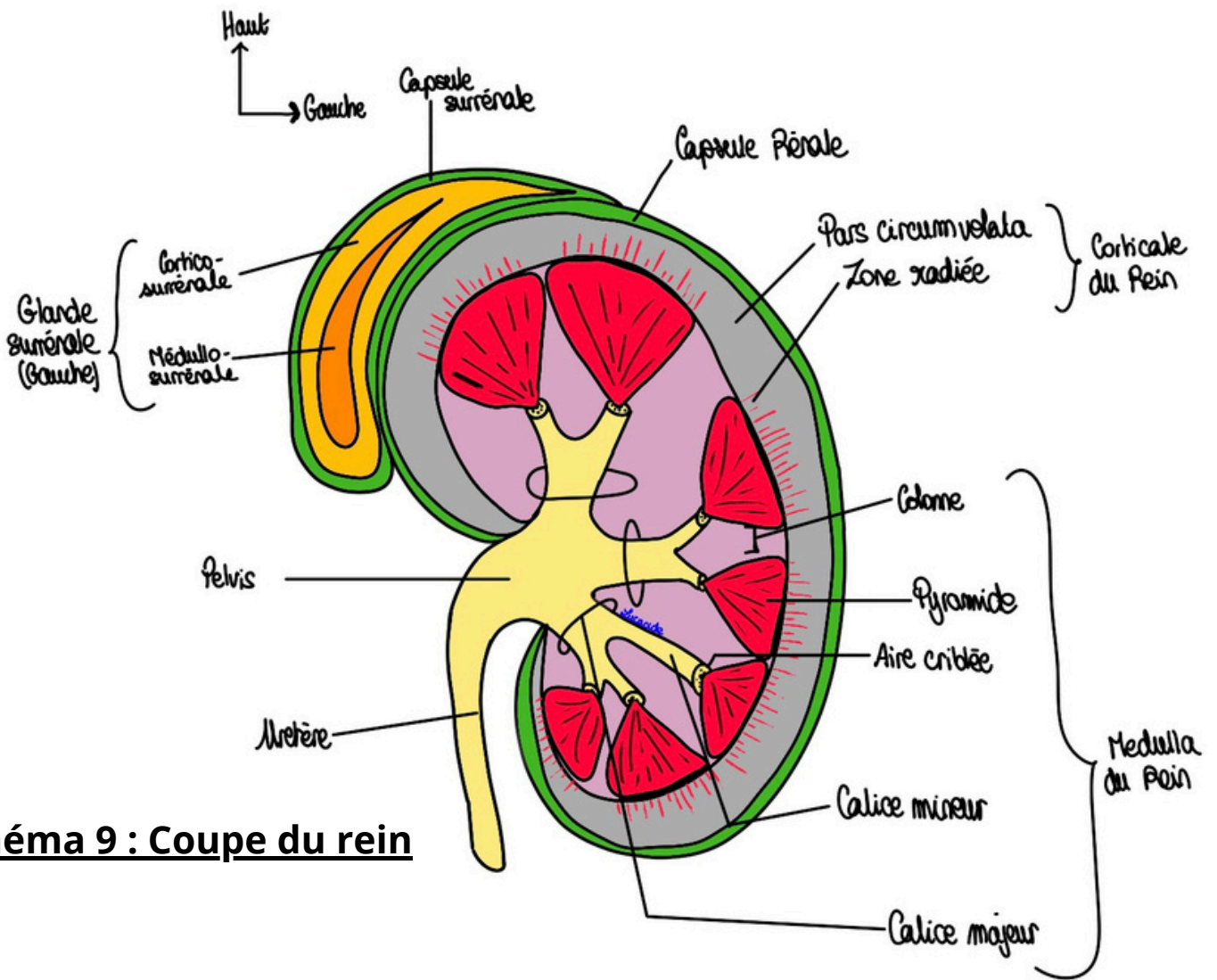


Schéma 9 : Coupe du rein

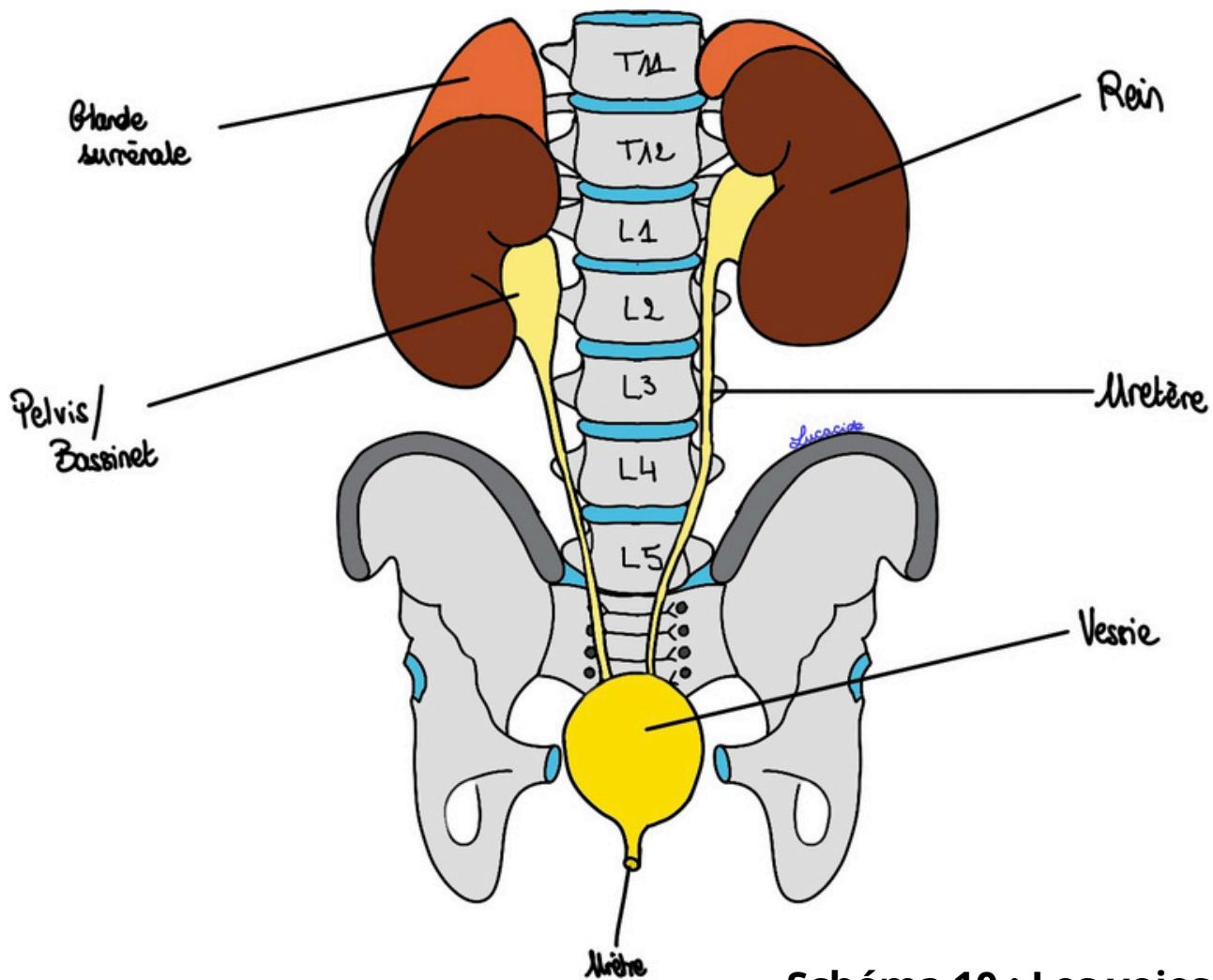


Schéma 10 : Les voies urinaires

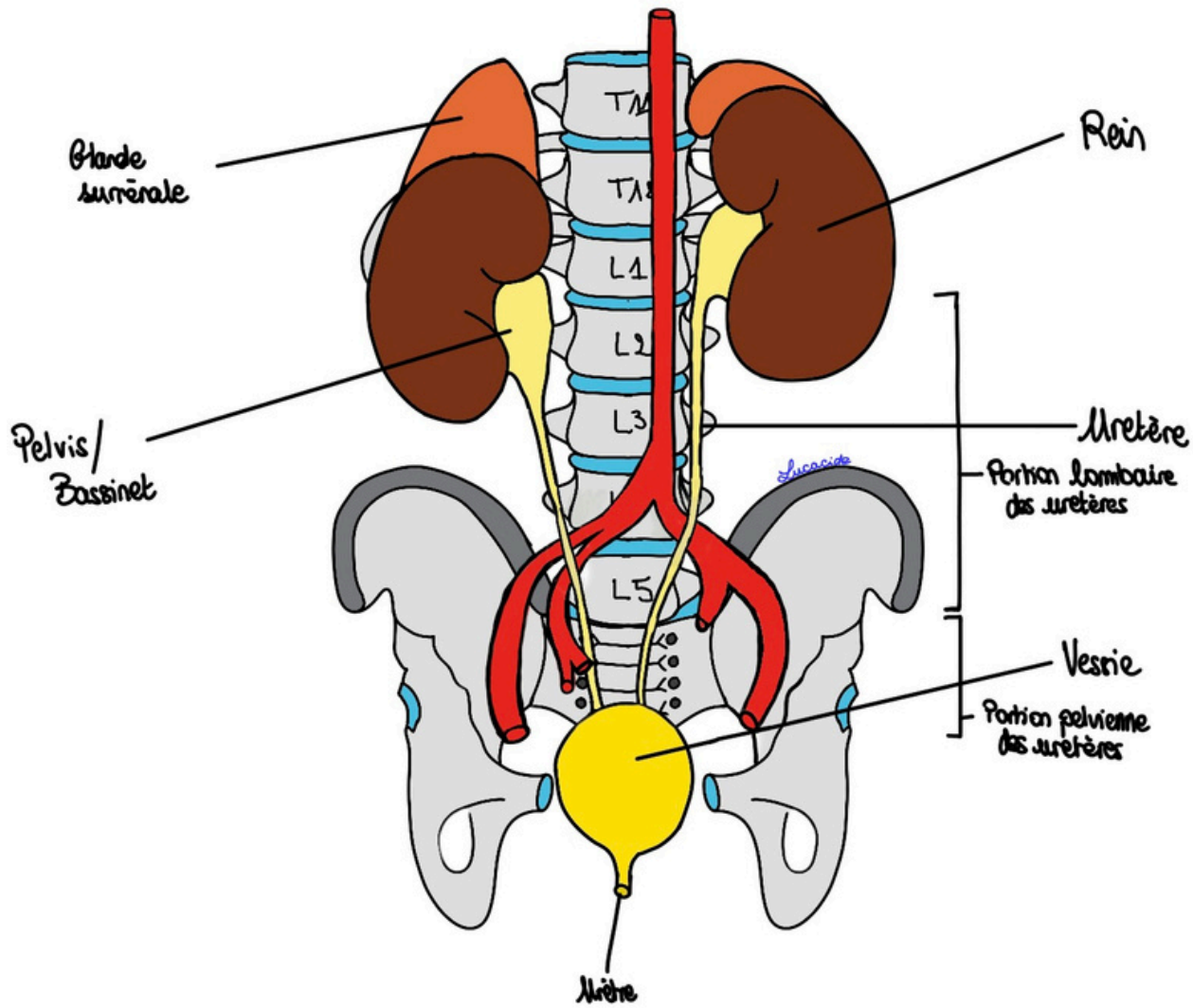
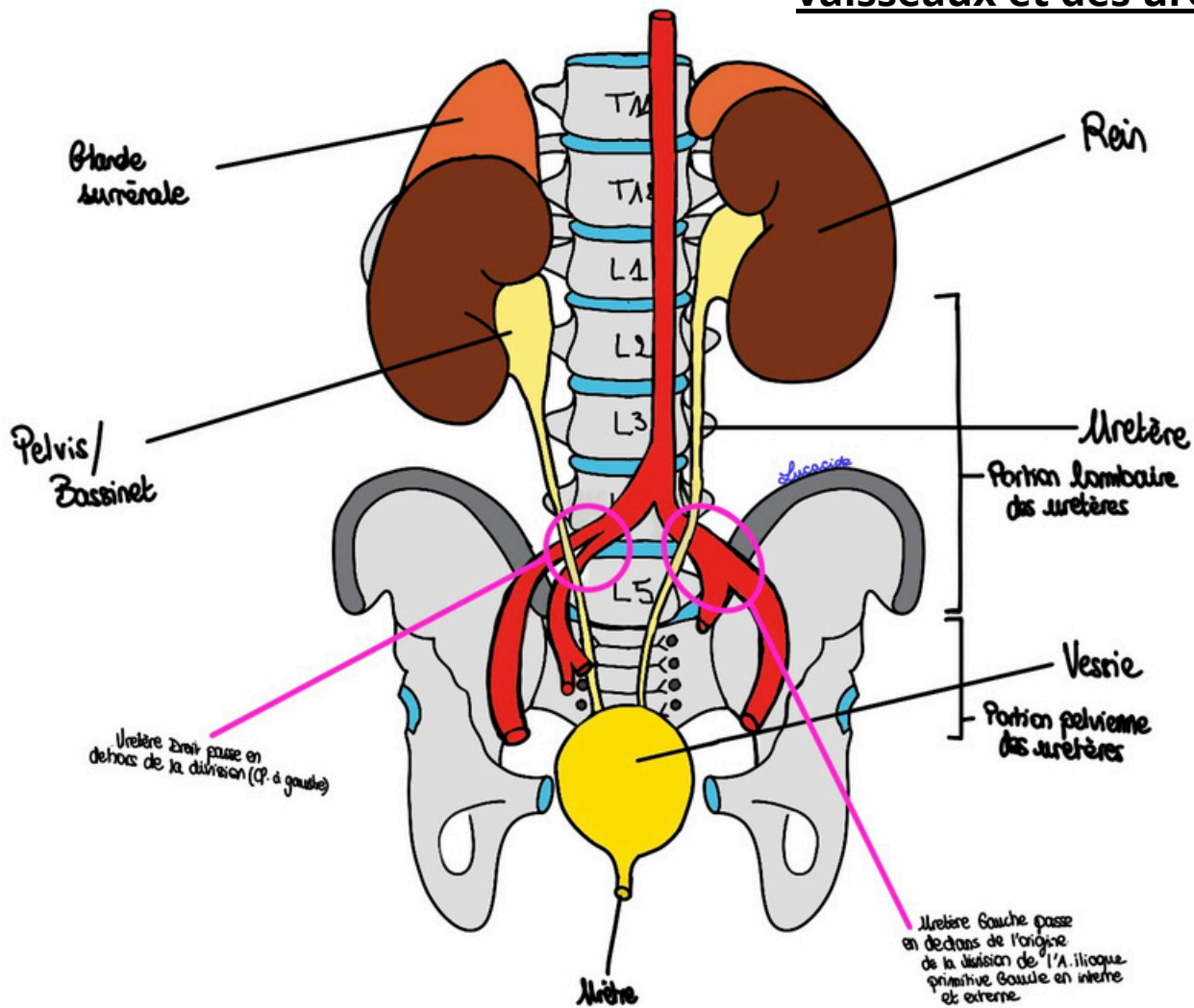
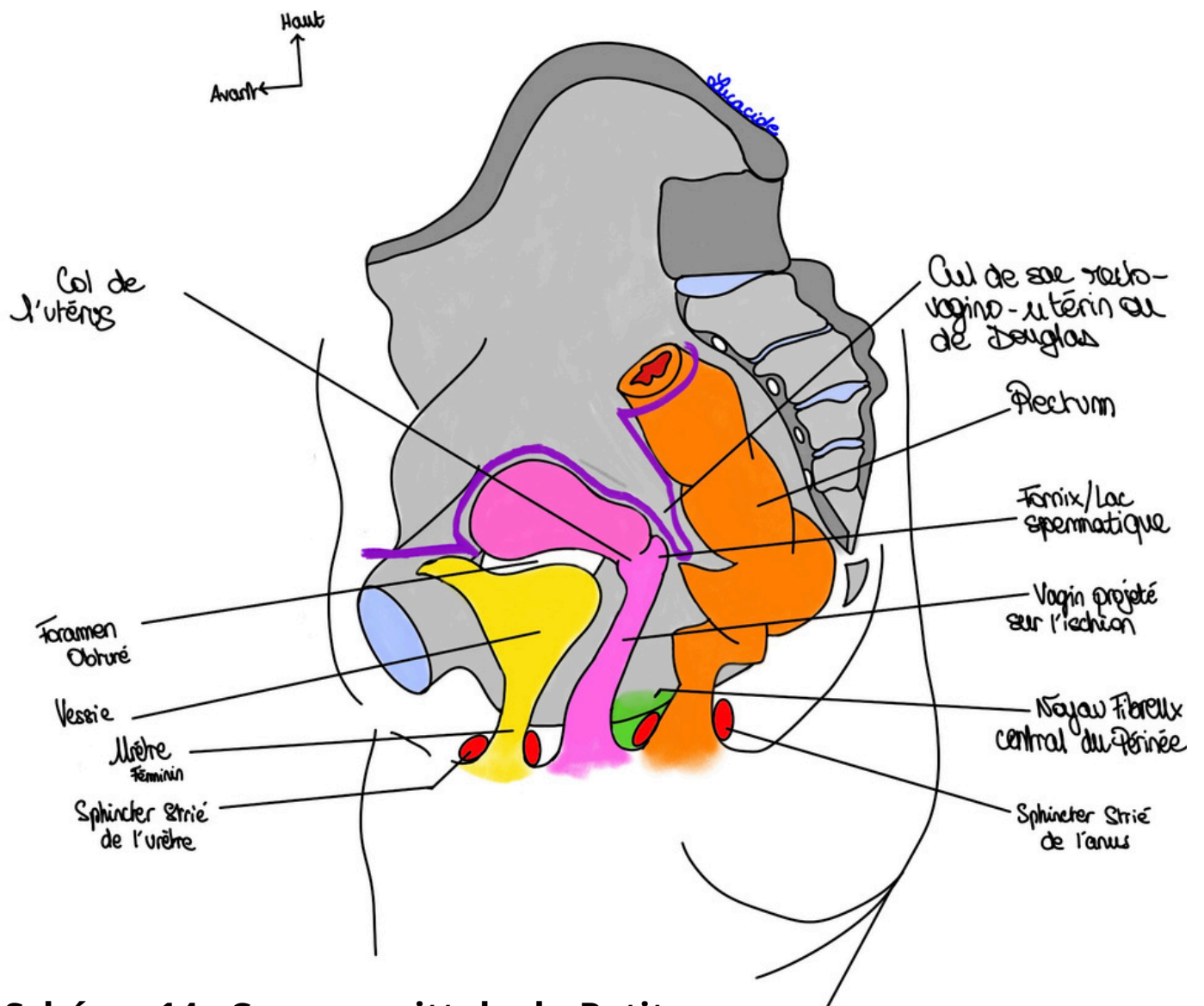
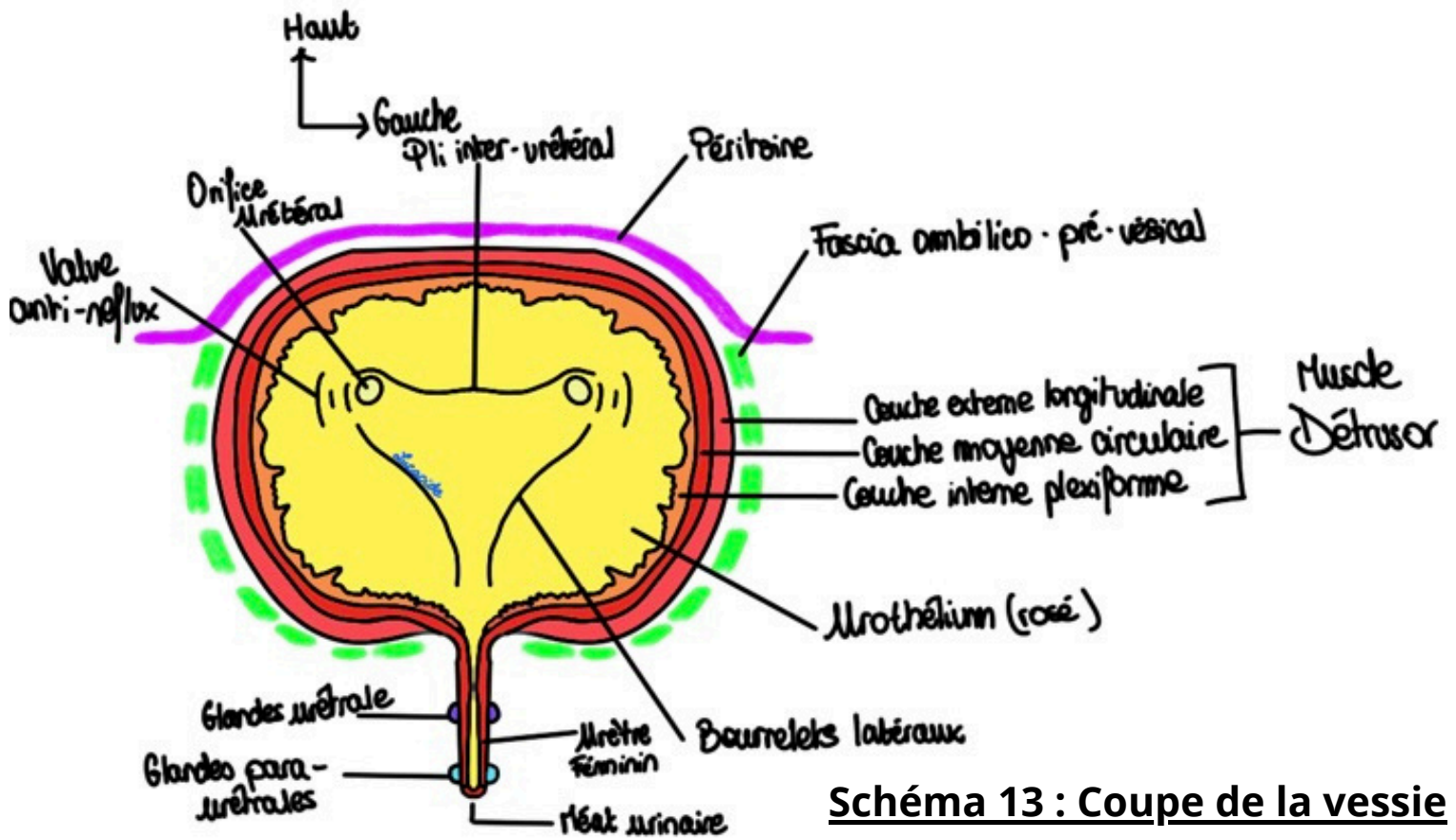


Schéma 11 et 12 : Croisement des vaisseaux et des uretères





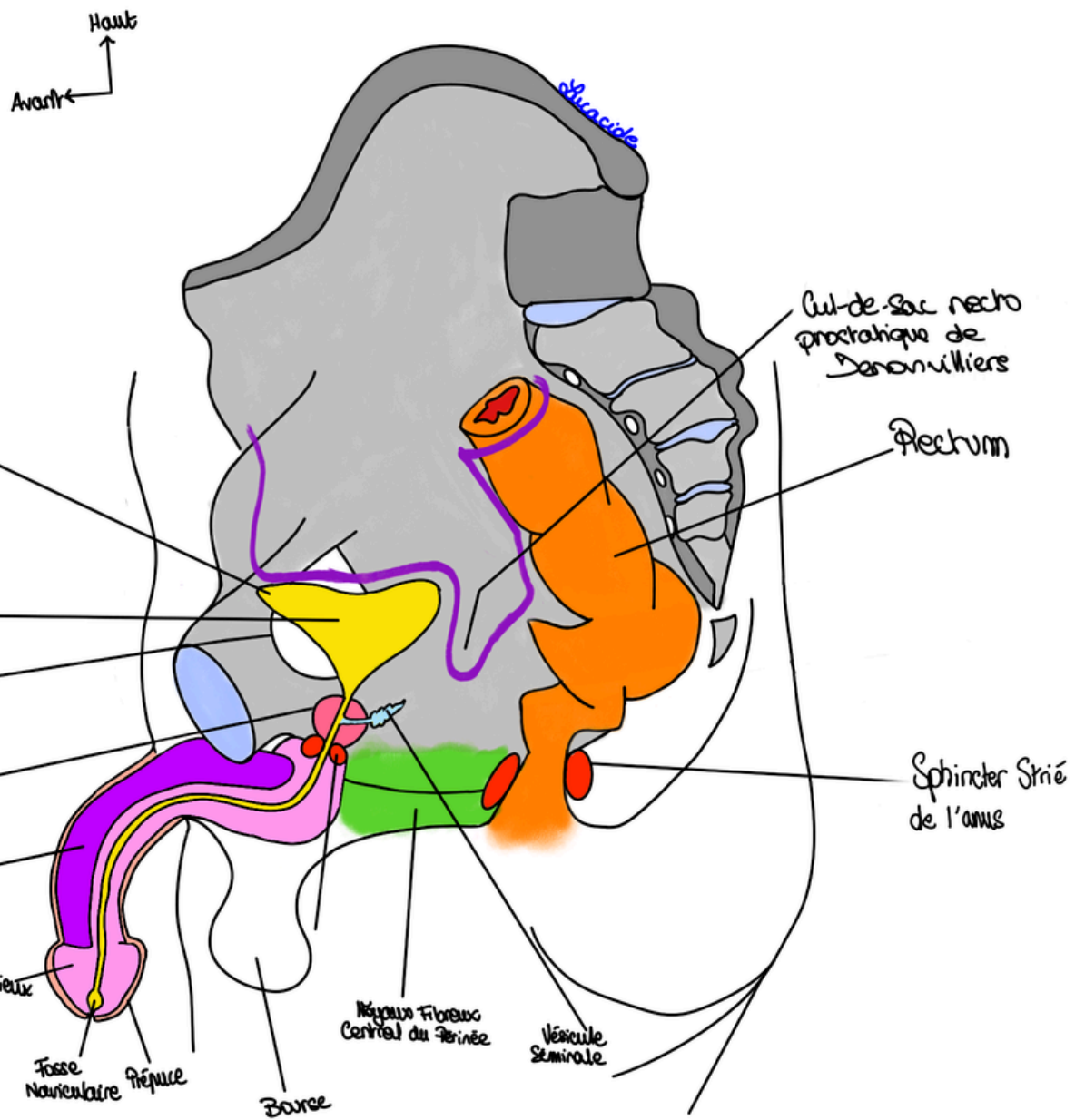


Schéma 15 : Coupe sagittale du Petit Bassin de l'homme

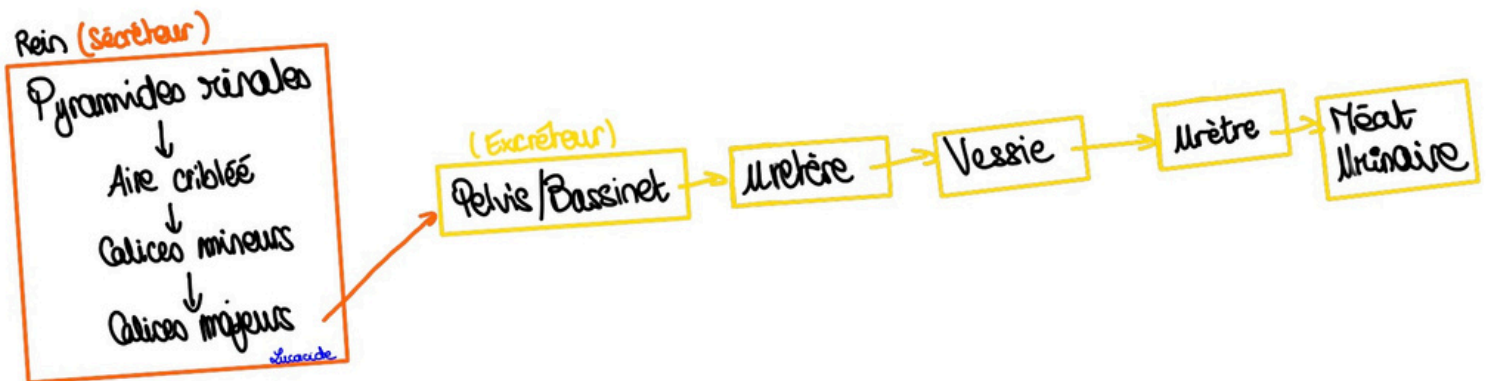


Schéma 16 : Récap des voies urinaires