

Schéma 1 : Base osseuse

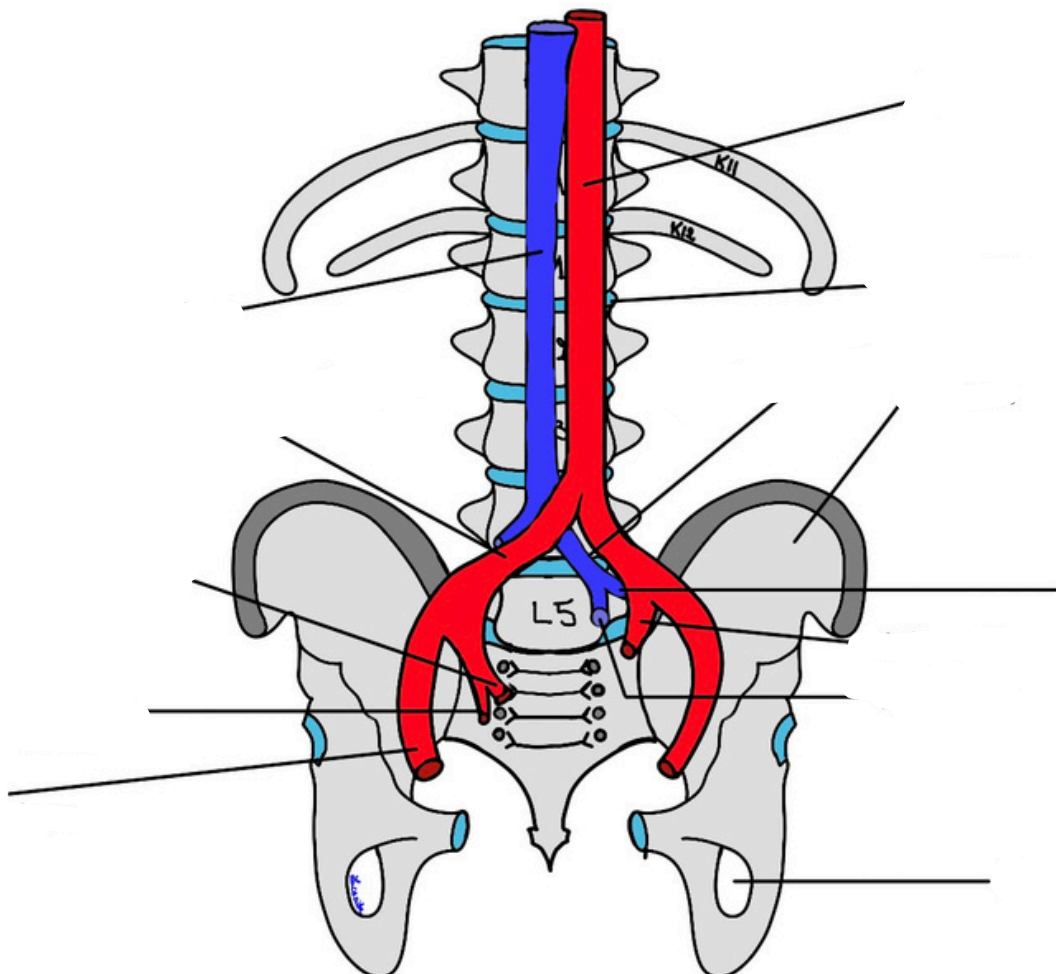


Schéma 2 : Vascularisation du Petit Bassin

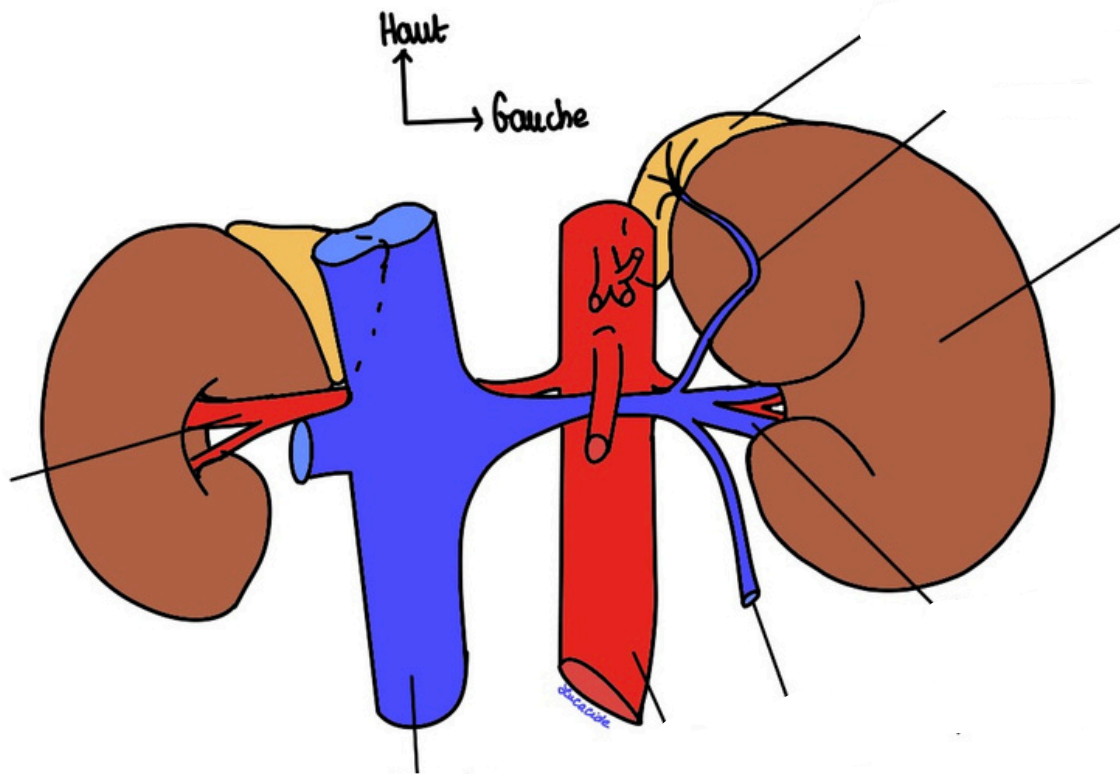


Schéma 4 : Vascularisation Rénale

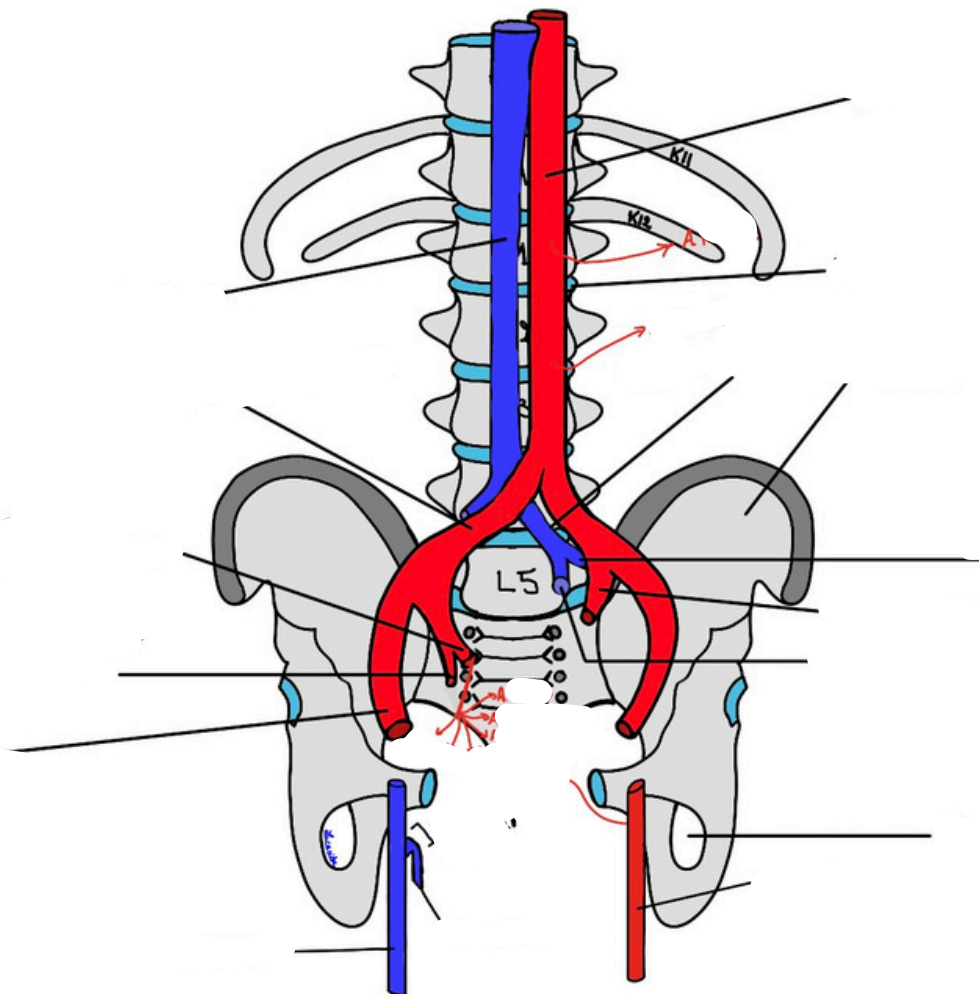


Schéma 5 : Vascularisation du Petit Bassin bis

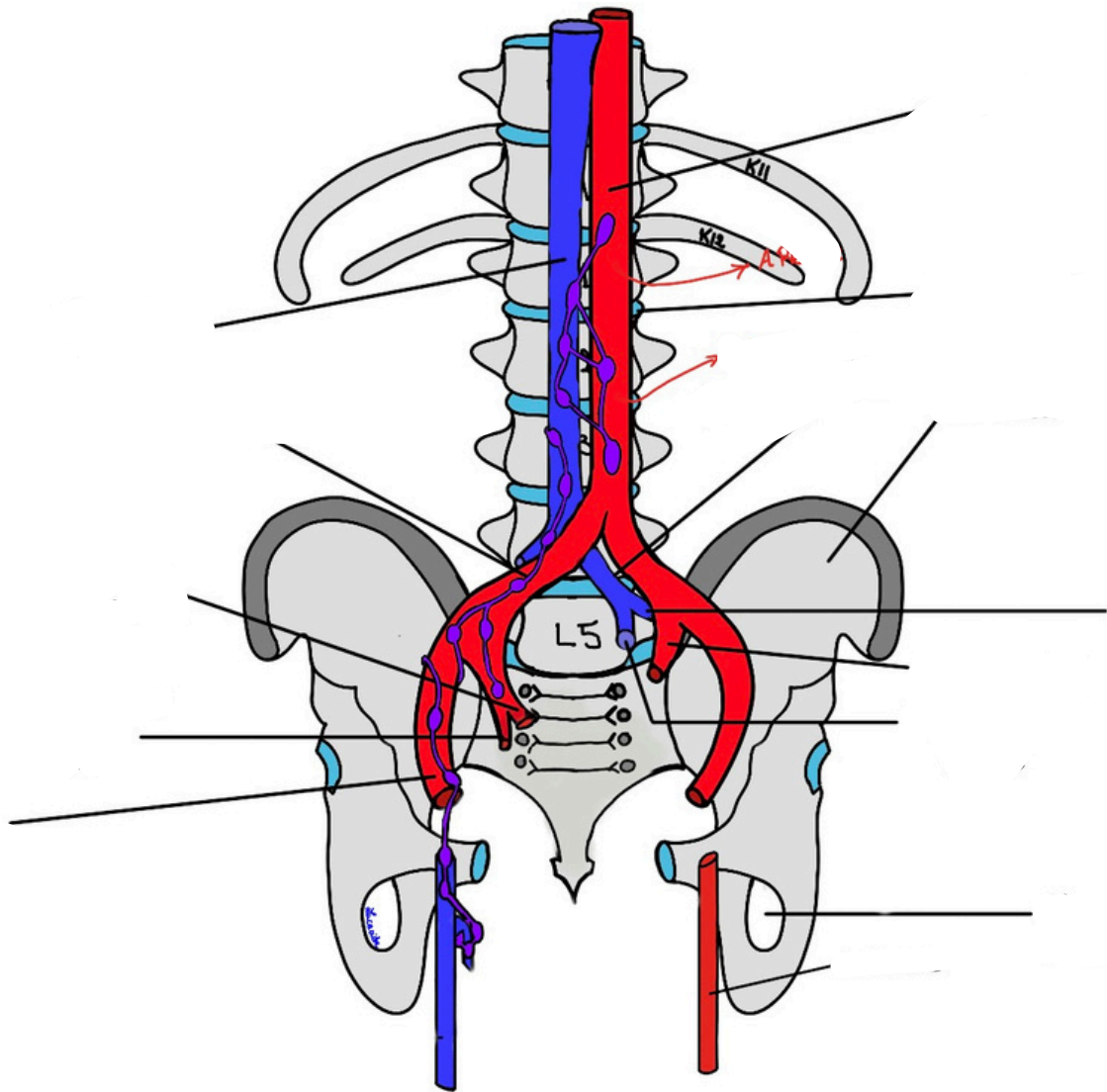
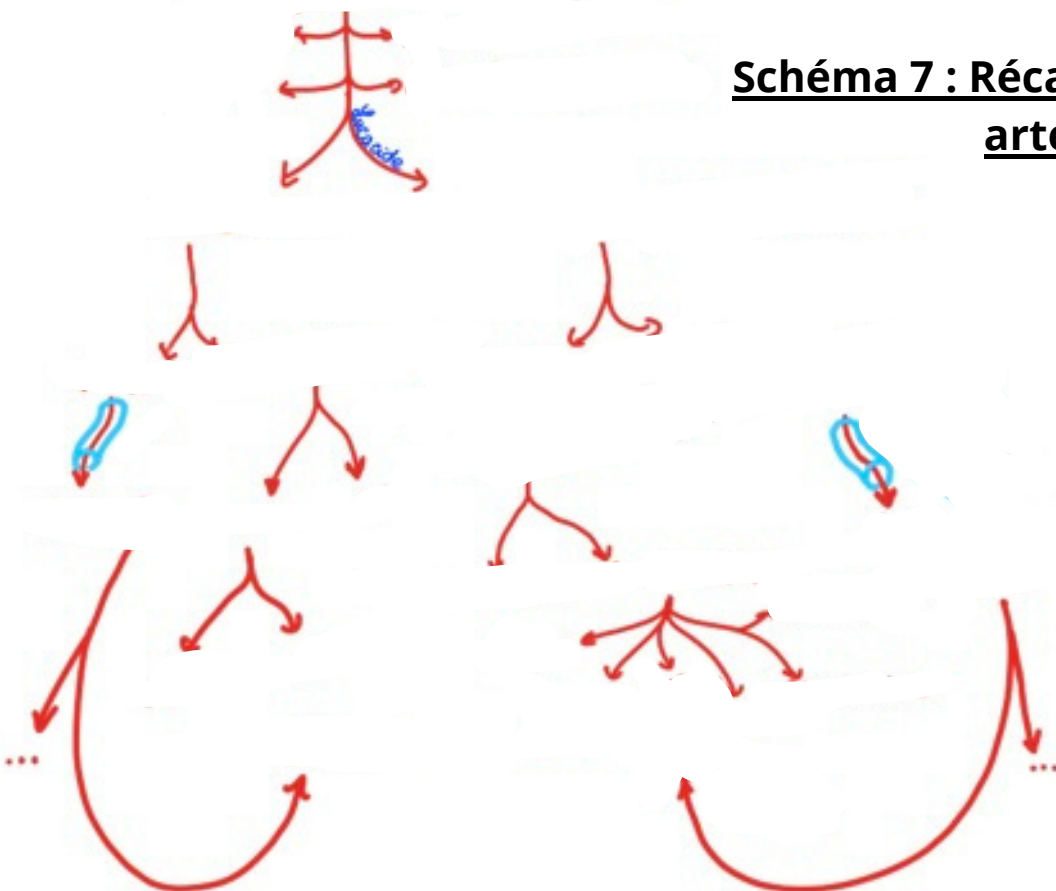


Schéma 6 : Vascularisation du Petit Bassin avec courants lymphatiques

Schéma 7 : Récap vascularisation artérielle



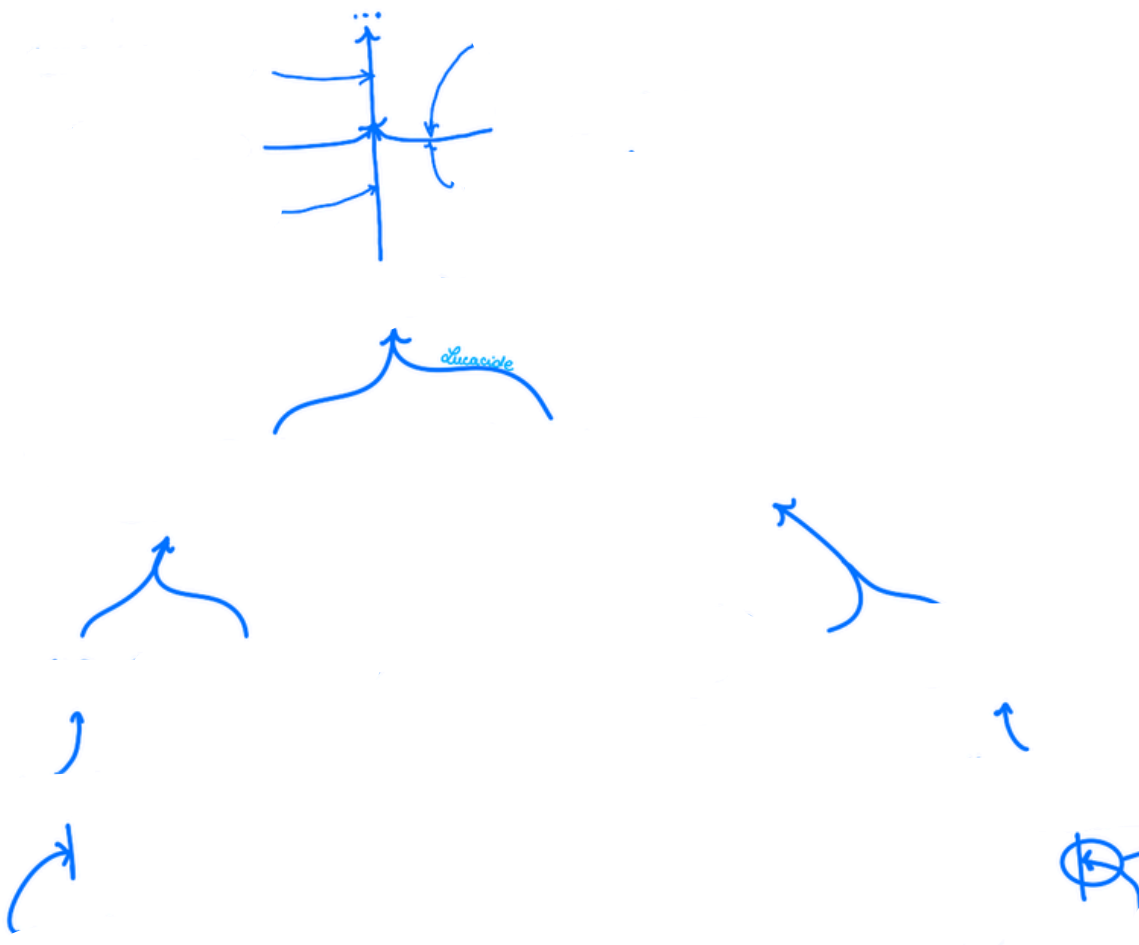


Schéma 8 : Récap vascularisation veineuse

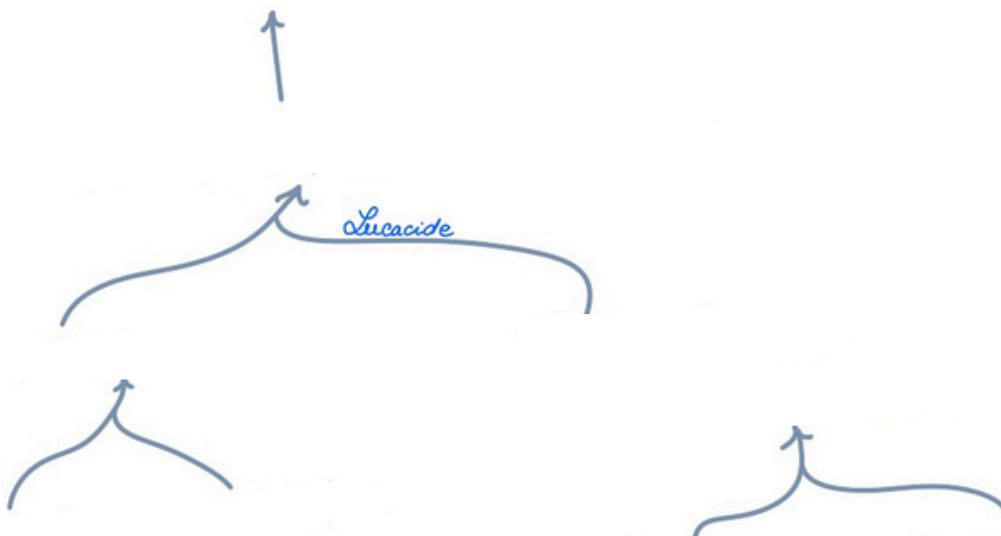


Schéma 9 : Récap courants de drainage lymphatiques

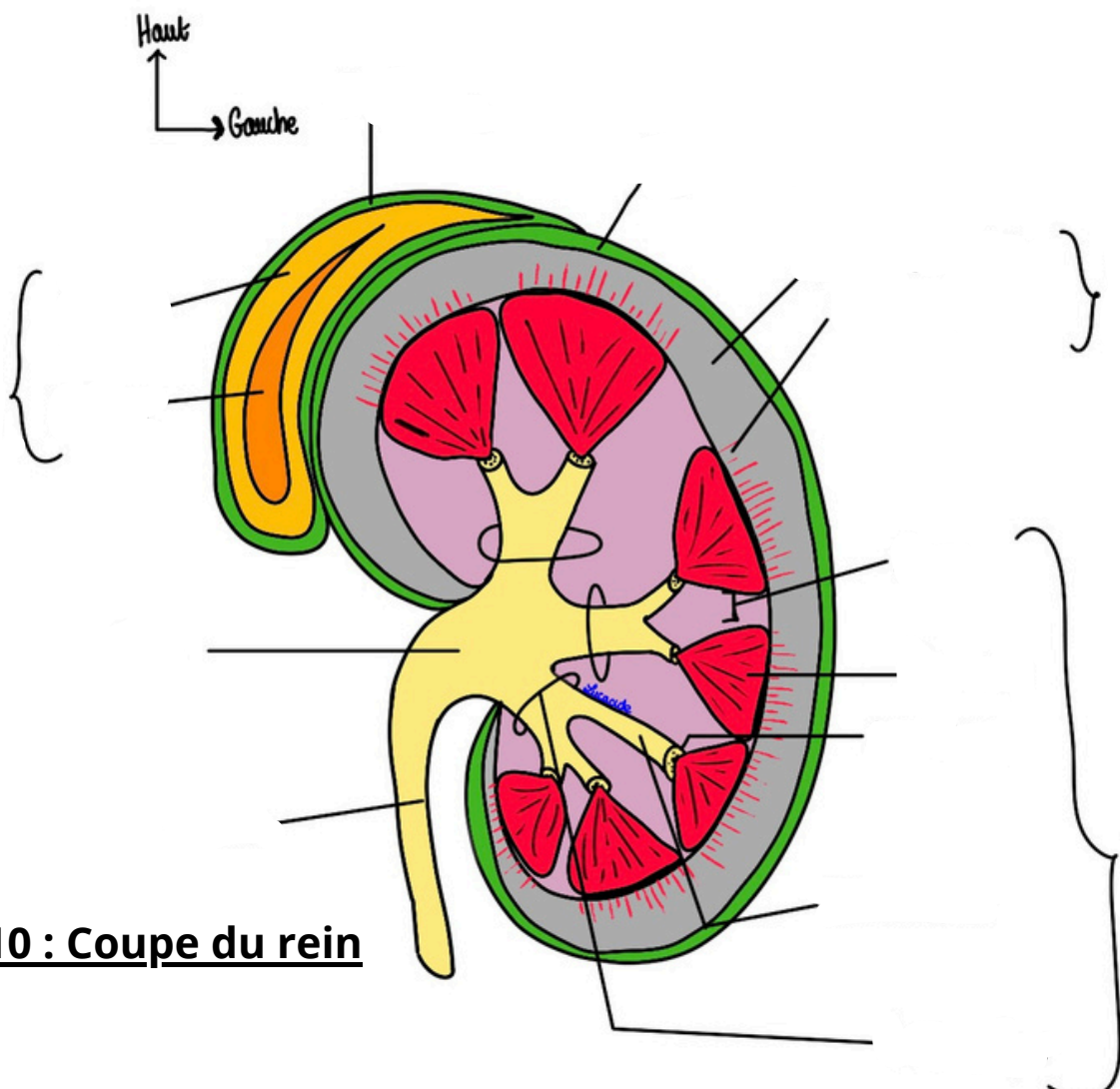


Schéma 10 : Coupe du rein

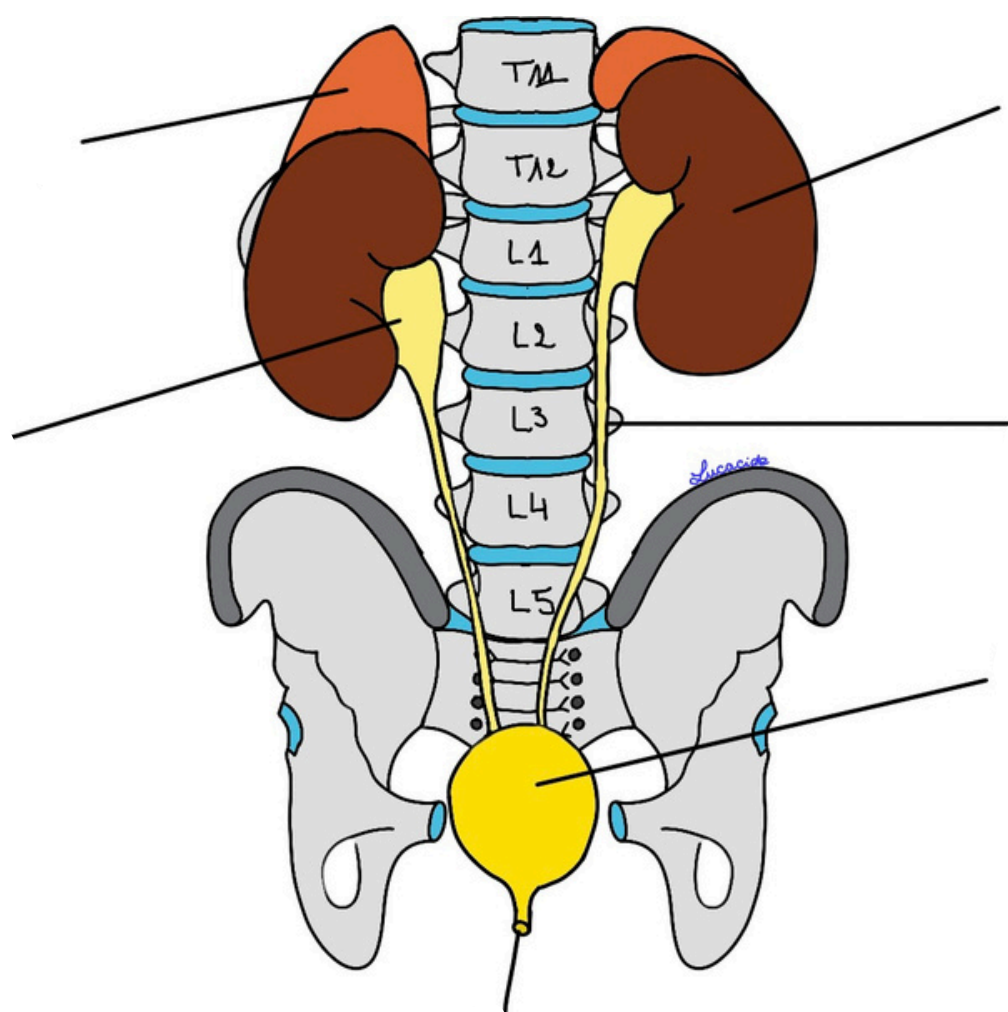


Schéma 11 : Les voies urinaires

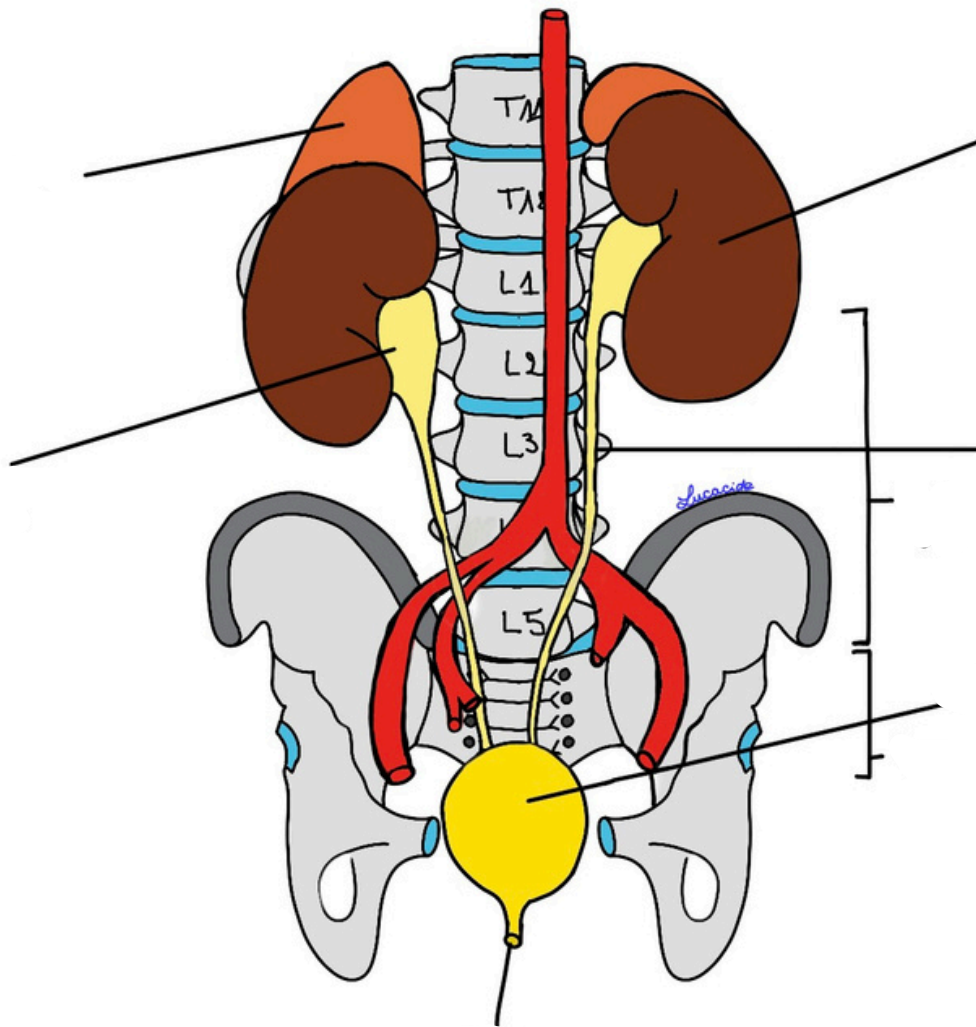
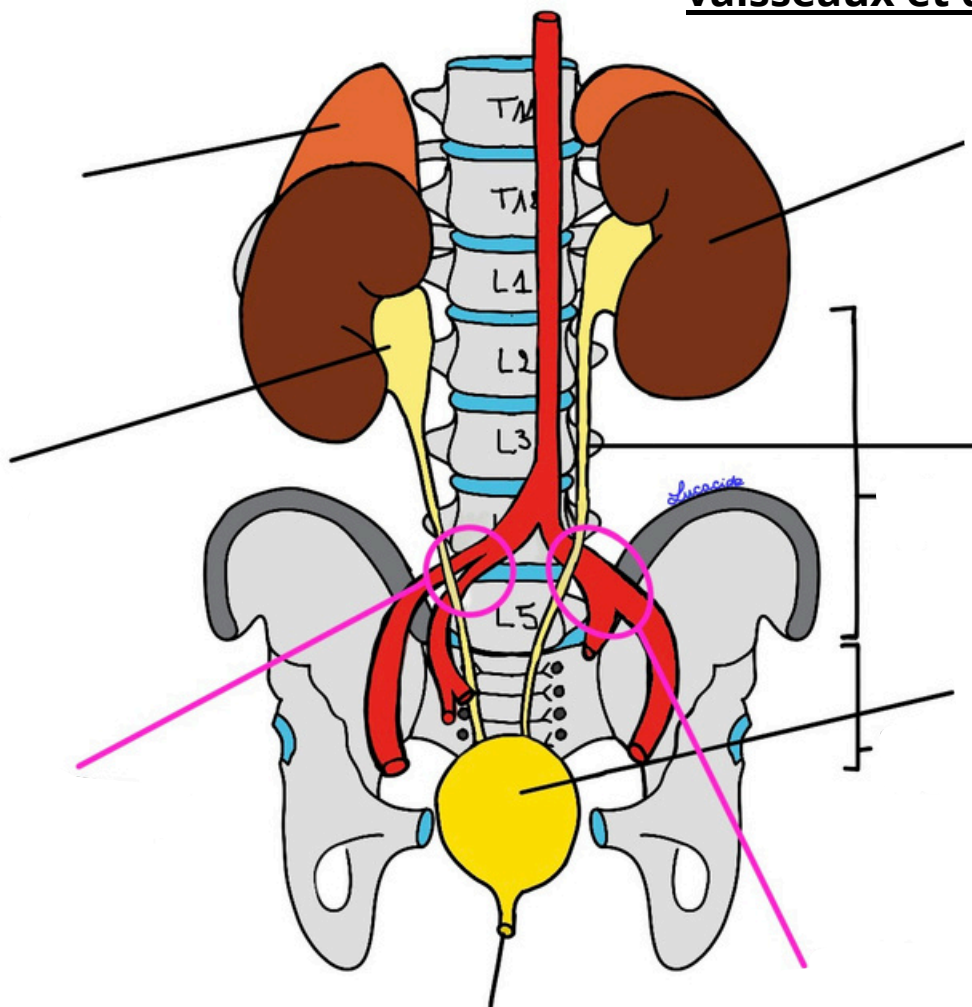


Schéma 12 et 13 : Croisement des vaisseaux et des uretères



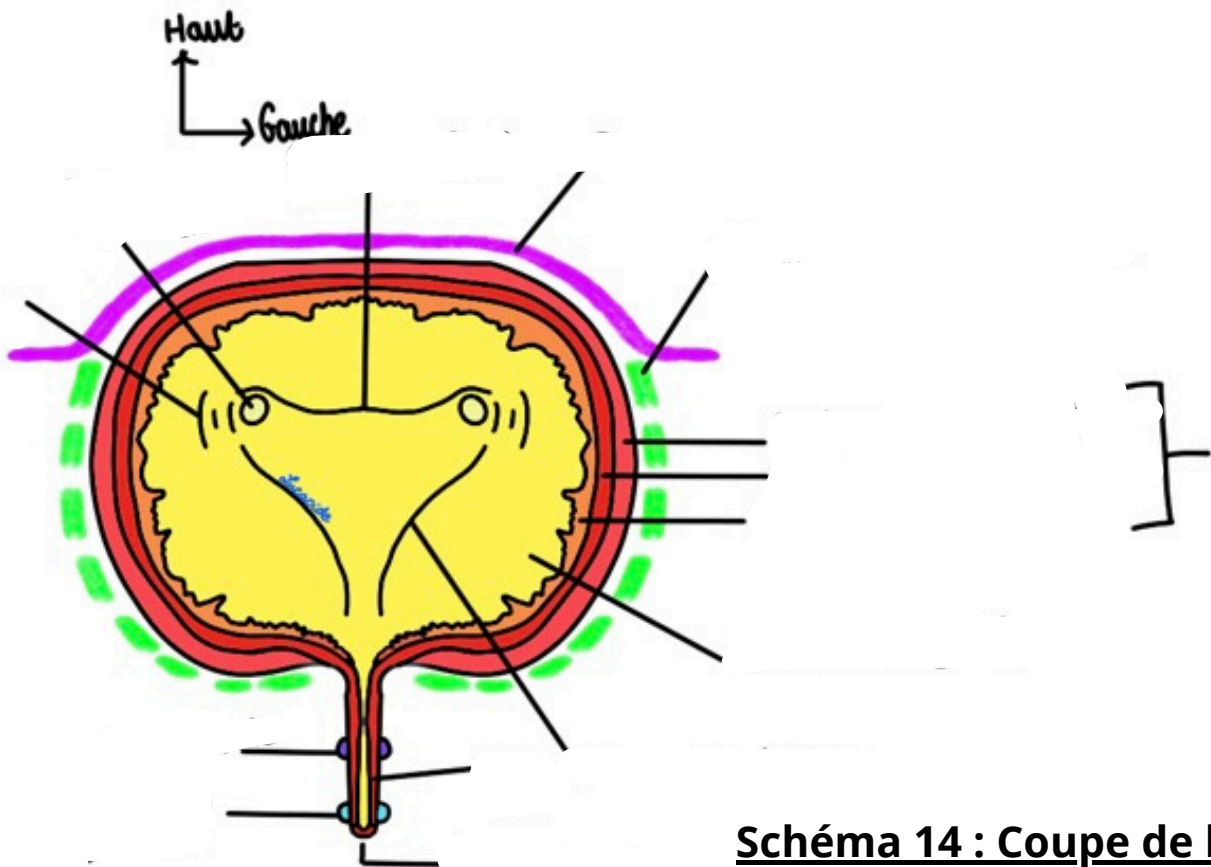


Schéma 14 : Coupe de la vessie

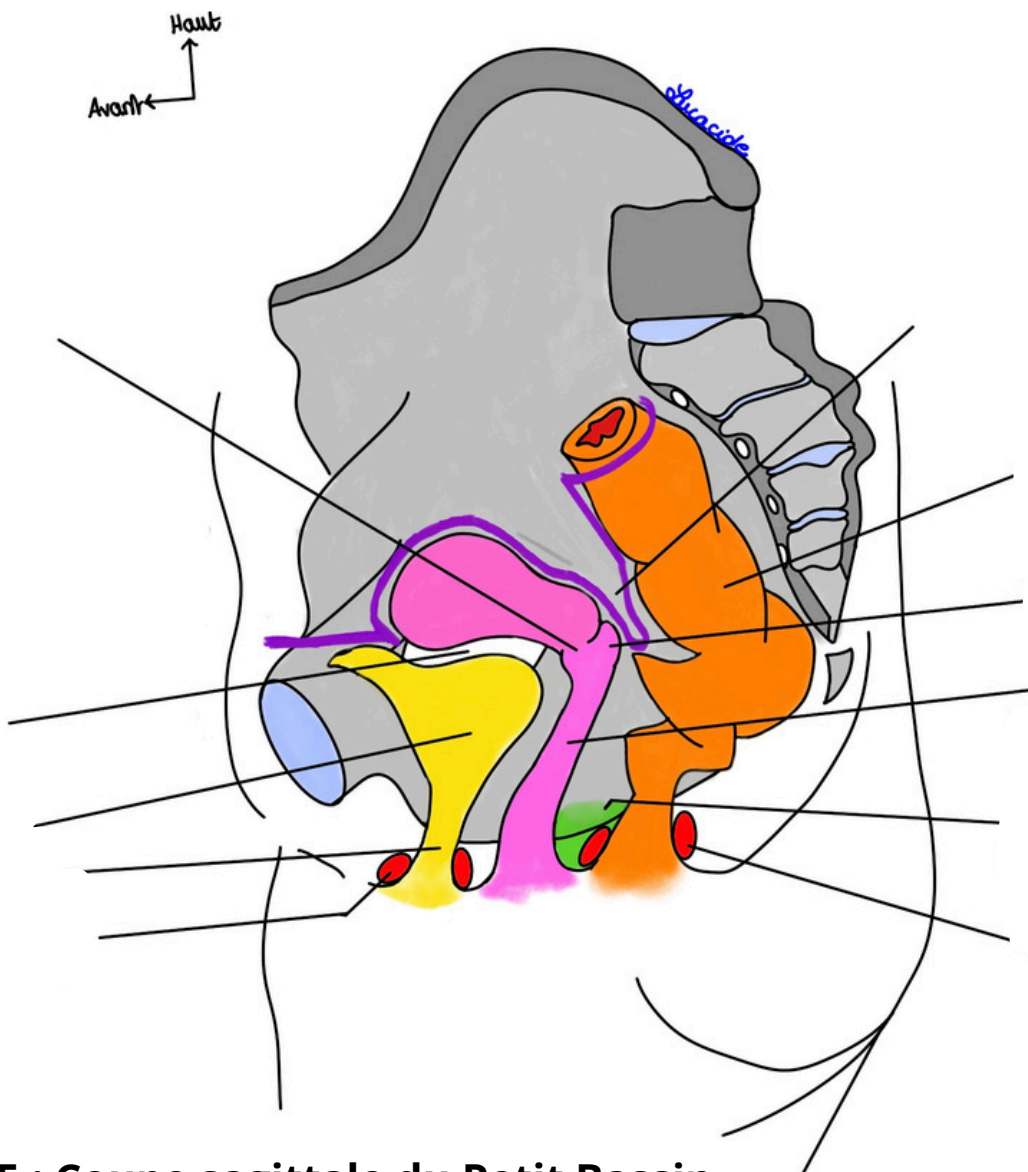


Schéma 15 : Coupe sagittale du Petit Bassin de la femme

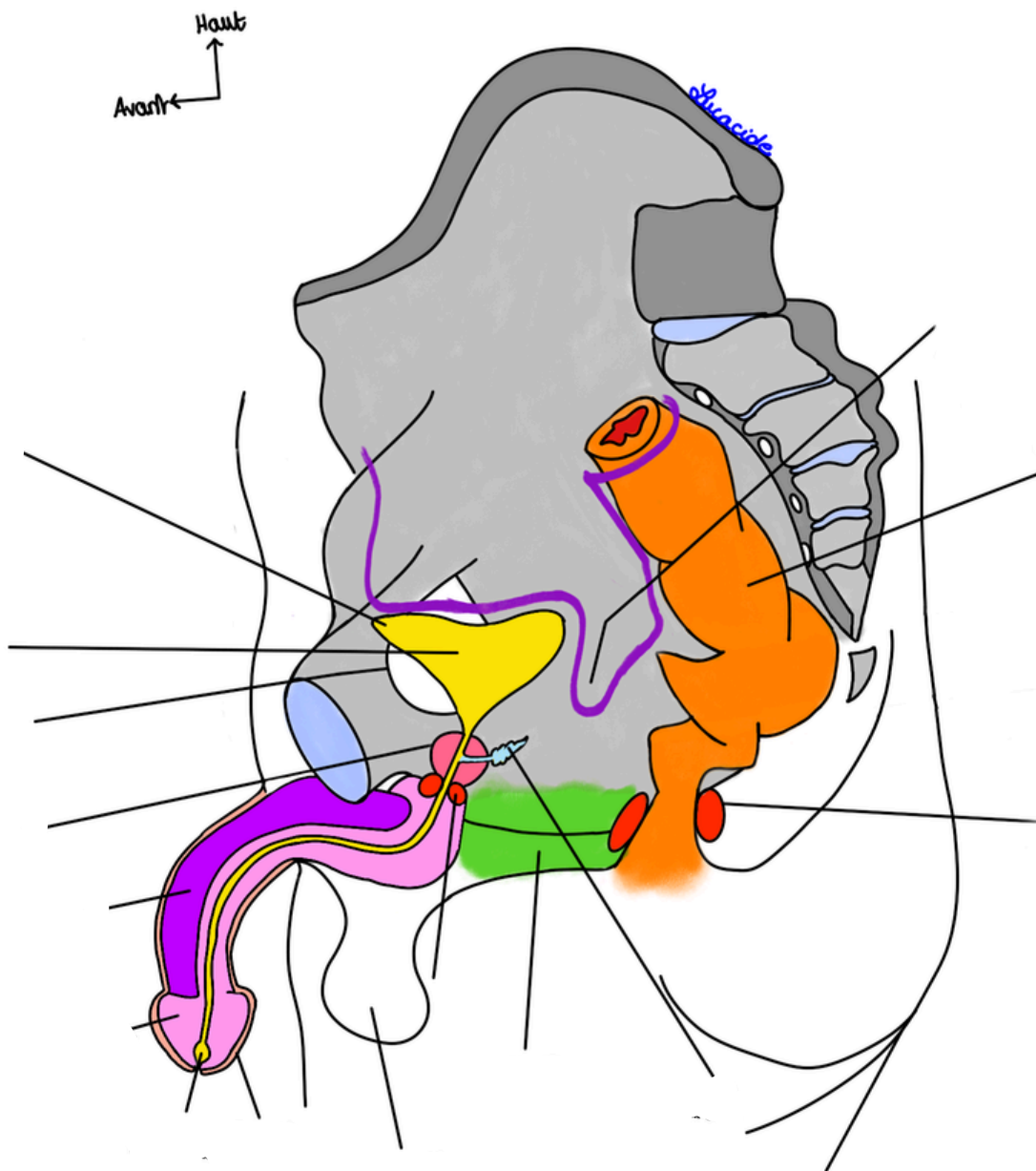


Schéma 16 : Coupe sagittale du Petit Bassin de l'homme

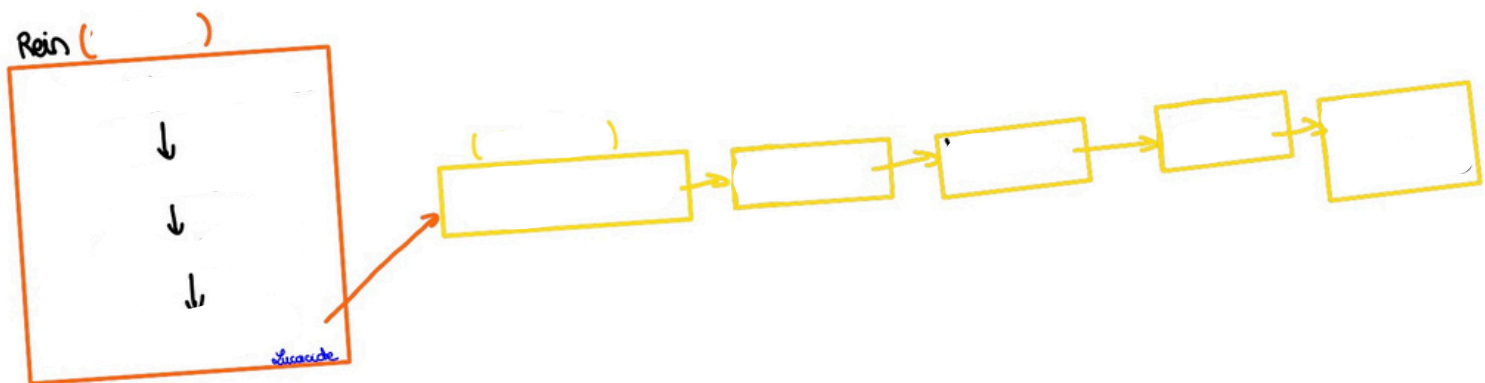


Schéma 17 : Récap des voies urinaires