

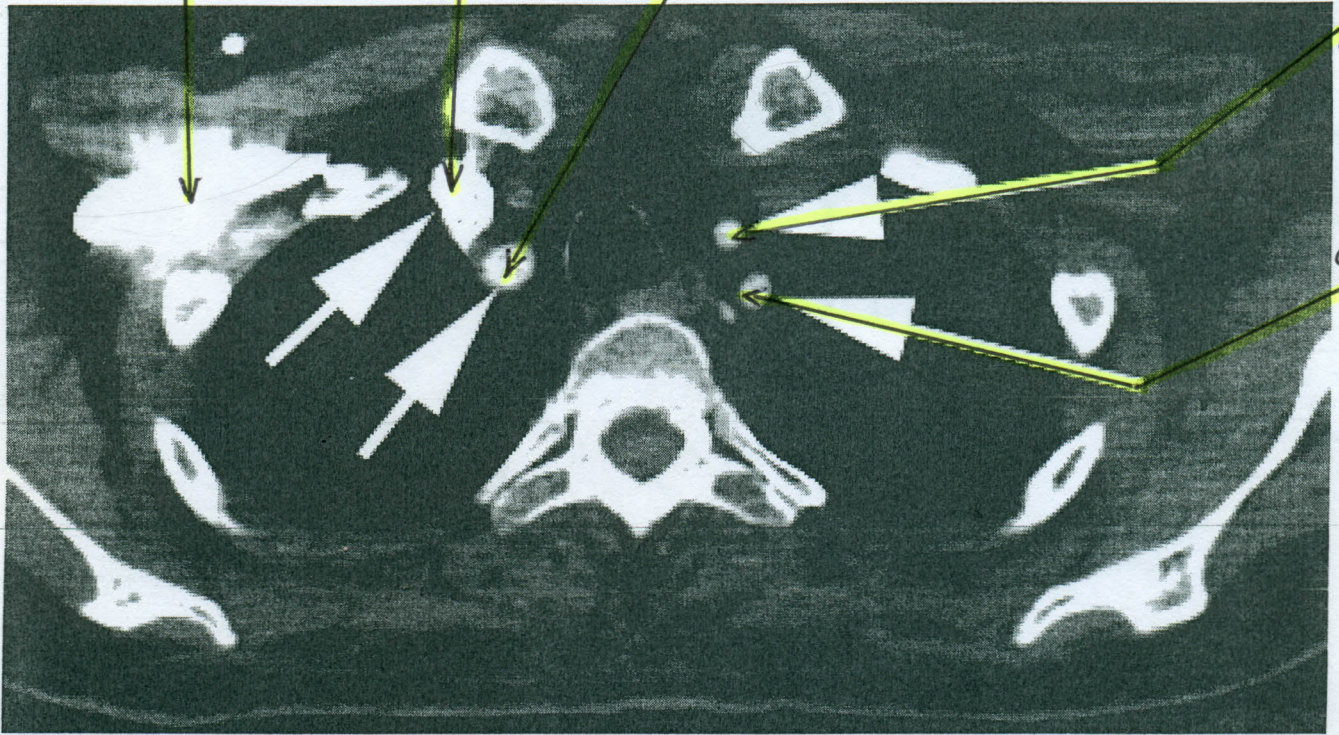
Veine sous  
clavière

Tronc veineux  
Brachio céphalique

Artère carotide  
commune droite

A. carotide  
com. G

A. sous  
clavière  
G

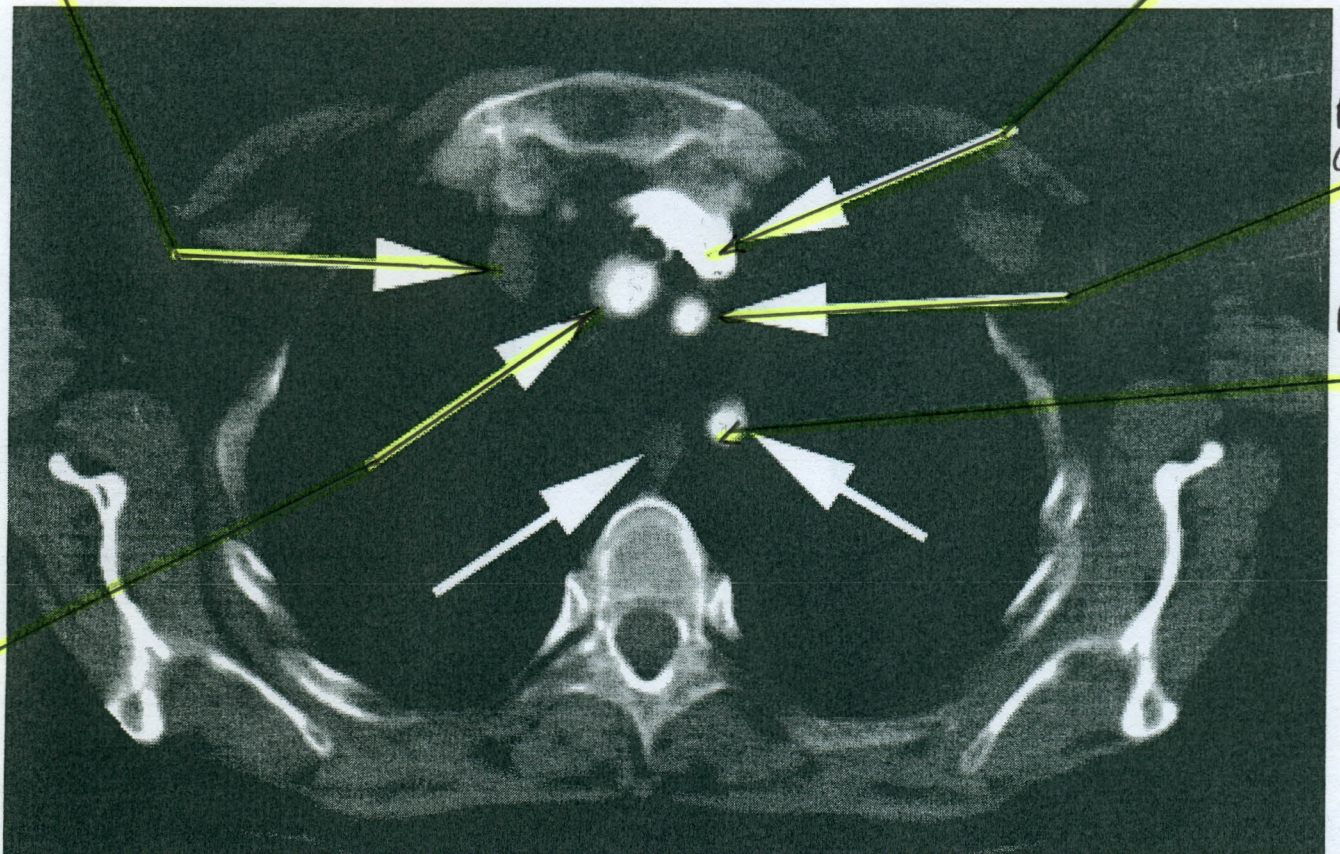


Tronc veineux brachio céphalique D

Tronc veineux brachio céphalique G

A. carotide  
com. G

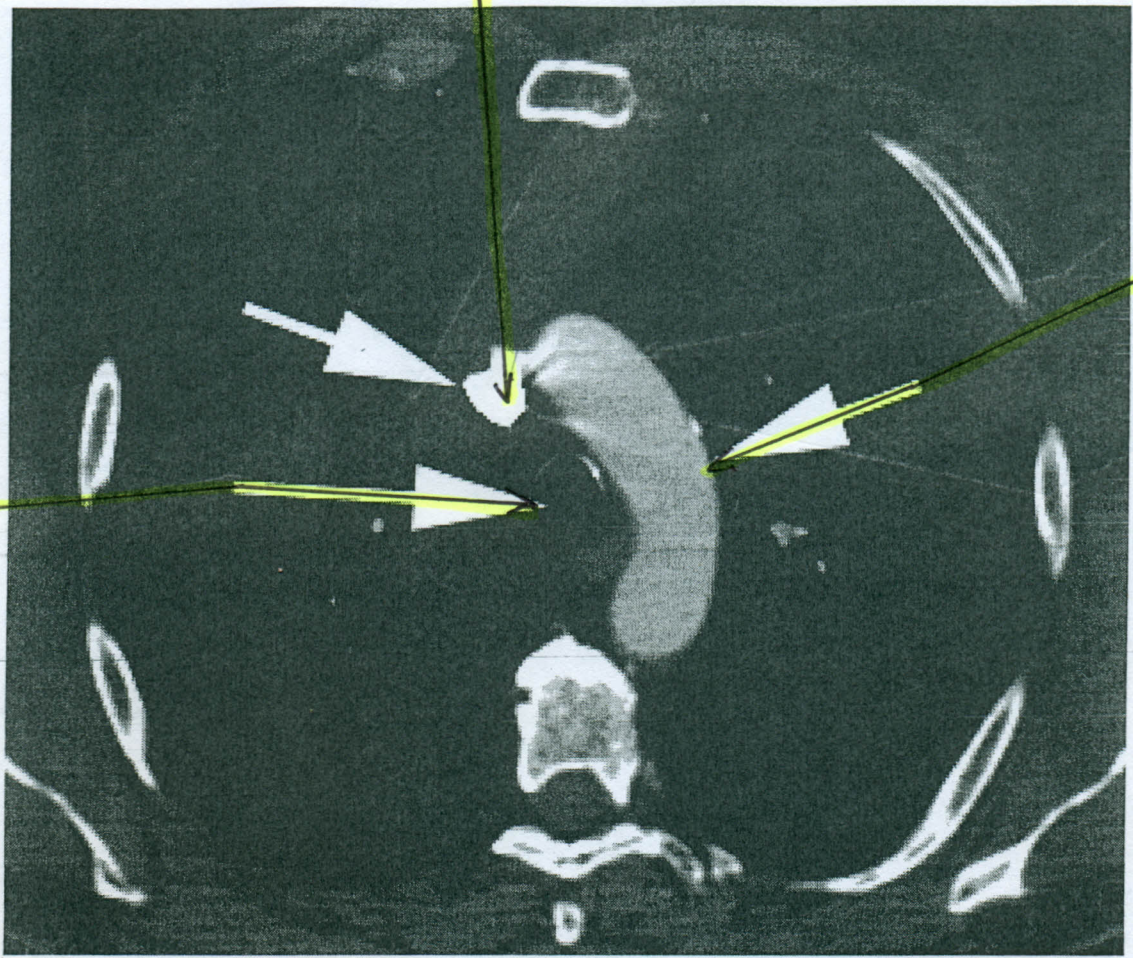
A. S-clavière  
G



TABC

V. Cave Sup

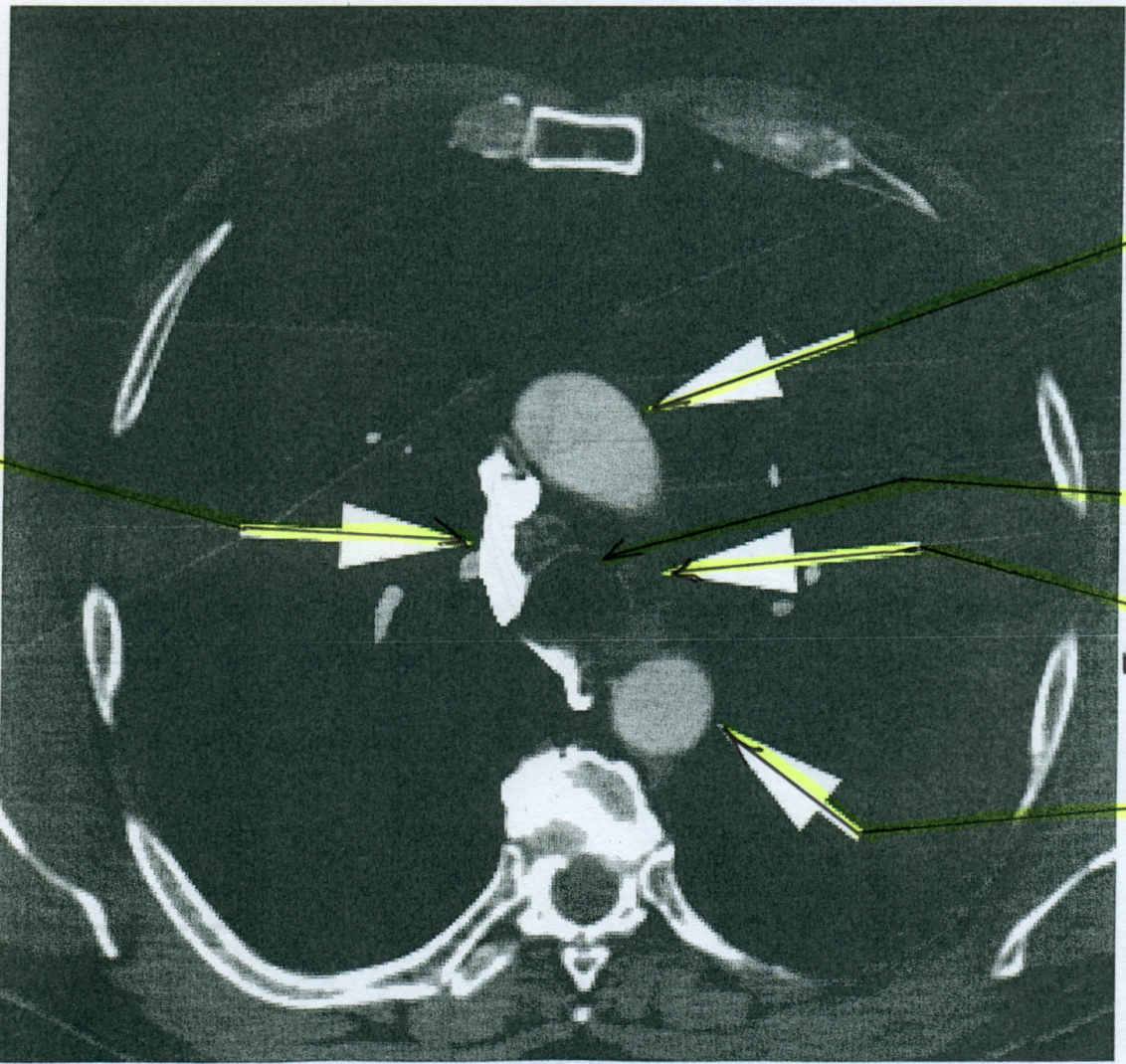
V. Cave Sup



Crosse Aortique

Aortique

Trachée



Aorte Ascendante

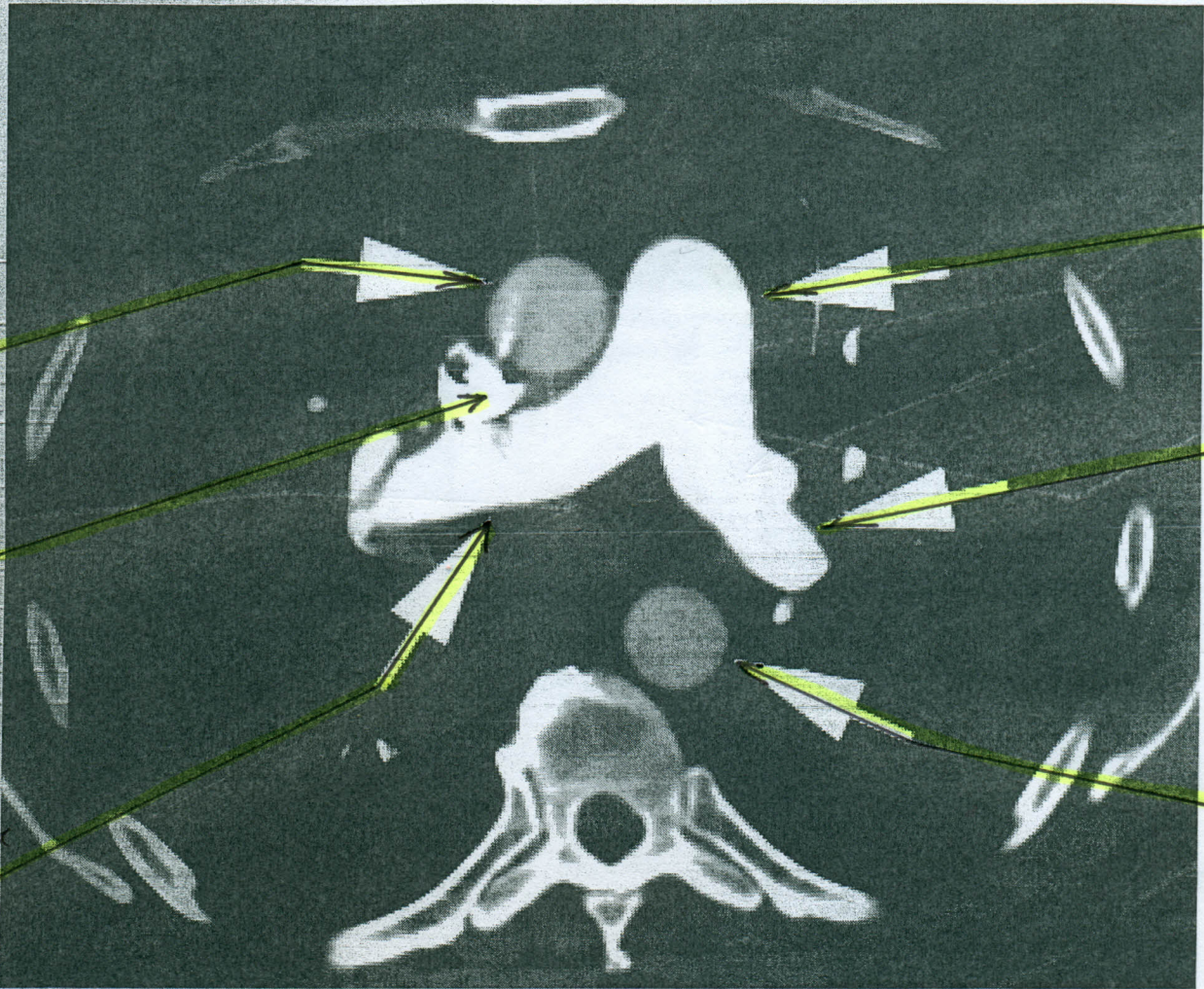
Trachée

Fenêtre Aorto-pulmonaire

Aorte Descendante

Crosse Azygos

Crosse Azygos



Aorte  
Ascendante

Veine Cave  
Sup

A. Pulmonaire  
D

Artère  
Pulmonaire

Artère  
Pulmonaire  
G

A. Desc

Oreillette  
D

Oreillette  
G

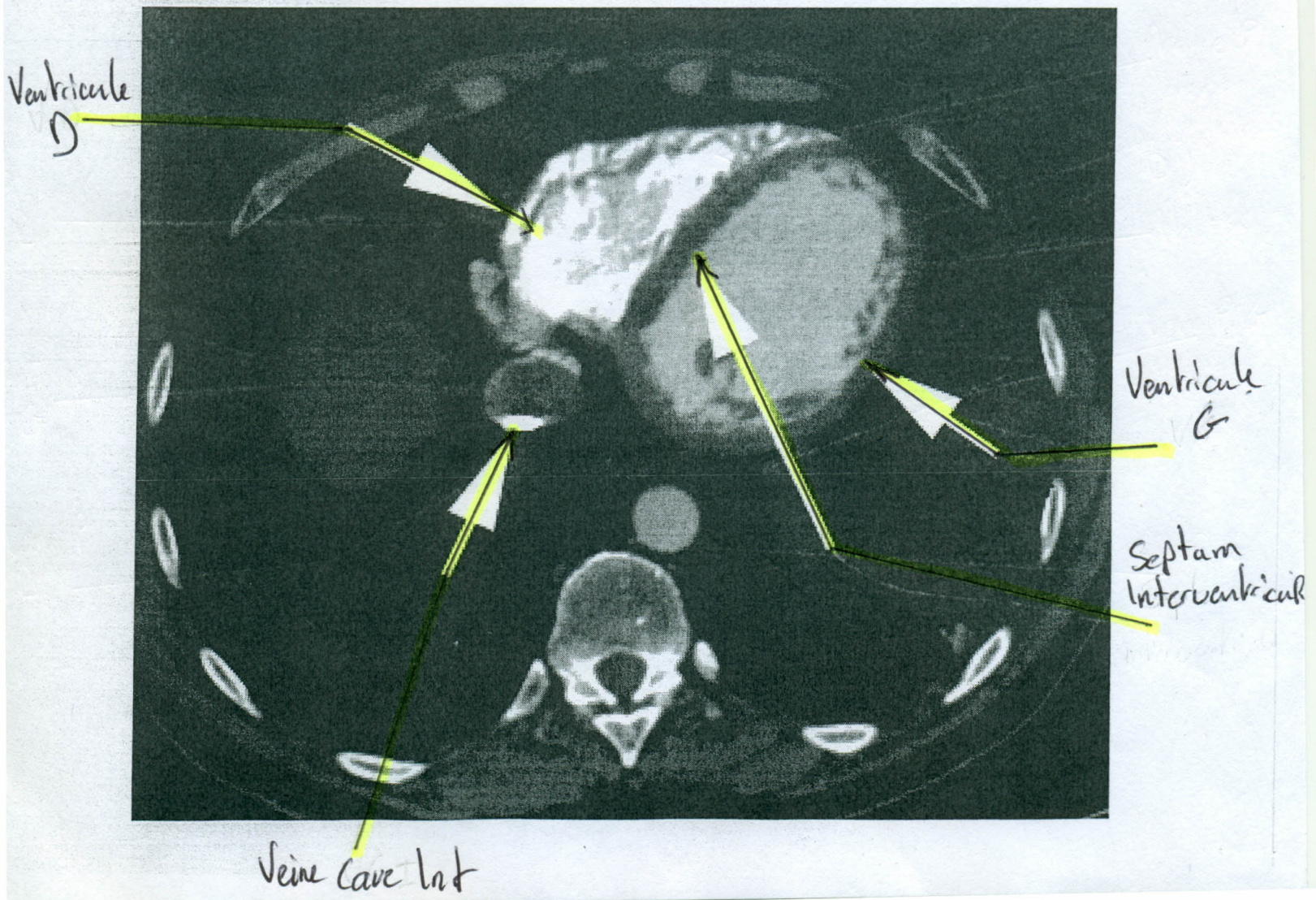
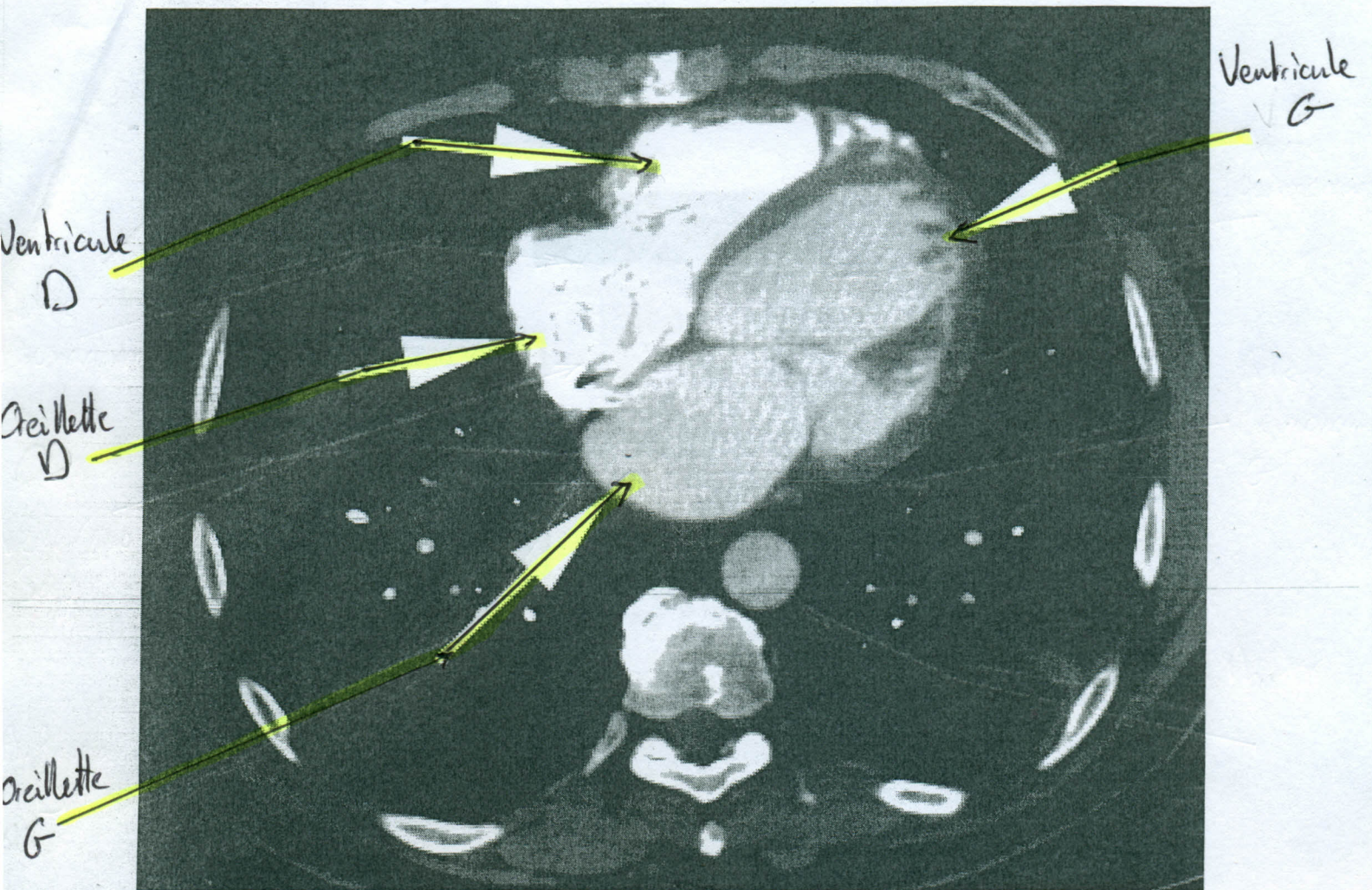
Veine P  
D

Artère P  
(jonction  
ac Ventricule  
D)

Ao. Asc

Veine P. G

Ao. Desc

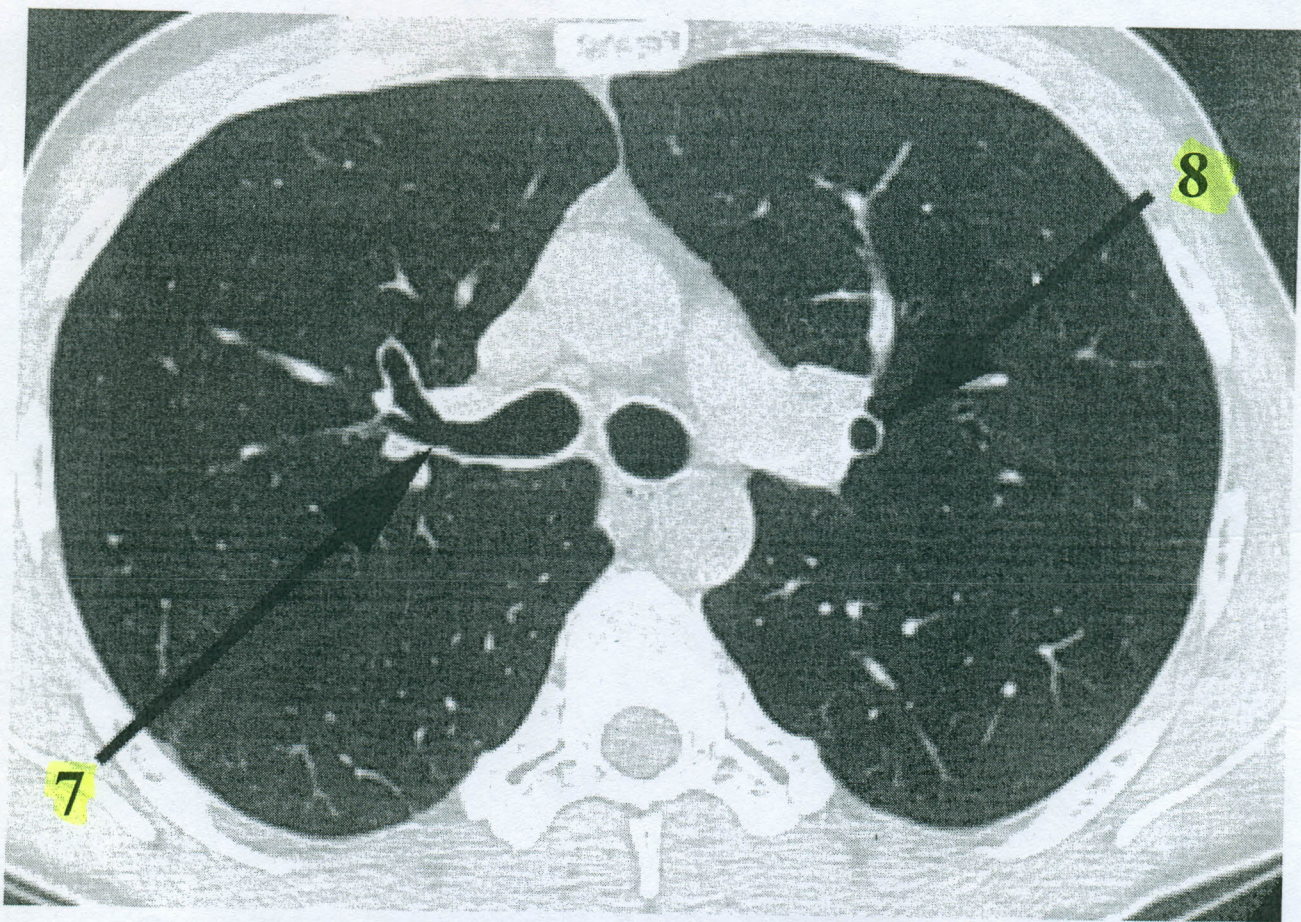
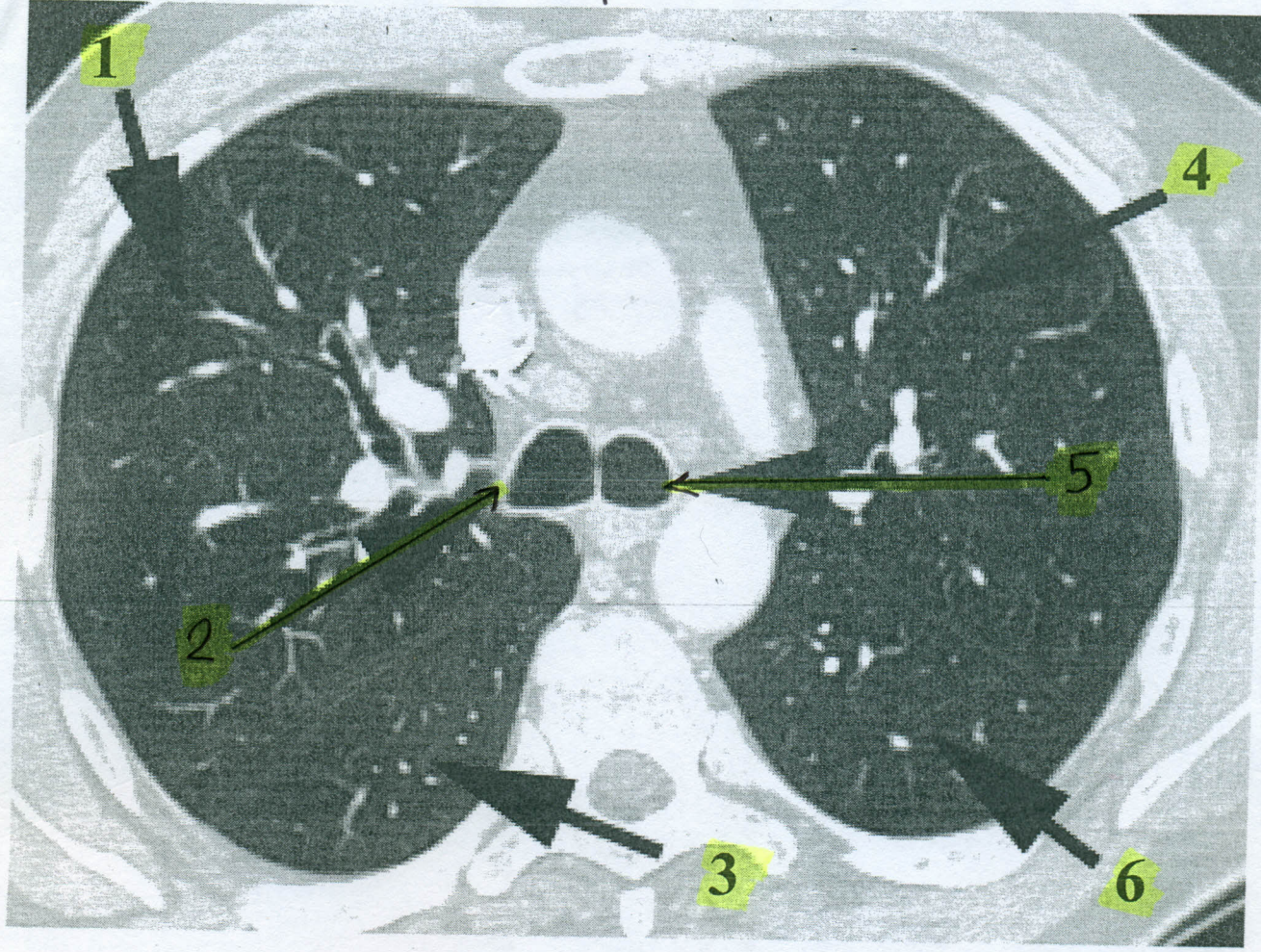


1: Lobe sup D  
2: Bronche ppl D

3: Lobe inf D  
4: Lobe sup G

5: Bronche ppl G  
6: Lobe inf G

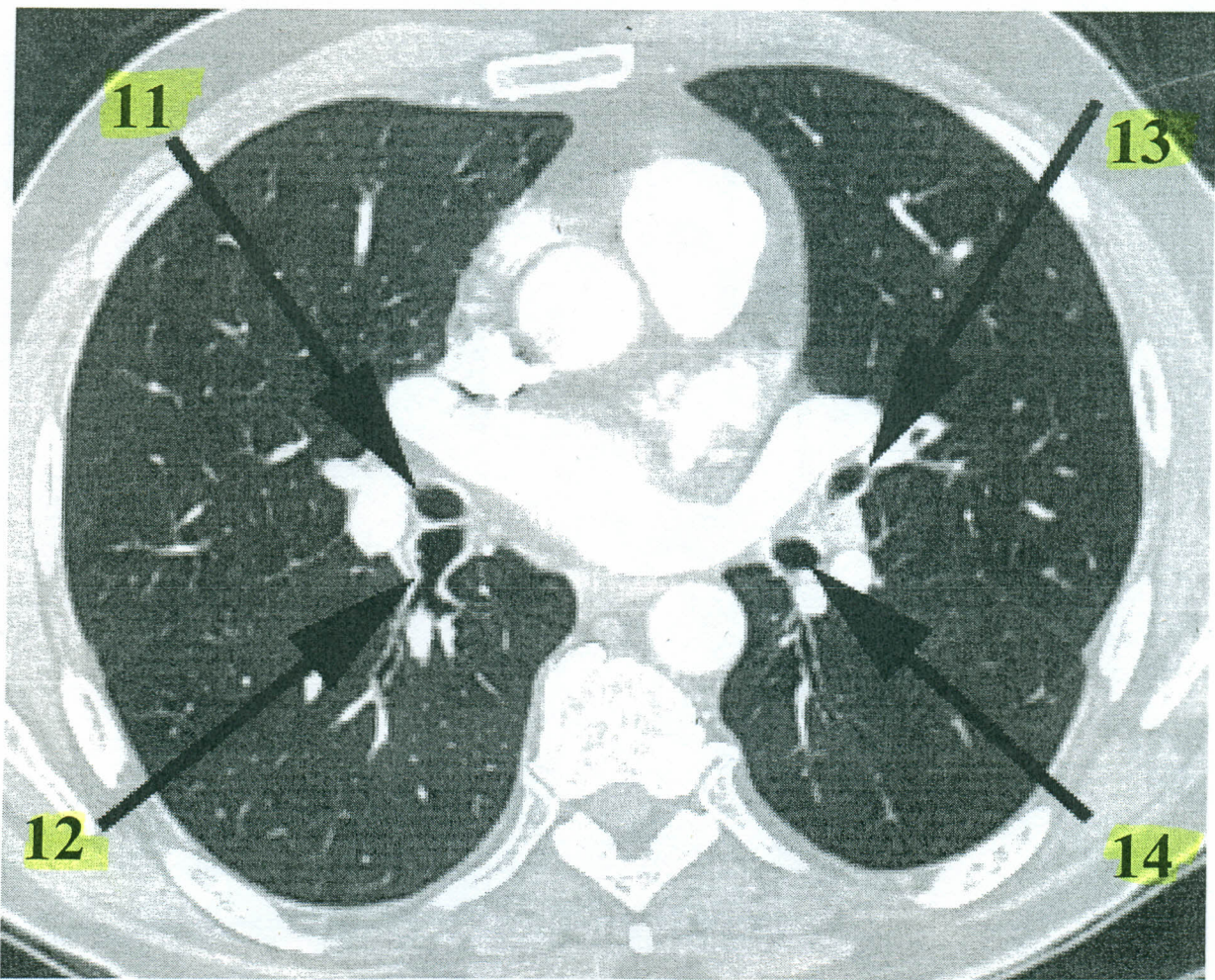
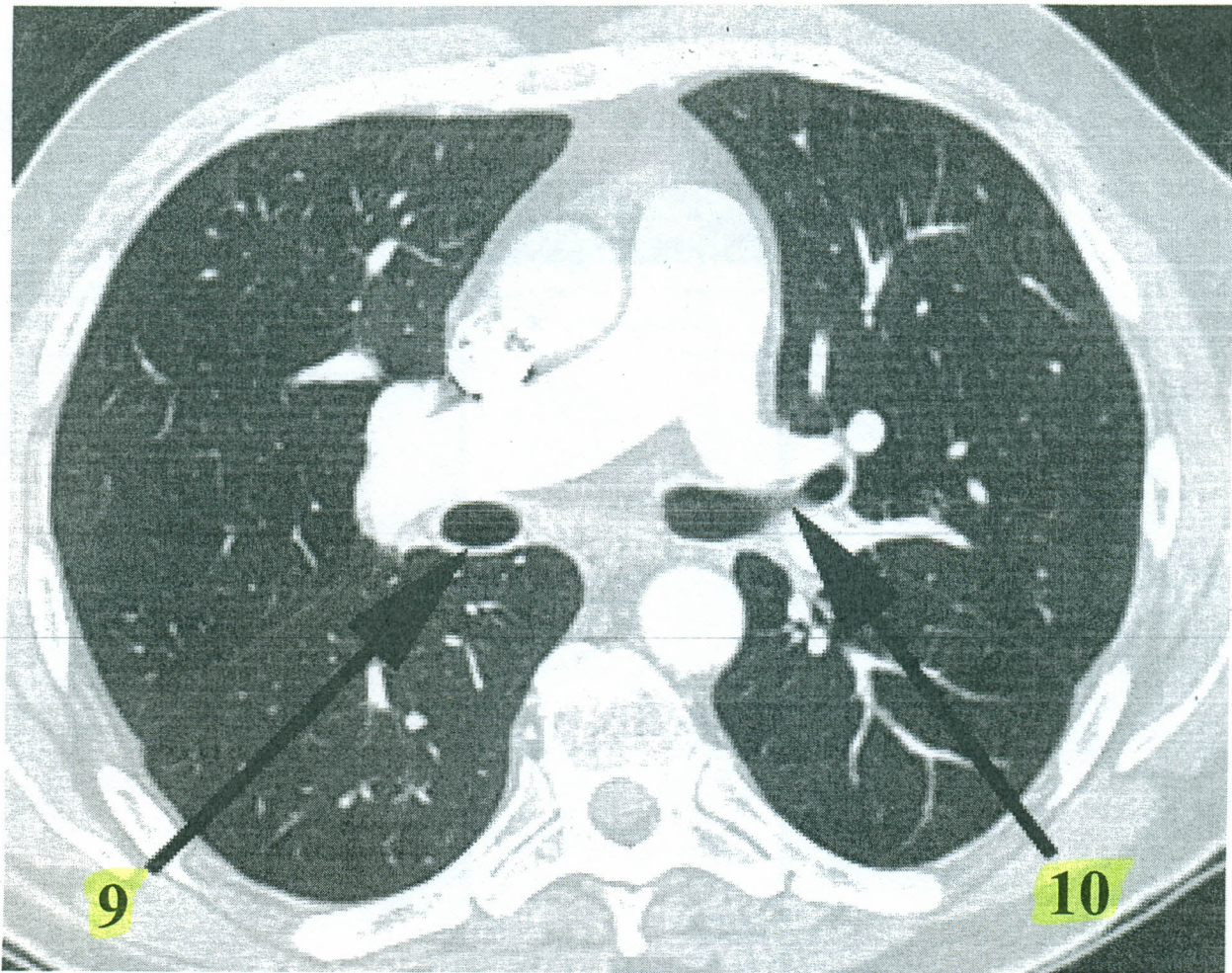
7: Bronche Lobaire Sup D  
8: Bronche Lobaire Sup G



9: Bronche intermediaire 11: Bronche lobaire Rayenne

13: Bronche Lingulaire  
14: Bronche lobaire Inf G

10: Bronche lobaire sup G 12: Bronche lobaire Inf D



BL

15: Bronche lobaire Moyenne 16: Bronche lobaire lat D

